

Docket #4

CD-CPC-2024-00033

Development Plan (Major Amendment)

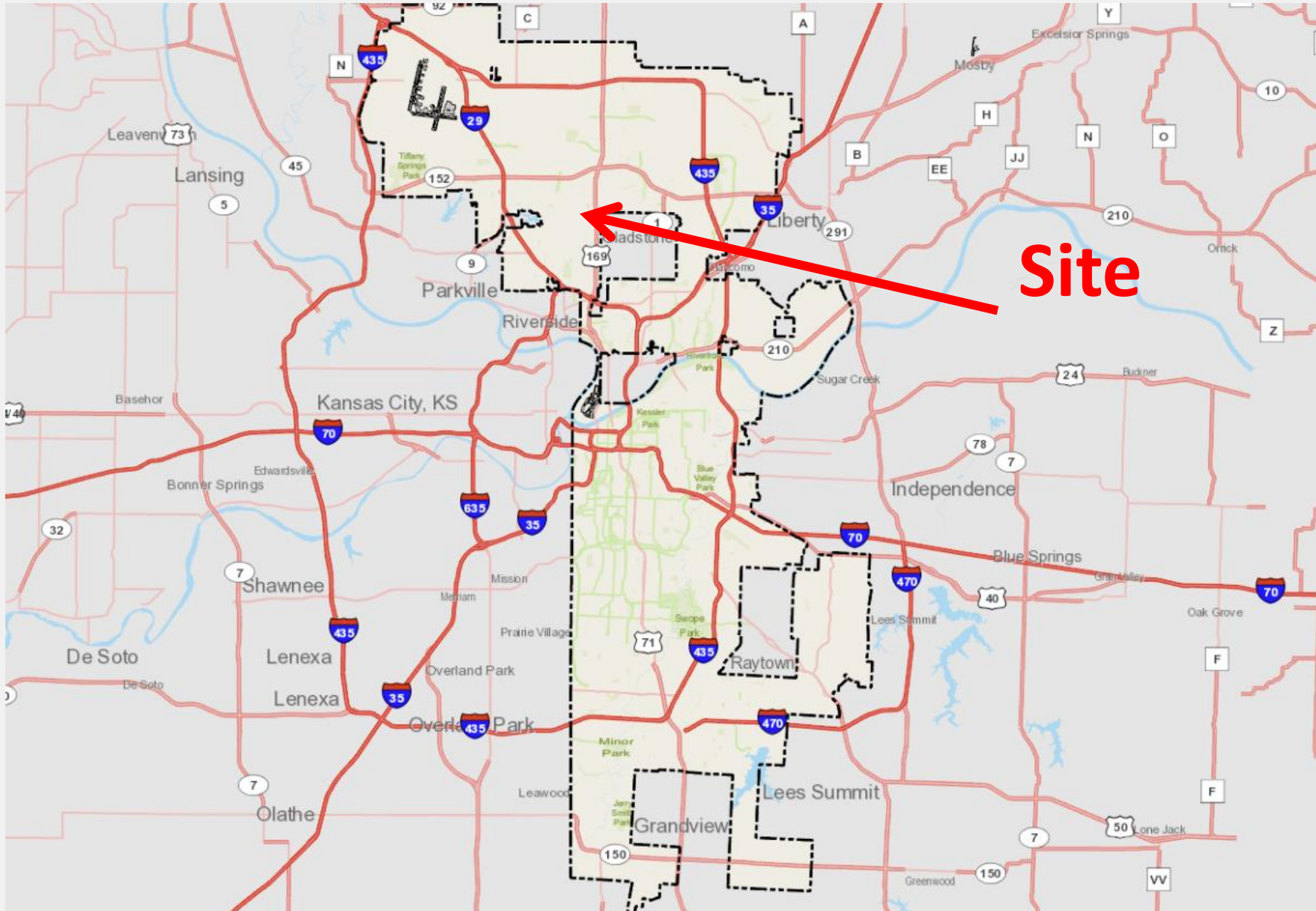
Kinsley Multi-Family Phase II – 1101 NW Englewood Rd

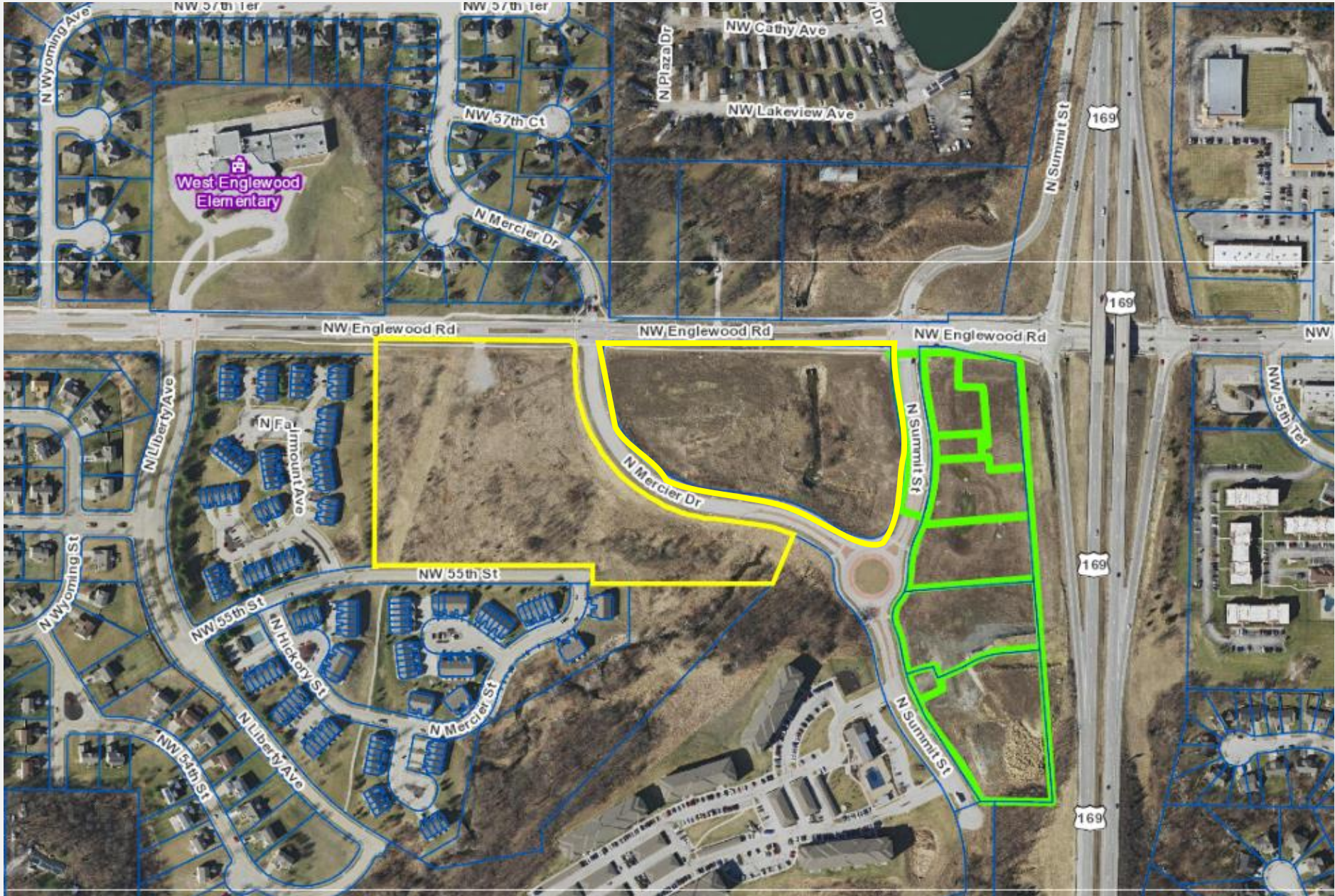
June 6, 2024

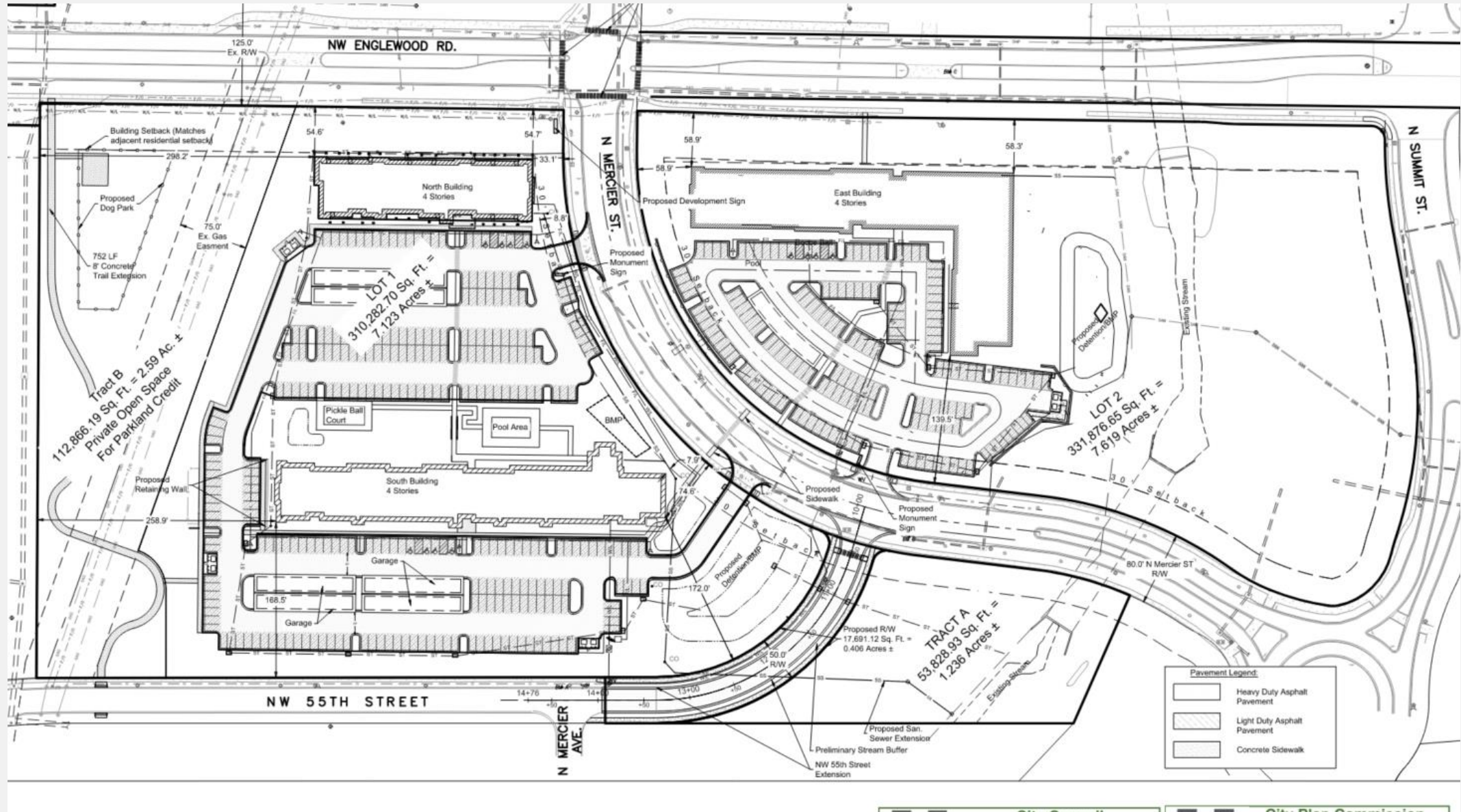
Prepared for

City Plan Commission

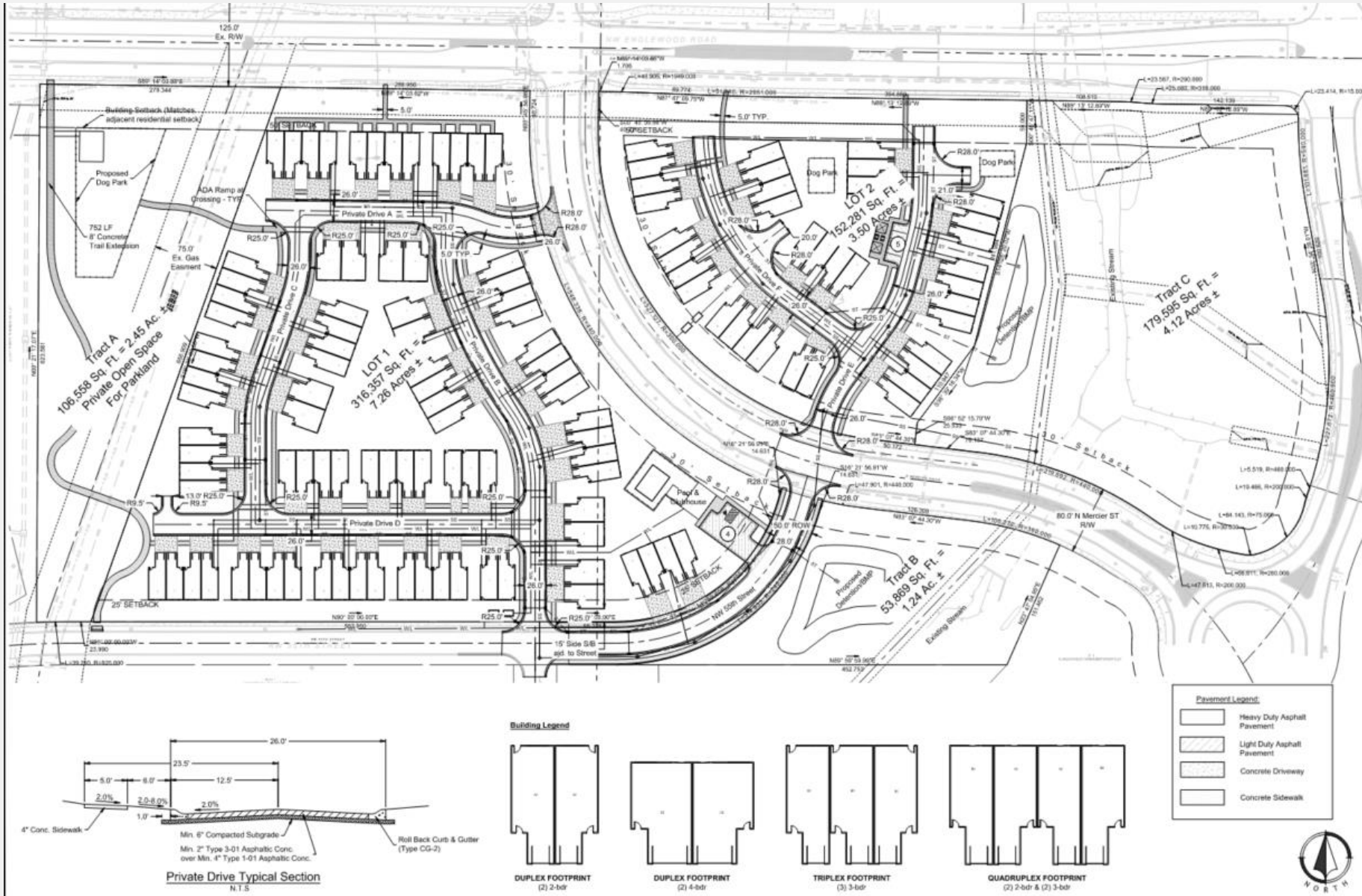








Controlling Plan CD-CPC-2022-00044



Site Plan



① B2 DUPLEX FRONT ELEVATION
1/4" = 1'-0"

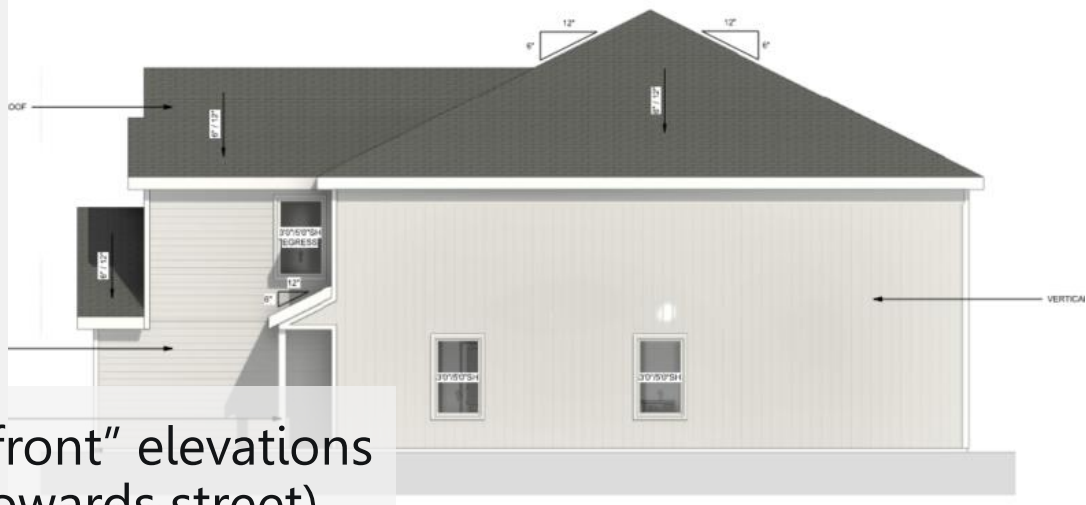


③ B2 TRIPLEX FRONT ELEVATION
1/4" = 1'-0"



② B2 QUADPLEX FRONT ELEVATION
1/4" = 1'-0"

"front" elevations
(facing towards street)



Side & "front" elevations (facing towards street)



① DUPLEX REAR ELEVATION
1/4" = 1'-0"



② TRIPLEX REAR ELEVATION
1/4" = 1'-0"



③ QUADPLEX REAR ELEVATION
1/4" = 1'-0"

rear elevations



Boulevard-facing elevation



View south towards subject site from Mercier & Englewood (Oct 2023)



View north towards site (right and left) from Mercier (Oct 2023)

Staff Recommendation

Case No. CD-CPC-2024-00033

Approval with Conditions