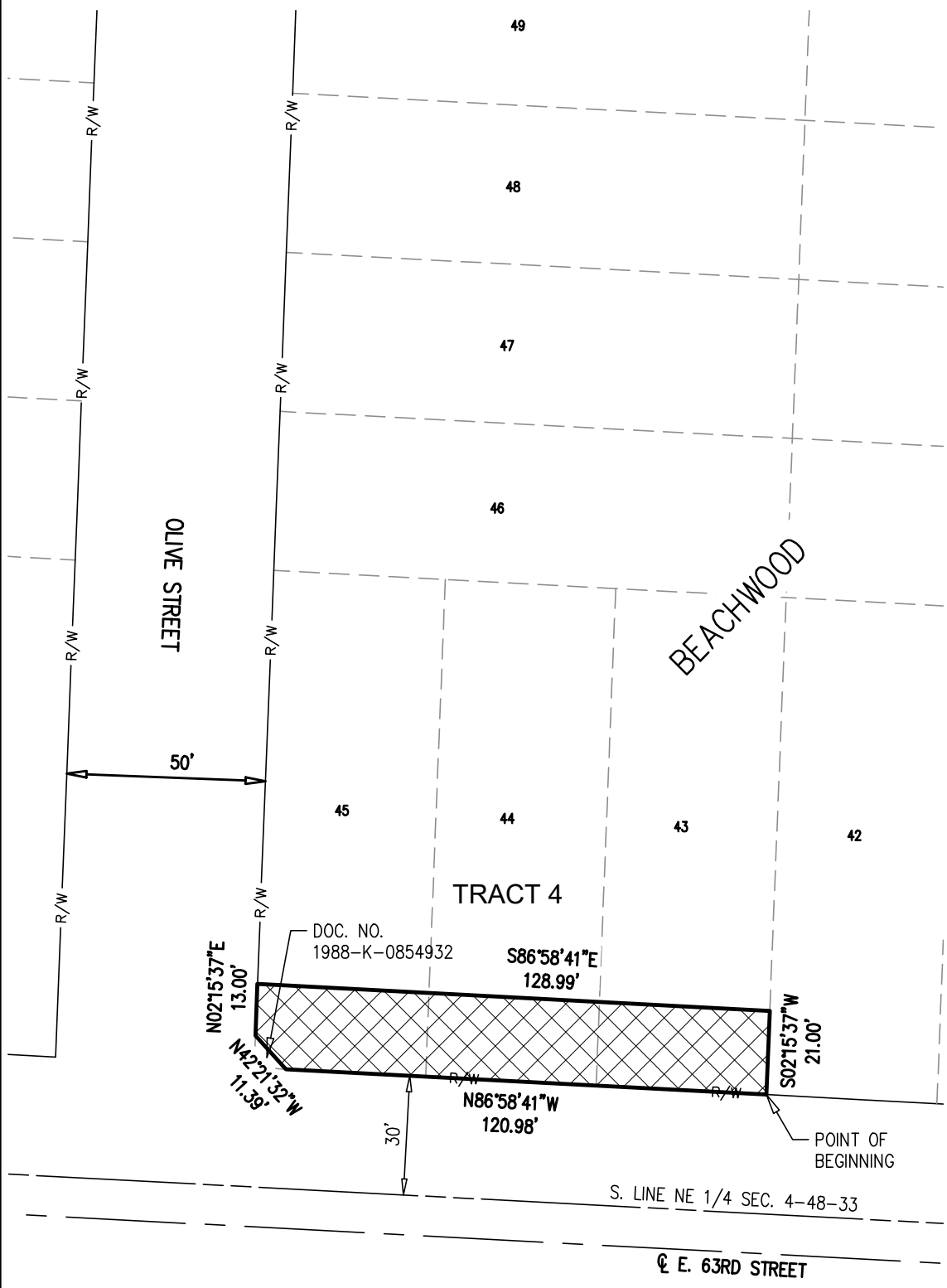
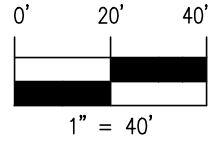
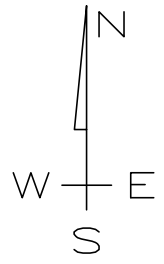


EXHIBIT B



DOC. NO.
1988-K-0854932

S86°58'41"E
128.99'

POINT OF
BEGINNING

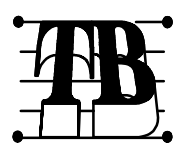
S. LINE NE 1/4 SEC. 4-48-33

E. 63RD STREET



DECEMBER 02, 2021

PART OF LOTS 43 THROUGH 45, BEACHWOOD,
A SUBDIVISION IN
KANSAS CITY, JACKSON COUNTY, MISSOURI
RIGHT-OF-WAY



TALIAFERRO & BROWNE, INC.
CONSULTING ENGINEERS-SURVEYORS
1020 EAST 8TH ST., KANSAS CITY, MO, 64106
PH: (816) 283-3456 FAX: (816) 283-0841

DRAWN: REG
CHECKED: MTI-DLJ

DATE: 12/02/2021

F:\04\04-4071 - SOUTHPOINTE RIGHT-OF-WAY
04-4071V-RW01.DWG, ROW - Exhibit A and B (4), EXHIBIT B

2408 E. 63RD STREET