

Ordinance 230994

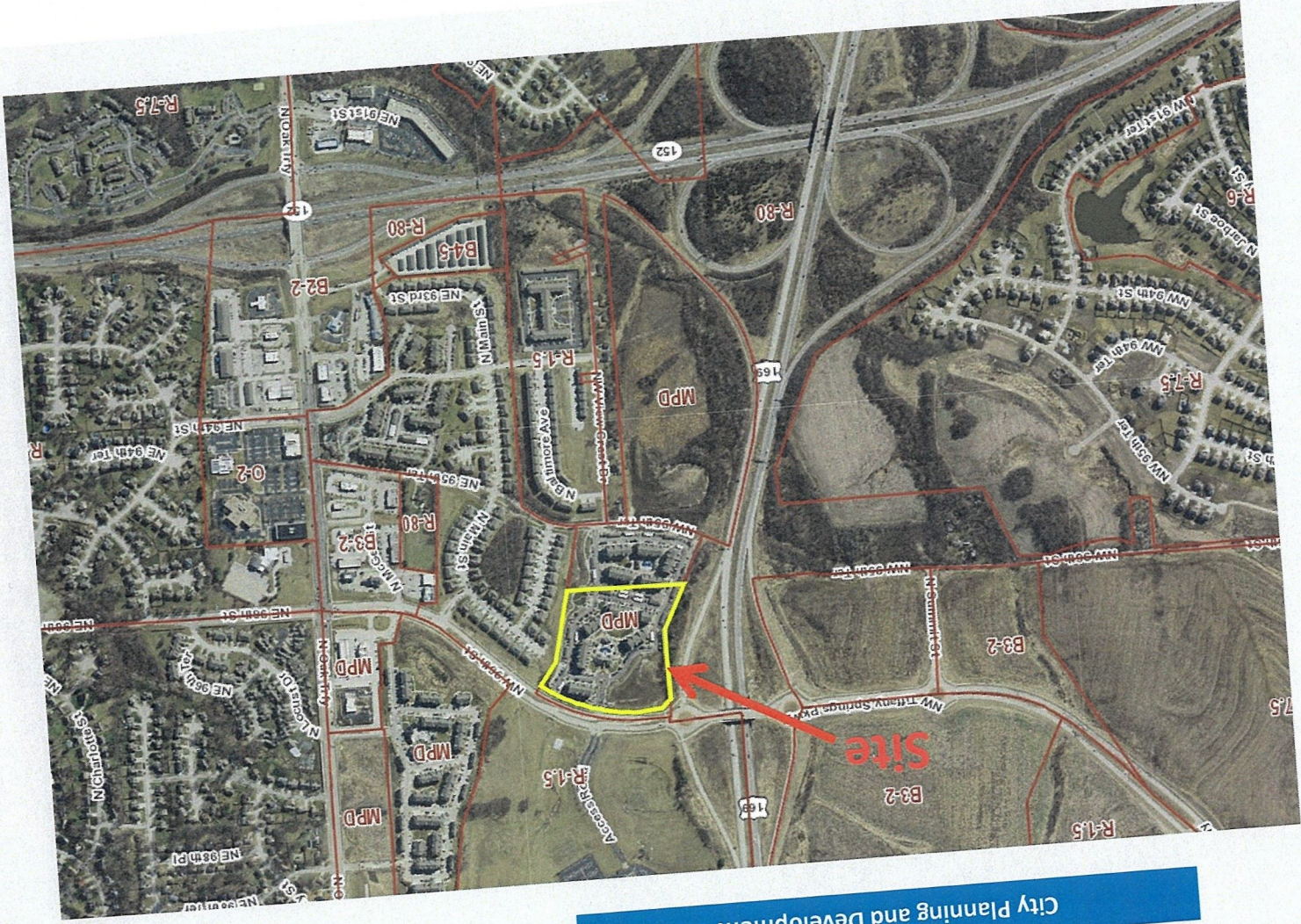
Major Amendment of MPD Plan

Southeast Corner of Northwest 96th Street and Highway 169

December 6, 2023

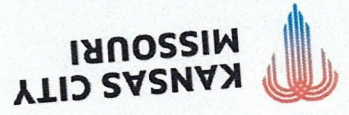
Neighborhood Planning & Development Committee





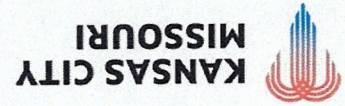
City Planning and Development

Location





Location



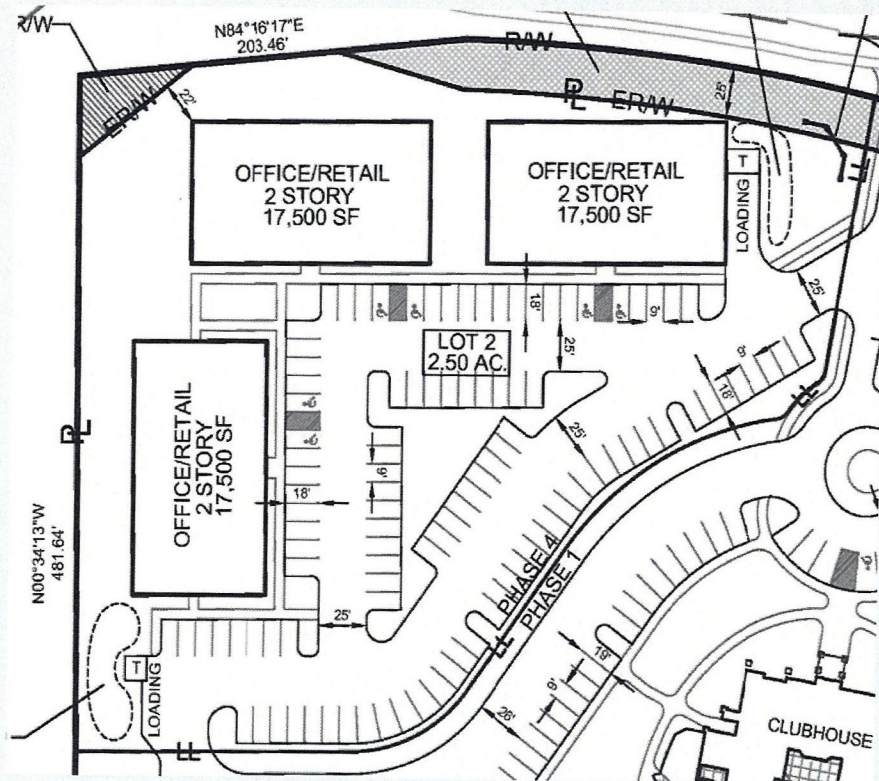
City Planning and Development

Looking South from Northeast 96th Street





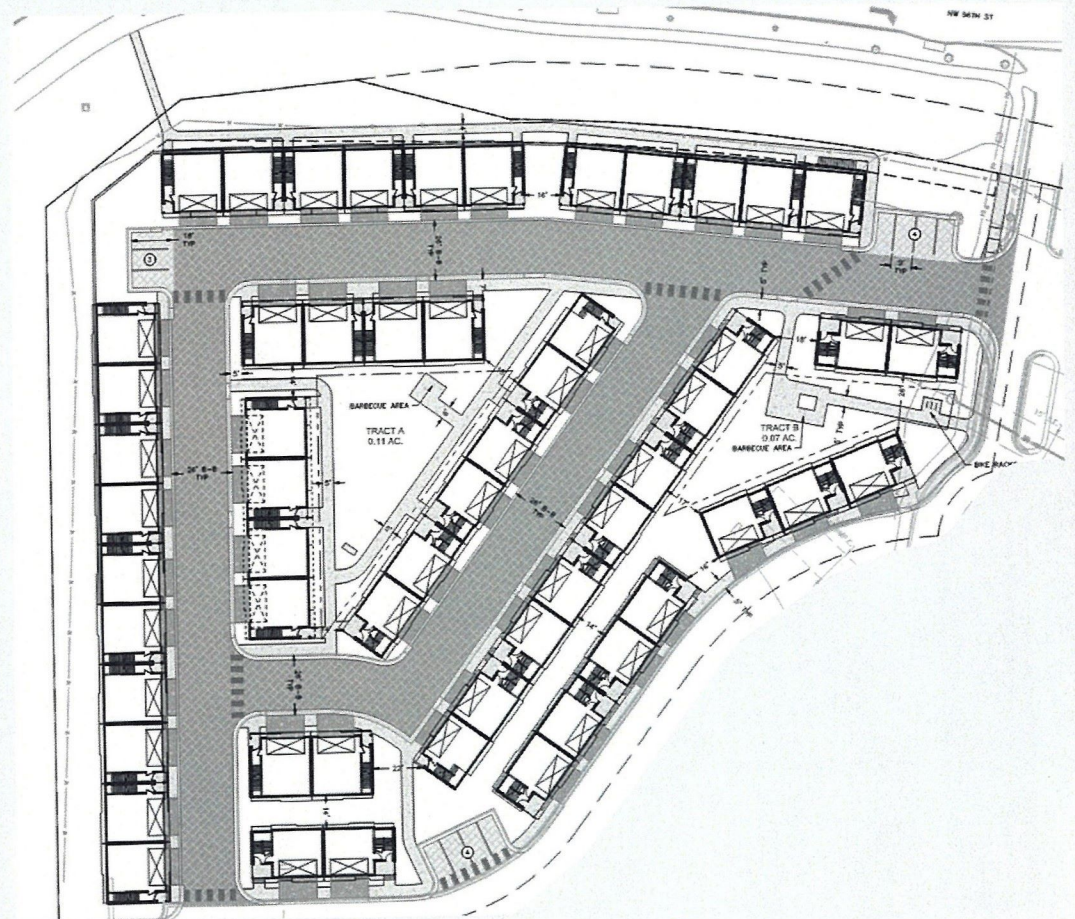
Previously Approved Plans



- **Approved March 7, 2013**
- **52,500 SF of Office/Retail Space**
- **3 Buildings**

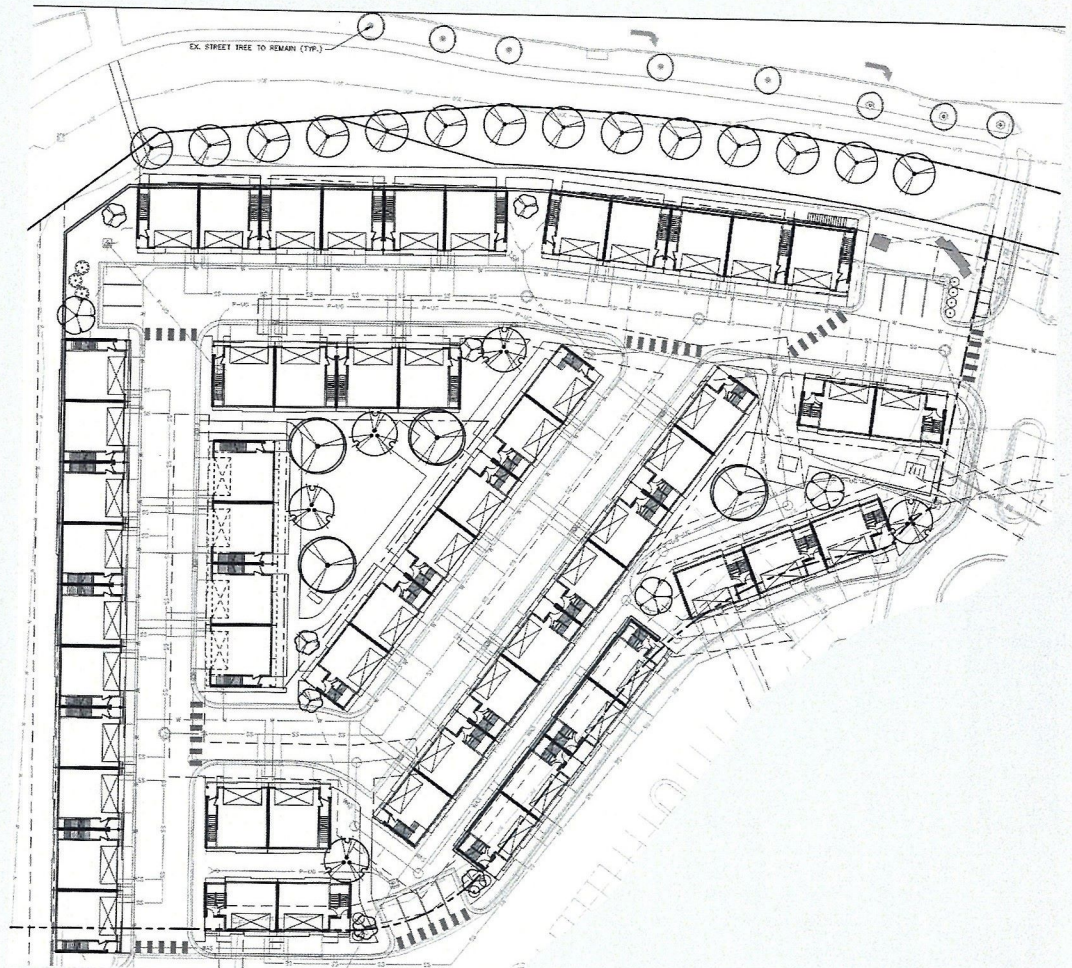
Site Plan

- 56 Residential Townhome Units
- 15 Buildings
- One Lot
- Not For Sale- Single Owner



Landscape Plan

- Additional trees placed along Northeast 96th St.
- Interior open spaces provided with trees and shrubs



Elevations- 96th Street



STREET SIDE

LEFT SIDE



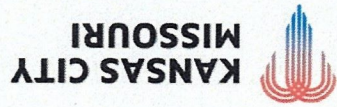
BACK (TYP)

RIGHT SIDE

Major Amendment to MPD Plan

CD-CPC-2023-00146 Approval with Conditions

City Plan Commission Recommendation



City Planning and Development