



KANSAS CITY, MO REDISTRICTING 2021

December 7th, 2021

Redistricting Team –

Engaged Public

Commission

- Stephenie Smith, Chair, At-Large, First District
- Pedro Zamora, At-Large, Fourth District
- Reid Day, At-Large, Sixth District
- Mike Kellam, First District
- Martin Rucker, Second District
- Clinton Adams, Jr., Third District
- Vicki Noteis, Fourth District
- Dr. Cokethea Hill, Fifth District
- Chris Lewellen, Sixth District

City Staff

- Mayor's Office
- Law Department
- City Communications
- City Clerk's Office
- City Planning and Development



Guiding Principles for the City's Redistricting Process –

Section 203(b) of the City's Charter provides that "The Council shall draw new districts, based upon the last official federal census, not later than the last day of December of the year of the publication of the official federal census."

1. Provide for equality in the political process.

- This is done through the rule of one-person one-vote

2. Create "ideal" districts.

- Kansas City's population is 508,090. An ideal district is, therefore, 84,681 people.

3. Understanding the 10% rule.

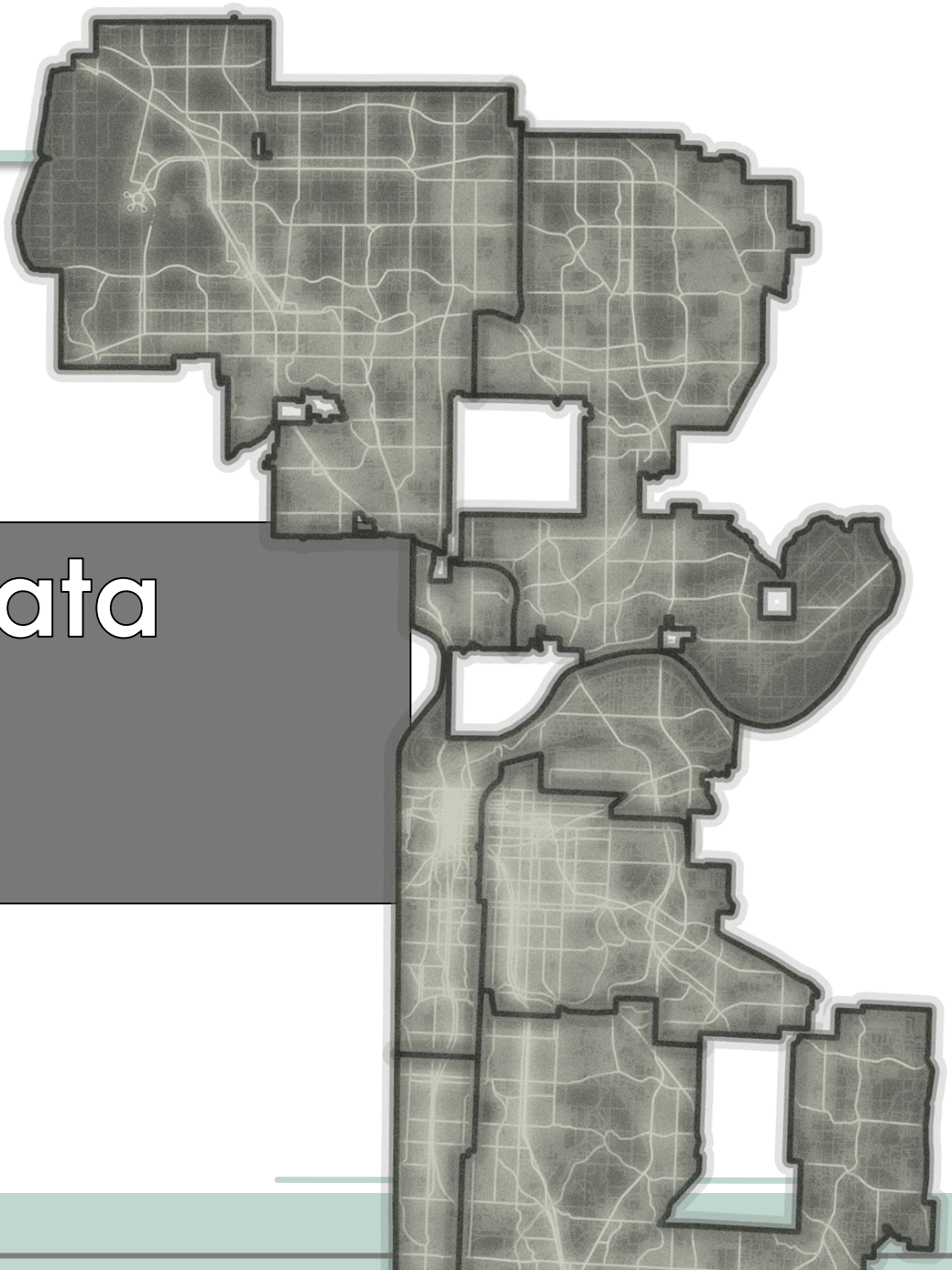
- Recognizing that all districts cannot be the identical size, it is permissible to have districts that deviate by no more than 10% between the largest district and the smallest district.

4. Draw districts that are compact and contiguous.

5. Be mindful of Voting Rights Act implications.

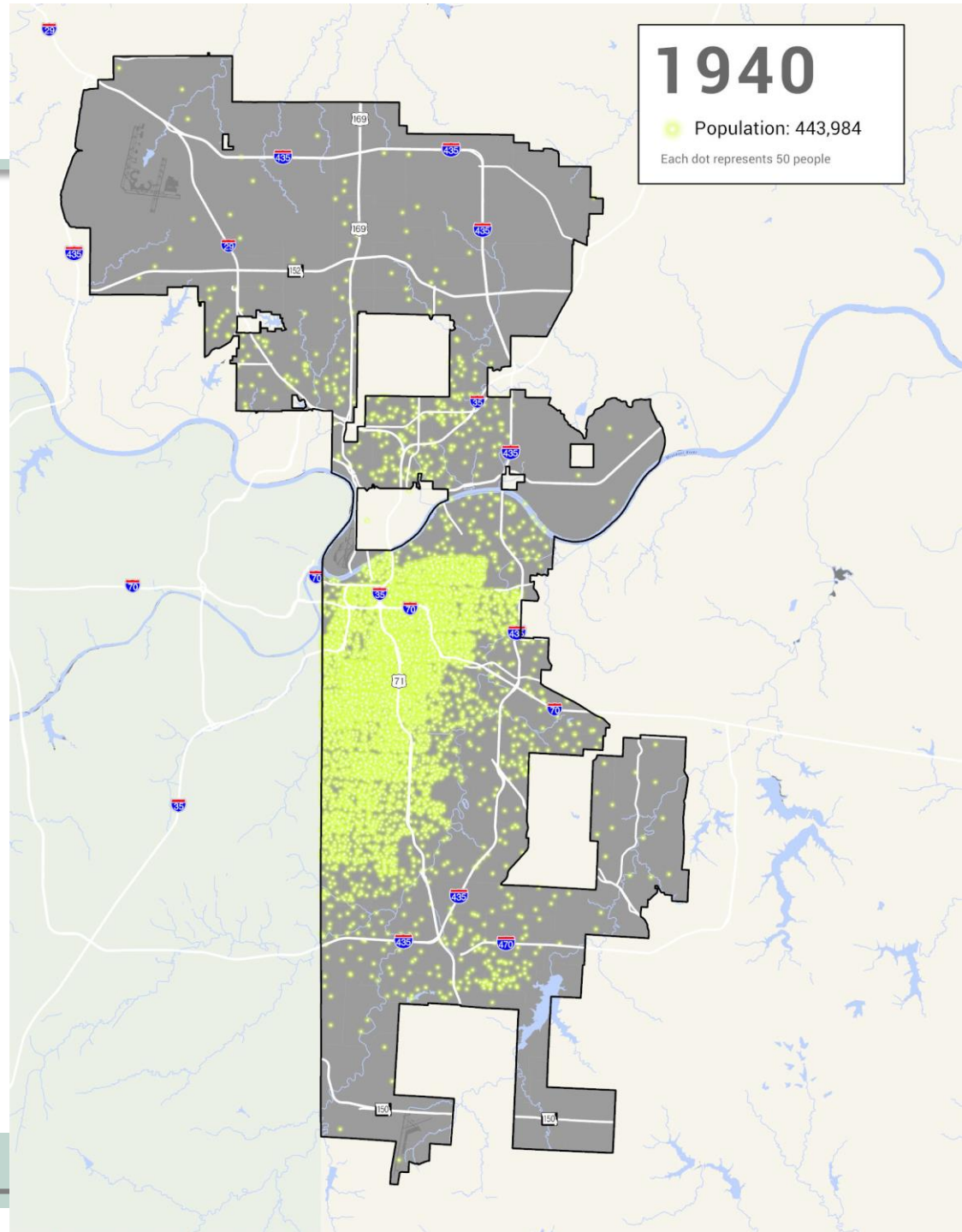
- There must be a racial or ethnic minority group that is sufficiently large and geographically compact to be a majority in a district
- The group must be politically cohesive
- The white majority engages in bloc voting to defeat the preferred candidate of the minority group.

CENSUS 2020 Data Overview



Population Trends

Population Reflects 2020
Kansas City, MO City Limits
with Historic Decennial
Census Totals

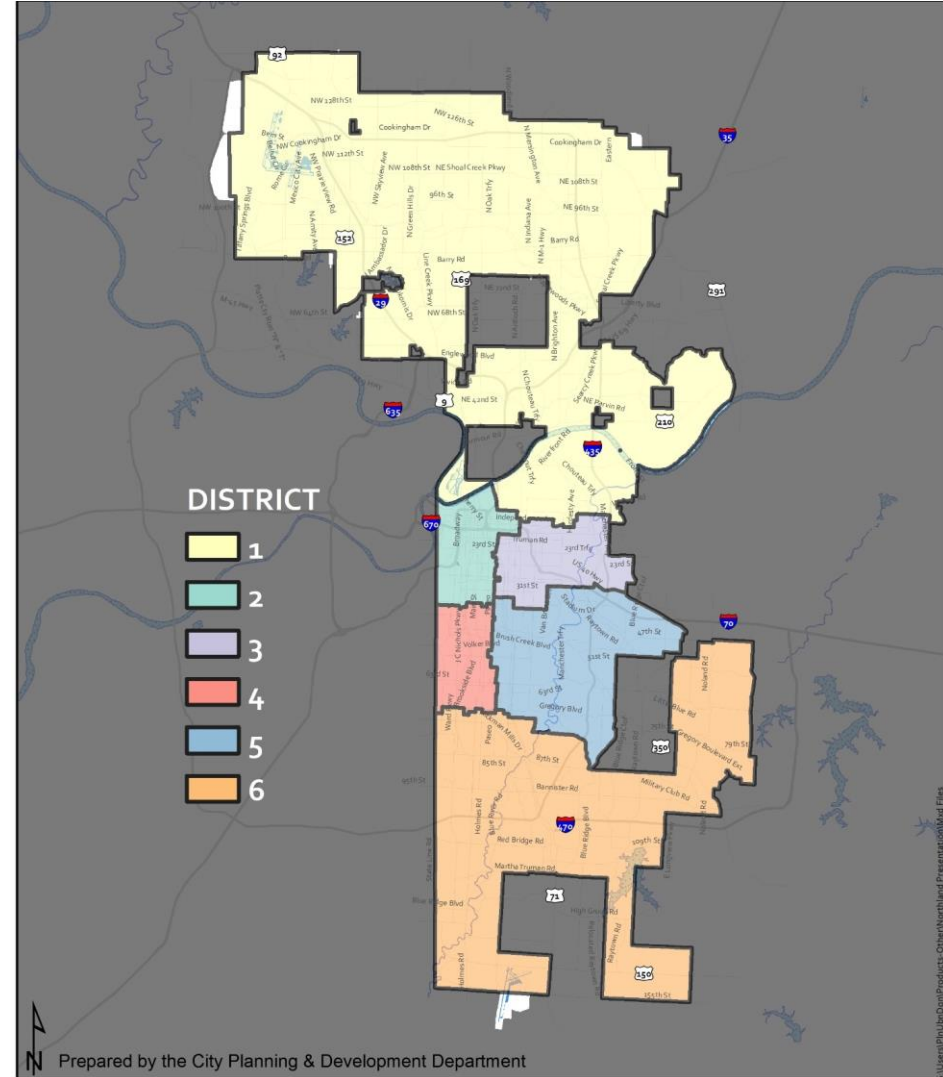


COUNCILMANIC DISTRICTS

1966

Population	Pop. Per District
475,539	79,000

- Illus Davis, Mayor of Kansas City, MO 1963 - 1971
- Lyndon Baines Johnson , President of US 1963 - 1969



COUNCILMANIC DISTRICTS

1968

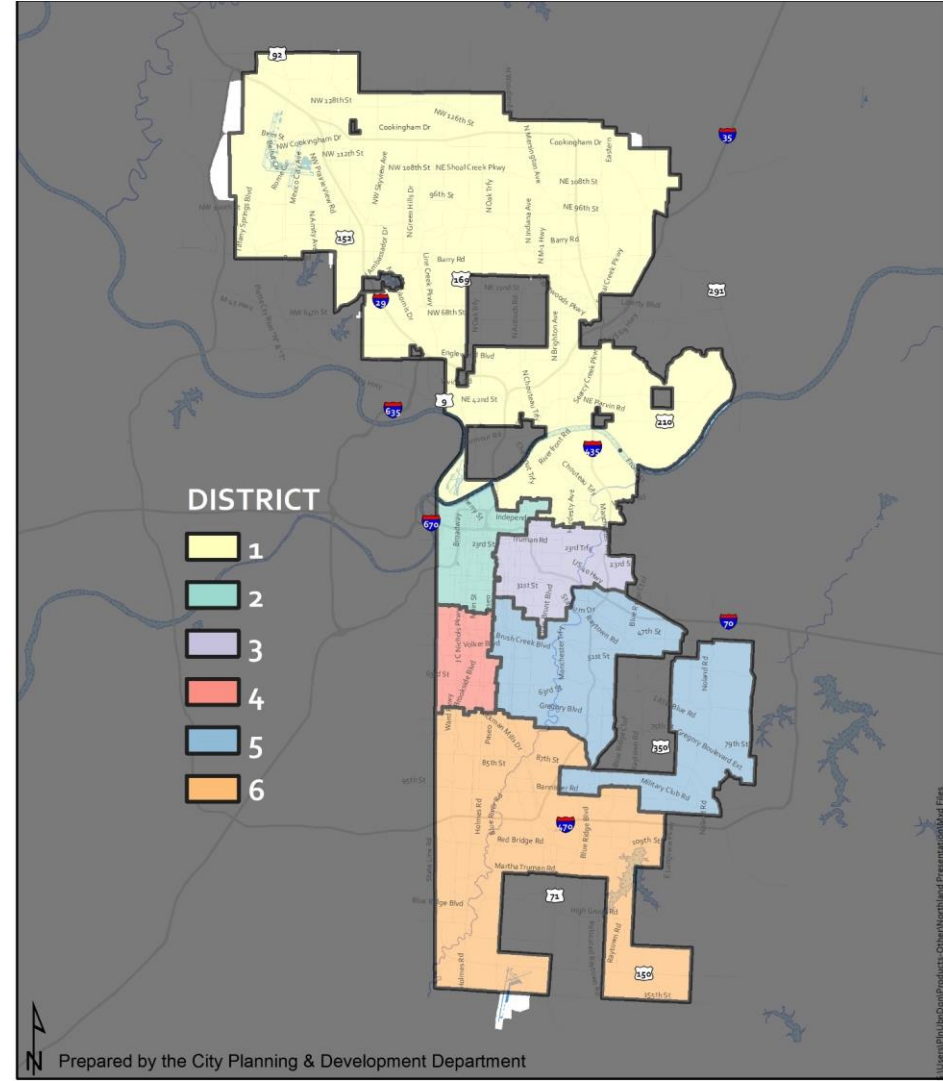
Population

Pop. Per District

475,539

79,000

- Illus Davis, Mayor of Kansas City, MO 1963 - 1971
- Lyndon Baines Johnson, President of US 1963 - 1969

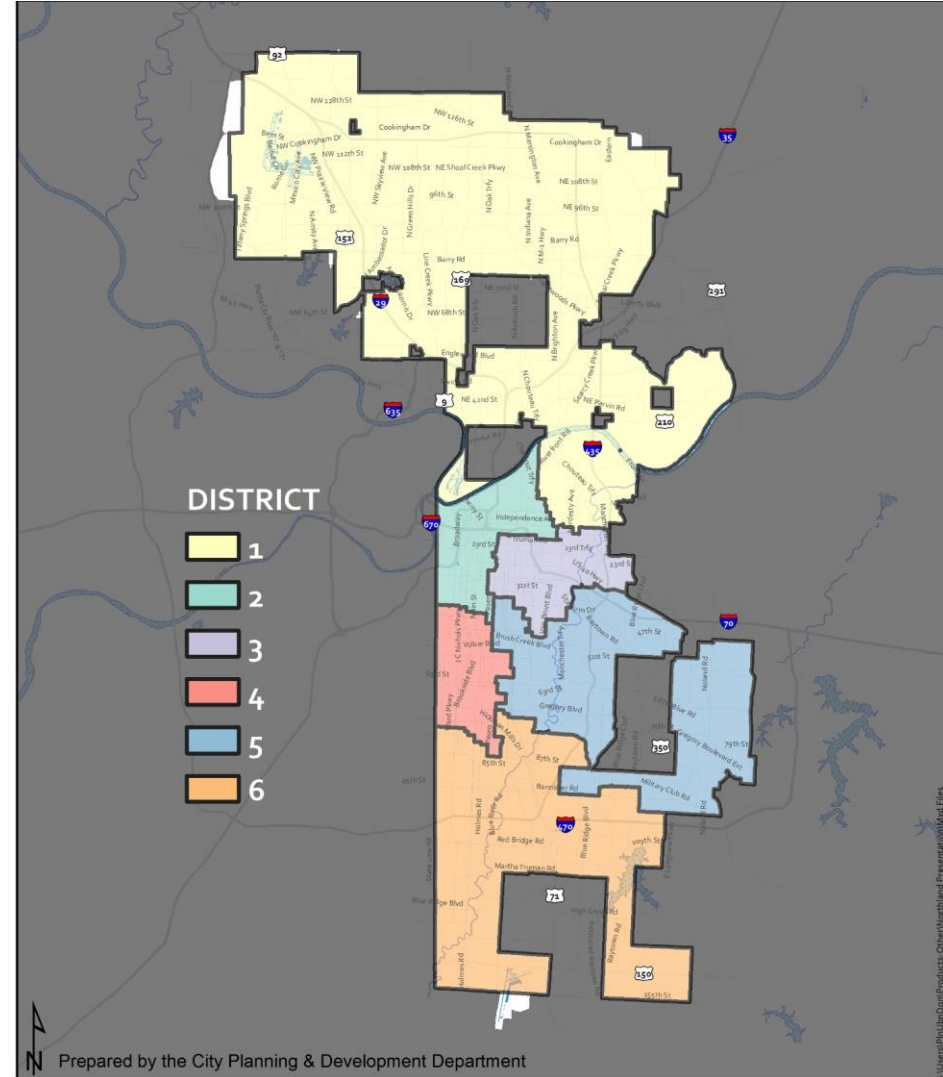


COUNCILMANIC DISTRICTS

1970

Population	Pop. Per District
507,087	85,000

- Illus Davis, Mayor of Kansas City, MO 1963 - 1971
- Richard Nixon, President of US 1969 - 1974

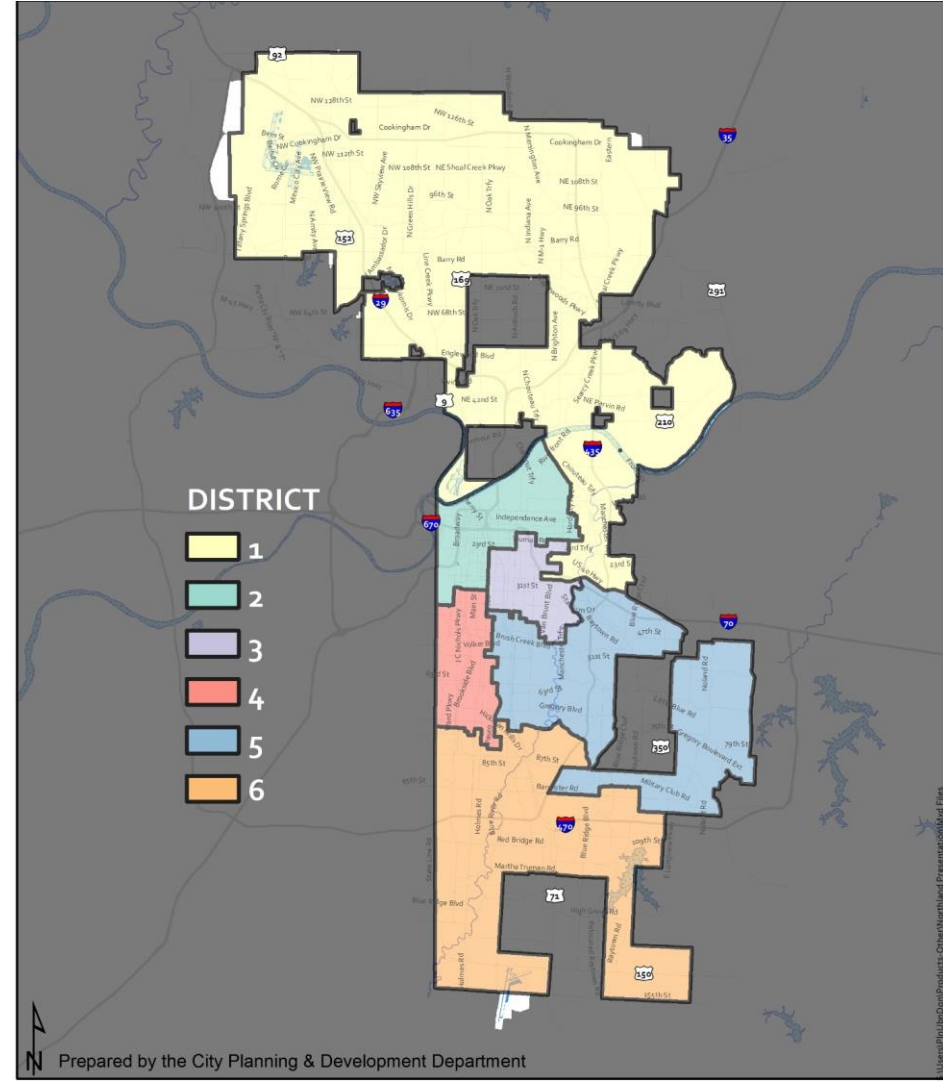


COUNCILMANIC DISTRICTS

1972

Population	Pop. Per District
507,087	85,000

- Charles Wheeler, Mayor of Kansas City, MO 1971 - 1979
- Richard Nixon, President of US 1969 - 1974

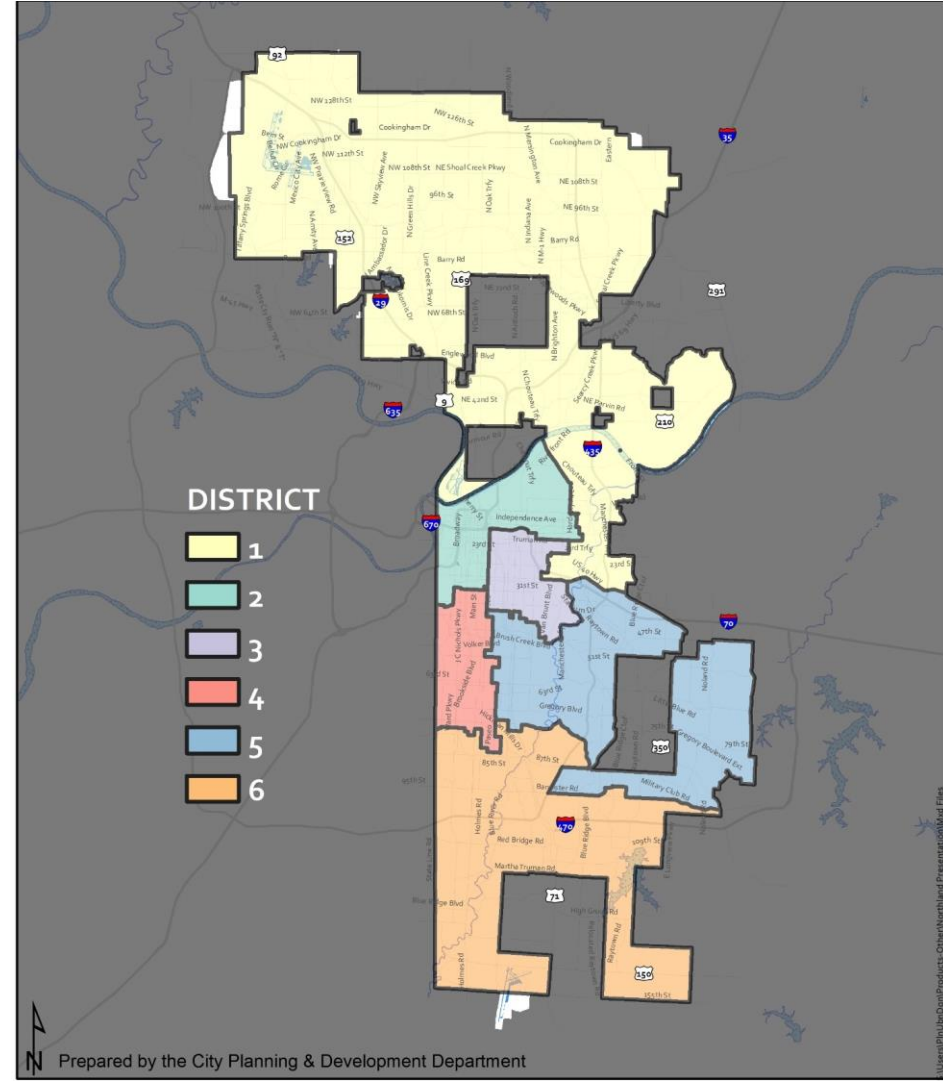


COUNCILMANIC DISTRICTS

1977

Population	Pop. Per District
507,087	85,000

- Charles Wheeler, Mayor of Kansas City, MO 1971 - 1979
- Gerald Ford, President of US 1974 - 1977

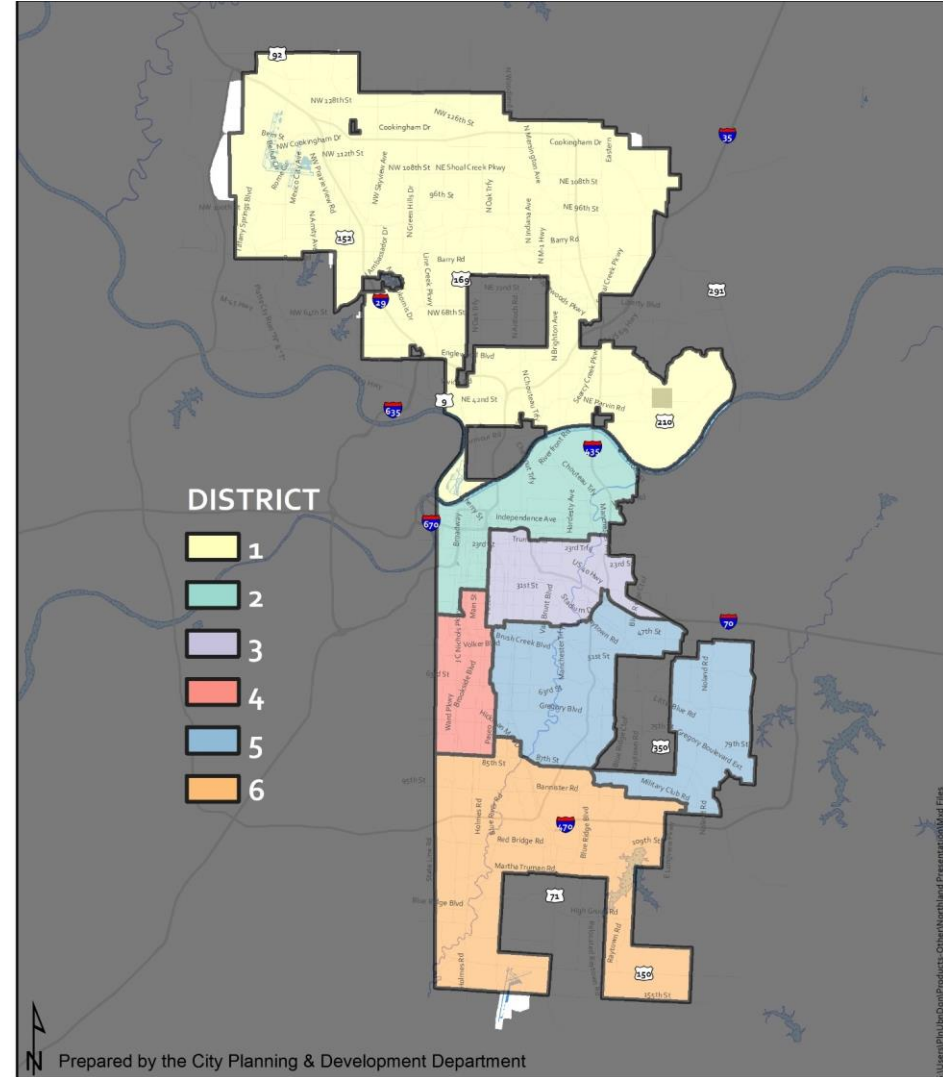


COUNCILMANIC DISTRICTS

1980

Population	Pop. Per District
448,159	75,000

- Richard Berkley, Mayor of Kansas City, MO 1979 - 1991
- Jimmy Carter, President of US 1977 - 1981

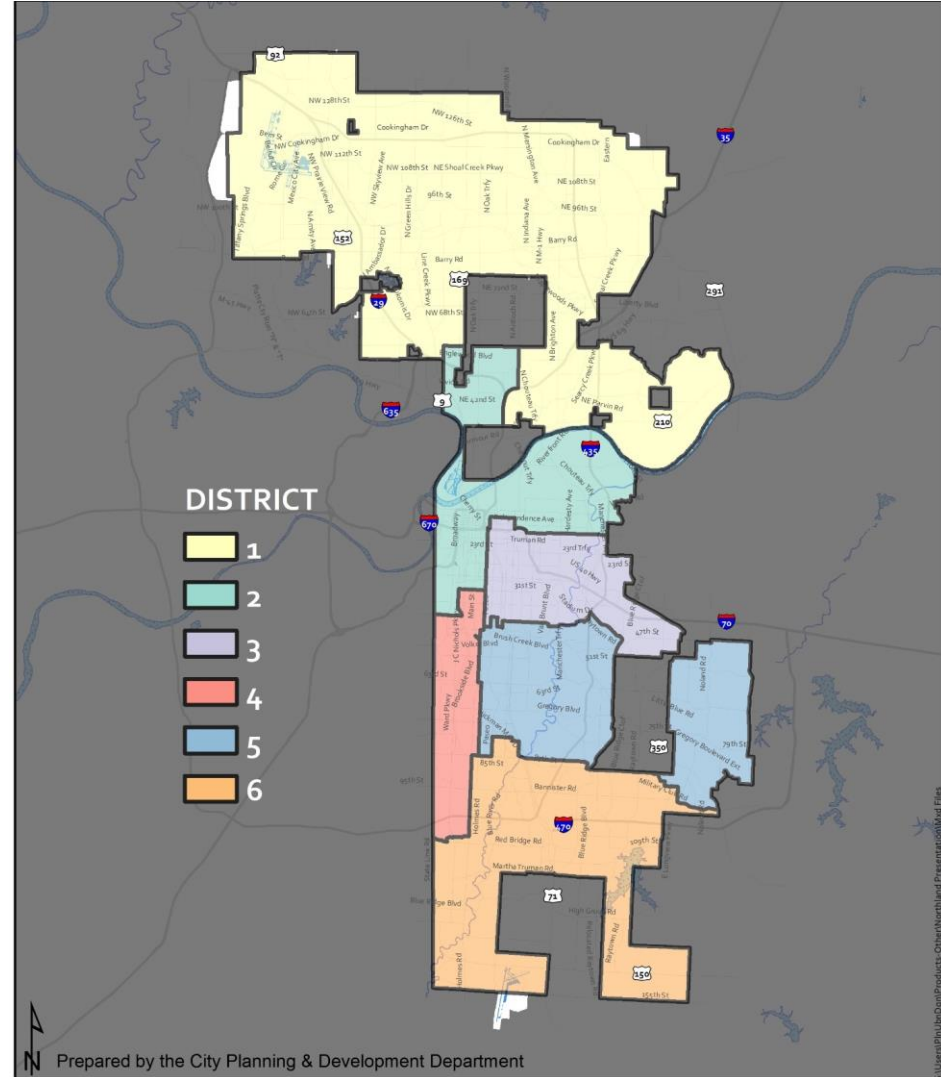


COUNCILMANIC DISTRICTS

1990

Population	Pop. Per District
448,159	75,000

- Richard Berkley, Mayor of Kansas City, MO 1979 - 1991
- George H. W. Bush, President of US 1989 - 1993

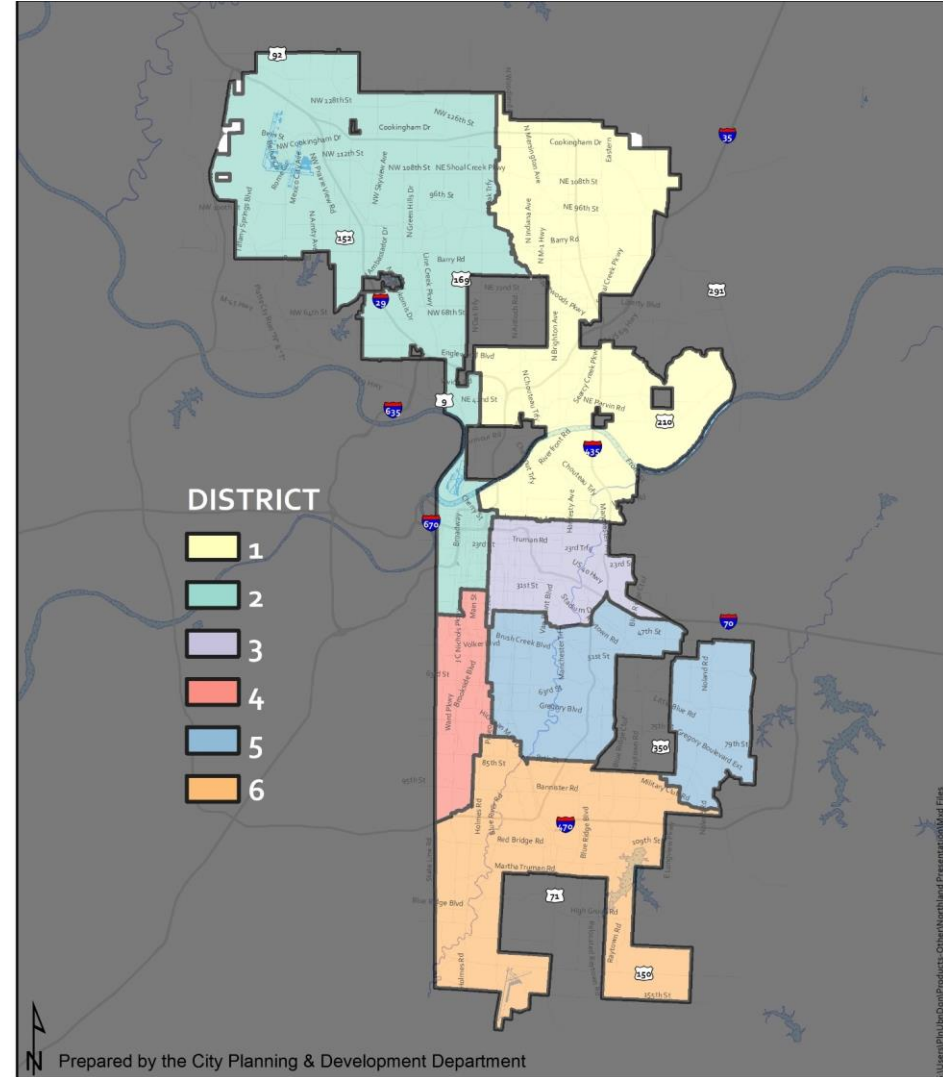


COUNCILMANIC DISTRICTS

1991

Population	Pop. Per District
435,121	72,500

- Emanuel Cleaver, II, Mayor of Kansas City, MO 1991 - 1999
- George H. W. Bush, President of US 1989 - 1993

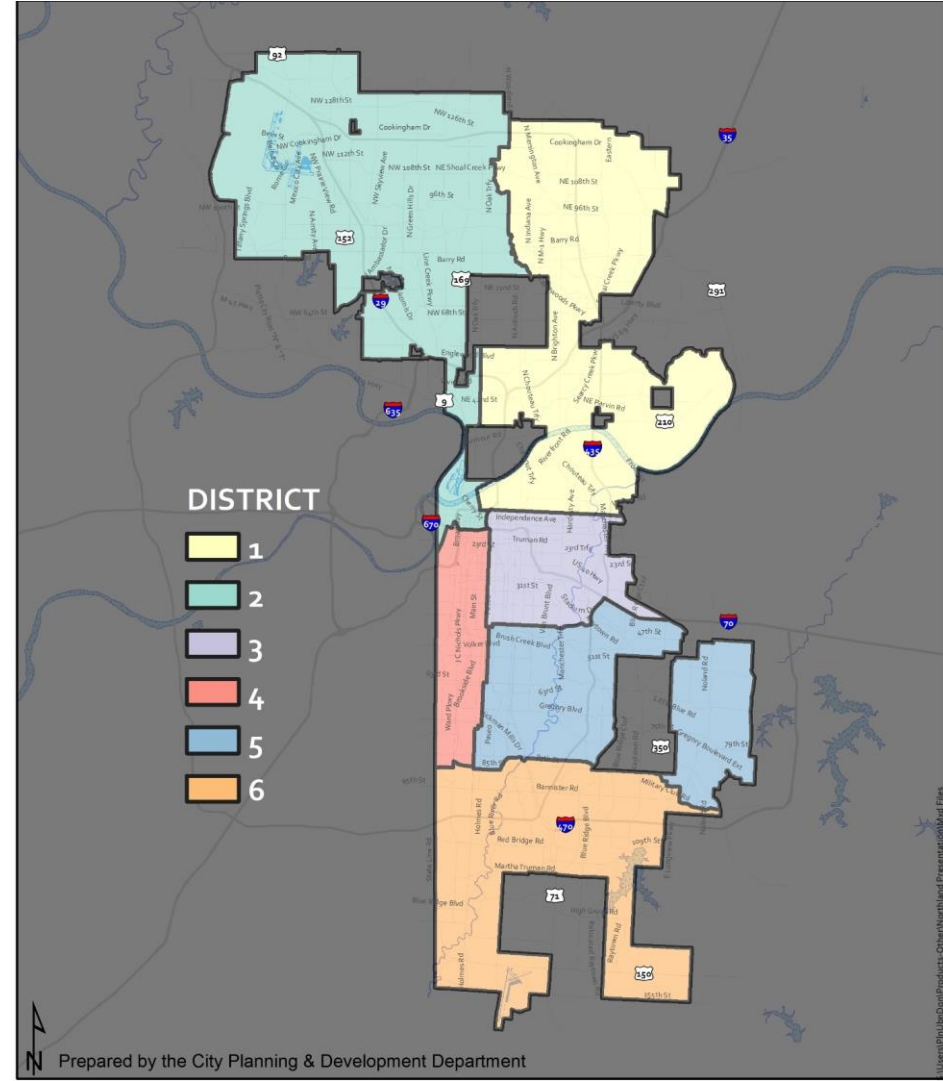


COUNCILMANIC DISTRICTS

2001

Population	Pop. Per District
442,369	74,000

- Kay Barnes, Mayor of Kansas City, MO 1999 - 2007
- Bill Clinton, President of US 1993 - 2001

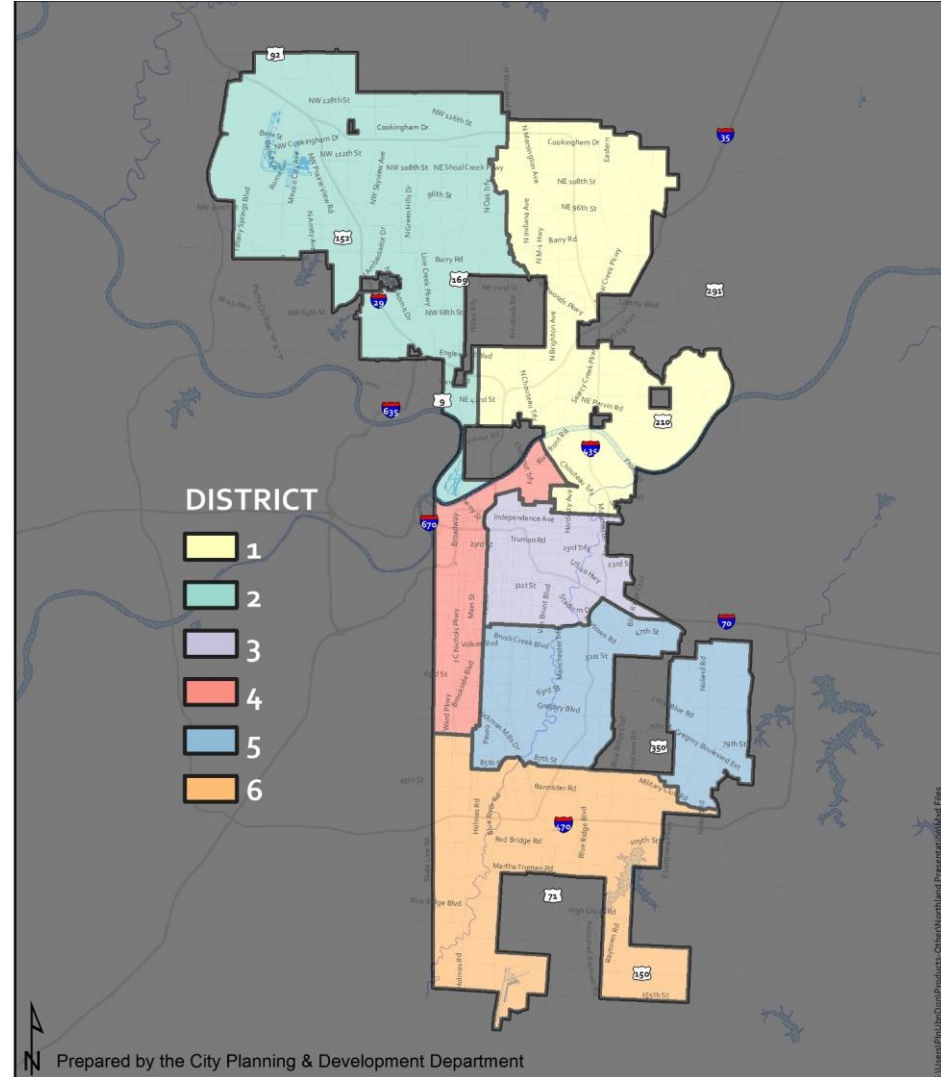


COUNCILMANIC DISTRICTS

2010

Population	Pop. Per District
442,369	74,000

- Mark Funkhouser, Mayor of Kansas City, MO 2007 - 2011
- Barack Obama, President of US 2009 - 2017

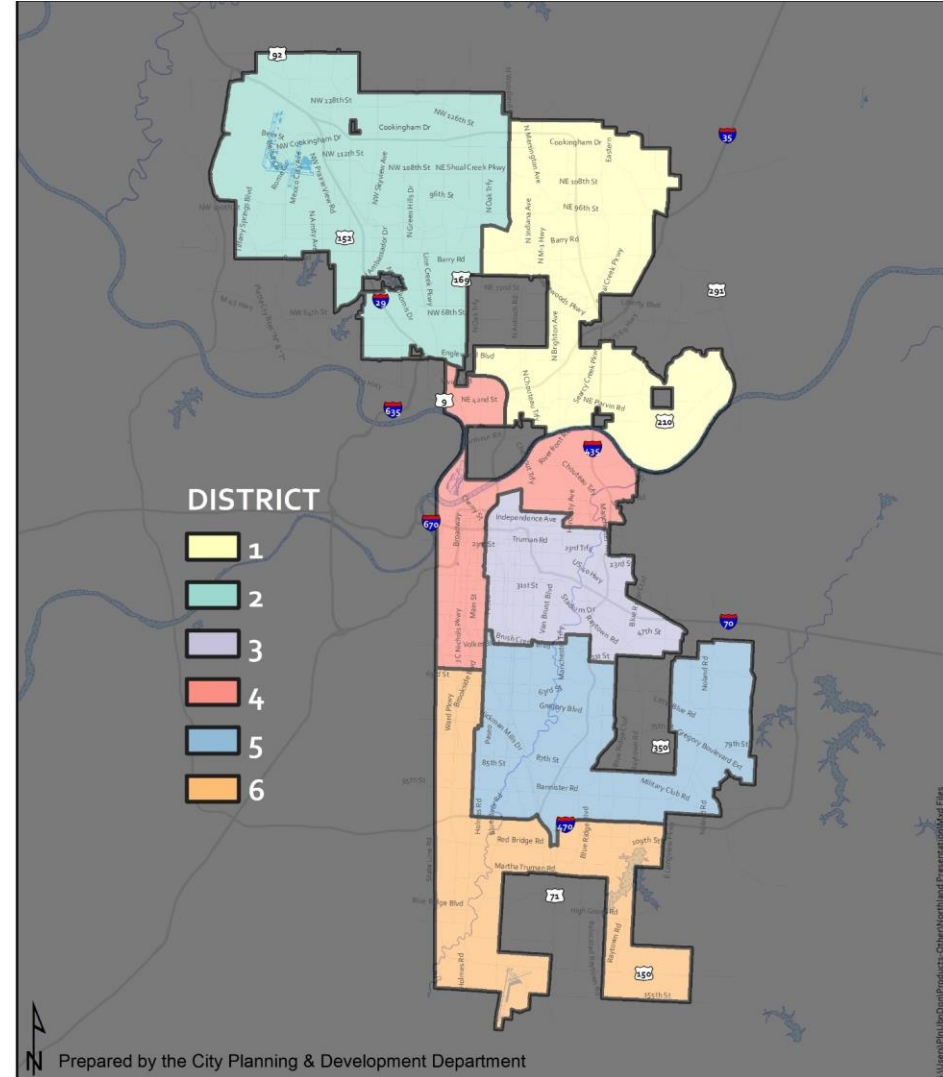


COUNCILMANIC DISTRICTS

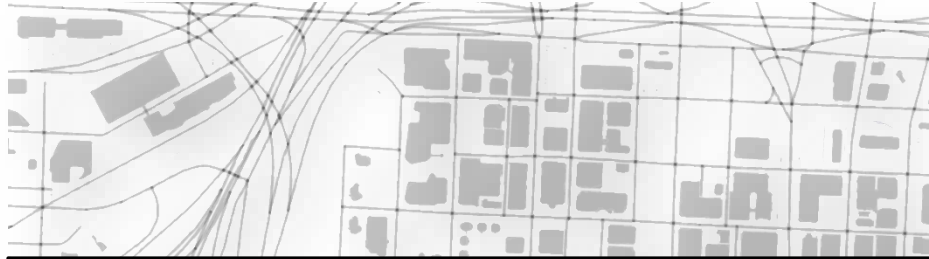
2011

Population	Pop. Per District
459,787	76,500

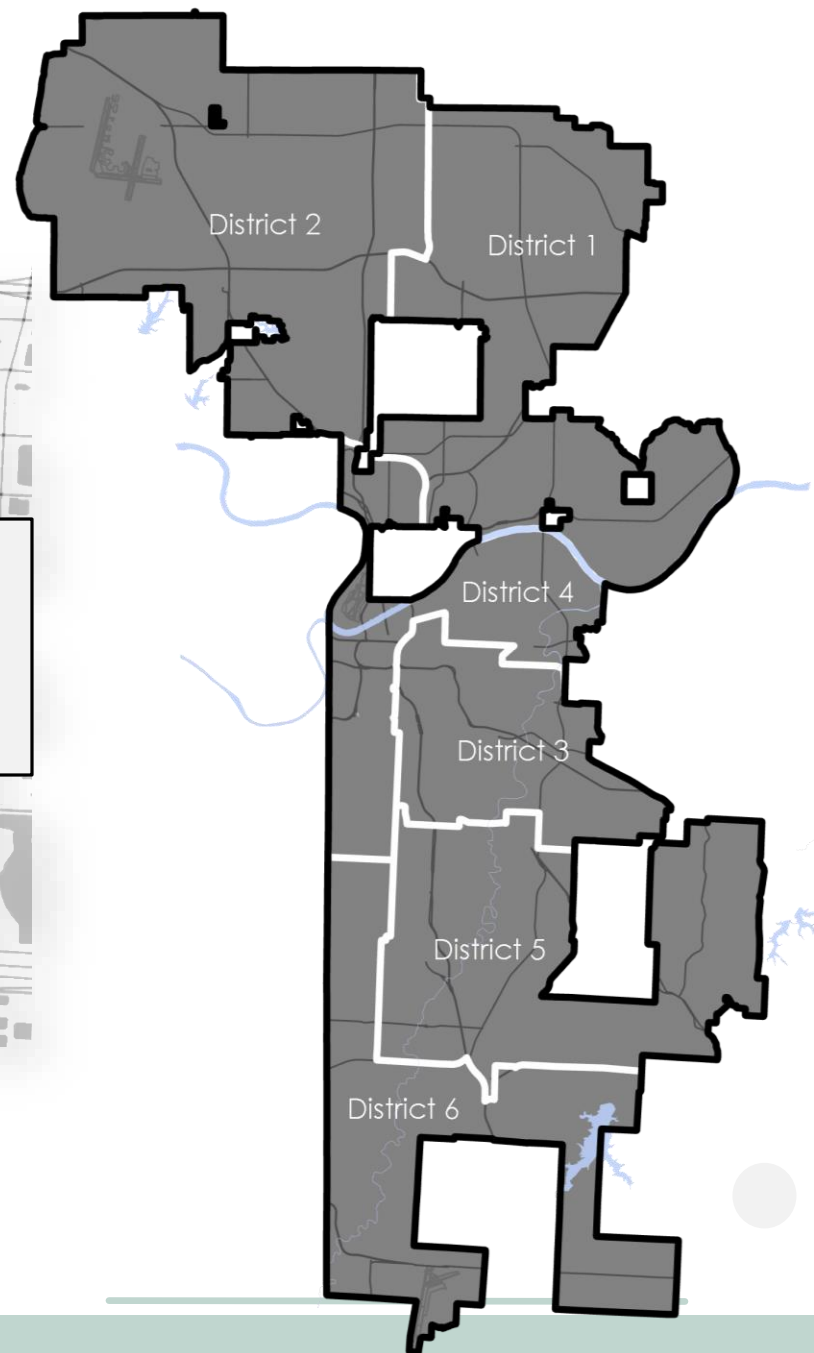
- Sylvester James, Mayor of Kansas City, MO 2011 - 2019
- Barack Obama, President of US 2009 - 2017



Current Map-



**2011 Councilmanic District Map
Ordinance 110832 Dec. 8th, 2011**



KCMO Population



Kansas City, MO – 2000 Population = 441,545

Kansas City, MO – 2010 Population = 459,787

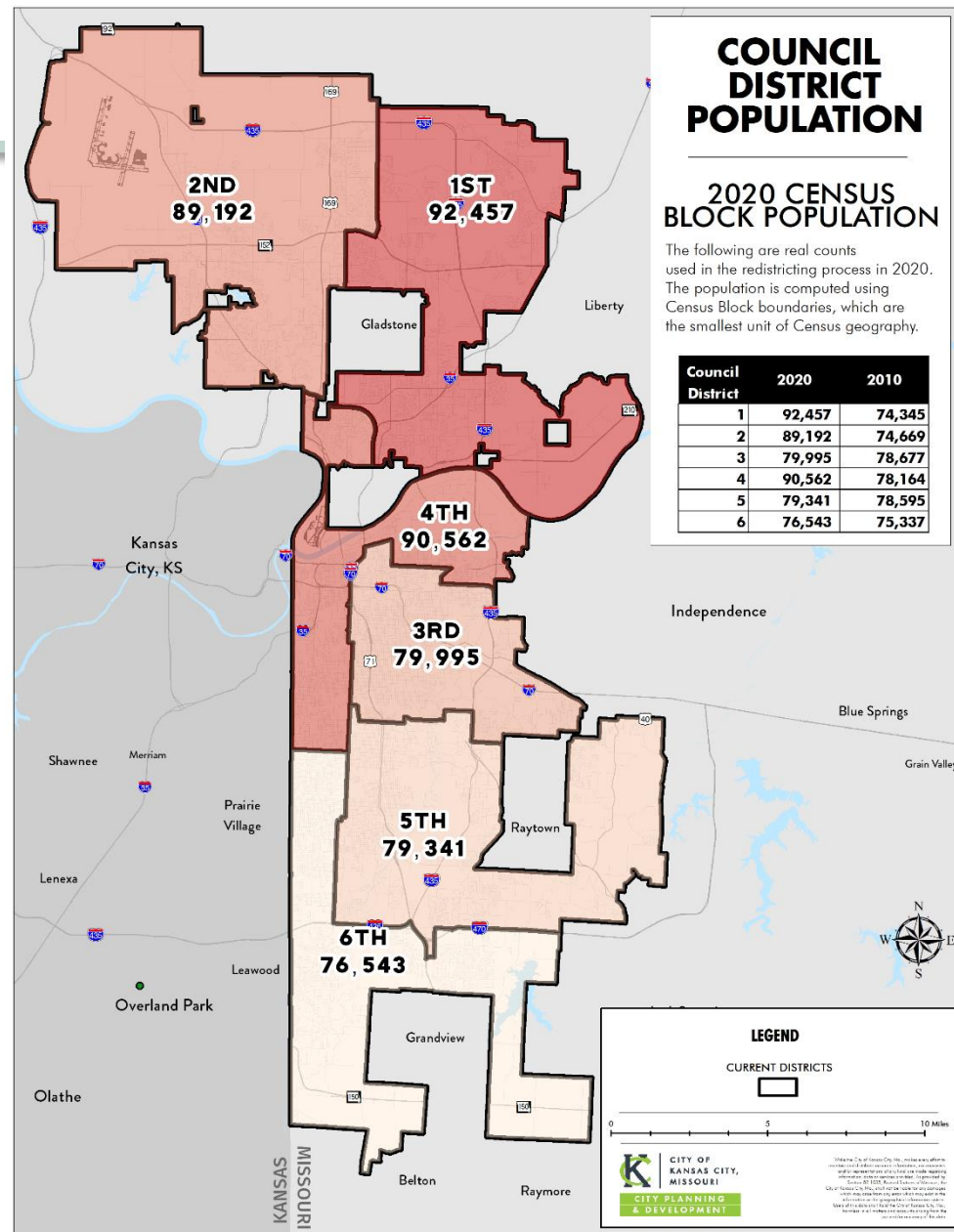
Kansas City, MO – 2020 Population = 508,090

Total Change +10.5% (from 2010 to 2020, 48,303)

Population comparison – 2010 to 2020

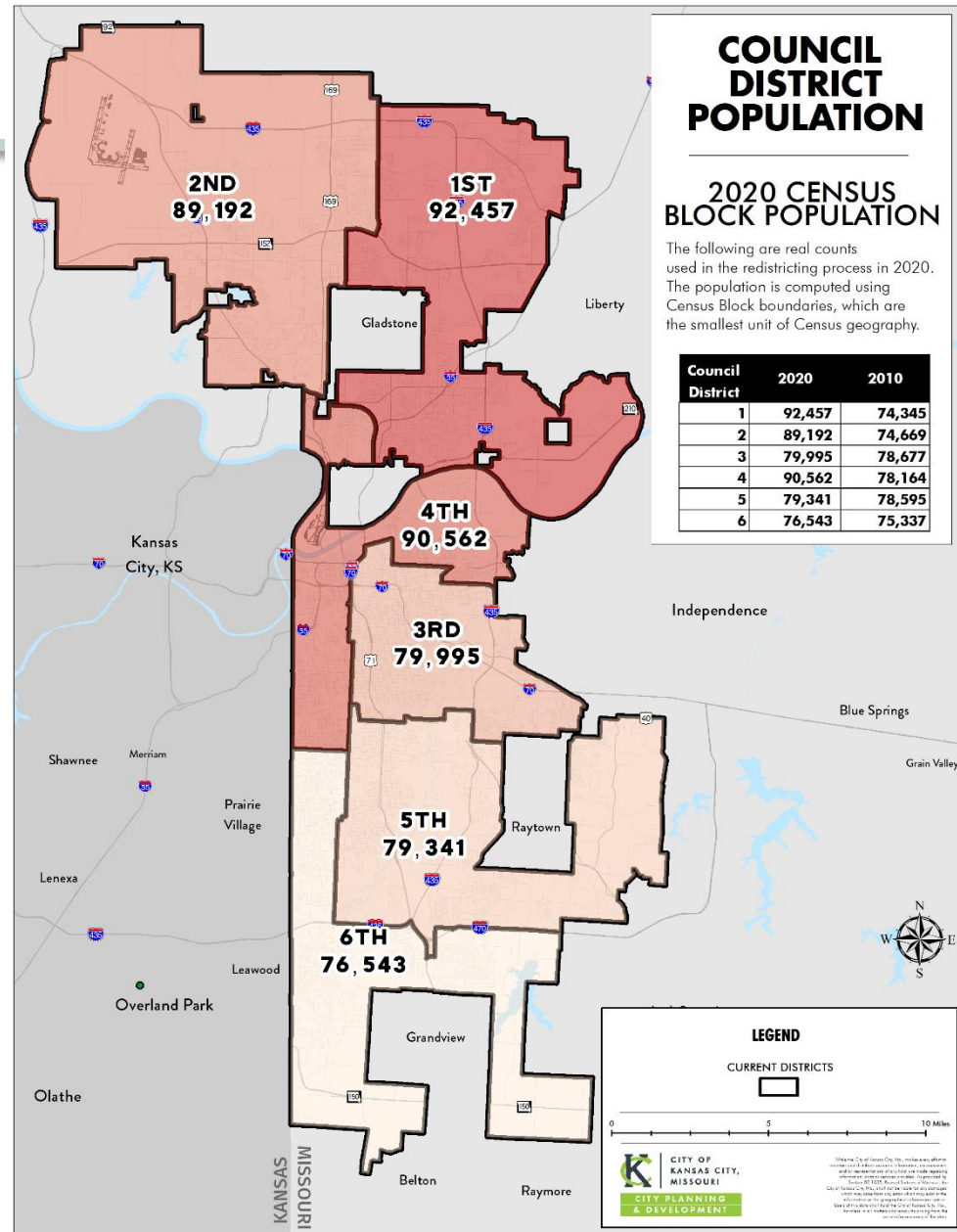
Kansas City, MO – 2020 Population = 508,090

Council District	Census		Absolute Change	% Change
	2010	2020		
1	74,345	92,457	18,112	24.36%
2	74,669	89,192	14,523	19.45%
3	78,677	79,995	1,318	1.68%
4	78,164	90,562	12,398	15.86%
5	78,595	79,341	746	0.95%
6	75,337	76,543	1,206	1.60%
City	459,787	508,090	48,303	10.51%



Population Needed Per District

508,090 divided by 6
 =
 84,682 per district



Considerations

Established
Patterns

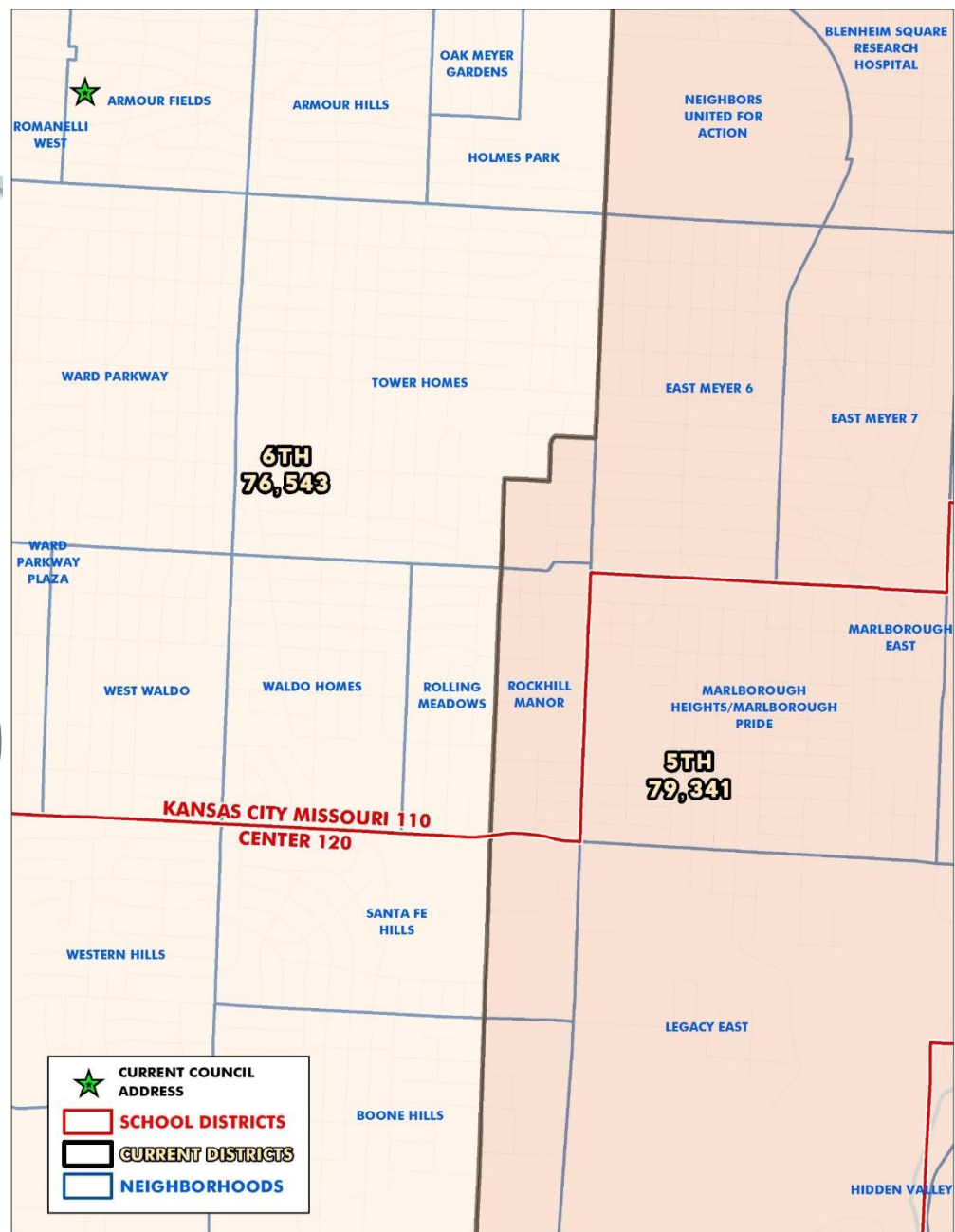
Jurisdictional
boundaries

Minimal
Change

Social
aspects

Neighborhood
boundaries

Simple
shapes



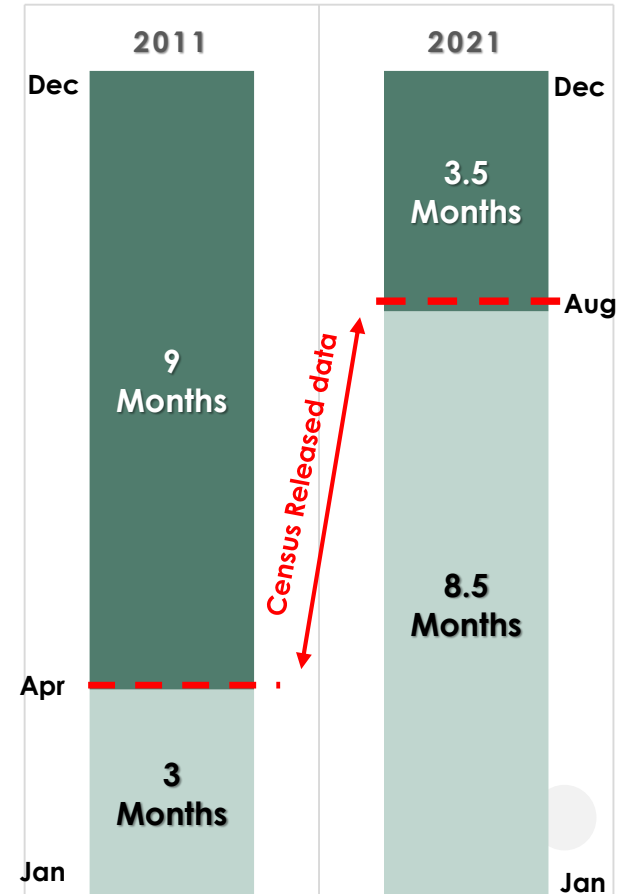
Redistricting Process–

Meetings

- Sept 8th #1 Commission Meeting
- Sept 15th #2 Commission Meeting
- Sept 22th #3 Commission Meeting
- Sept 29th #4 Commission Meeting
- Oct 2nd #1 Public Meeting @ Mohart Center
- Oct 4th #2 Public Meeting @ Northland Neighborhoods, Inc.
- Oct 6th #3 Public Meeting @ South East Community Center
- Oct 13th #5 Commission Meeting
- Oct 20th #6 Commission Meeting
- Oct 27th #7 Commission Meeting
- Nov 3rd #8 Commission Meeting
- Nov 6th #4 Public Meeting @ Baptiste Educational Center
- Nov 8th #5 Public Meeting @ Gregg-Klice Community Center
- Nov 10th #9 Commission Meeting
- Nov 15th #10 Commission Meeting
- Nov 22nd #11 Commission Meeting
- Dec 1st #12 Commission Meeting

ALTERED TIMELINE

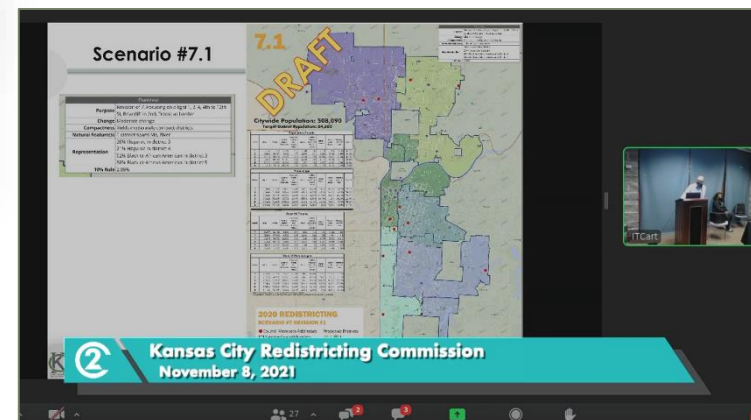
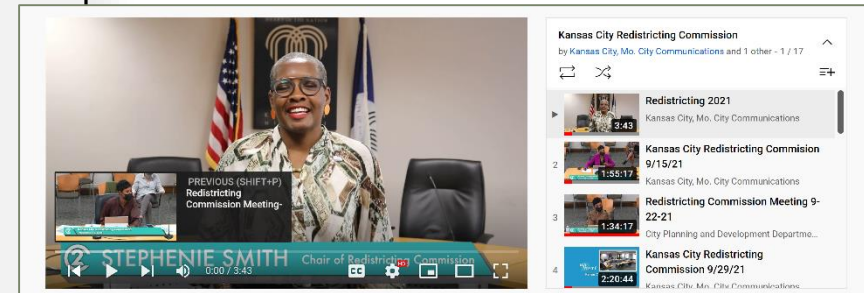
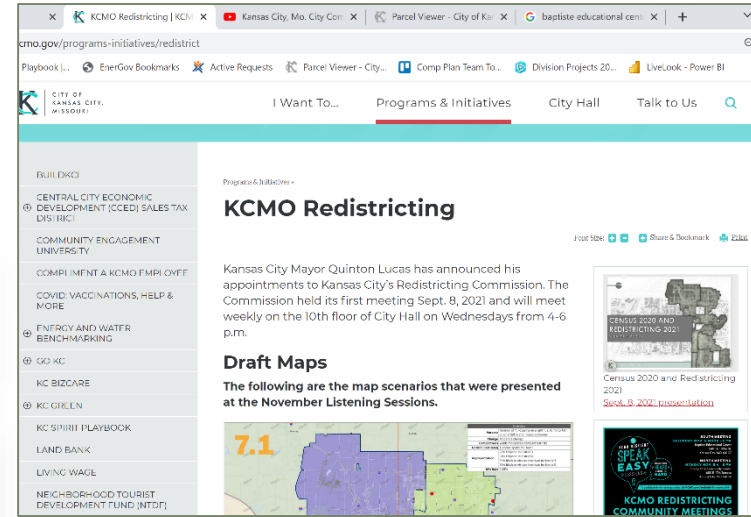
- Public Redistricting
- Census Compiling Data



Redistricting Process—

Additional Engagement Opportunities

- **Redistricting Web Page**
 - <https://www.kcmo.gov/programs-initiatives/redistrict>
 - Meeting Notification
 - Draft Maps (41 map iterations reviewed and considered)
 - Context Data and Reference Material
 - Community Feedback Form (204 community feedback comments received)
 - Virtual Participation Link (Zoom Meeting)
 - YouTube Playlist
- In-meeting Comment Card at 5 Public Meetings
- Virtual Meeting Chat Comments (Commission & Public Meetings)
- Neighborhood & Small Group Presentations as requested



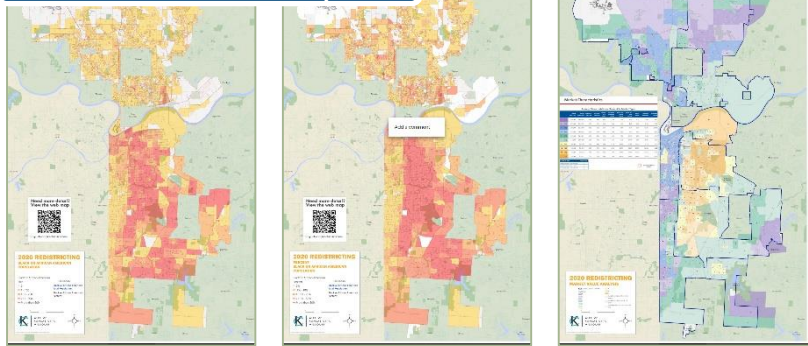
Additional Resources & Considerations—

Scenario Mapping

Historic Data

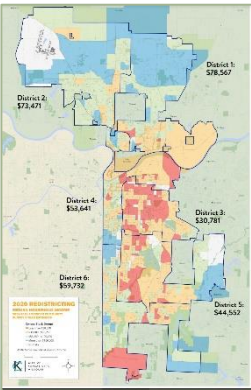
Council District	Census		Absolute Change	% Change	% From M	
	2010	2020			2010	
1	74,345	92,457	18,112	24.36%	-3.0%	
2	74,669	89,192	14,523	19.45%	-2.6%	
3	78,677	79,995	1,318	1.68%	2.7%	
4	78,164	90,562	12,398	15.86%	2.0%	
5	78,595	79,341	746	0.95%	2.6%	
6	75,337	76,543	1,206	1.60%	-1.7%	
City Total	459,787	508,090	48,303	10.51%	5.7%	

Pattern Analysis

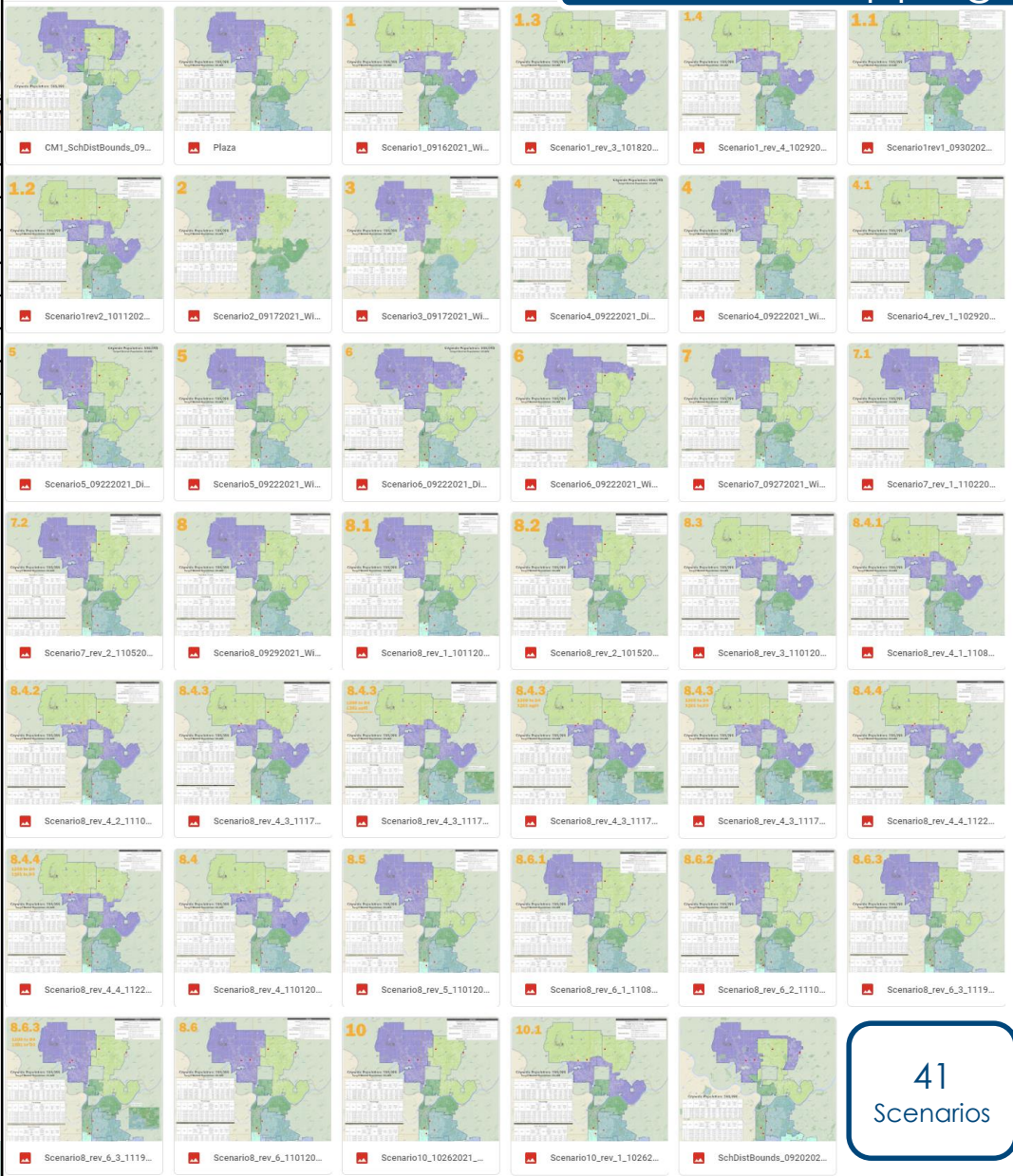


Census Data

	4	5	6			
Total Population	92,457	89,192	79,995	90,562	79,341	76,543
percent of city	18.20%	17.55%	15.74%	17.82%	15.62%	15.06%
White alone	69,256	64,403	17,630	58,765	23,768	49,161
percent of district	74.91%	72.21%	22.04%	62.88%	29.96%	64.23%
Black or African American alone	8,374	10,053	41,691	10,080	45,136	17,283
percent of district	9.06%	11.27%	52.12%	11.13%	56.89%	22.58%
American Indian and Alaska Native alone	532	467	689	718	440	375
percent of district	0.58%	0.52%	0.86%	0.79%	0.56%	0.49%
Asian alone	3,282	3,120	1,801	5,125	1,254	1,584
percent of district	3.57%	3.50%	2.25%	5.66%	1.59%	2.07%
Native Hawaiian and Other Pacific Islander alone	309	661	176	190	87	78
percent of district	0.33%	0.74%	0.22%	0.21%	0.11%	0.10%
Some Other Race alone	2,500	2,304	10,090	8,281	2,848	2,040
percent of district	2.70%	2.58%	12.91%	9.14%	3.59%	2.67%
Population of two or more races:	8,402	6,184	7,918	9,403	5,808	6,022
percent of district	9.09%	6.93%	9.90%	10.38%	7.32%	7.87%
Hispanic or Latino (of any race)	7,890	7,593	17,254	17,141	5,670	5,321
percent of district	8.64%	8.51%	21.37%	18.93%	7.13%	6.95%
Over 18 - Total Population	67,520	67,910	58,808	76,902	61,068	61,528
percent of district	73.02%	76.14%	73.63%	84.92%	76.97%	80.38%
Over 18 - White alone	52,424	50,997	14,488	51,414	20,417	41,731



Shared with me > Census 2020 > Scenarios



41 Scenarios



Commission Priorities–

- **Be Supportive of Voting Rights Act**
 - **Maintain 3rd & 5th Districts as Black or African American Majority**
- **Create Boundaries that Enhance Hispanic Representation in District 4**
- **Enhance Overall Representation**
- **Create Balanced Districts**
 - **10% Rule One Person, One Vote**
- **Respect Existing Boundaries & Patterns**
 - **Neighborhood, Institutional, Social**
- **Focus on Human Impact**
 - **Engage the Public**
 - **Utilize Community Feedback**
 - **Use Plain Language**
 - **Be Transparent**

Rationale & Considerations–

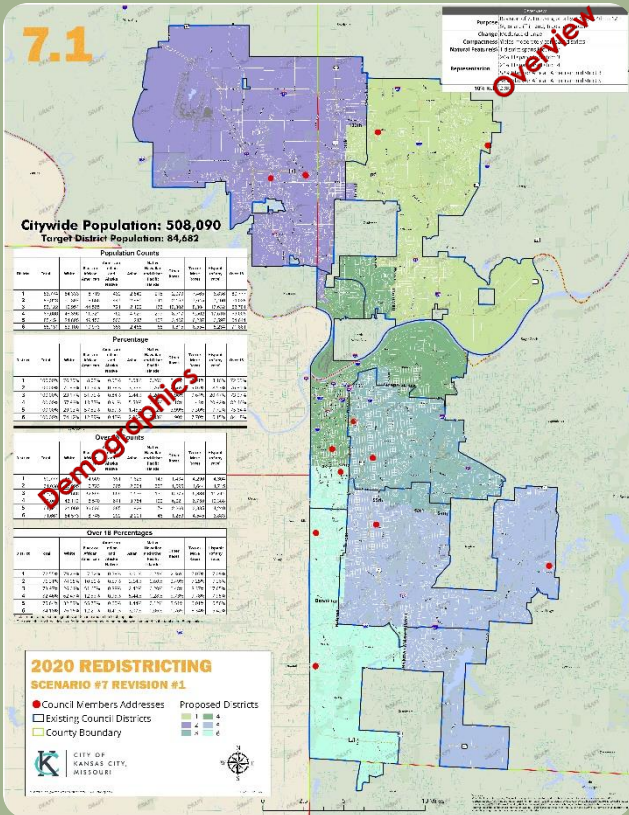
- Kansas City's population grew by 10.5% to 508,090. New growth elevates the number of residents per district to 84, 682 from 76,500 in 2011.
- Exponential growth in Districts 1,2, and 4 requires population shedding in those districts
- Districts 3, 5, and 6 need to add thousands of residents to produce balanced districts.
- The City's Geography: 320 square miles, irregular shape, 4 cities within KCMO, 14 school districts, and the Missouri River.
- Preserving the African-American majority in Districts 3 and 5 pursuant to the Voting Rights Act.
- Bolstering Latinx representation in District 4 by keeping community groups together.
- Pushing the southern and western border of District 5, significantly altering the southern part of the City.
- Raising the northern boundary of District 6 from 59th St. to 43rd St. to gain the necessary population for a balanced district.
- Adding more population north of the river to District 4 therefore increasing the diversity within the District.
- Moving the Country Club Plaza, UMKC and other notable institutions from District 4 to District 6.
- Improving representation of northland residents that live south of Barry Rd./Hwy. 152 based on socio-economic status.
- Preserving Troost Ave. as a dividing Council District line.

Challenges

- The City's Geography: approximately 320 square miles, irregular shape, 4 cities within KCMO, 14 school districts, and the Missouri river.
- Exponential growth in the Districts 1, 2 and 4.
- Protecting minority voting rights and representation.
- Keeping neighborhoods, school districts, and voting precincts together.
- Competition over resources between newer parts of the city for development and older parts of the city for redevelopment.
- Each of the 6 council districts have multiple, and sometimes unrelated or competitive issues to address due to size.

Minority Report

- Concentration of growth north of Hwy 152 will unbalance population numbers.
- Horizontal configuration will split school districts into different council districts.
- Horizontal configuration will divide council districts into different counties, creating new obstacles to collaborative funding.
- Horizontal configuration creates an impediment to racial and socio-economic diversity and inclusivity.
- A large portion of Northland support for the horizontal configuration was from the 64117 zip code; limited perspective is concerning.



Population Counts

District	Total	White	Black or African American	American Indian and Alaska Native	Asian	Native Hawaiian and Other Pacific Islander	Other Races	Two or More Races	Hispanic (of any race)	Over 18
1	83,774	64,333	6,719	432	2,540	215	2,070	7,485	6,836	60,777
2	83,624	60,159	9,657	450	2,969	841	2,144	7,604	7,151	63,739
3	85,273	18,987	44,143	731	1,695	176	11,073	8,485	18,809	63,225
4	85,715	49,824	12,835	764	5,089	300	7,752	9,377	16,289	70,563
5	85,363	25,067	48,685	494	1,253	103	3,427	6,334	6,701	64,502
6	84,341	62,818	10,578	353	2,440	66	1,597	6,489	5,183	71,020

Percentage

District	Total	White	Black or African American	American Indian and Alaska Native	Asian	Native Hawaiian and Other Pacific Islander	Other Races	Two or More Races	Hispanic (of any race)	Over 18
1	100.00%	76.79%	8.02%	0.52%	3.03%	0.26%	2.47%	8.91%	8.16%	72.55%
2	100.00%	71.94%	11.55%	0.54%	3.55%	0.77%	2.56%	9.09%	8.55%	76.22%
3	100.00%	22.27%	51.77%	0.86%	1.99%	0.21%	12.99%	9.93%	22.06%	74.14%
4	100.00%	57.85%	14.97%	0.89%	5.91%	0.35%	9.04%	10.34%	19.00%	82.32%
5	100.00%	29.37%	57.03%	0.58%	1.47%	0.12%	4.01%	7.42%	7.95%	75.56%
6	100.00%	74.48%	12.54%	0.42%	2.89%	0.08%	1.89%	7.65%	6.15%	84.21%

Over 18 Counts

District	Total	White	Black or African American	American Indian and Alaska Native	Asian	Native Hawaiian and Other Pacific Islander	Other Races	Two or More Races	Hispanic (of any race)
1	60,777	48,156	4,569	351	1,828	143	1,434	4,296	4,304
2	63,739	47,752	6,694	389	2,319	382	1,587	4,636	4,708
3	63,225	15,737	32,894	576	1,307	128	7,124	5,459	11,999
4	70,563	44,211	9,297	630	4,015	193	5,885	6,832	11,641
5	64,502	21,298	35,597	377	936	80	2,282	3,932	4,284
6	71,020	54,317	8,451	290	2,179	44	1,241	4,498	3,839

Over 18 Percentages

District	Total	White	Black or African American	American Indian and Alaska Native	Asian	Native Hawaiian and Other Pacific Islander	Other Races	Two or More Races	Hispanic (of any race)
1	72.55%	79.23%	7.52%	0.58%	3.01%	0.24%	2.36%	7.07%	7.08%
2	76.22%	74.92%	10.50%	0.58%	3.64%	0.60%	2.49%	7.27%	7.39%
3	74.14%	24.89%	52.03%	0.91%	2.07%	0.20%	11.27%	8.63%	18.98%
4	82.32%	62.65%	13.18%	0.89%	5.69%	0.27%	7.91%	9.40%	16.50%
5	75.56%	33.02%	55.19%	0.58%	1.45%	0.12%	3.54%	6.10%	6.64%
6	84.21%	76.48%	11.90%	0.41%	3.07%	0.06%	1.75%	6.33%	5.41%

* Total refers to the percentage of over 18 compared to the total population.
 * The racial/ethnic breakdowns refer to the percentage of that breakdown compared to the total over 18 population.

Overview

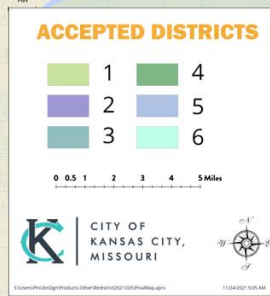
Purpose	Respect county boundaries; District 5 covers SE "leg"
Change	Significant change for district 5 & district 6
Compactness	Yields moderately compact districts; Creates broad district 5 & district 6
Natural Feature(s)	1 district spans Mo. River
Representation	22% Hispanic in district 3 19% Hispanic in district 4 52% Black or African American in district 3 57% Black or African American in district 5
10% Rule	3%

Overview

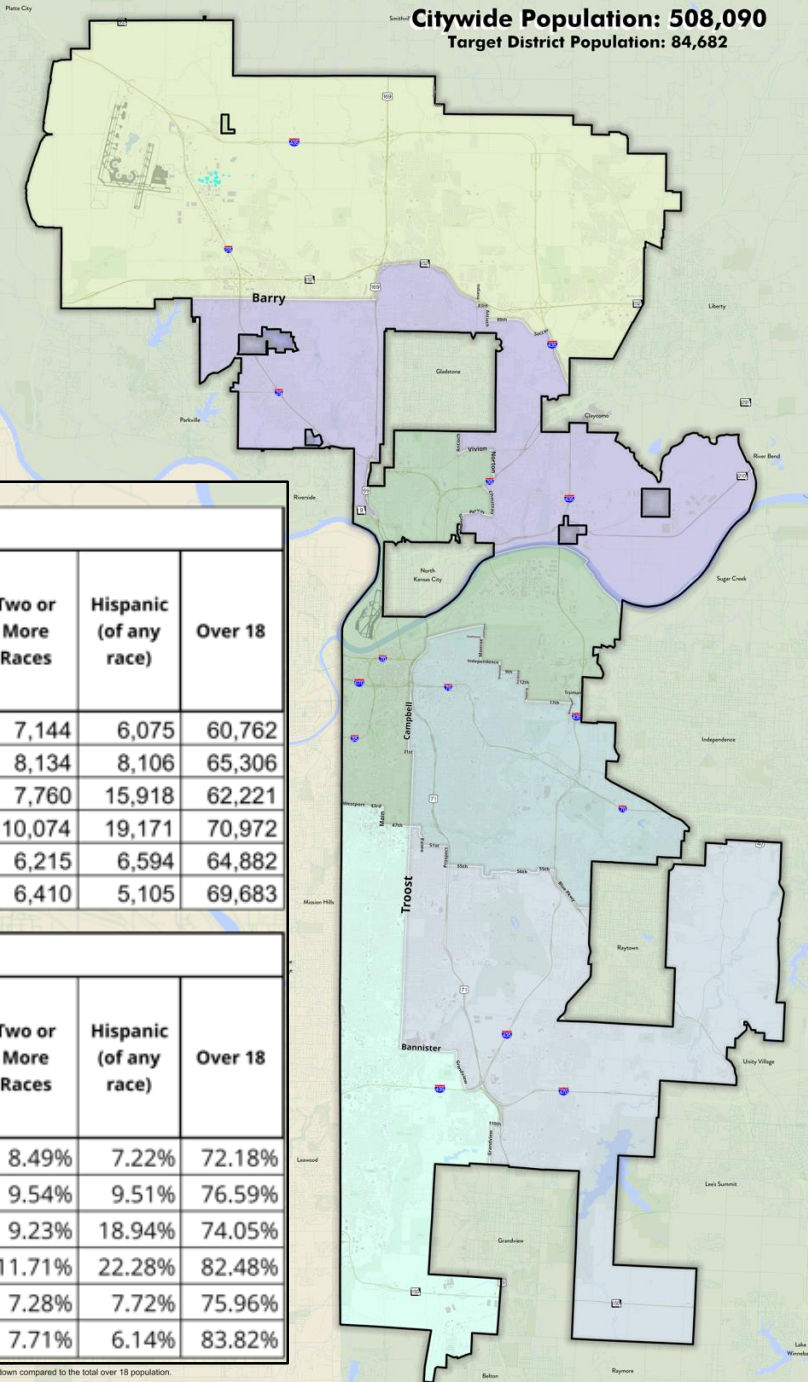
Demographics

Map Explanation

Selected Scenario



Citywide Population: 508,090
Target District Population: 84,682



Population Counts										
District	Total	White	Black or African American	American Indian and Alaska Native	Asian	Native Hawaiian and Other Pacific Islander	Other Races	Two or More Races	Hispanic (of any race)	Over 18
1	84,185	65,268	6,665	360	2,832	220	1,696	7,144	6,075	60,762
2	85,270	60,519	10,046	535	2,803	640	2,593	8,134	8,106	65,306
3	84,031	18,819	45,364	693	1,967	165	9,263	7,760	15,918	62,221
4	86,052	49,600	11,069	779	4,704	307	9,519	10,074	19,171	70,972
5	85,418	25,432	48,381	512	1,339	112	3,427	6,215	6,594	64,882
6	83,134	61,347	11,092	342	2,321	57	1,565	6,410	5,105	69,683

Percentage										
District	Total	White	Black or African American	American Indian and Alaska Native	Asian	Native Hawaiian and Other Pacific Islander	Other Races	Two or More Races	Hispanic (of any race)	Over 18
1	100.00%	77.53%	7.92%	0.43%	3.36%	0.26%	2.01%	8.49%	7.22%	72.18%
2	100.00%	70.97%	11.78%	0.63%	3.29%	0.75%	3.04%	9.54%	9.51%	76.59%
3	100.00%	22.40%	53.98%	0.82%	2.34%	0.20%	11.02%	9.23%	18.94%	74.05%
4	100.00%	57.64%	12.86%	0.91%	5.47%	0.36%	11.06%	11.71%	22.28%	82.48%
5	100.00%	29.77%	56.64%	0.60%	1.57%	0.13%	4.01%	7.28%	7.72%	75.96%
6	100.00%	73.79%	13.34%	0.41%	2.79%	0.07%	1.88%	7.71%	6.14%	83.82%

* The race/ethnicity breakdowns refer to the percentage of that breakdown compared to the total over 18 population.

Recommendation for Charter Review Commission

Pursuant to Sec. 1212 of the City Charter, the Redistricting Commission recommends that the Mayor appoint a Charter Review Commission to study and evaluate increasing the number of Council Districts to provide for greater representation of all Kansas City Residents.