

# Ordinance 230994 Amendment

# Major of MPD Plan

Southeast Corner of Northwest 96th Street and Highway 169

December 6, 2023

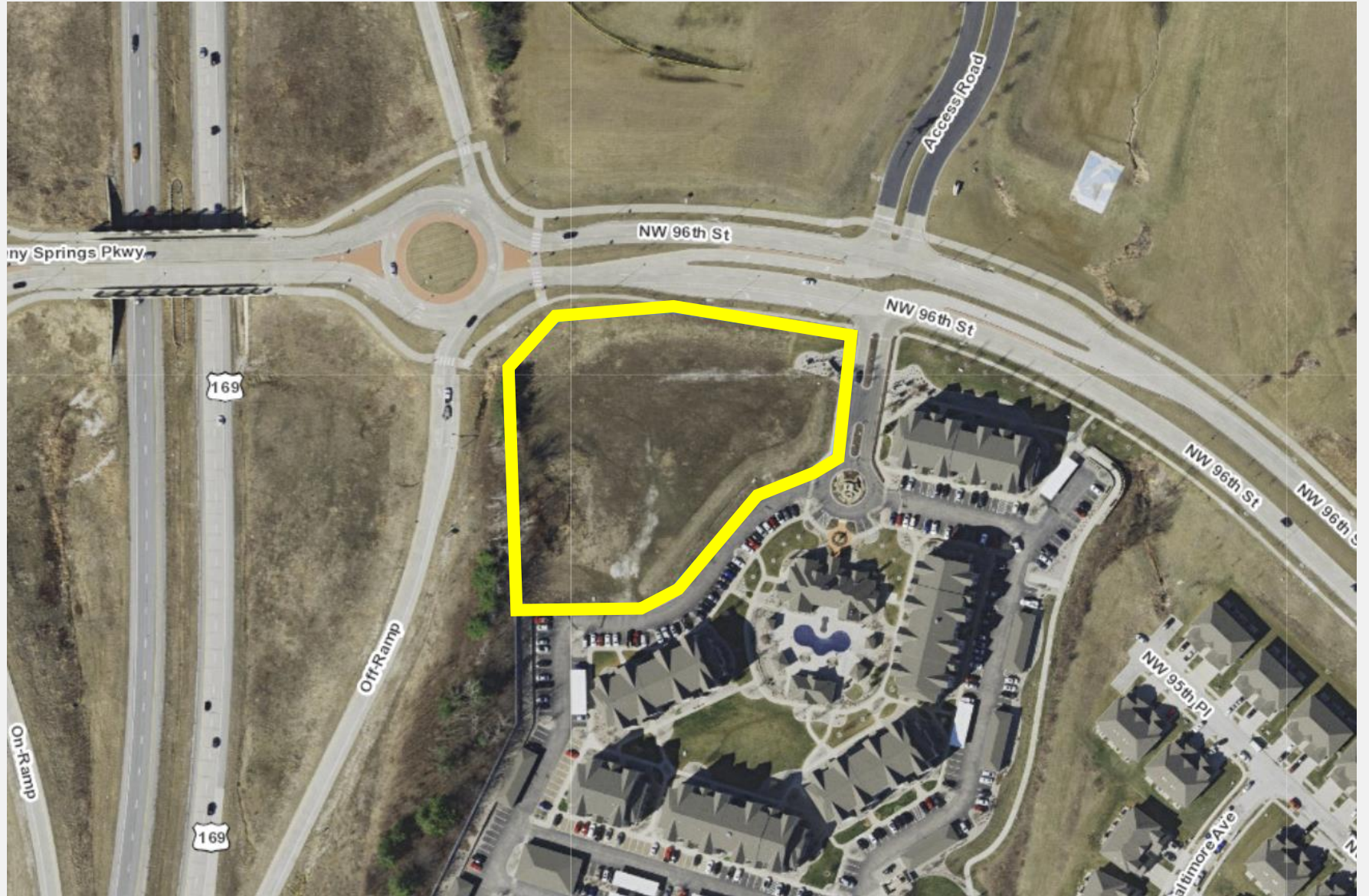
Neighborhood Planning & Development Committee







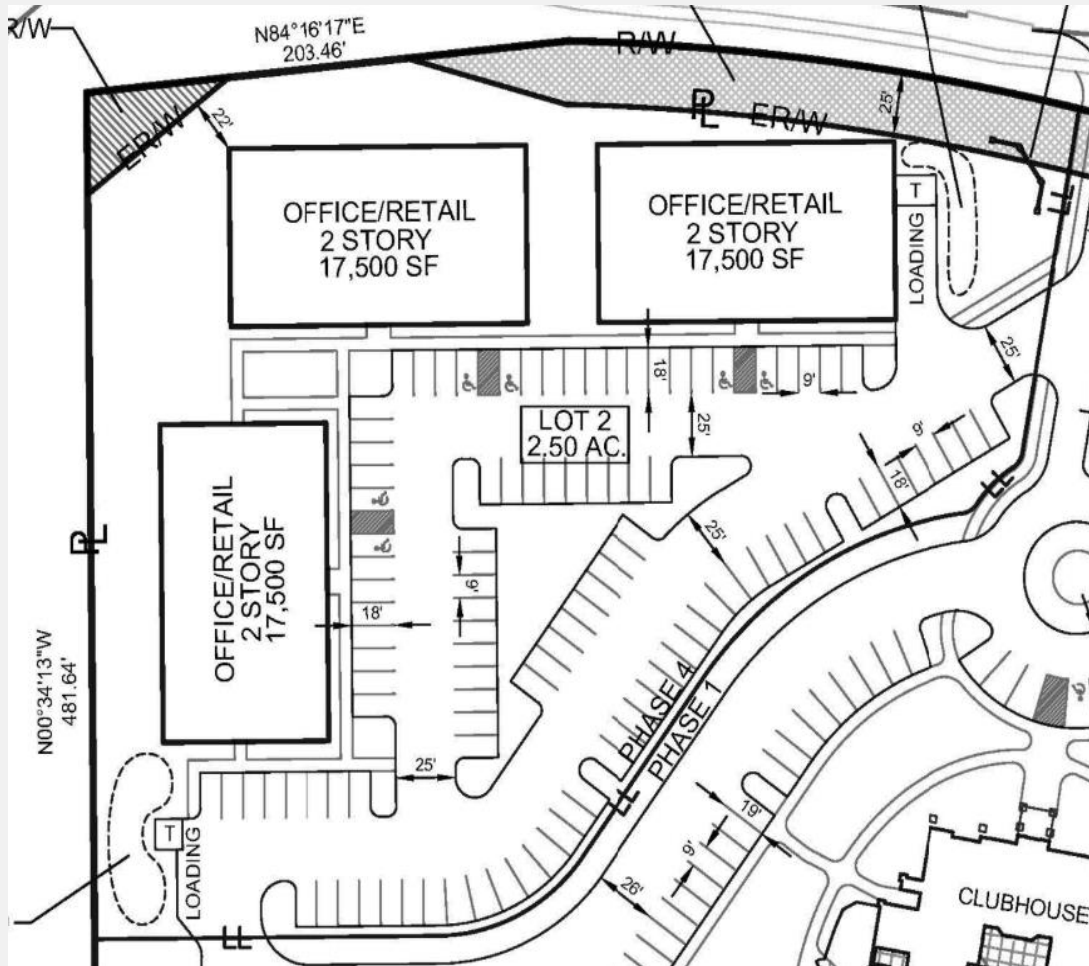
# Location



## Looking South from Northeast 96<sup>th</sup> Street



# Previously Approved Plans



- **Approved March 7, 2013**
- **52,500 SF of Office/Retail Space**
- **3 Buildings**

# Previously Approved Plans



- **Approved December 20, 2018**
- **51 Residential Units**
- **20 Buildings**

# Site Plan

- 56 Residential Townhome Units
- 15 Buildings
- One Lot
- Not For Sale- Single Owner





# Landscape Plan

- Additional trees placed along Northeast 96<sup>th</sup> St.
- Interior open spaces provided with trees and shrubs



# Elevations- 96<sup>th</sup> Street



**STREET SIDE**

**LEFT SIDE**



**BACK (TYP)**

**RIGHT SIDE**

# City Plan Commission Recommendation

**CD-CPC-2023-00146**  
**Conditions**

**Approval with**

**Major Amendment to MPD Plan**