



CD-CPC-2021-00232 & CD-CPC-2022-00006

Location: 1015 Pacific St

Existing Zoning: R-1.5

Proposed Zoning: UR

Existing Land Use: Residential Low Density

Proposed Land Use: Residential Medium-High

Summary: The applicant is seeking approval of a rezoning to UR, with associated development plan and area plan amendment, to allow for townhomes, a duplex, and fourplexes on the subject site.

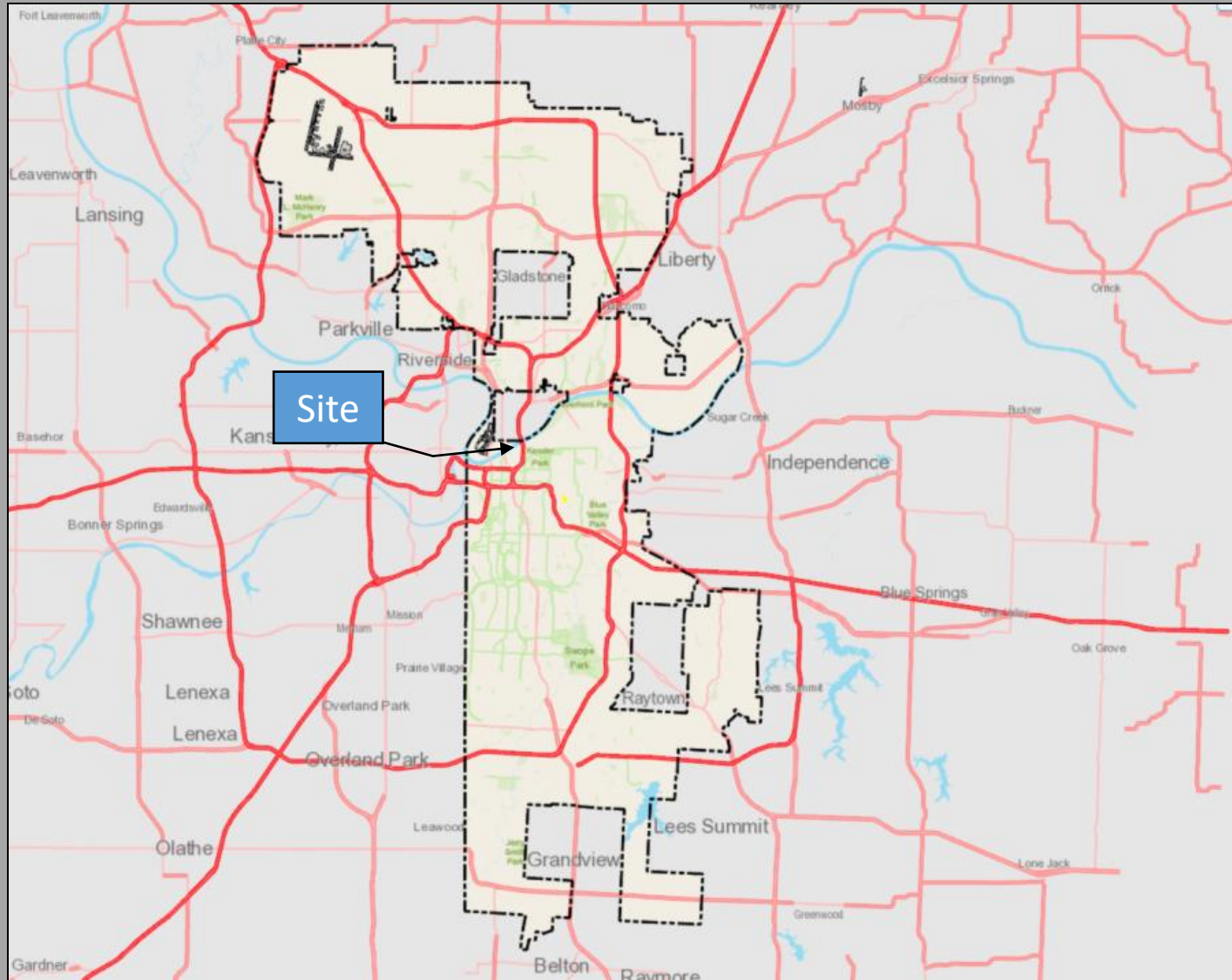
Public Engagement Meeting: Does apply. January 19th, 2022

Prior Cases: None.



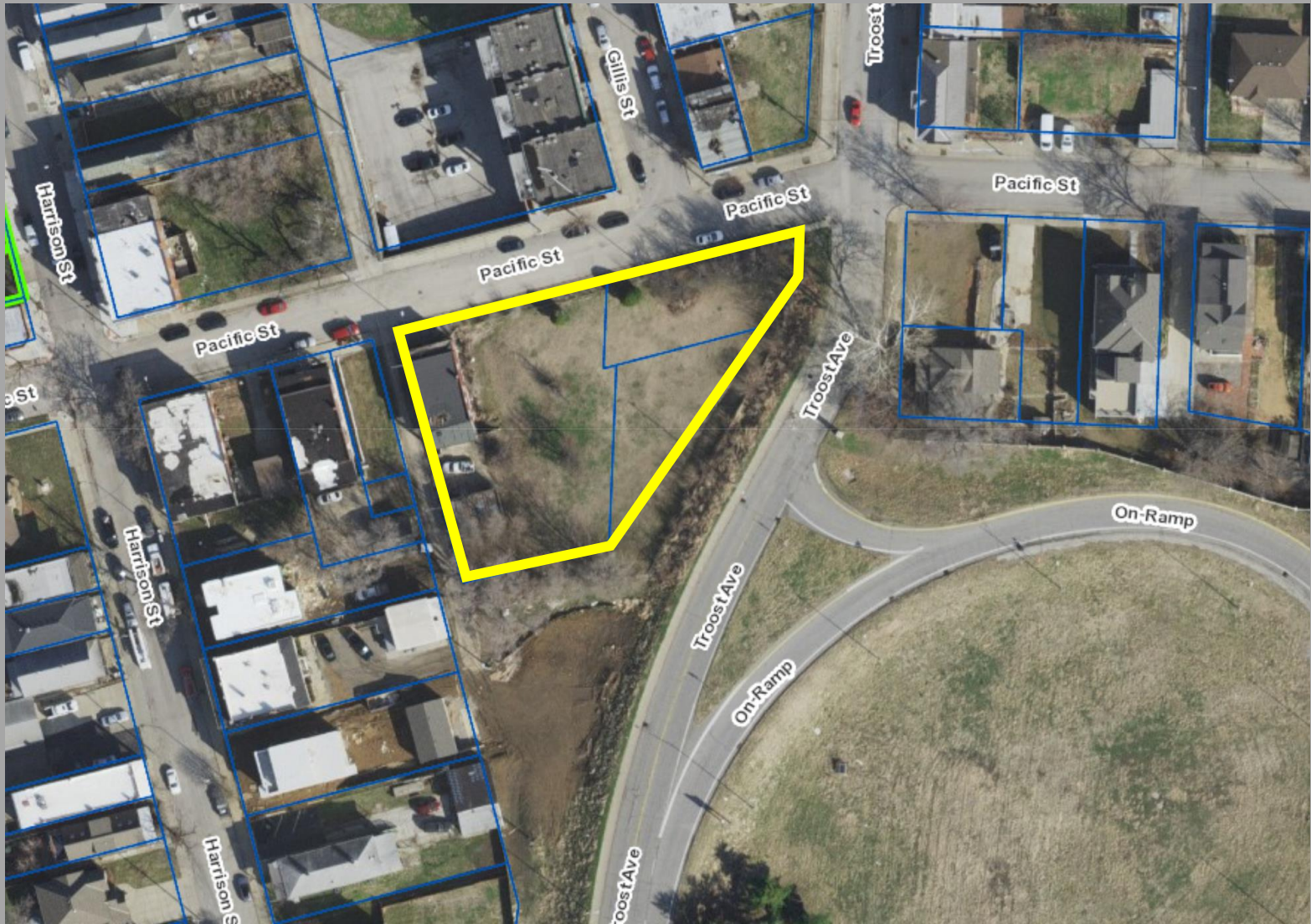


CD-CPC-2021-00232 & CD-CPC-2022-00006



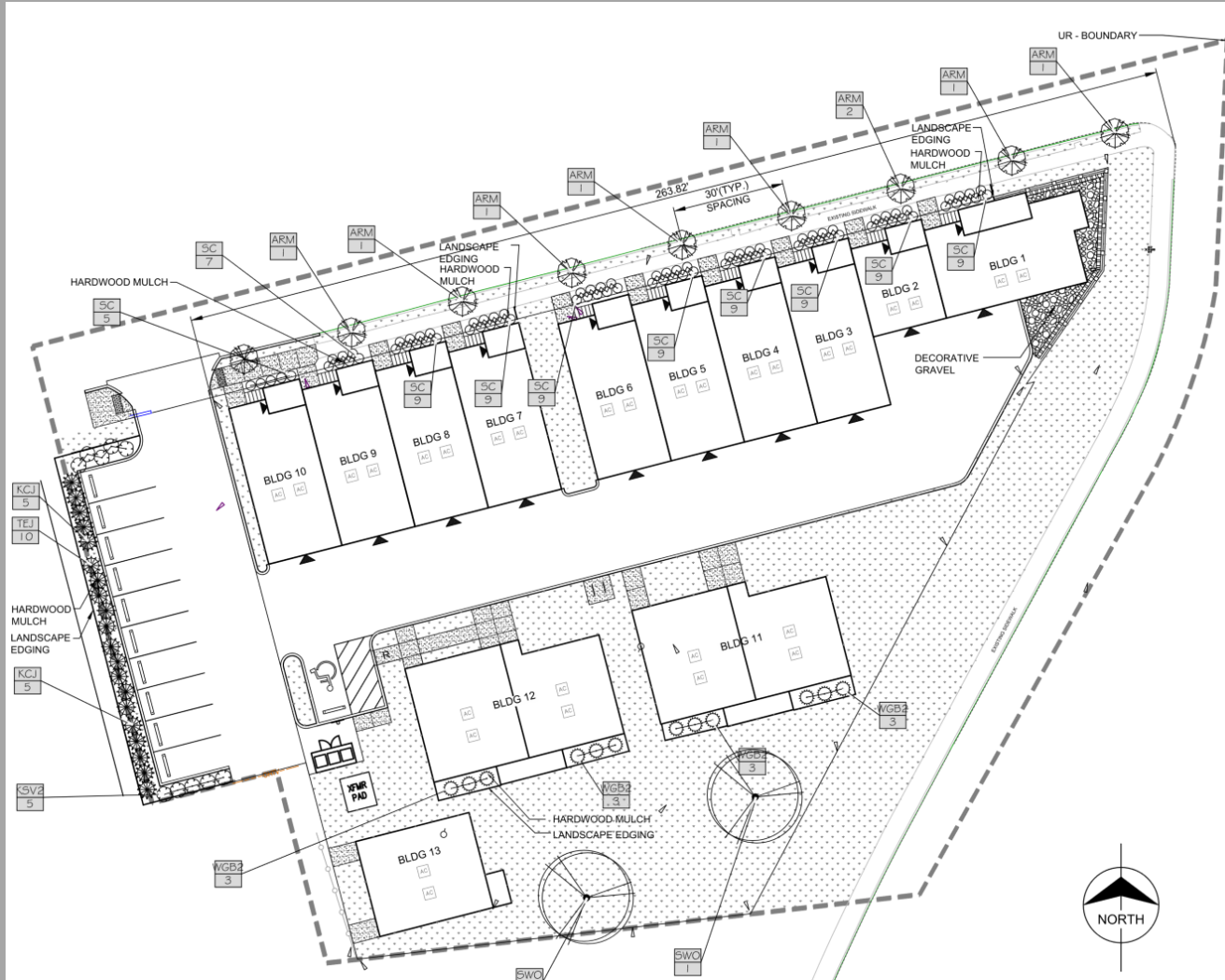


CD-CPC-2021-00232 & CD-CPC-2022-00006





CD-CPC-2021-00232 & CD-CPC-2022-00006





CD-CPC-2021-00232 & CD-CPC-2022-00006

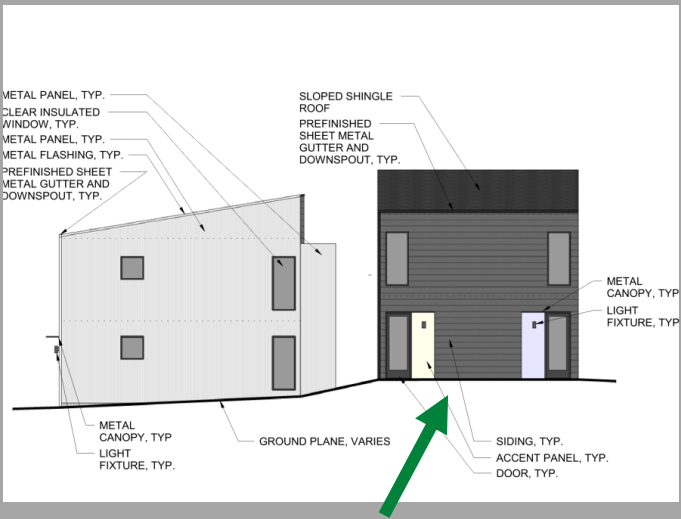


Front façade, looking south
Townhomes

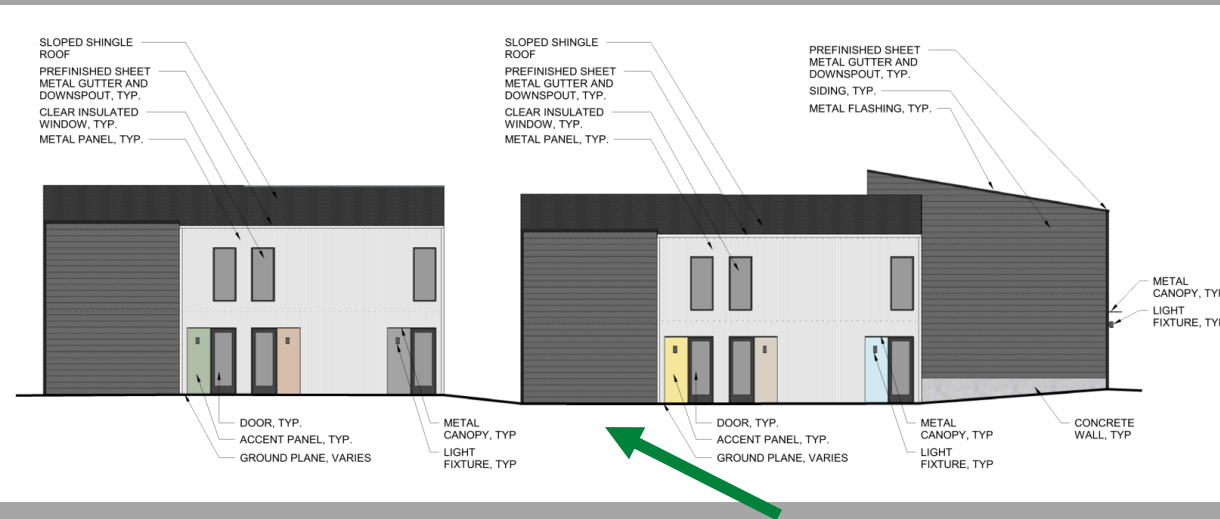




CD-CPC-2021-00232 & CD-CPC-2022-00006



Front façade, looking east
Duplex



Front façade, looking south
Quadplex





CD-CPC-2021-00232 & CD-CPC-2022-00006





CD-CPC-2021-00232 & CD-CPC-2022-00006

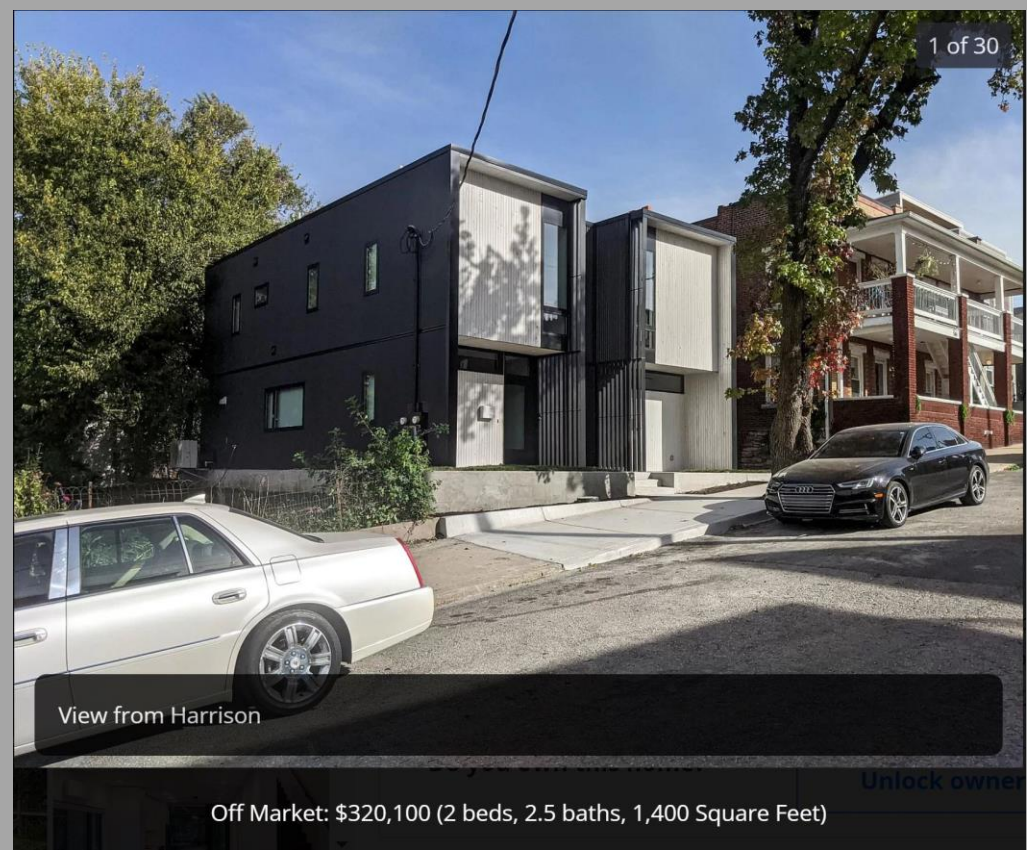


1036 & 1040 E Missouri Ave





CD-CPC-2021-00232 & CD-CPC-2022-00006



555 Harrison St





CD-CPC-2021-00232 & CD-CPC-2022-00006

City Plan Commission Recommendation:

CD-CPC-2022-00006 (Area Plan Amendment)

Approval

CD-CPC-2021-00232 (Development Plan)

Approval, Subject to Conditions

Remove Condition #17

