

Capital Improvements

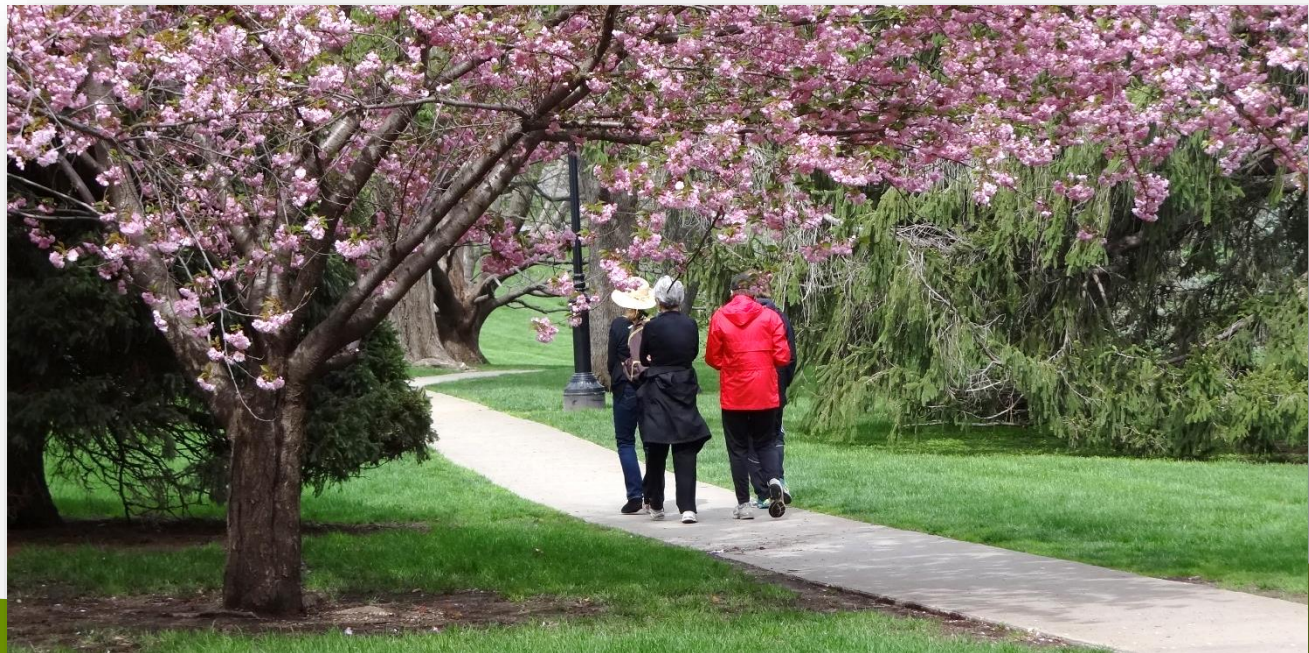


KANSAS CITY
Parks & Recreation



Mission Statement

To improve the quality of life, health and wellness of our community by providing socially equitable, community-driven programming and environmentally sound natural resource management.



Facts & Figures

130 Years Old

48 Fountains

221 Parks

129 Monuments & Sculptures

10,512 Acres of Parkland

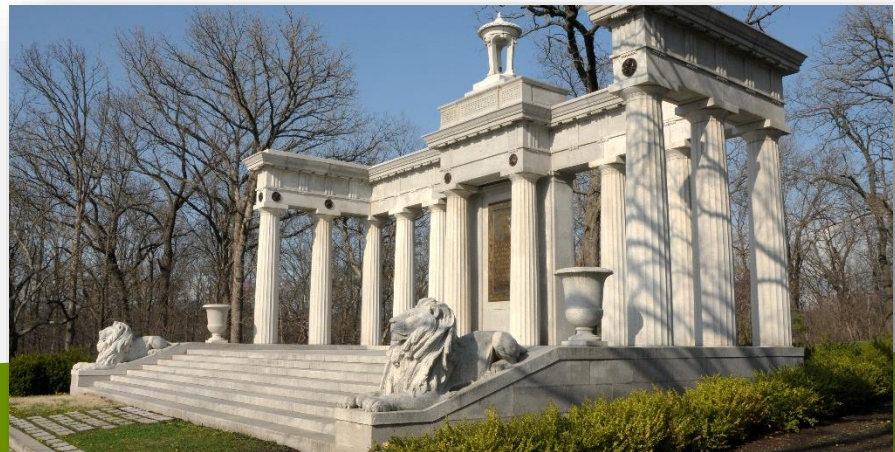
124 Playgrounds

130 Miles of Roads

18 Lakes

194 Miles of Trails

10 Community Centers



More Facts & Figures

25 Aquatic Facilities

5 Disc Golf Courses

126 Baseball Diamonds

48 Flagpoles

19 Football Fields

72 Picnic Shelters

76 Basketball Courts

47 Soccer Fields

95 Tennis Courts

6 Golf Courses



Current Funding Sources

- Public Improvements Advisory Committee (PIAC) Sales Tax
- Parks Sales Tax
- GO Bond Funding
- Grants
- Fees



Completed GO Bond Projects



\$18,000,000

Campus for
Animal Care

Completed GO Bond Projects

\$8,000,000

Kansas City
Museum
Improvements
Phase 1





Completed GO Bond Projects

\$8,500,000

Maplewoods

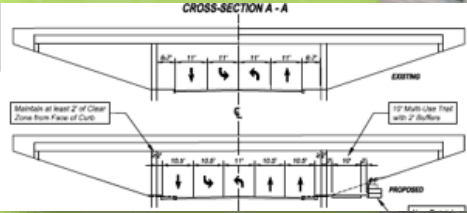
Parkway

Roadway

Improvements

Completed GO Bond Projects

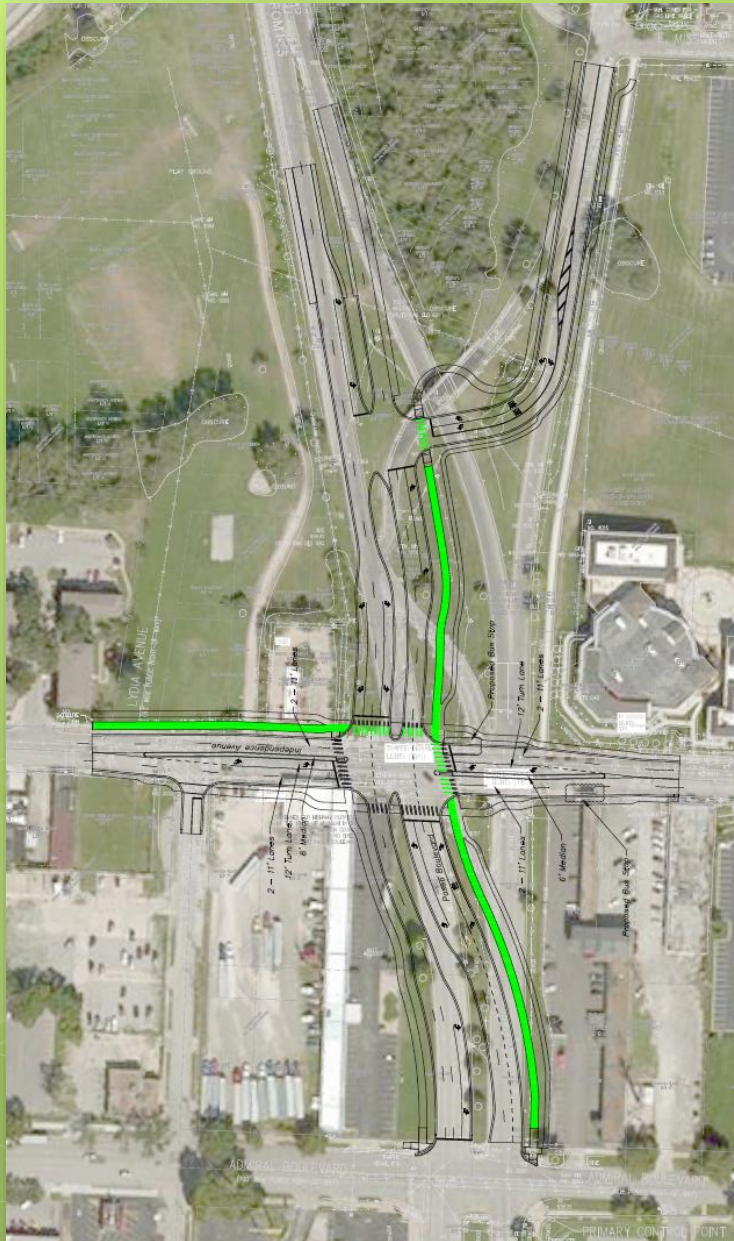
\$1,000,000
Chouteau & I-35
Pedestrian
Improvements



GO Bond Projects in Construction

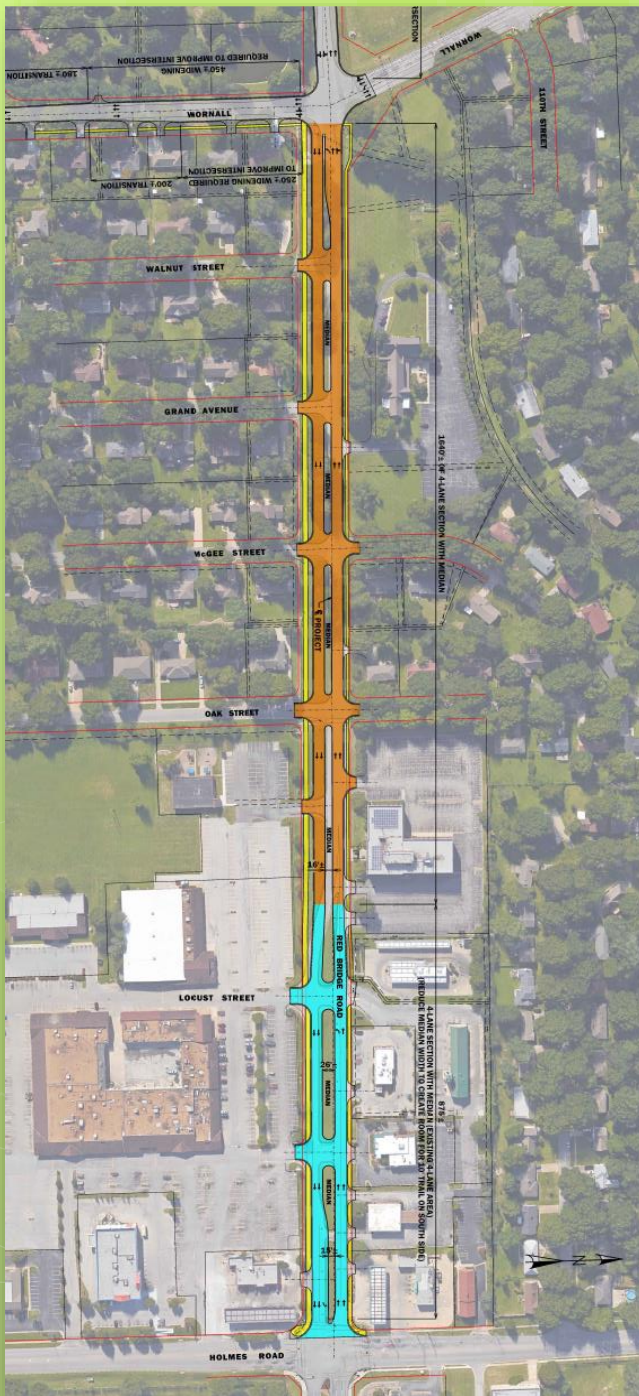
\$7,500,000

The Paseo
Gateway
Project



GO Bond Projects in Construction

\$4,900,000
Red Bridge Road
Improvements



1/2-cent Sales Tax Benefits

Community Center Services

- Increased hours at community centers from an average of 70 to 90 per week
- Implemented a seven-day week operational schedule at 8 of 10 community centers



1/2-cent Sales Tax Benefits

Park Services

- Increased frequency of mowing in Parks and on Boulevards
- Increased playground safety inspections from once per month to once per week
- Increased trash / litter removal and shelter
- Reduced response time for graffiti removal



1/2-cent Sales Tax Benefits

Marketing & Administration Services

- Reinstated the S.H.A.P.E. (Safe Healthy Attractive Parks Environments) Inspection Program to monitor maintenance in parks and community centers
- Implemented #KCPARKS social media strategy (YouTube, Twitter, Instagram and Facebook)



Deferred Maintenance Backlog



- Maintenance Equipment
- Playgrounds
- Trails
- Community Centers
- Pools & Aquatics
- Parks
- Athletic Fields
- Lakes
- Trees & Natural Resources
- Boulevards, Parkways, Park Roads, and Parking Lots

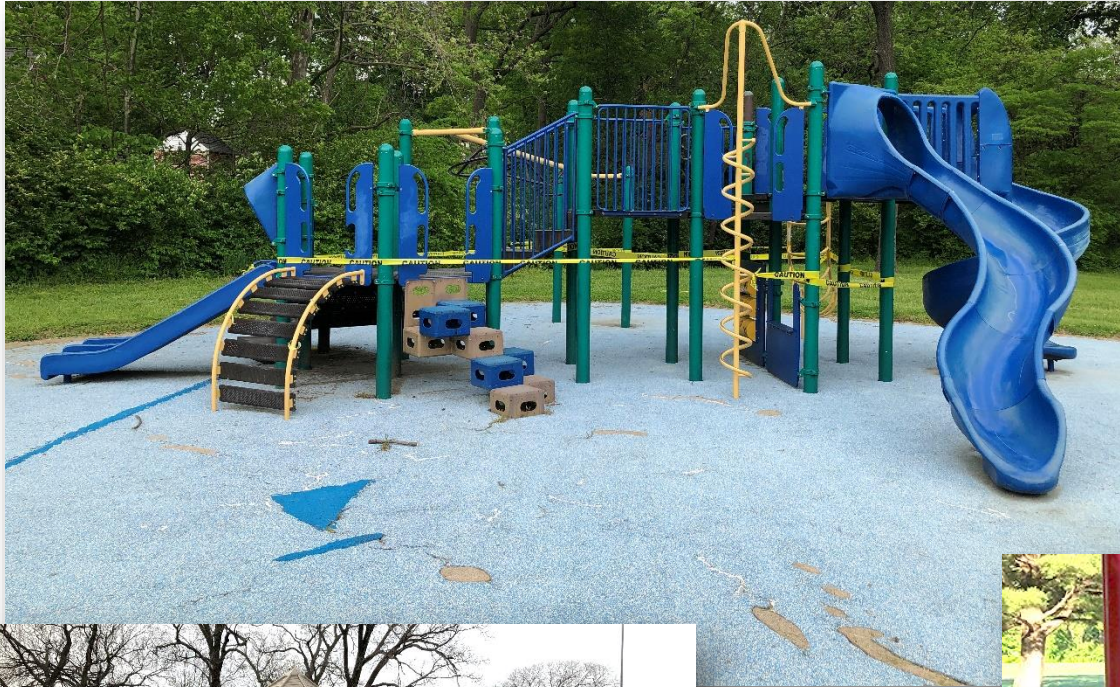
Responsibilities

Maintenance Equipment



Responsibilities

Playgrounds



Responsibilities

Trails



Responsibilities

Community Centers



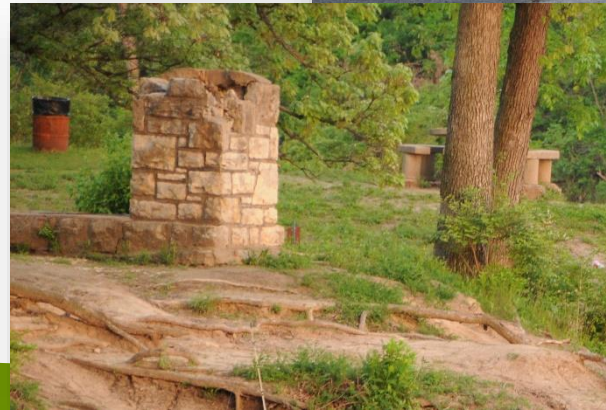
Responsibilities

Pools & Aquatics



Responsibilities

Parks



Responsibilities

Athletic Fields

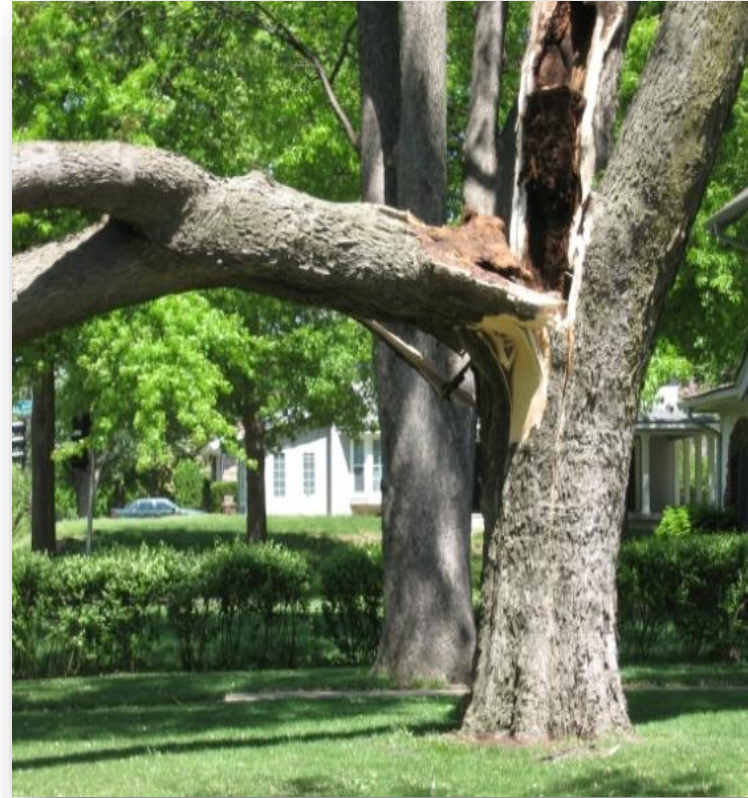


Responsibilities

Lakes



Trees & Natural Resources



Responsibilities

Boulevards, Parkways, Park Roads, and Parking Lots



Capital Funding Request



- Maintenance Equipment
- Playground Upgrades
- Trail Completion
- Community Centers
- Pools & Aquatics
- Parks
- Athletic Fields

Maintenance Equipment

- Lawn Mowers
- Tractors
- Vehicles
- Trailers
- Small Equipment



**\$2,880,000 for
New Equipment**

Playground Upgrades

- Cooley Park
- Golden Oaks
- Chouteau Greenway Park
- Barry Road Park
- Romey Hills Park
- Fox Hill Park
- Ashland Park
- Prospect Plaza Park
- Winner Park
- Waterworks Park
- Southmoreland Park
- Penn Valley Park
- Dunn Park
- Swope Park #5
- Noble Park
- Minor Park
- Iser Park
- Warford Park



**\$3,600,000 across
18 Playgrounds**

Trail Completion

- Cleaver II Trail from Chelsea to Van Brunt



Building missing link
4,300 linear feet
(0.8 mile) of trail

**\$1,500,000 for
0.8 Mile of Trail**

Community Centers Deferred Maintenance Completion

- Tony Aguirre
- Brush Creek
- Garrison
- Hillcrest
- KC North
- Line Creek
- Marlborough
- Southeast
- Westport Roanoke
- Gregg/Klice



**\$15,000,000 across
10 Facilities**

Pools & Aquatics Updates

- Arbor Villa Park Sprayground
- Jarboe Park Sprayground
- The Grove Park Sprayground
- Budd Park Sprayground
- Garrison Park Sprayground
- Water Slides (3 Locations)



**\$5,000,000 across
8 Locations**

Parks: Swope Park

- Camp Lake of the Woods Shelter & Restroom



Repurpose old
Lakeside Nature
Center location

**\$1,250,000 for
Facility Improvements**

Parks: Restrooms

- Concourse Park
- Englewood Park
- Little Blue Valley Park
- Waterworks Park
- Ashland Park
- Chouteau Greenway Park
- Minor Park
- Spring Valley Park
- Frank Vaydik Park (Baseball Field)
- Westwood Park
- Tiffany Hills Park



**\$3,000,000 across
12 Facilities**

Parks: Shelters

- Concourse Park
- Englewood Park
- Little Blue Valley Park
- Waterworks Park
- Ashland Park
- Chouteau Greenway Park
- Minor Park
- Spring Valley Park
- Frank Vaydik Park (Baseball Field)
- Westwood Park
- Tiffany Hills Park



**\$3,000,000 across
12 Shelters**

Athletic Fields: Tennis Courts

- Dr. Martin Luther King Jr. Park - 4 Courts
- Sheila Kemper Dietrich Park - 2 Courts
- Minor Park - 6 Courts
- Kansas City North Community Center - 2 Courts
- Sunnyside Park - 3 Courts



**\$2,500,000 across
10 Tennis Courts**

Athletic Fields: Futsal Courts

- Dr. Martin Luther King Jr. Park - 1 Court
- 9th and Van Brunt - 1 Court
- Gage Park - 1 Court
- Penn Valley Park - 1 Court
- Sheffield Park - 1 Court
- 5 Other Locations To Be Determined



**\$2,270,000 across
10 Futsal Courts**

Thank you!



KANSAS CITY
Parks & Recreation

