

KANSAS CITY MISSOURI

Ordinance No. 260269

Front Street Detention Facility

March 24, 2026

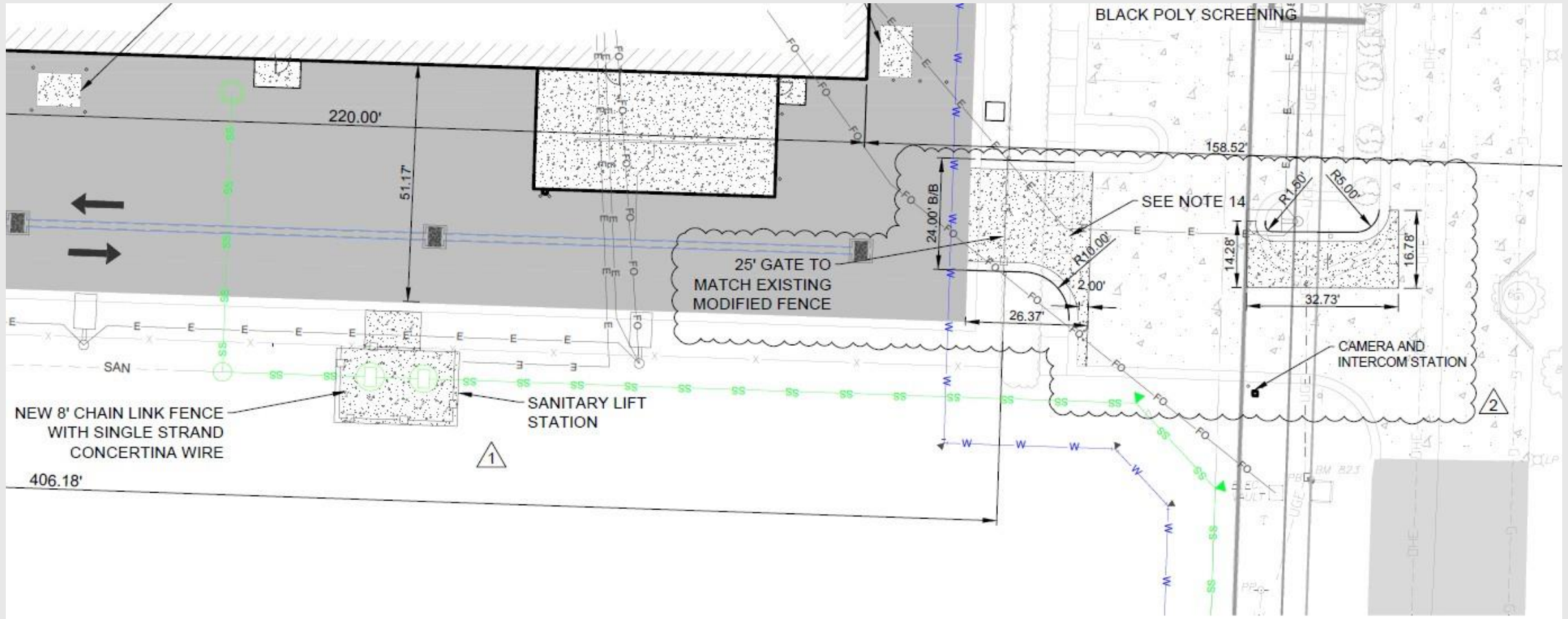
Finance, Governance and Public Safety Committee



Ordinance Overview

- Authorizes \$1,370,381.00 for additional site improvements for the Front St Detention Facility
- Improvements include
 - Sanitary Sewer Service Lift Station and Connection
 - Water Service and Fire Service Connections
 - Storm Sewer System
 - Ramps and Stairs for Visitor, Employee and Recreation Yard Access
 - Fencing and Bollards
 - Lighting
 - Asphalt Paving

Entrance Layout and Sanitary Sewer Lift Station



Sewer and Water Service



Engineered Products

Technical Data

LGF05-Series - 60 Hz

Optional heavy-duty quick-connect cords

Terminal block for internal wiring

Rotor shaft grounding brush protects bearings during VFD operation (5-phase models)

Heavy-duty Class 30 cast iron motor housing

Protective powder coat finish

Press fit stator enhances heat transfer allowing for cooler motor temperatures

Lower bearing double row angular contact ball bearing

Buna-N O-rings seal all joints

MidTherm™ Cooling allows oil to be cooled by pumped media

440 stainless steel cutter plate spiraled for solids clearing, hardened to 58RC

440 stainless steel rotary cutter hardened to 58RC



Stainless steel lifting bale - sized for ease of use

Standard quick-connect cords

All hardware 316 stainless steel

Upper deep groove ball bearing

Oil-filled motor chamber cools motor and lubricates bearings

Inverter duty rated Class H insulation

NEMA® IE3 premium efficiency motor construction

One-piece 416 stainless steel rotor shaft

Stator locking pin prevents stator movement

Bearing locking ring eliminates axial shaft movement

Upper (inner) seal - carbon graphite sintered on silicon carbide with Viton® elastomers and stainless steel components

Seal leak detection, 2-probe sensor with resistor

Lower (outer) seal - dense silicon carbide on graphite impregnated silicon with Viton® elastomers and stainless steel components

4" 150# ANSI (DIN 100-PN10) flange

Stainless steel impeller

NEW!

WadBuster™ Technology disbursts material and helps reduce wadding on the cutter head, improving flow and cutting performance



Patent/Patents Pending. See www.LibertyPumps.com/LEP/patents

CUSTOMER APPROVAL

NAME (PRINT): _____

NAME (SIGN): _____

DATE: _____

FINAL CONFIGURATIONS MAY VARY SLIGHTLY FROM THE ILLUSTRATIONS ON THIS PRINT.

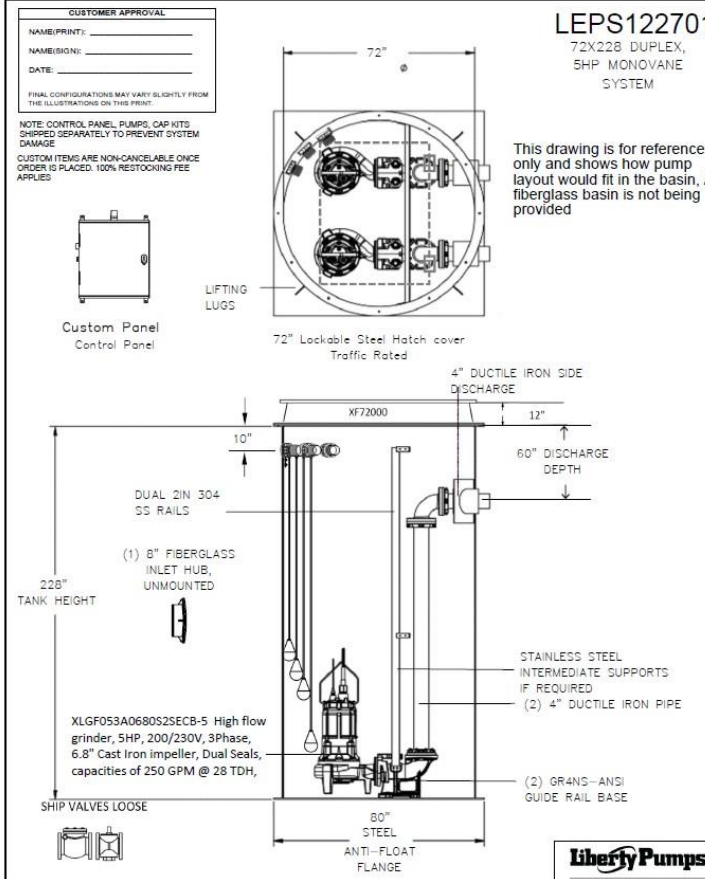
NOTE: CONTROL PANEL, PUMPS, CAP KITS SHIPPED SEPARATELY TO PREVENT SYSTEM DAMAGE

CUSTOM ITEMS ARE NON-CANCELABLE ONCE ORDER IS PLACED. 100% RESTOCKING FEE APPLIES

LEPS122701

72X228 DUPLEX,
5HP MONOVANE
SYSTEM

This drawing is for reference only and shows how pump layout would fit in the basin. A fiberglass basin is not being provided



NOTE: CONTROL PANEL, PUMPS, CAP KITS SHIPPED SEPARATELY TO PREVENT SYSTEM DAMAGE

CUSTOM ITEMS ARE NON-CANCELABLE ONCE ORDER IS PLACED. 100% RESTOCKING FEE APPLIES

PROPRIETARY AND CONFIDENTIAL: THE INFORMATION CONTAINED IN THIS DRAWING IS THE SOLE PROPERTY OF LIBERTY PUMPS. ANY REPRODUCTION IN PART OR AS A WHOLE WITHOUT THE WRITTEN PERMISSION OF LIBERTY PUMPS IS PROHIBITED.

NOTE: LIFTER CHAINS AVAILABLE UPON REQUEST. FIBERGLASS TANK DIMENSION TOLERANCE +/- 1"

DATE: February 18, 2026

DRAWN: J. COLE



18-February-2026 10:39 AM

Asphalt and Entrance Ramps



Question s?