



**KANSAS CITY
MISSOURI**

Ordinance #250602

Authorizing Amendment No. 3 to a design professional services agreement with WSP, Inc. in the amount of \$695,794.23 for Grand Boulevard Bridge Bike/Pedestrian Accommodations project for a total contract amount of \$1,797,249.16; and recognizing this ordinance as having an accelerated effective date.



Ordinance #250603

Approving the recommendations of Arterial Street Impact Fee District G Committee; appropriating \$575,000.00 from the Unappropriated Fund Balance of the Arterial Street Impact Fee Fund to Holmes Road - 137th Street to Blue Ridge Boulevard Project in the Arterial Street Impact Fee Fund; and recognizing this ordinance as having an accelerated effective date.



Ordinance #250603 Holmes Road Project

Scope

- Holmes Road – 135th to Blue Ridge
- Add sidewalks, curb and gutter
- Add 10-ft shared-use path
- Rebuild roadway
- New lighting
- New intersection at Blue Ridge
- Quiet Zone RR Crossing improvements

Funding

\$10M Construction Budget total
GO Bond

- FY25 \$1M
- FY26 \$4M
- FY27 \$5M

PIAC funded design \$900k

**Need funding for ROW
acquisition \$575k – Arterial
Impact Fee**

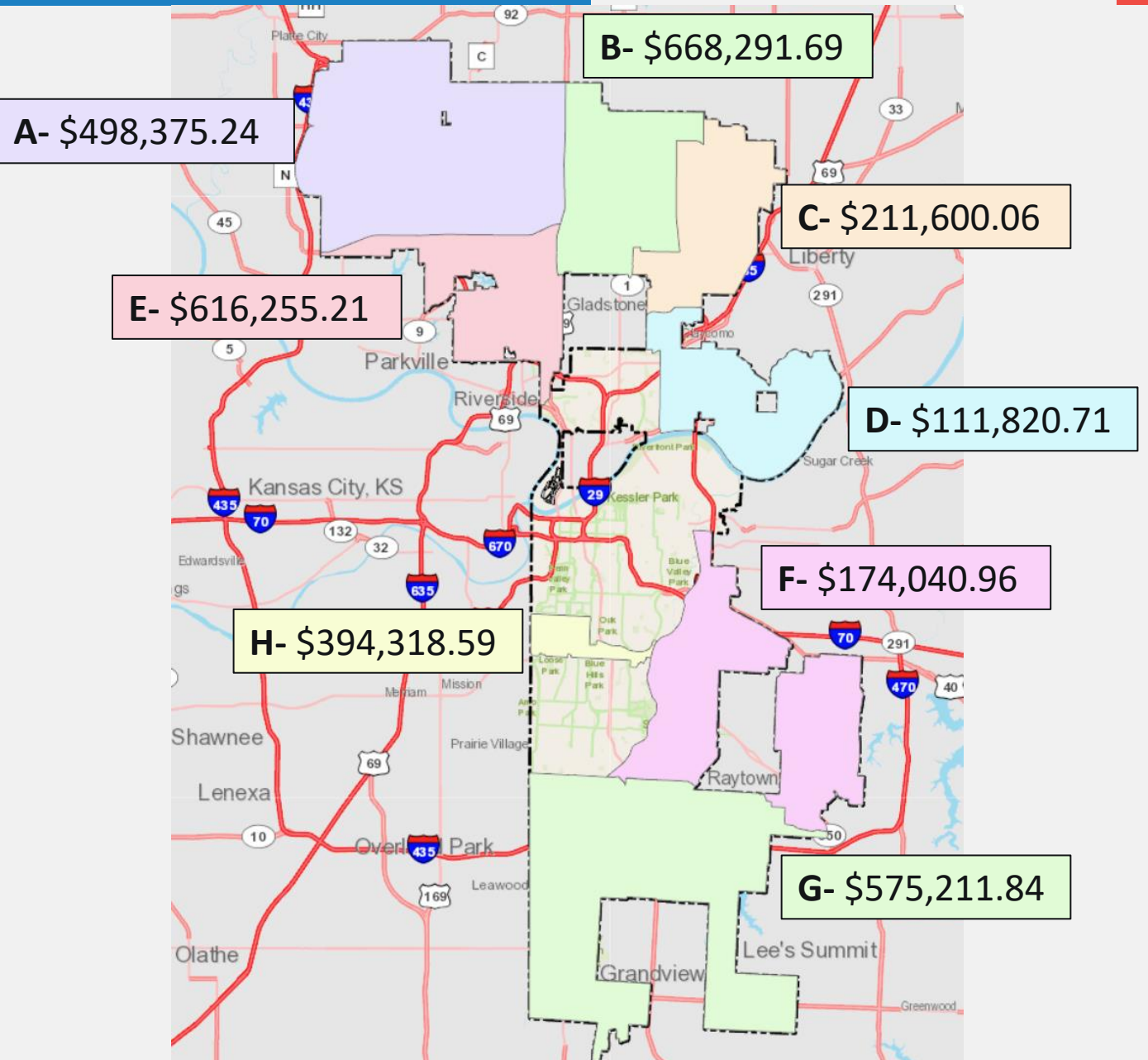
Impact Fee Districts

Calculation of funds available by Impact
Fee District as of 2/28/2025

- A-** Airport Development Impact Fee
- B-** North Oak Development Impact Fee
- C-** Shoal Creek Development Impact Fee
- D-** Birmingham Develop. Impact Fee
- E-** Line Creek Development Impact Fee
- F-** East Development Impact Fee
- G-** South Development Impact Fee
- H-** Plaza Development Impact Fee

Public Works

5



Ordinance #250604

Authorizing the Director of Public Works to execute Amendment No. 1 to the 2025-26 Cooperative Agreement with Bike Share KC in the amount of \$166,040.00 for a total contract amount of \$581,000.00.



Ordinance 250604

Bike Share Service Contract Amendment

7/29/25

Transportation, Infrastructure, and Operations Committee

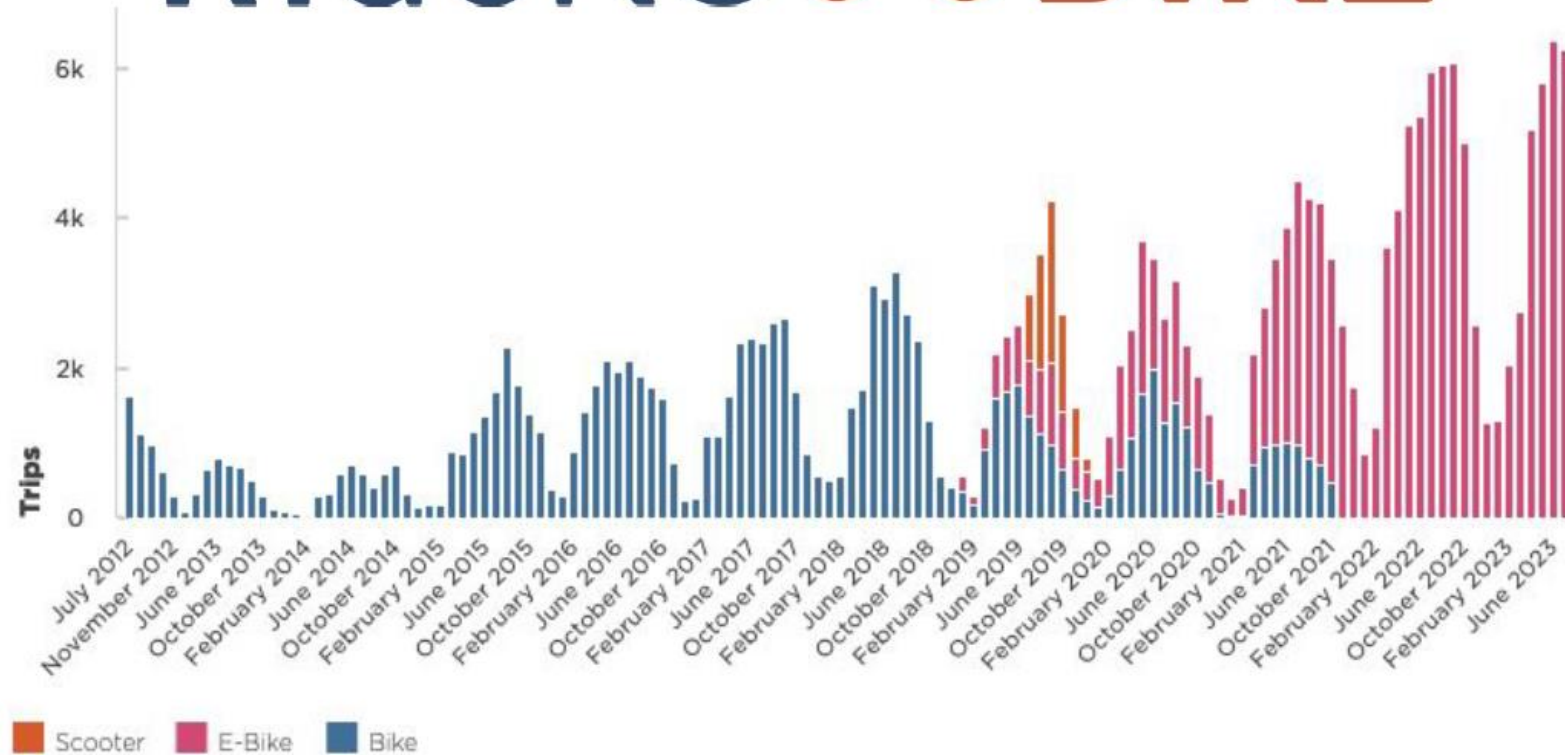


Ordinance Details

- Current contract: \$414,960
 - Allows for Operation and Maintenance of 247 existing bikes
- Total contract amount with amendment: \$166,040.00
 - Match funds for TAP Grant (purchase 81 new bikes)
 - Match funds for Carbon Reduction Program grant (80 new bike batteries)
 - O&M for 6 months for 81 new bikes



RideKC BIKE

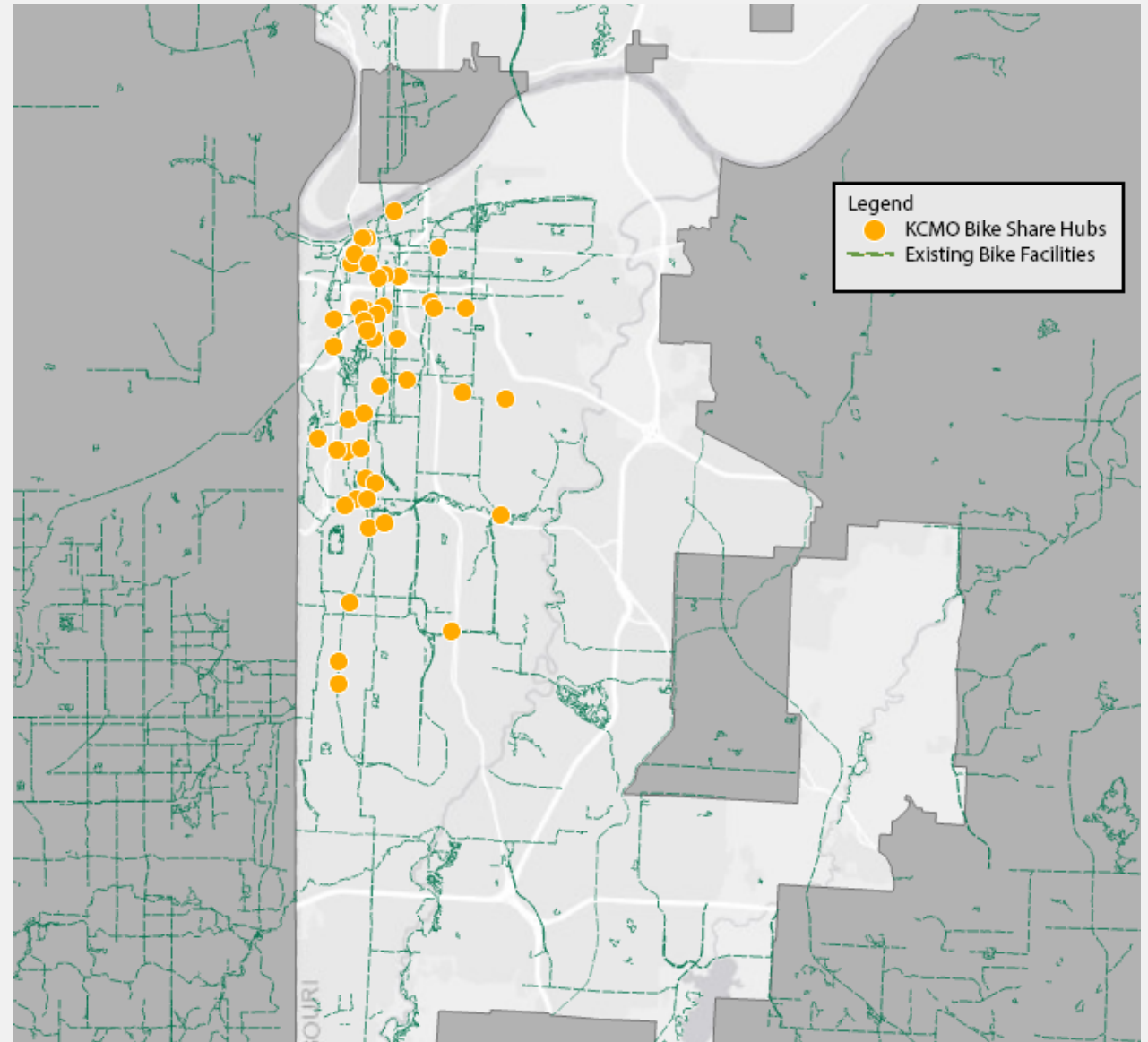


Bike Share Equity

- Bike Share for All Program
 - \$10 Annual Memberships for low-income individuals (regularly \$149)
- Partner Organizations
 - Hope Faith Assistance Campus
 - Healing House KC
 - Westside Housing Org
 - Jerusalem Farm
 - Midtown KC Now
 - Rosedale Development Association

Hubs and Service Area Map

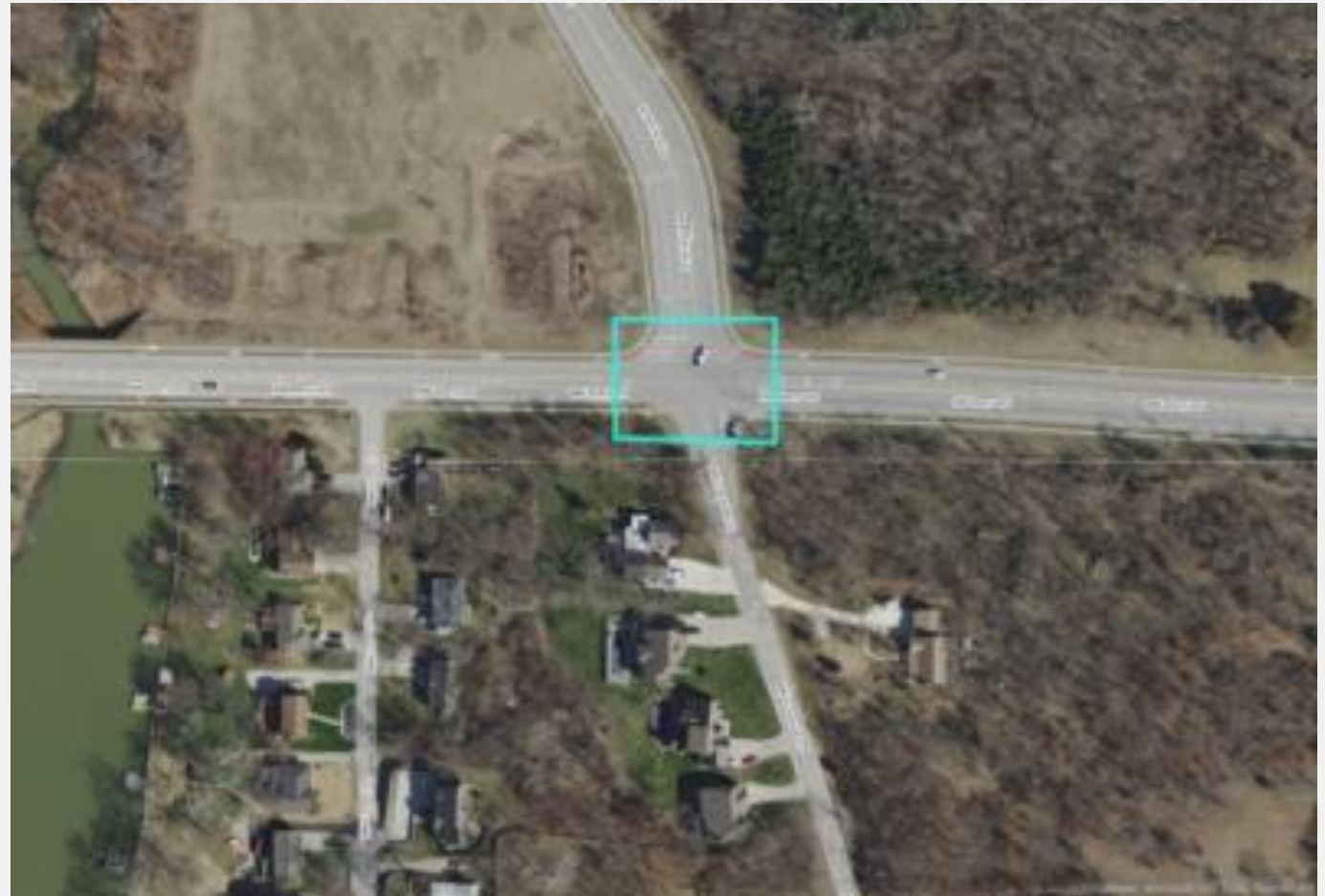
District	Existing Hubs
CD 1	NA
CD 2	NA
CD 3	8
CD 4	28
CD 5	1
CD 6	8
Total	45



Questions & Discussion

Ordinance #250607

Approving the recommendations of Arterial Street Impact Fee District E Committee; appropriating \$600,000.00 from the Unappropriated Fund Balance of the Arterial Street Impact Fee District E - Line Creek Fund to Northwest Barry Road & North Amity Avenue - Traffic Signal Project; and recognizing this ordinance as having an accelerated effective date.



Ordinance #250607

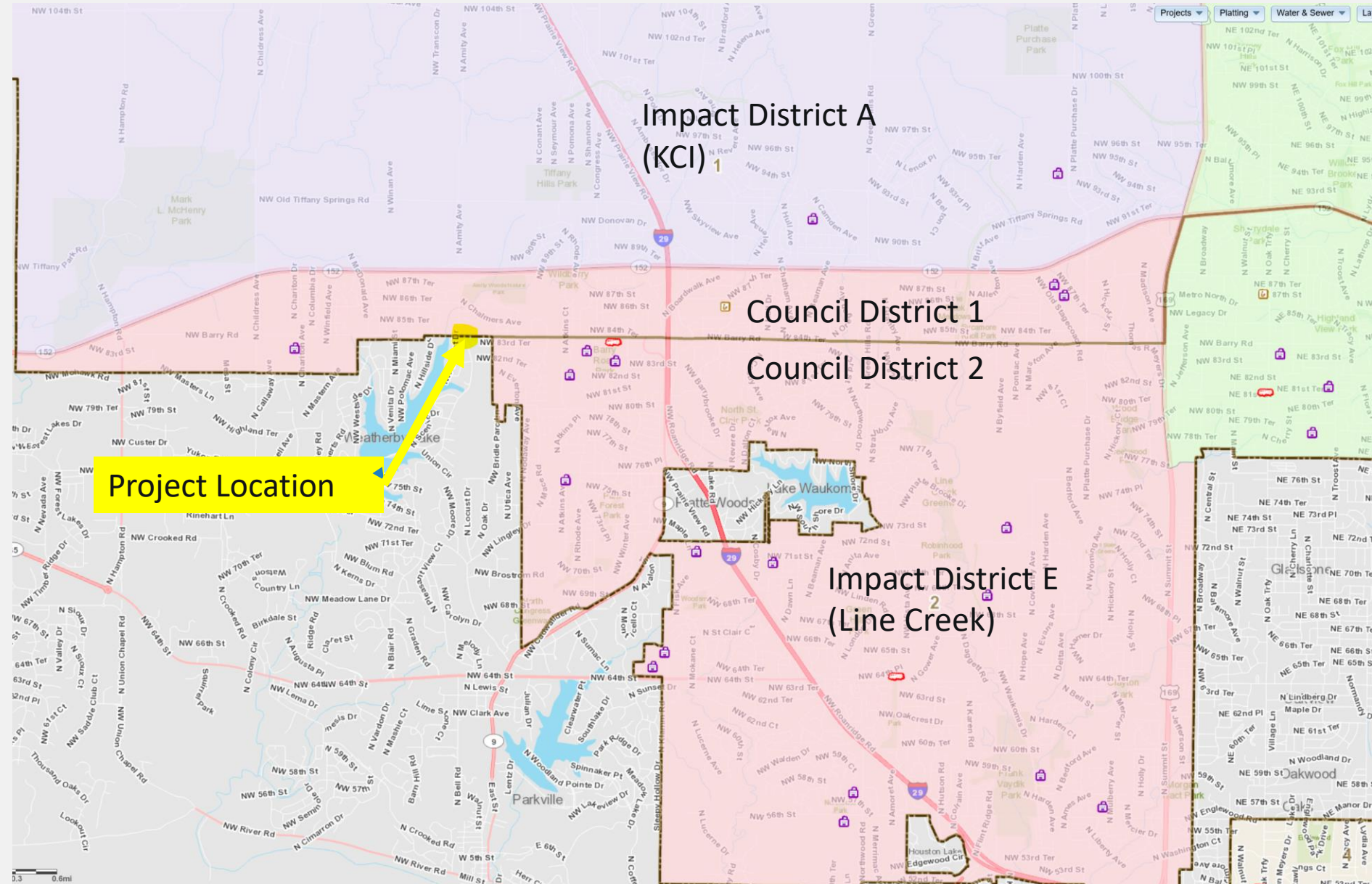
- Unsignalized intersection of Amity and Barry Road
- Signal became warranted in 2022
- Southern half of intersection is in Weatherby Lake
- History of crashes at location.
- Total Construction Bid Cost: \$835,635
- Sources: Arterial Impact Fee \$600,000
- Pending Cooperative Agreements:
 - Weatherby Lake Contribution - \$100,000
 - Platte County – to be discussed



Impact Fee Districts

Arterial Impact Fee Districts do not match Council District Boundaries

Identified as an issue to rectify by updating city code section 39.



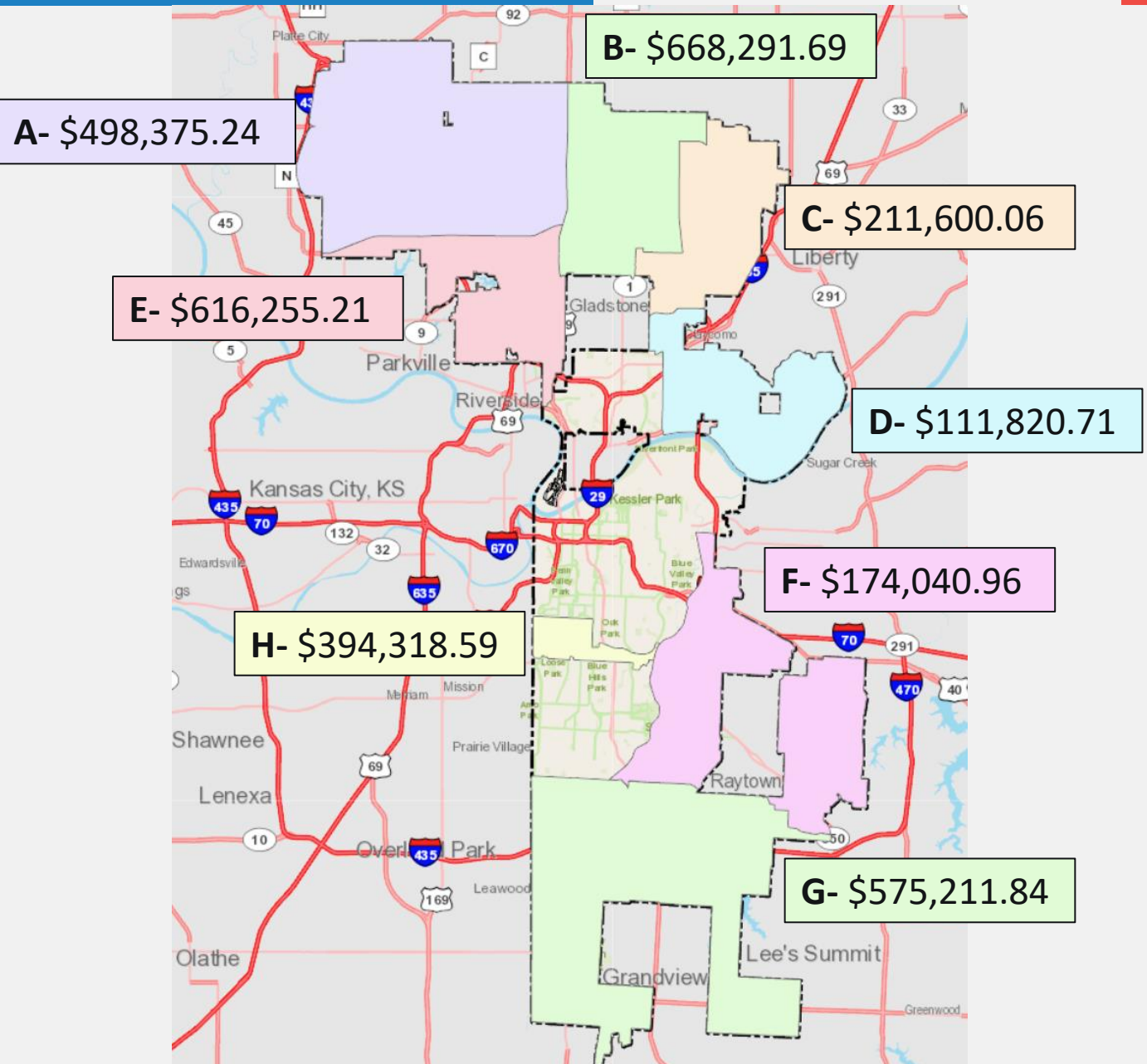
Impact Fee Districts

Calculation of funds available by Impact
Fee District as of 2/28/2025

- A-** Airport Development Impact Fee
- B-** North Oak Development Impact Fee
- C-** Shoal Creek Development Impact Fee
- D-** Birmingham Develop. Impact Fee
- E-** Line Creek Development Impact Fee
- F-** East Development Impact Fee
- G-** South Development Impact Fee
- H-** Plaza Development Impact Fee

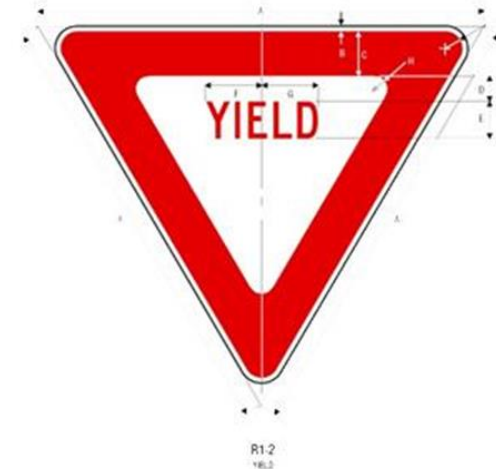
Public Works

18



Ordinance #250608

Approving various Traffic Regulations in compliance with Chapter 70 of the Code of Ordinances.



A	B	C	D	E	F	G	H	J
18	3/16	2	1	1 1/2	2 3/8	2 3/8	2 3/8	1 1/2
24	3/16	3	1 1/2	2 1/2	3 1/2	3 1/2	3 1/2	1 1/2
30	3/16	4	1 1/2	2 1/2	3 1/2	3 1/2	3 1/2	1 1/2
36	3/16	5	2	3	4 1/8	4 1/8	4 1/8	2
48	1	6	2 1/2	4	6 1/4	6 1/4	6 1/4	2
60	1 1/2	8	3 1/2	5	8 1/4	8 1/4	8 1/4	4

COLORS: LEGEND: -- RED (RETROREFL) -- WHITE (RETROREFL)
BACKGROUND: WHITE (RETROREFL)

1-2



COLORS: LEGEND: -- RED (RETROREFL) -- WHITE (RETROREFL) -- GREEN (RETROREFL) -- BLUE (RETROREFL)
BACKGROUND: WHITE (RETROREFL)

04/14/06

1-92

**Reduce spacing 50%
**See page 6-31
***See page 6-2 for arrow design