

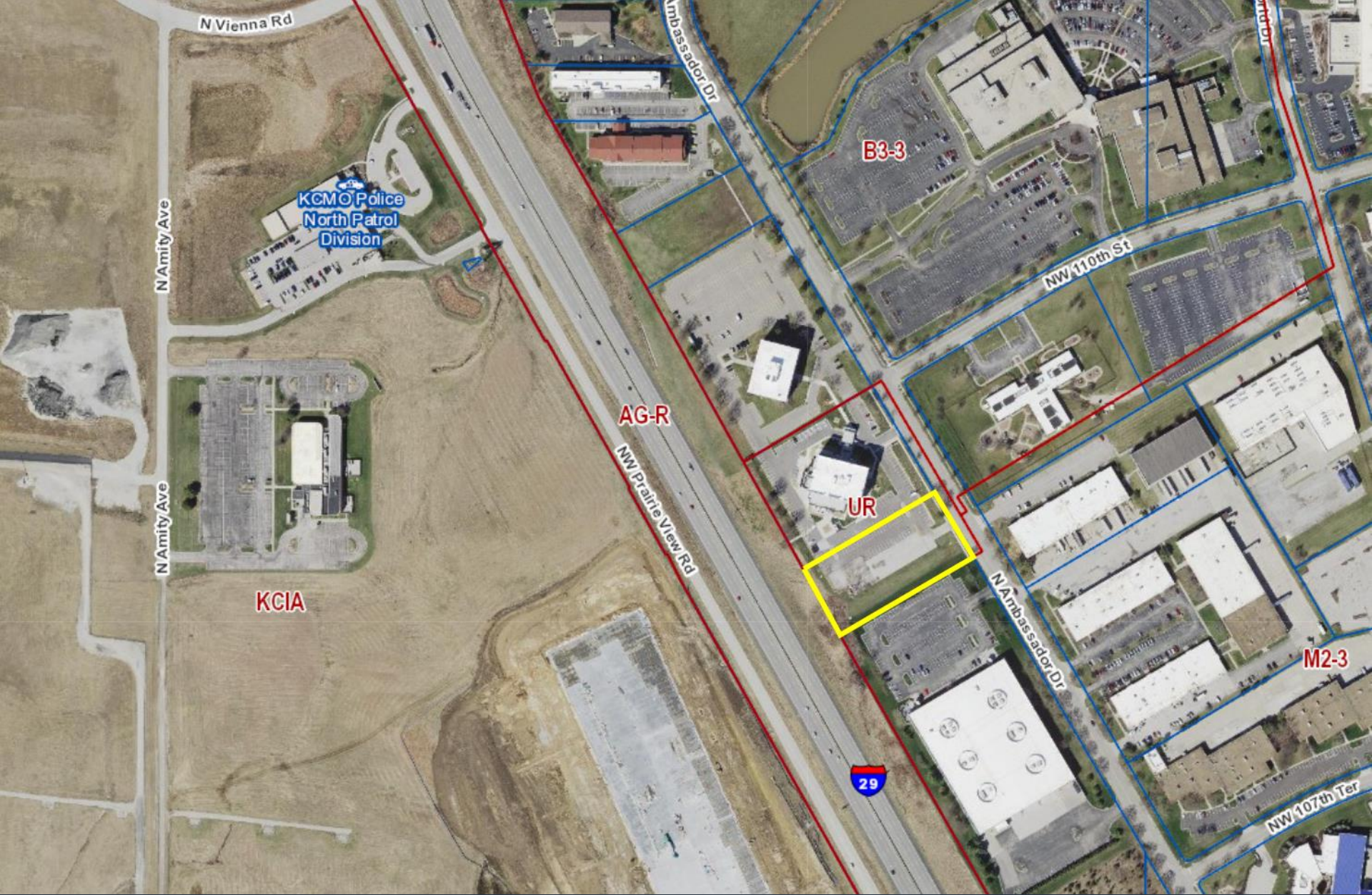
220268

Docket # 14 – Tru by Hilton

Case No. CD-CPC-2022-00005

10900 N Ambassador Dr – Rezoning to UR (Major Amendment)





Case No. CD-CPC-2022-0005



View looking east from I-29

 Case No. CD-CPC-2022-00005



View looking north from N. Ambassador Dr.

 Case No. CD-CPC-2022-00005

N29°29'06"W
203.95'

N59°51'33"E
404.04'

S59°28'56"W
407.80'

60.0' RW

52.7' B/B

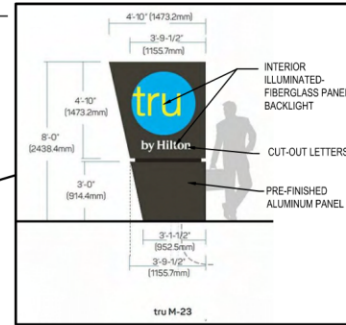
S30°32'46"E
201.26'

MONUMENT SIGN
10' SIGN SETBACK

10.0'

10.0'

121.1'



PROPOSED TRU HOTEL
MONUMENT SIGN

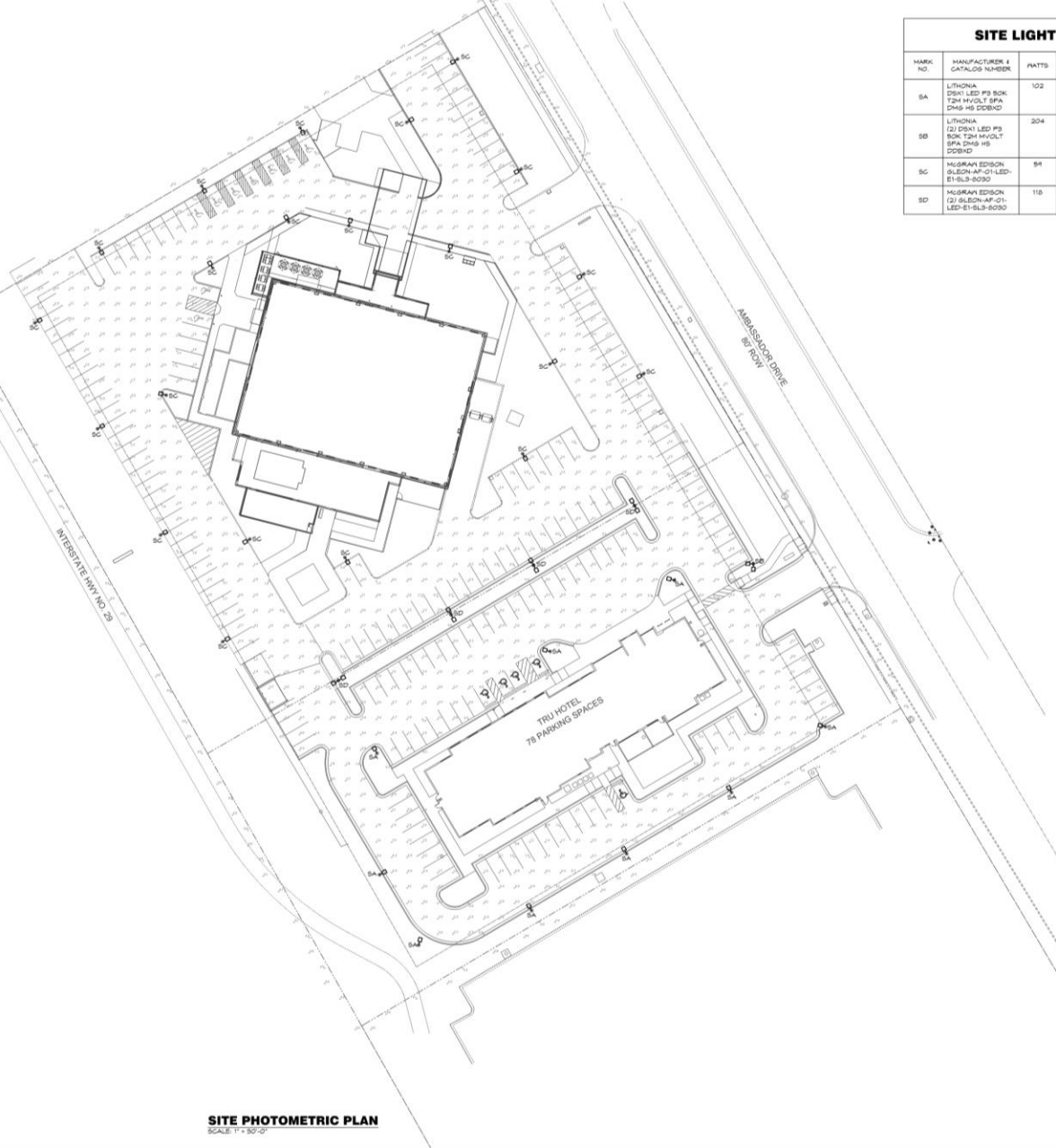


1 SIGNAGE PLAN- MONUMENT SIGN
SCALE 1" = 20'-0"

1" = 20'
0 10' 20'

SITE LIGHT

MARK NO.	MANUFACTURER & CATALOG NUMBER	QTY
SA	LITHONIA DSN1 LED P3 BCK T24 HVOLT 8FA DM48 H5 DDBND	102
SB	LITHONIA D2 DSN1 LED P3 BCK T24 HVOLT 8FA DM48 H5 DDBND	204
SC	MUSGRAVE EDISON SILICON AF 01 LED E1-SL3-8030	84
SD	MUSGRAVE EDISON D2 SILICON AF 01 LED-E1-SL3-8030	116



SITE PHOTOMETRIC PLAN
SCALE: 1"=50'-0"



1 VIEW FROM AMBASSADOR ROAD
SCALE 1:14



2 VIEW FROM I-29
SCALE 1:14



2 VIEW FROM I-29 w/ EXISTING HILTON GARDEN INN HOTEL IN BACKGROUND
SCALE 1:14



Case No. CD-CPC-2022-00005

CPC Recommendations:

Approval with Conditions