

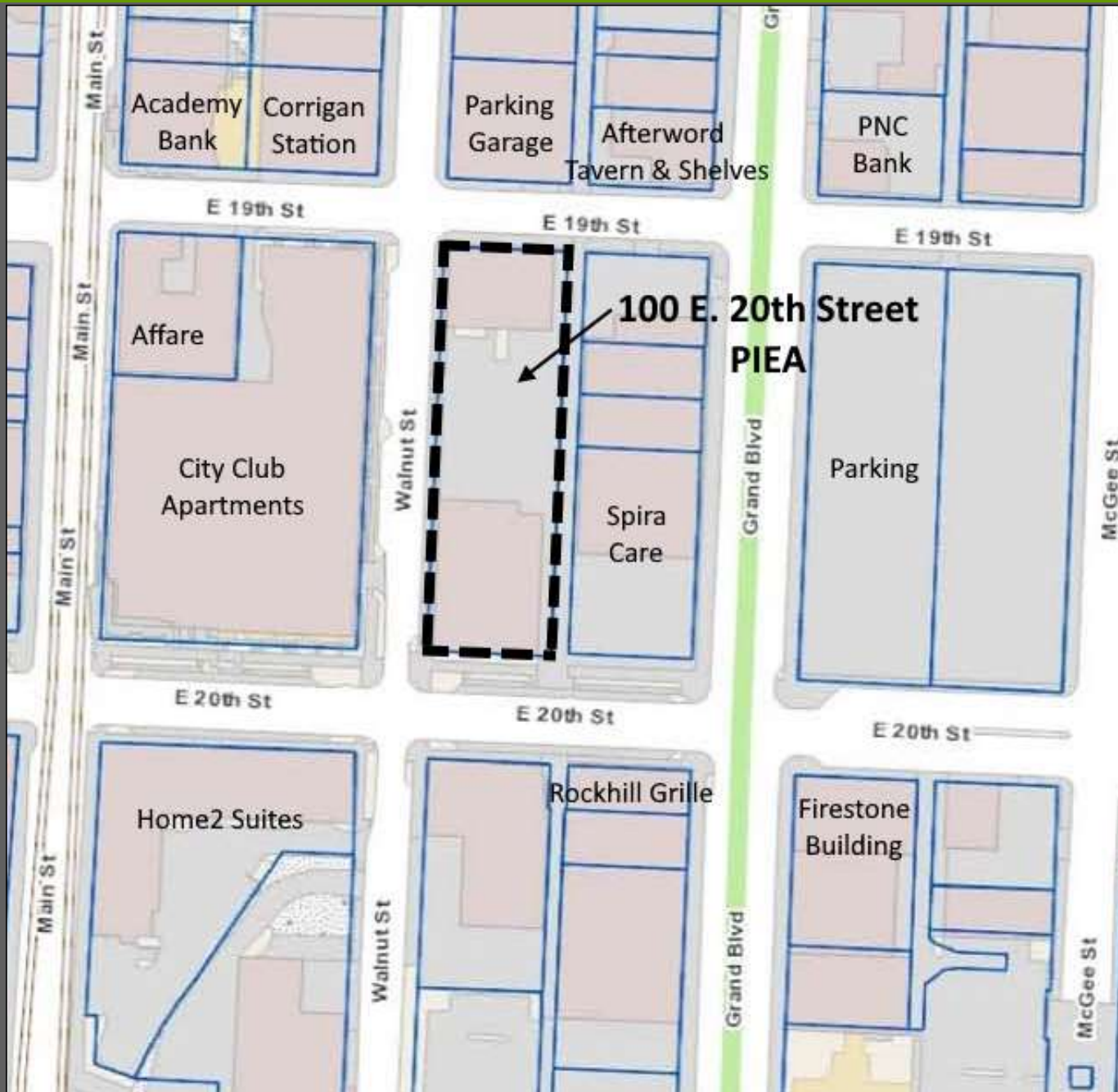
sterrett urban, llc
704 canter st
raymore, mo 64083
patrick sterrett

100 E. 20th Street PIEA

Neighborhood Planning and Development Committee

January 10, 2024

100 E. 20th Street PIEA – General Development Plan



Boundaries

100 E. 20th Street PIEA – General Development Plan

Planning Area

- Location:
 - NEC of 20th Street, Walnut Street
- Planning Area Size:
 - 1.04 acres
 - 1 parcel
 - 1 owner – SAFRANDA MO, LLC

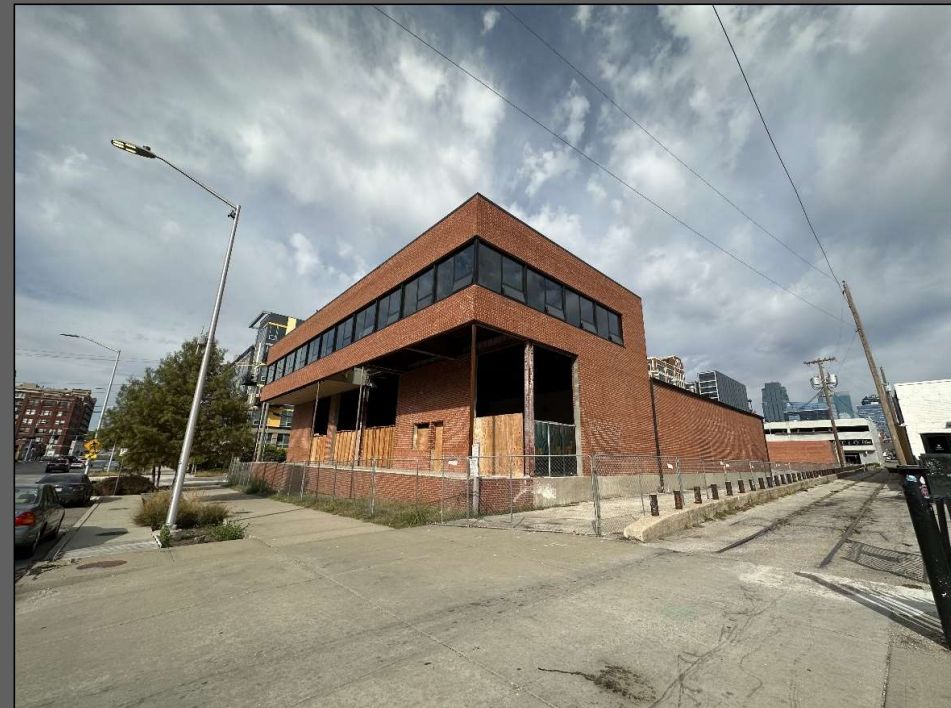
Purchased August 2021

Property under contract to Plan Proponent

100 E. 20th Street PIEA – General Development Plan

Existing Conditions

- Existing improvements constructed 1950s
- Two buildings
 - 100 E. 20th Street
 - Two stories / 21,365 sf
 - 1905 Walnut Street
 - One story / 7,567 sf
- Previous Use: Anheuser-Busch Distributorship
- Vacancy - 100%



Existing Conditions

100 E. 20th Street PIEA – General Development Plan

Plan Requirements

- Satisfy Greater Downtown Area Plan / Spirit of KC Playbook Guidelines
- Land Use: Downtown Mixed Use (no change anticipated)
- Design Guidelines
- Rezoning: DX-15 to UR
- Ten year timeframe for completion

Anticipated PIEA Assistance

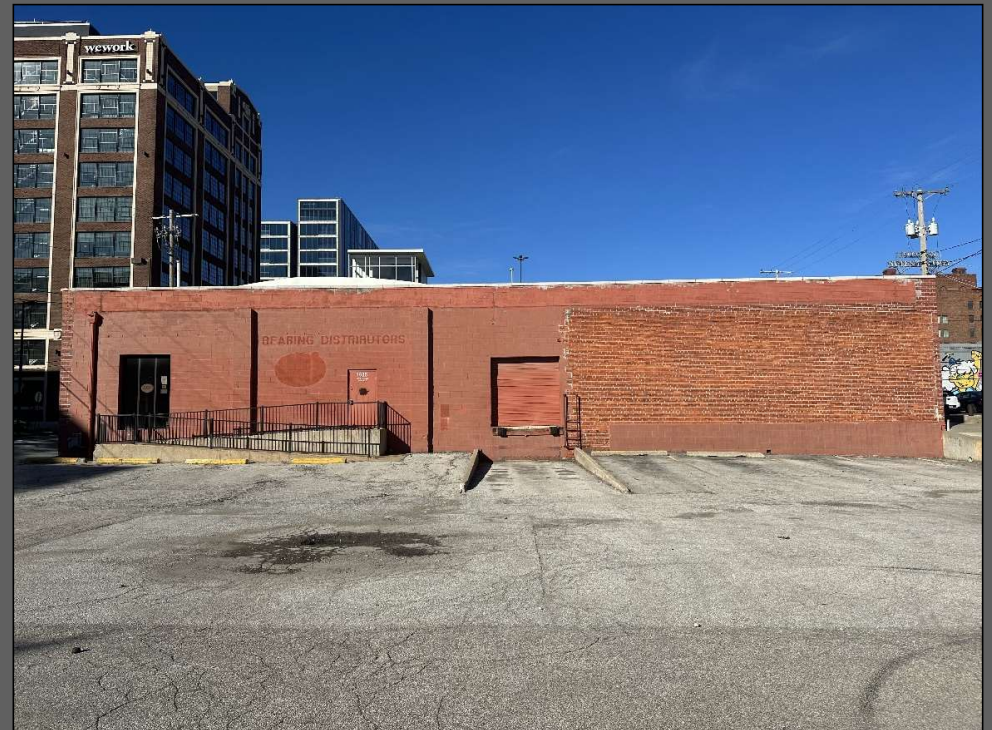
- Tax Abatement (10 years 75%; 5 years 37.5%)
- Bonds

Plan Area located within Non-Distressed Census Tract

Potential Redevelopment Projects

Proposed Redevelopment

- Multiphase
- Renovation/Demolition of existing buildings and site
- Mixed use space – commercial, multifamily



Potential Redevelopment

Blight – Statutory Definition

- Insanitary or unsafe conditions
- Deterioration of site improvements
- Conditions which endanger life or property by fire or other causes

Predominance of one or more blighting factors above leads to:

- Retards provision of housing accommodations, OR
- Economic liability, OR
- Social liability, OR
- Menace to public health, safety, morals, or welfare

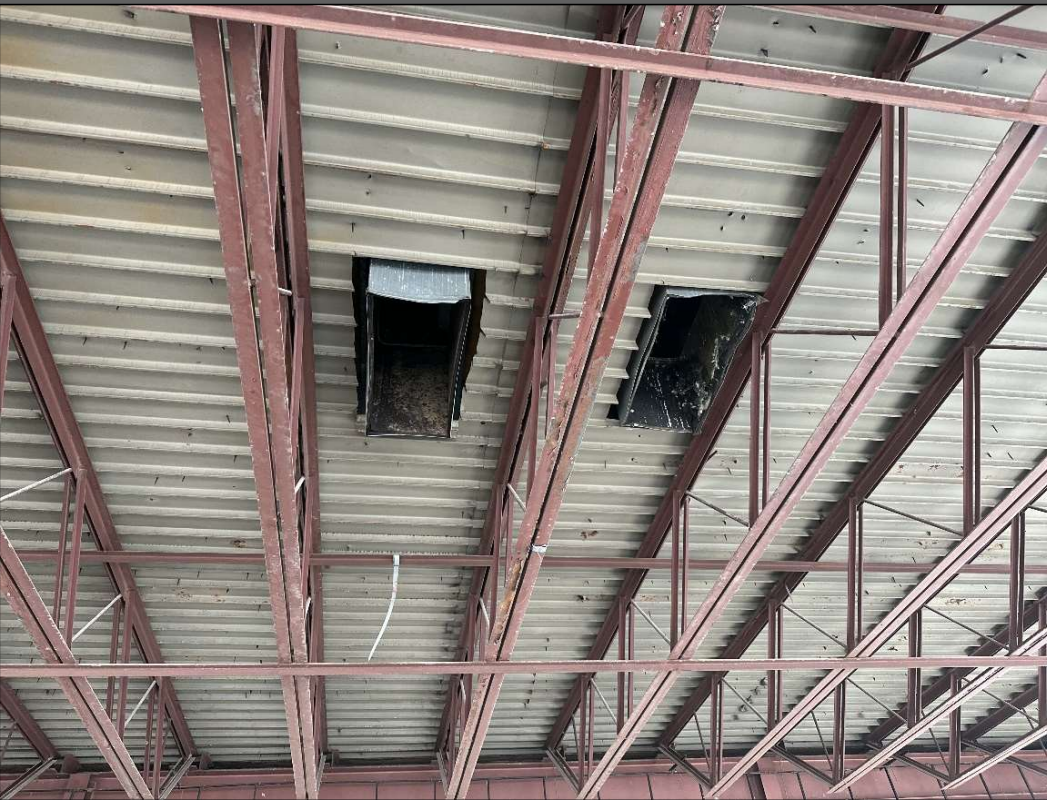
In present condition and use

Blighting Factors – Insanitary or Unsafe Conditions

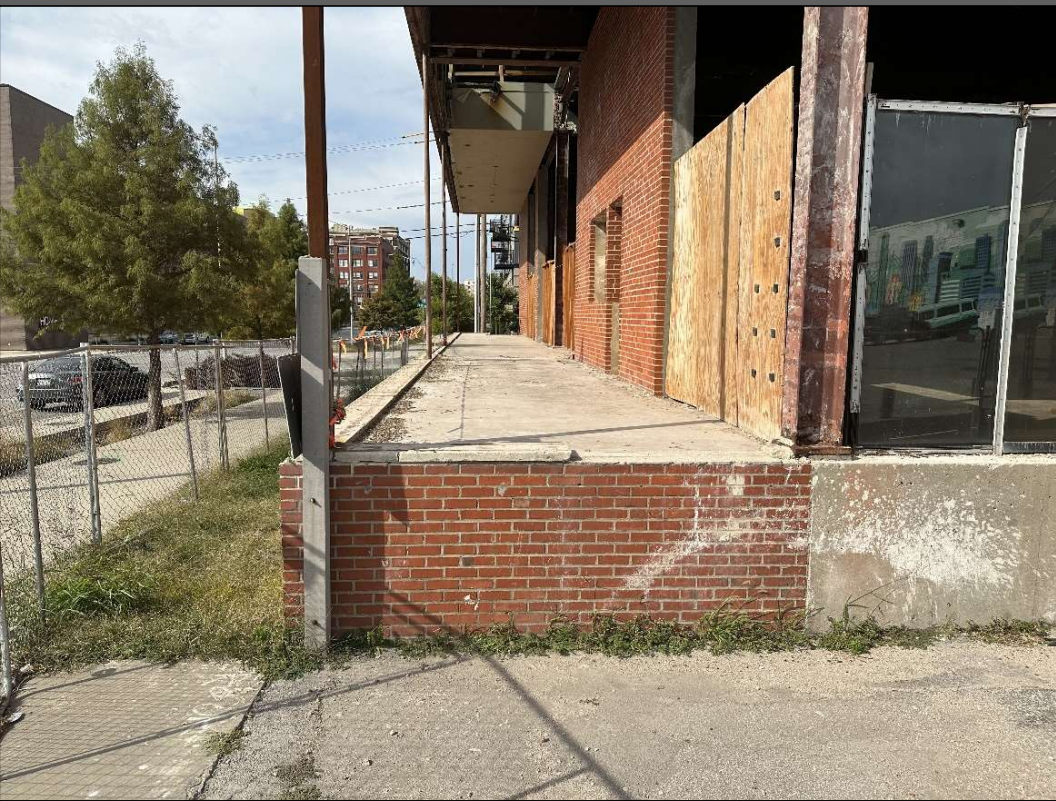
INSANITARY OR UNSAFE CONDITIONS

- Obsolete/non-functioning building systems
 - Life safety, electrical, HVAC, building enclosure
 - Lack of restrooms
- Lack of accessibility
 - No operating passenger elevator
- Pigeon Excrement
- Tripping and fall hazards
 - Deteriorated pavement / fall hazards

Blighting Factors – Insanitary or Unsafe Conditions



Blighting Factors – Insanitary or Unsafe Conditions



Blighting Factors – Insanitary or Unsafe Conditions



Blighting Factors – Insanitary or Unsafe Conditions



Blighting Factors – Deterioration

DETERIORATION

- Aging and deteriorating improvements
 - Primary deterioration - walls, windows and doors
 - Failure/damage of interior/exterior finishes
 - Secondary deterioration of pavement

Blighting Factors – Deterioration



Blighting Factors – Deterioration



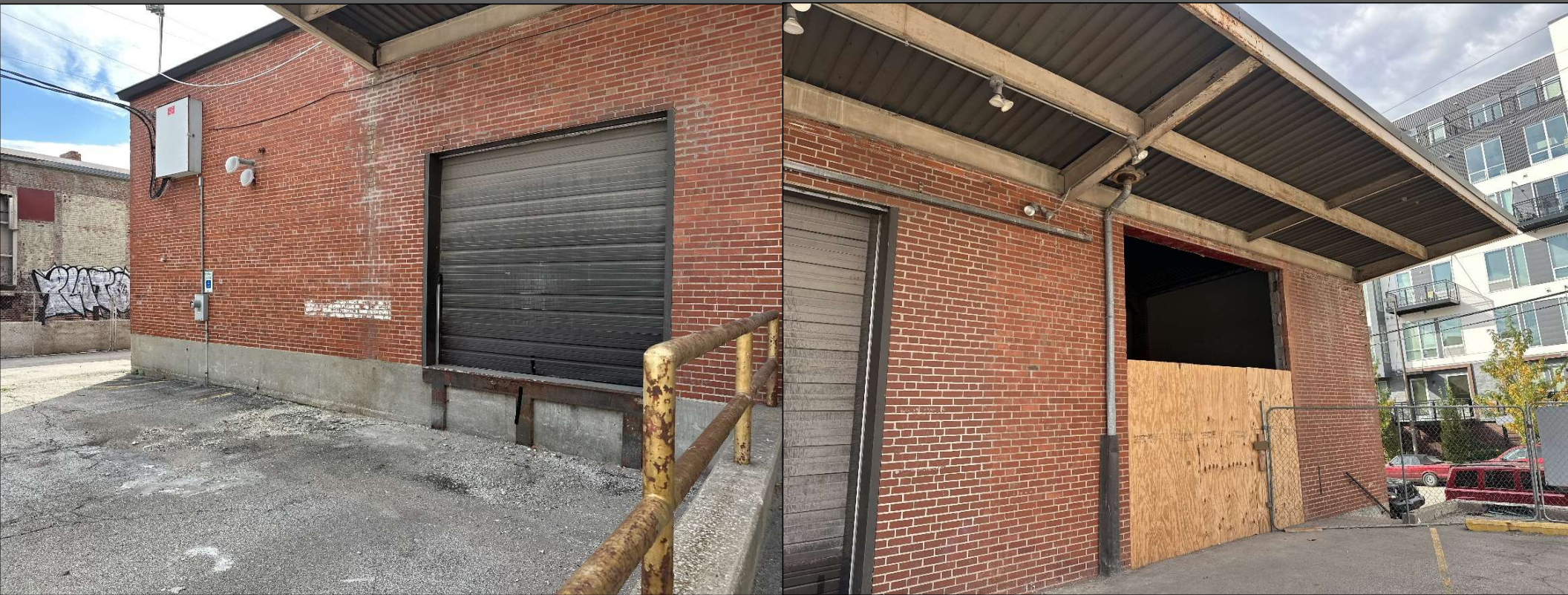
Blighting Factors – Deterioration



Blighting Factors – Deterioration



Blighting Factors – Deterioration



Blighting Factors – Deterioration



Blighting Factors – Summary

100 E. 20th Street PIEA Planning Area					
Summary of Blighting Factors					
Planning Area					
	Parcels	Pct.		Area (sq. ft.)	Pct.
Total	1	100%		45,314	100%
<u>Blighting Factors</u>					
Insanitary or unsafe conditions	1	100.0%		45,314	100.0%
Deterioration of site improvements	1	100.0%		45,314	100.0%
Existence of conditions which endanger life or property by fire and other causes	1	100.0%		45,314	100.0%
Parcels with Preponderance of Blighting Factors	1	100.0%		45,314	100.0%

Blighting Factors – Economic Liability

ECONOMIC LIABILITY

- Reduced, negligible income
- Low assessed values
 - One of handful of properties in Crossroads with 0% increase in 2023 assessed value
- Low tax revenue compared to mixed use properties
- Impaired economic value
 - Physical deterioration
 - Insanitary, unsafe conditions
 - High Vacancy

Blighting Factors – Social Liability / Menace...

SOCIAL LIABILITY

- Non-functioning, inadequate, nonexistent building systems
Life safety, accessibility, utilities, building enclosure
- Noncompliance with modern codes
- Pigeon excrement

MENACE TO PUBLIC HEALTH, SAFETY, MORALS, WELFARE

- Deteriorated and insanitary conditions threat to health
- Unsafe conditions threat to safety

Qualifications Analysis - Conclusion

The 100 E. 20th Street PIEA Planning Area of Kansas City, Missouri, as of November 1, 2023, in its present condition and use, is a “blighted area” according to the definition provided in Missouri’s Industrial Development statutes (RSMo Ch. 100).

Conclusion

sterrett urban, llc
704 canter st
raymore, mo 64083
patrick sterrett

100 E. 20th Street PIEA

Neighborhood Planning and Development Committee

January 10, 2024