

KANSAS CITY MISSOURI

Docket Items #4.1 & 4.2

CD-CPC-2024-00194

Rezoning

CD-CPC-2024-00195

Development Plan - Residential

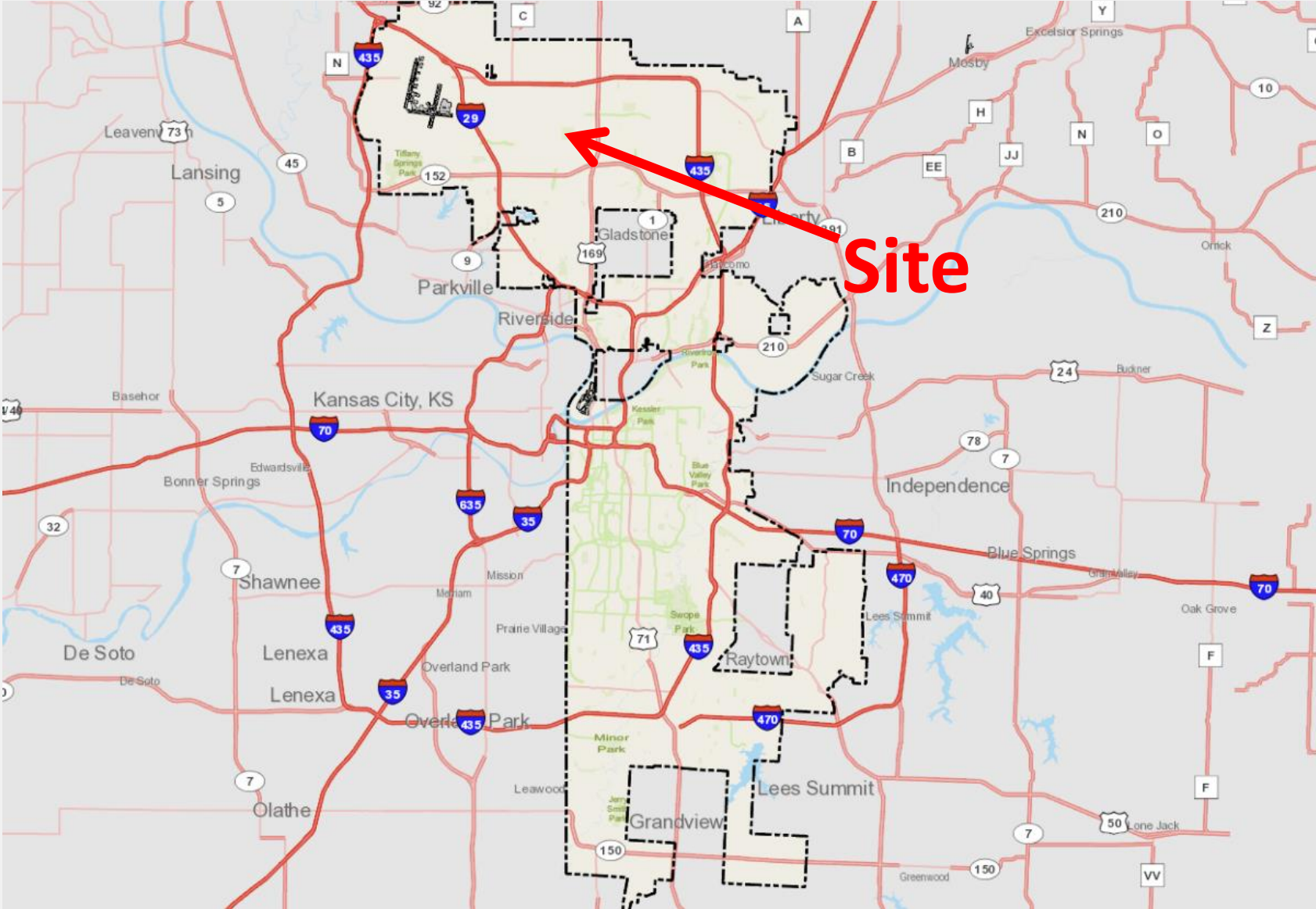
Moss Farm

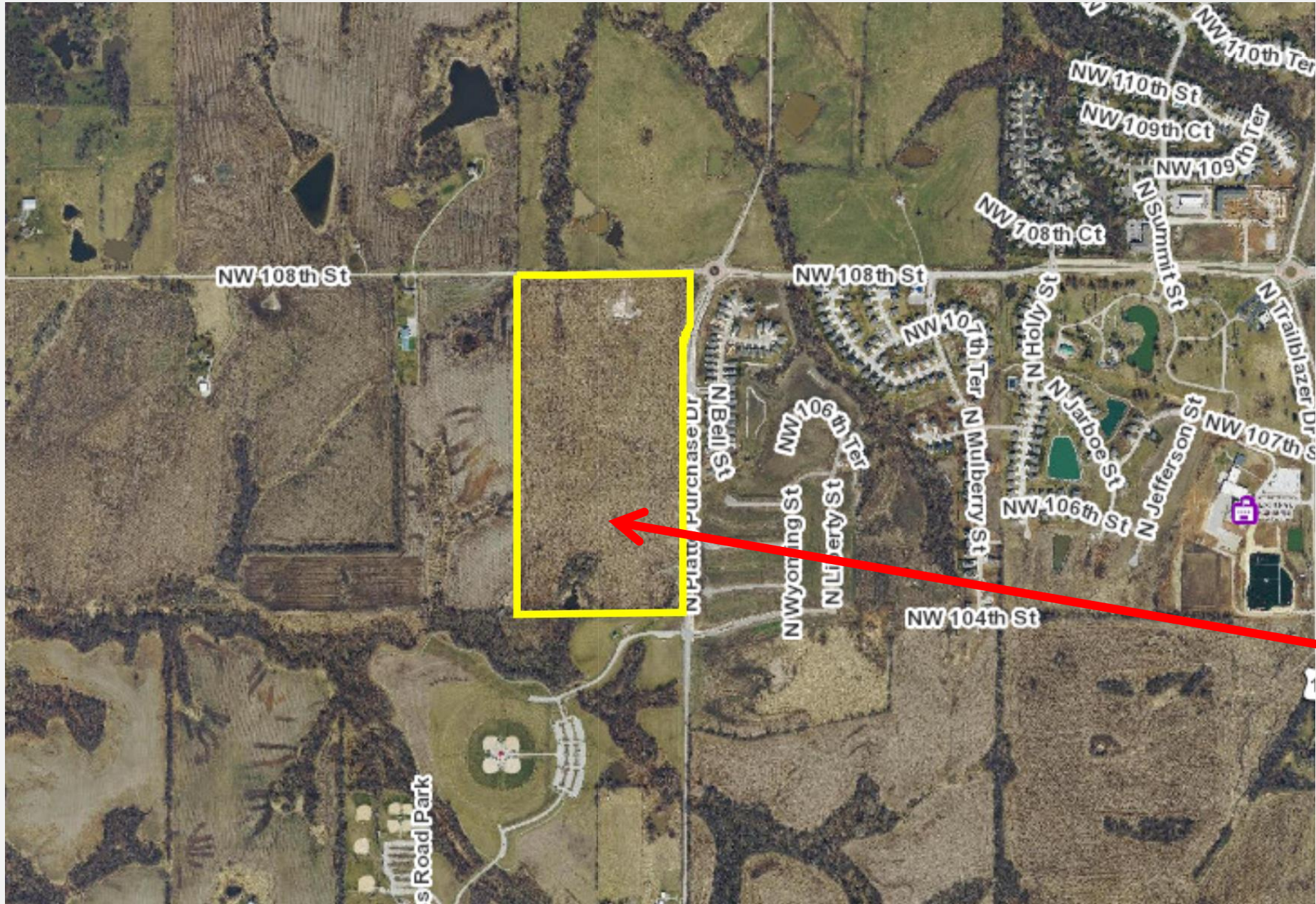
10700 N Platte Purchase Drive

February 5, 2025

City Plan Commission







Site

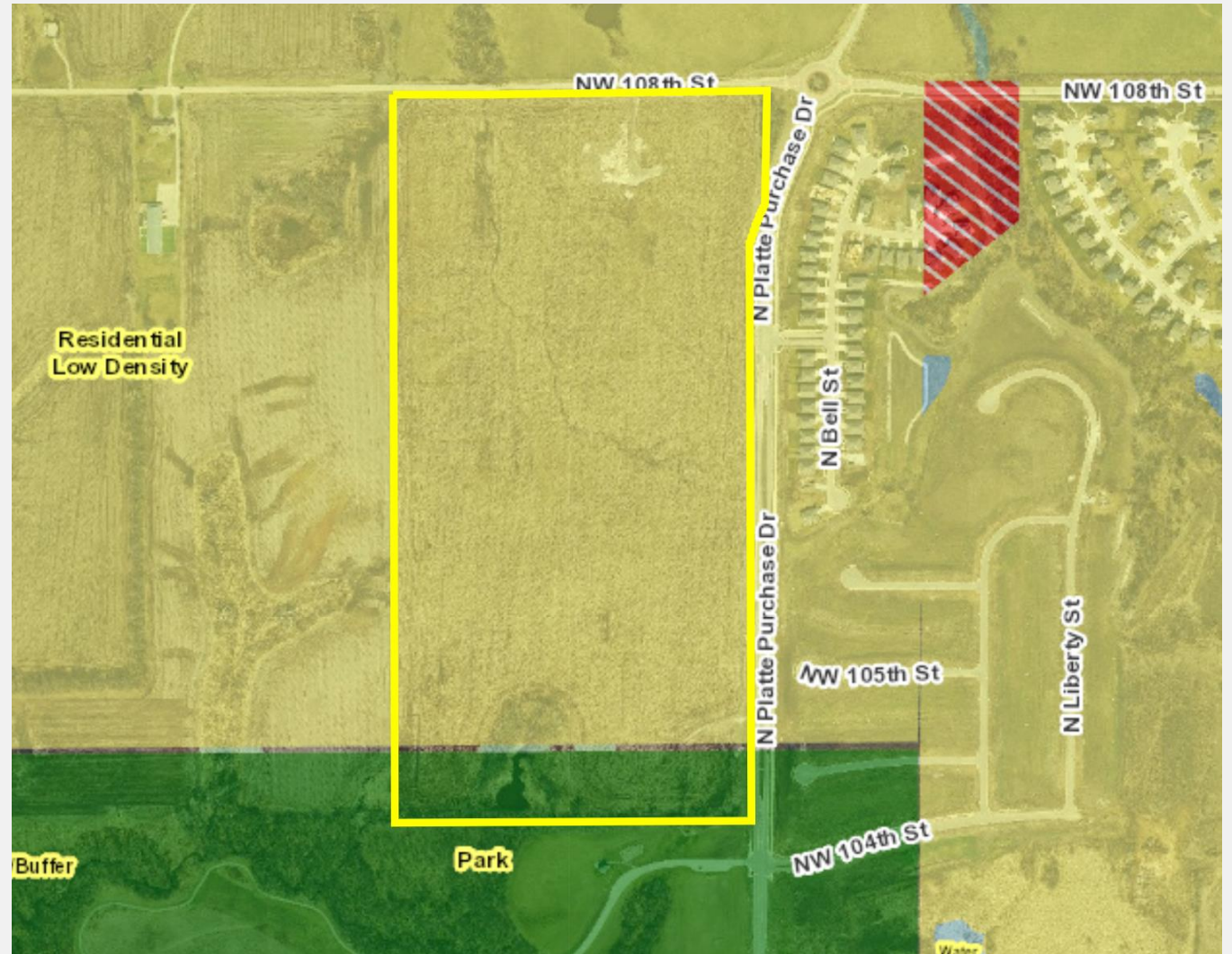
Future Land Use

Future Land Use:

Residential Low Density

Blue Ridge Area Plan Recommendation:

R-7.5 & R-6





View looking south on Northwest 108th Street



View looking west on North Platte Purchase Drive

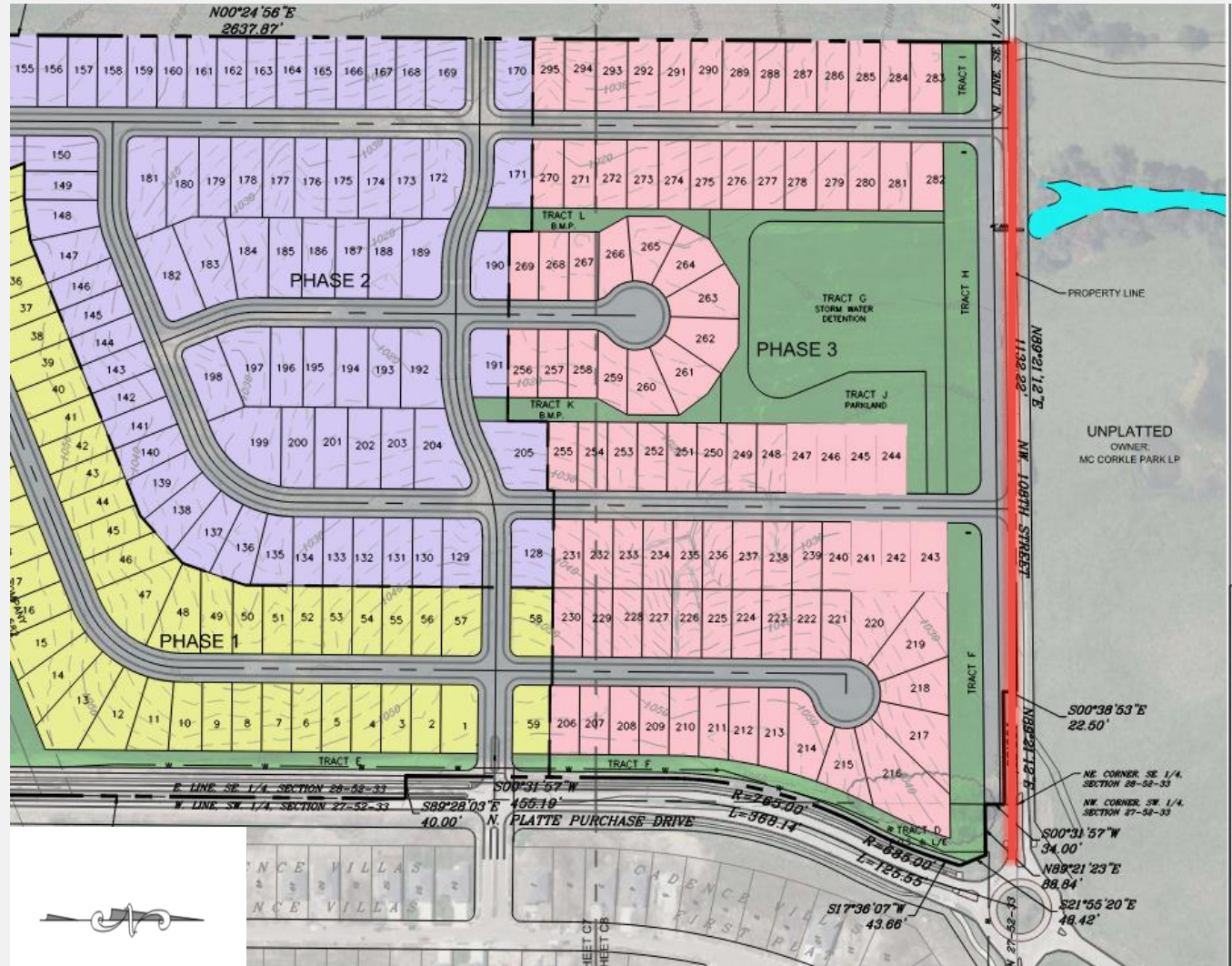
Site Plan

- 77 acres
- 295 lots (Detached Homes)
- Extension and creation of multiple streets
- Rezoning from R-7.5 to R-6

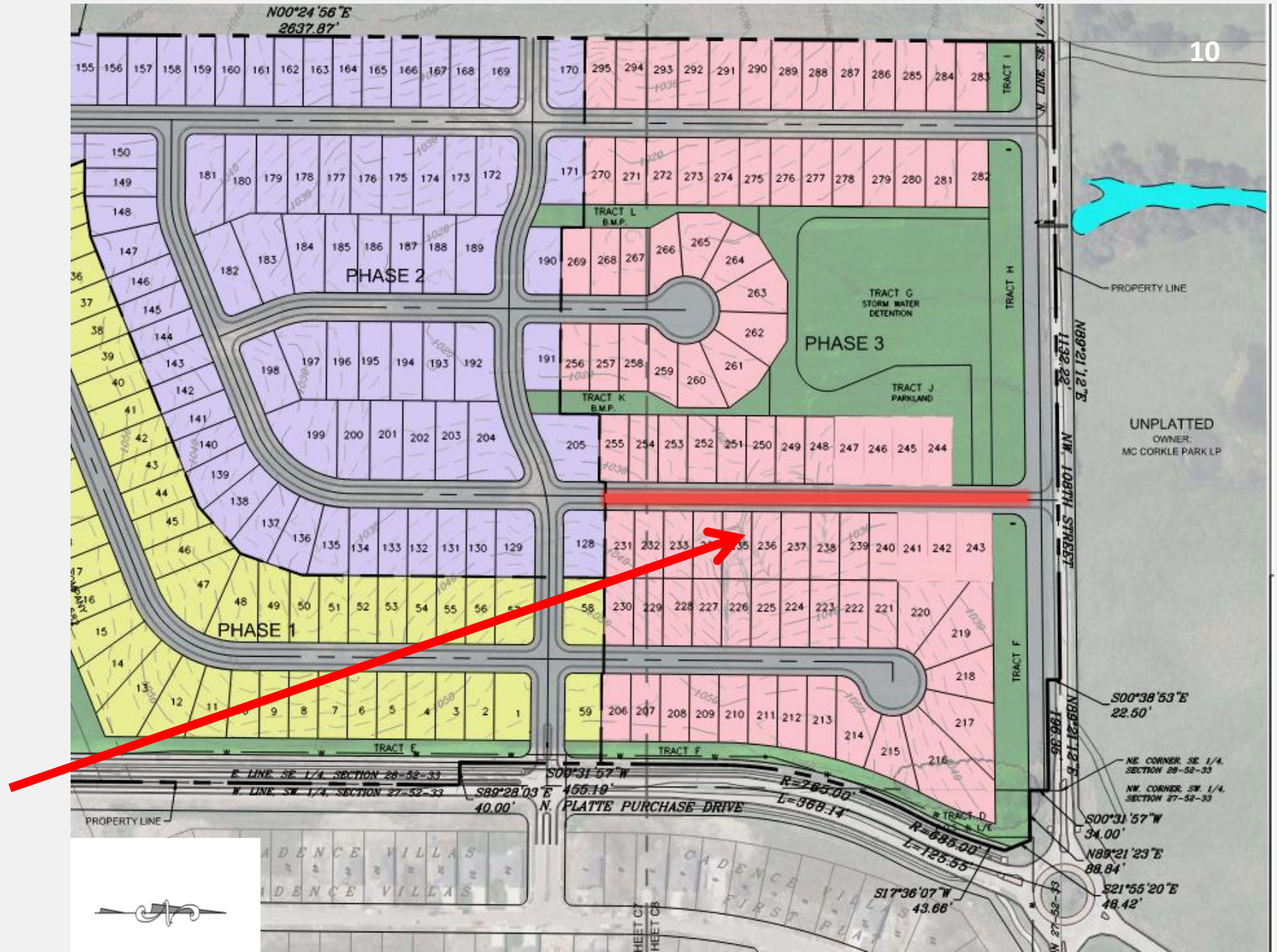


88-323 – Boulevard and Parkway Standards

- Northwest 108th Street is an established parkway
- 30' rear yard setback
- 60' "No build" landscape buffer provided
- Northeast Shoal Creek Parkway to be extended



Additional Connections





Staff Recommendation

**CD-CPC-2024-00194
Rezoning**

Approval

**CD-CPC-2024-00195
Development Plan - Residential**

Approval with Conditions