



ORDINANCE NO. 250374

Sewer Separation & Green Infrastructure: Diversion Structures 56, 58, 62, and 113

Authorizing a \$6,500,000.00 design professional services contract with Black & Veatch Corporation, for the Sewer Separation & Green Infrastructure: Diversion Structures 56, 58, 62, and 113 Project; and recognizing this ordinance as having an accelerated effective date.

May 6, 2025

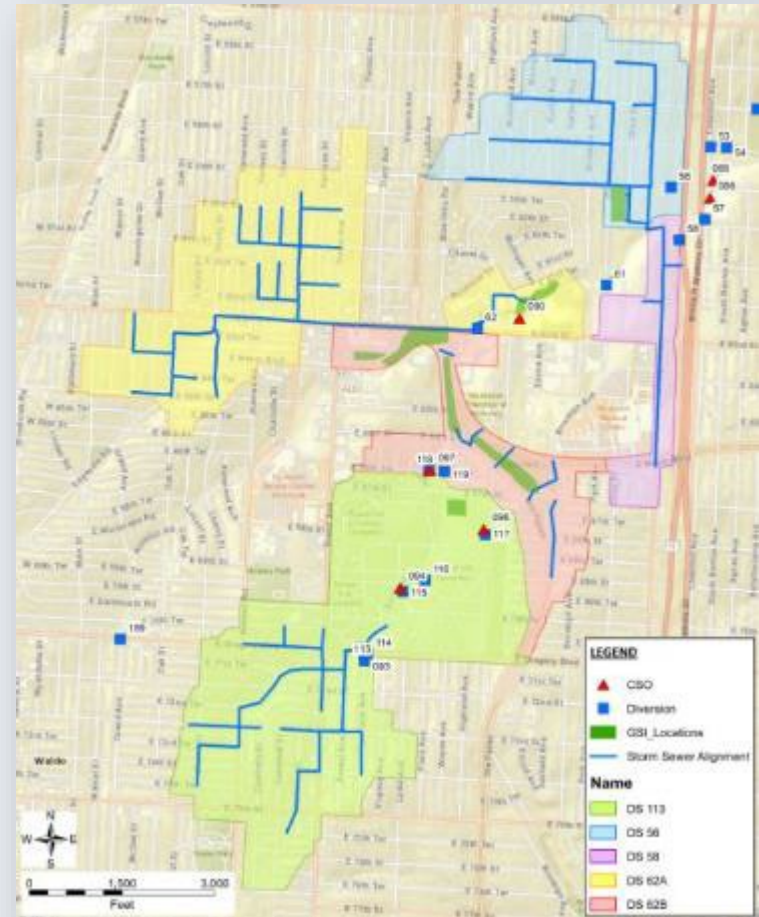
Transportation, Infrastructure & Operations
Committee



ORDINANCE NO. 250374

Project Description/Location:


- 55th to 77th Street; Main Street to U.S. 71 Highway
- Detailed design advancing from 30% to bid documents
- Consists of up to 5 future construction packages
- Will reduce combined sewer overflows by up to 200 million gallons per day
- Could provide up to approximately 200 green acres



ORDINANCE NO. 250374

PUBLIC ENGAGEMENT

- Public information sheet posted:
<https://www.kcsmartsewer.us/projects/dmb>
- Community working group
 - City staff, neighborhood leaders, business owners, community members, school leaders
- Previous public meetings
- Engagement resumes summer 2025



INFRASTRUCTURE UPDATE

GREEN INFRASTRUCTURE PROJECT 2-1: 63RD STREET & DANIEL MORGAN BOONE PARK


PHASE 1 PRELIMINARY DESIGN IS ANTICIPATED TO BE COMPLETE IN 2024

KC Water is undertaking a green infrastructure and stormwater collection system project in the Town Fork Creek Watershed, with Daniel Morgan Boone Park near the intersection of 63rd Street and Woodland Avenue being a prime location for green infrastructure. This project will largely utilize green infrastructure and native plants to help absorb excess stormwater and collect, treat and infiltrate stormwater runoff. Stormwater from the area surrounding Daniel Morgan Boone Park will be collected and separated from the combined sewer system and conveyed to the green infrastructure components of the project. This major, multi-year Smart Sewer program project will be designed and constructed in multiple phases. When complete, this project will help protect our community's environment by capturing stormwater before it enters the combined sewer system, which will lessen the sewer overflows into local waterways.

Project Area

THIS PROJECT IS LOCATED AROUND DANIEL MORGAN BOONE PARK IN THE TOWN FORK CREEK WATERSHED. THE BOUNDARIES ARE:


- North: 55th Street
- South: Gregory Boulevard
- East: Bruce R Watkins Drive
- West: Morningstar Drive



Questions?

TO LEARN MORE, PLEASE CONTACT:

STEVE STUEWPFIG Project Manager Burns & McDonnell (816) 784-5457 stuewfig@burnsmcd.com	LAURA ADAMS Design Professional Burns & McDonnell (816) 494-1049 ladams@burnsmcd.com	ANDY SHIVELY Deputy Director KC Water (816) 253-4344 andy.shively@kcwater.org
--	--	--

VISIT [KC SMARTSEWER.US/PROJECTS/DMB](https://www.kcsmartsewer.us/projects/dmb) TO LEARN MORE


ORDINANCE NO. 250374

M/WBE CREO KC Goals

CREO KC established goals of 10.9% MBE and 10.9% WBE on this design professional services project on November 4, 2024.

MBE Firms

Parson & Associates, LLC
Innovative Integrity in Design LLC
Taliaferro & Browne, Inc.

WBE Firms

McCurdy Engineers, LLC
TREKK Design Group
TSO Geotechnical, Inc.
Vireo LLC
Abay Construction Inc.

THANK YOU