

Ordinance No. 260213

KCI 29 Logistics Park (Major Amendment)

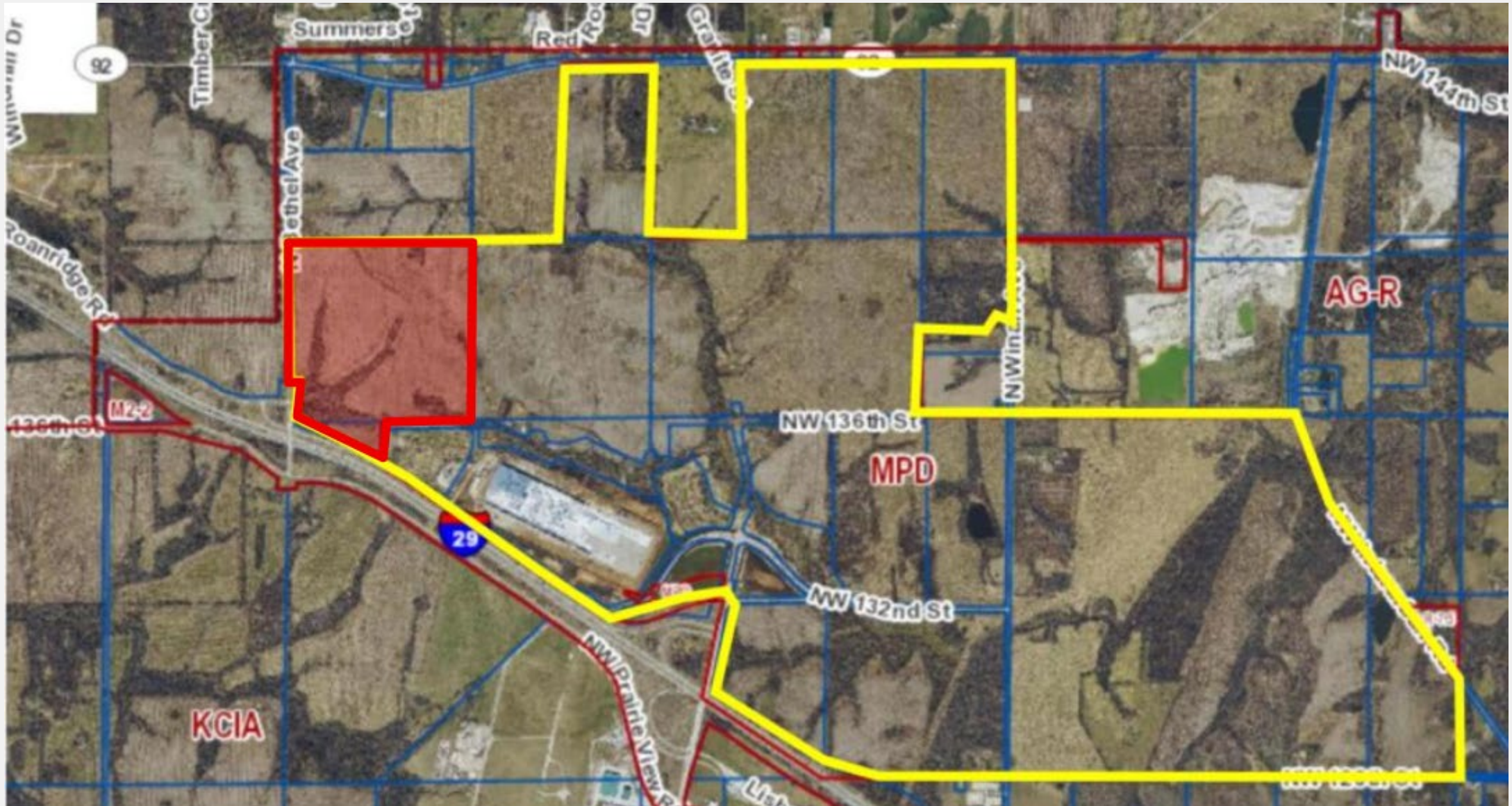
CD-CPC-2025-00169

13651 N Bethel Ave

March 9, 2026

Neighborhood Planning and Development Committee





History

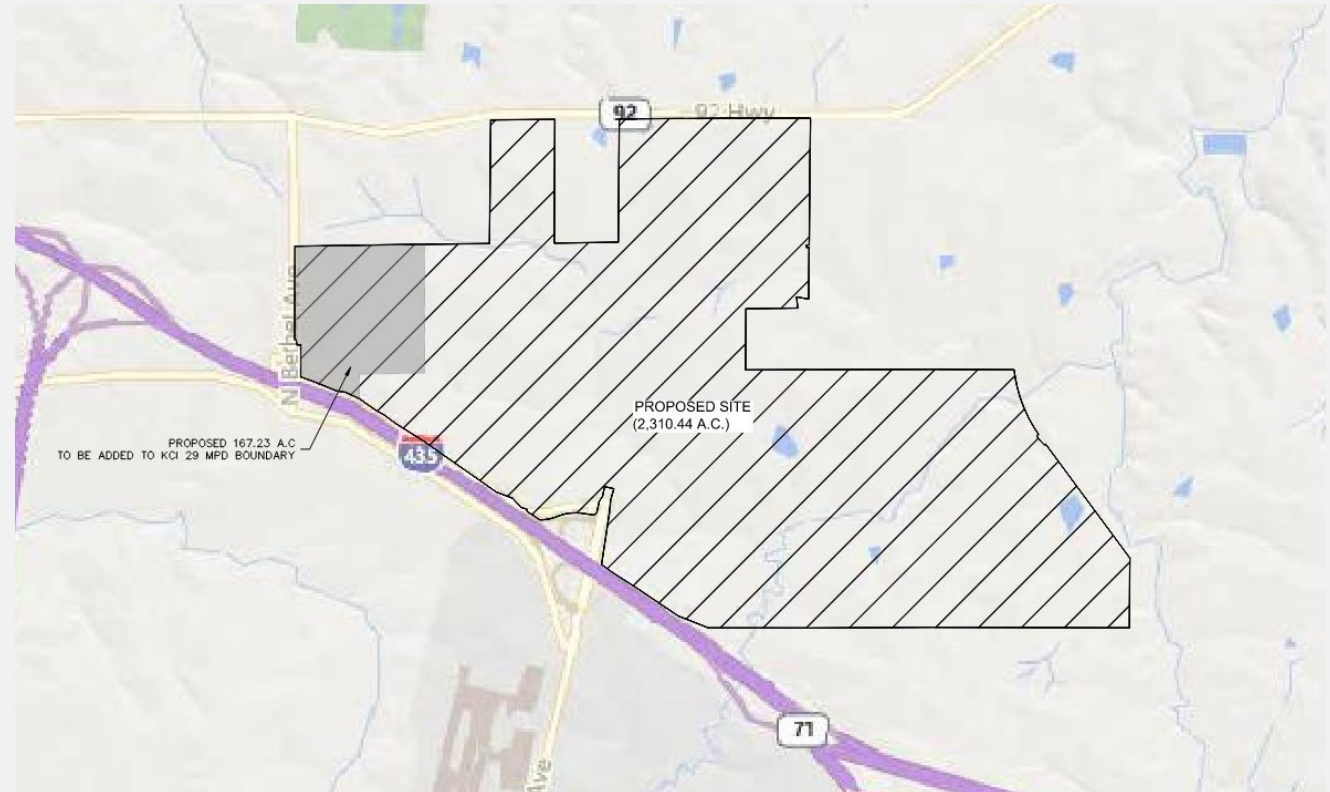
KCI 29 Logistics Park is approved by Council 10/6/2022
(CD-CPC-2022-00097)

Minor Amendment to update phasing of
preliminary plat (CD-AA-2024-00029)

Major Amendment to add 7-acre MoDot ROW (CD-
CPC-2024-00138)

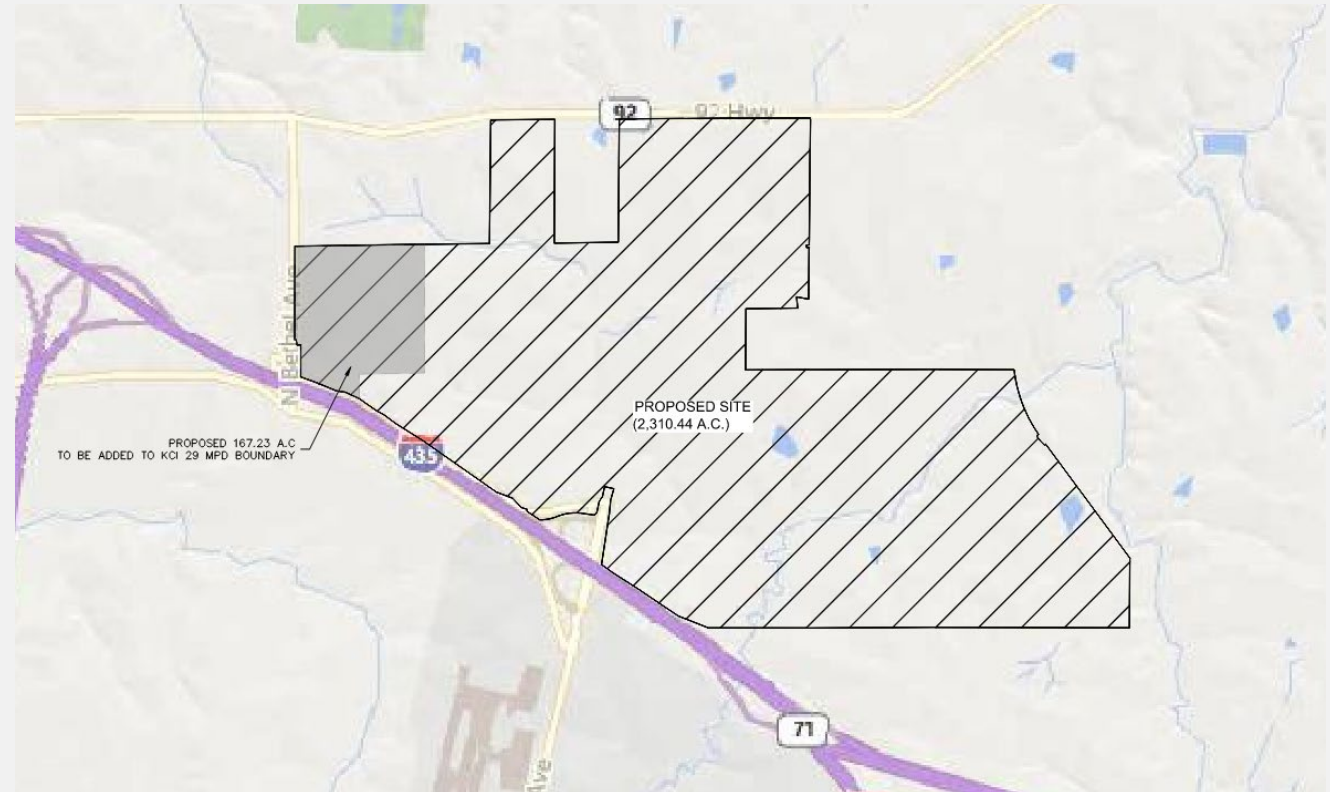
Request

- To bring in 167.23 acres into the MPD Plan District
- Controlling Ordinance No. 220883 shall remain in full force and effect.



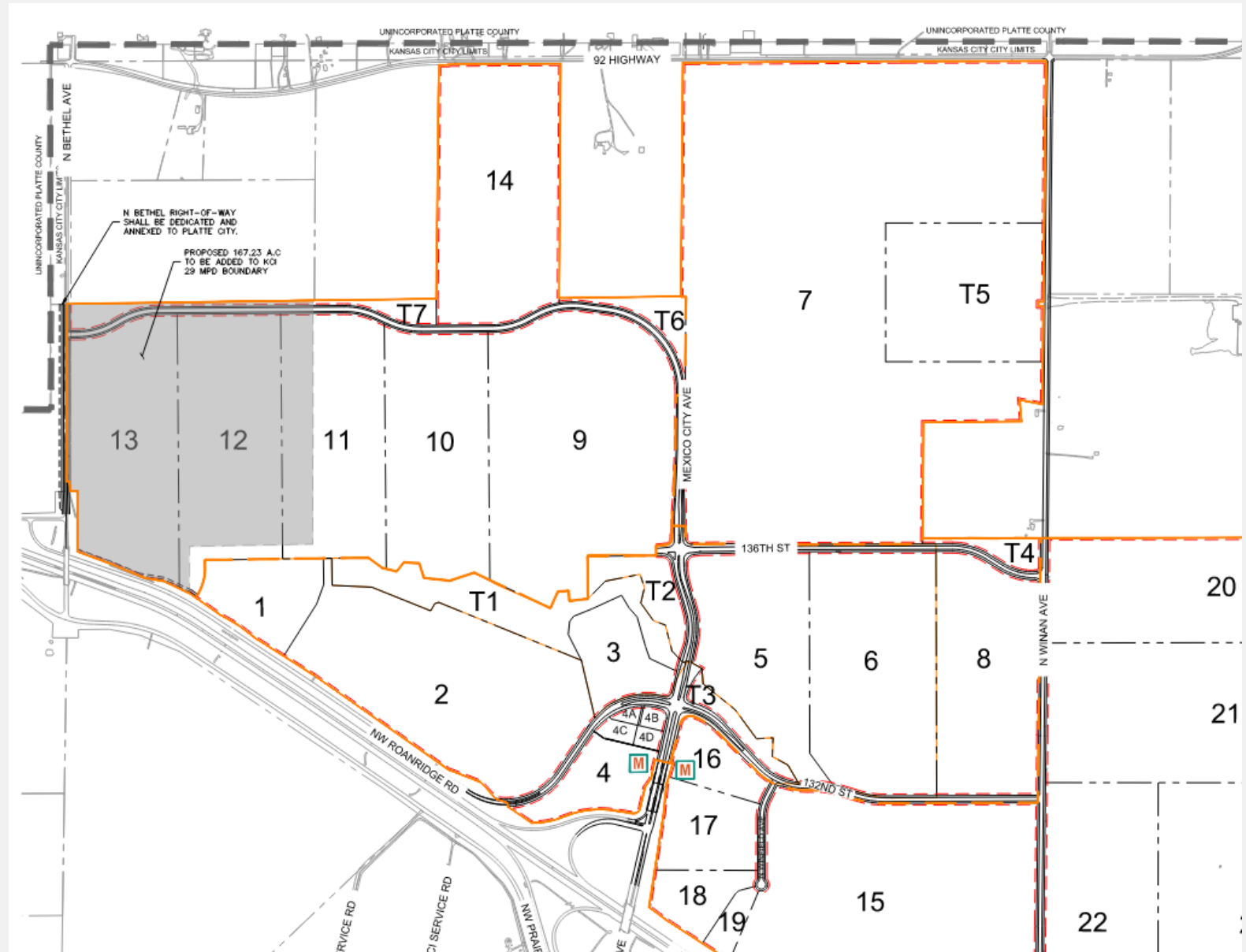
Revisions

- Revised the language for the MPD Final Plans (Administrative)
- Best Practice = follow DRC schedule for approval



Major Street Plan Amendment

- Applicant proposing to realign Mexico City Avenue
- Will reroute to North Bethel Avenue
- Condition added to gain approval or revise accordingly.







CPC Recommendation

Case # CD-CPC-2025-00169

Approval with Conditions