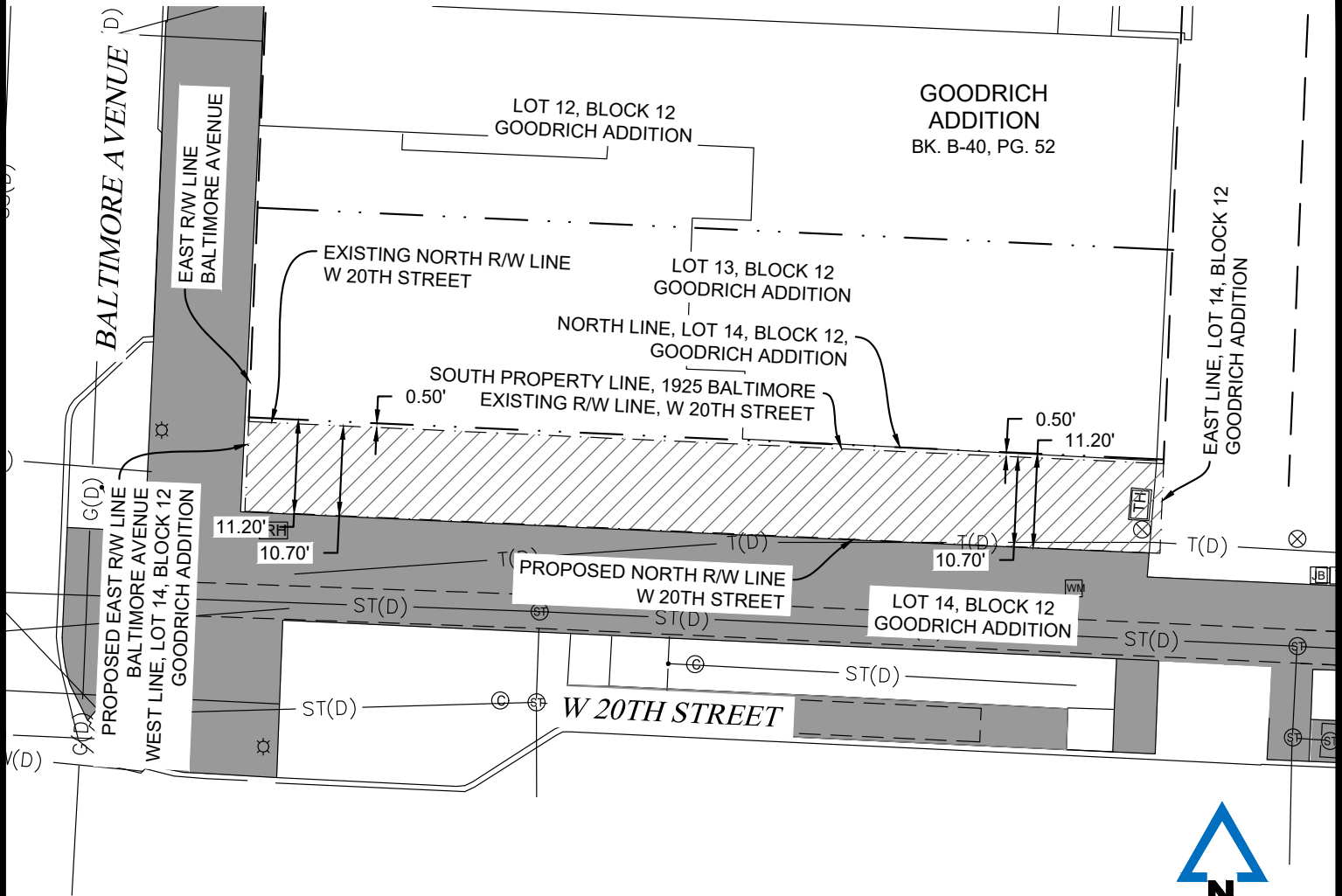


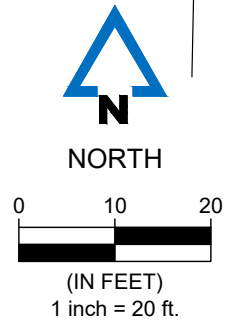
# VACATION OF RIGHT-OF-WAY EXHIBIT



## LEGAL DESCRIPTION:

SOUTH 10.70 FEET OF THE NORTH 11.20 FEET OF LOT 14, BLOCK 12, GOODRICH ADDITION.

DESCRIBED AREA CONTAINS 1,168 SQUARE FEET.



## LEGEND

---	LOT LINE	JB	JUNCTION BOX
---	ROW LINE	C	STORM SEWER CLEANOUT
G(D)	GAS LINE	ST	STORM SEWER MANHOLE
ST(D)	STORM SEWER LINE	S	STREET LIGHT
T(D)	COMMUNICATION LINE	TH	TELECOM HANDHOLE
W(D)	WATER LINE	RH	TRAFFIC HANDHOLE
▨	EXHIBIT AREA	X	UTILITY POLE
■	CONCRETE SIDEWALK	WM	WATER METER



THE PROPERTY SHOWN AND DESCRIBED HEREON ACCURATELY DESCRIBES A PORTION OF W 20TH STREET RIGHT-OF-WAY THAT IS INTENDED TO BE TRANSFERRED TO PRIVATE OWNERSHIP BY A SEPARATE SURVEY DOCUMENT AUTHORIZED AND APPROVED BY THE CITY PLANNING AND DEVELOPMENT DEPARTMENT



1700 Swift Street, STE 100  
North Kansas City, Missouri 64116  
816-756-0444  
www.mcclurevision.com

REVISIONS

1925 BALTIMORE  
VACATION OF  
RIGHT-OF-WAY  
KANSAS CITY, MISSOURI  
JACKSON COUNTY

ENGINEER  
SURVEYOR  
S. WHITAKER

DRAWN BY  
C. COOPER  
CREW CHIEF

SKETCH NO.  
**EXH-01**

7/14/2025