

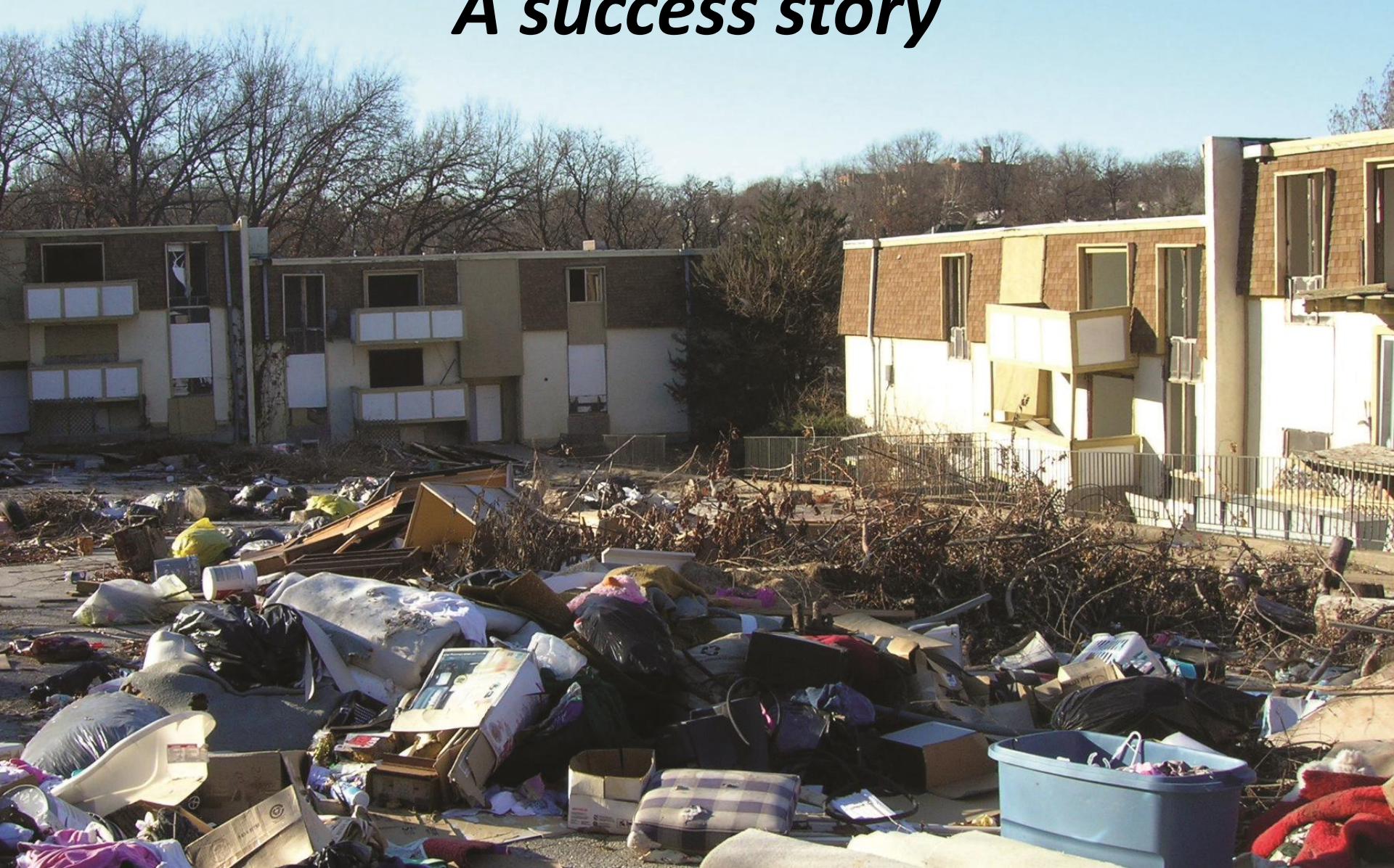
BEFORE & AFTER

*An update of the City's partnership with Legal Aid,
neighborhood groups and others to fight urban core blight*



BEFORE & AFTER

A success story







A
to
p

-
-
-

- Work with proven private developers
- Make critical improvements in the neighborhood











Thank you for a wonderful partnership



LEGAL AID OF 
WESTERN MISSOURI