

Docket # 6

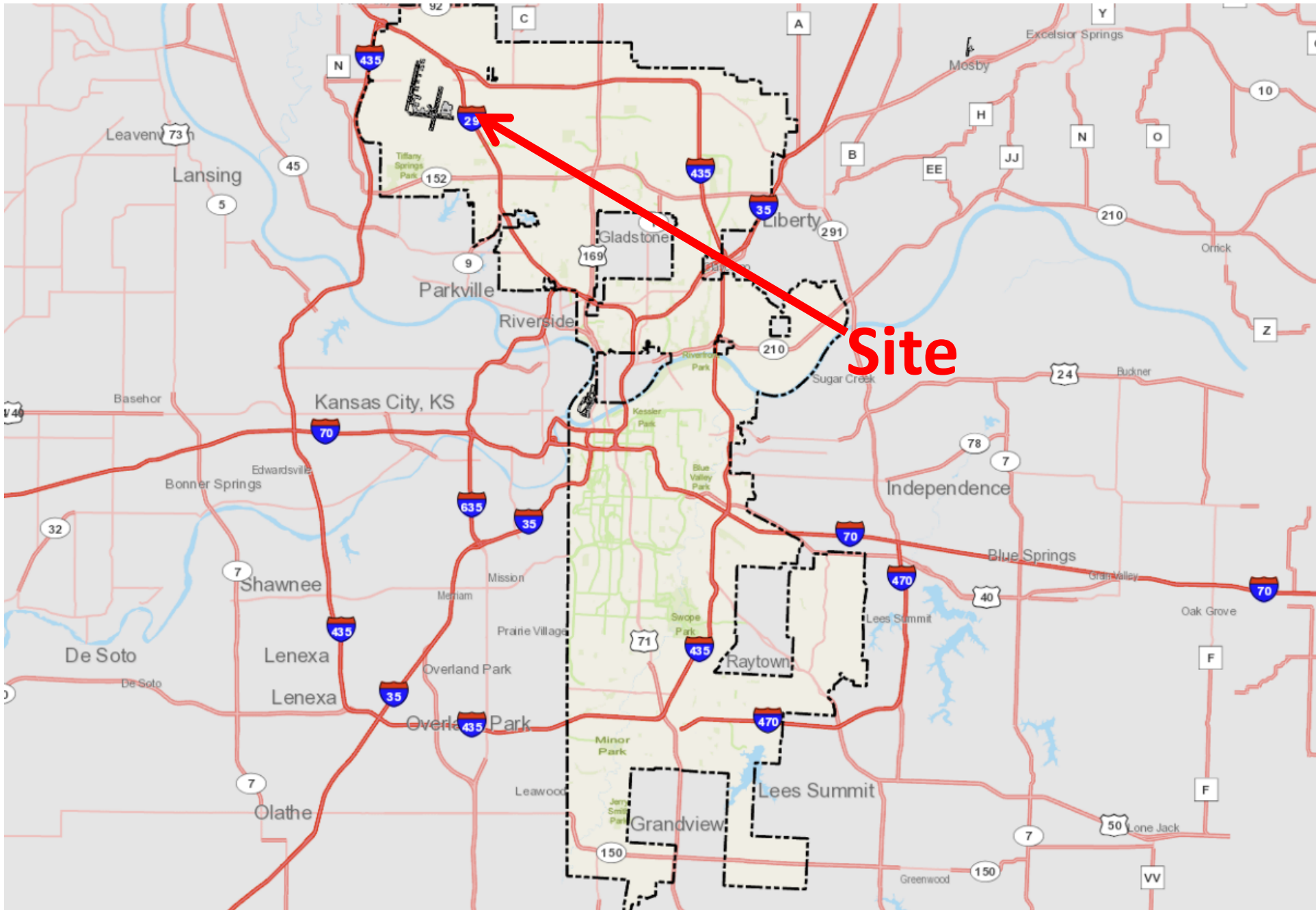
Master's Transportation - KCI

Case No. CD-CPC-2023-00098

Rezoning without Plan



Case No. CD-CPC-2023-00098





Case No. CD-CPC-2023-00098



View looking northwest from NW 112th Street



Case No. CD-CPC-2023-00091



View looking northeast from NW 112th Street



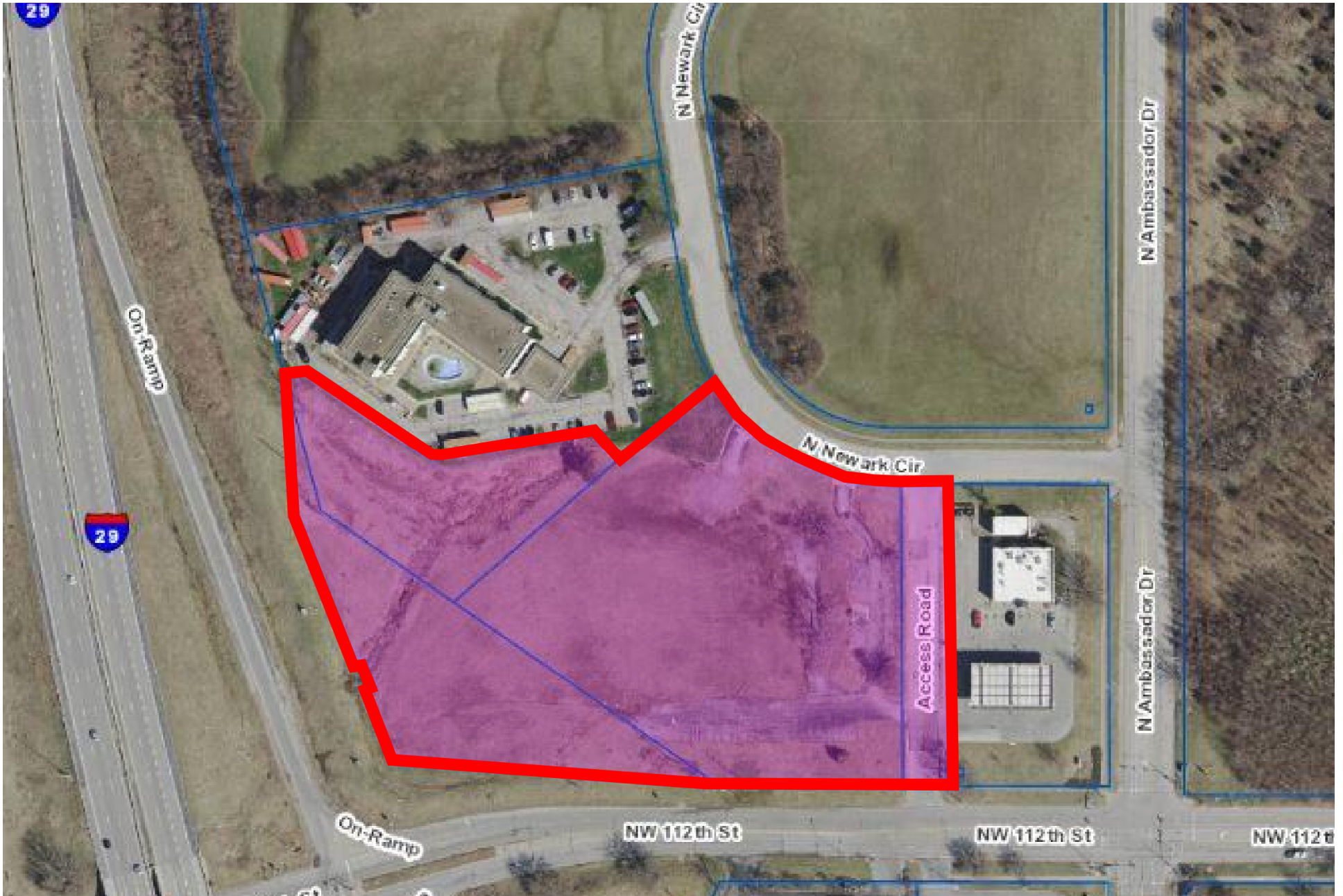
Case No. CD-CPC-2023-00091



View looking southwest from N. Newark Circle



Case No. CD-CPC-2023-00091



Case No. CD-CPC-2023-00091

Staff Recommendation:

Case No. CD-CPC-2023-00098

Approval

