

## Westley Signage Specifications:

### General:

Refer to Kansas City MO Ordinance 88-445-07-Signs

Three signs per tenant are allowed

Total area of all signs is limited to 10% of the tenants exterior facade wall area

Tenant Sign Vendor to secure all required permits and approvals from governing authorities.

Proposed Tenant Signage Areas and Locations are as described on elevation sheets herein

Lighting Source to be LED

Landlord to review and approve design fabrication drawings prior to fabrication

Landord to review and approve attachment techniques; Tenant to assure integrity of attachment method and must protect the integrity of the building facade and architectural features.

### Wall Signs:

Individually mounted letters

Reverse Channel Halo / Backlit, or

Reverse Channel Plex Face internally illuminated

Lettering is 3" to 5" deep

### Logo Signs:

30" x 30" size

Depth to match Wall Sign lettering depth

### Blade Signs:

Limited to 12 SF per City Ordinance

Box Sign with plex face and 3" to 5" side returns

Mount on standoff brackets 4" to 8" off wall face

Bottom of Blade Sign to be minimum of 8'-1" above sidewalk

### Tenant Address Signage:

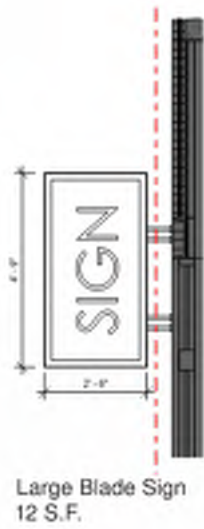
4" high white adhesive vinyl mounted to glass above tenant door

### Not allowed:

Box Signs, except Logo Signs described herein

Signs requiring "gooseneck" or other similar methods of illumination

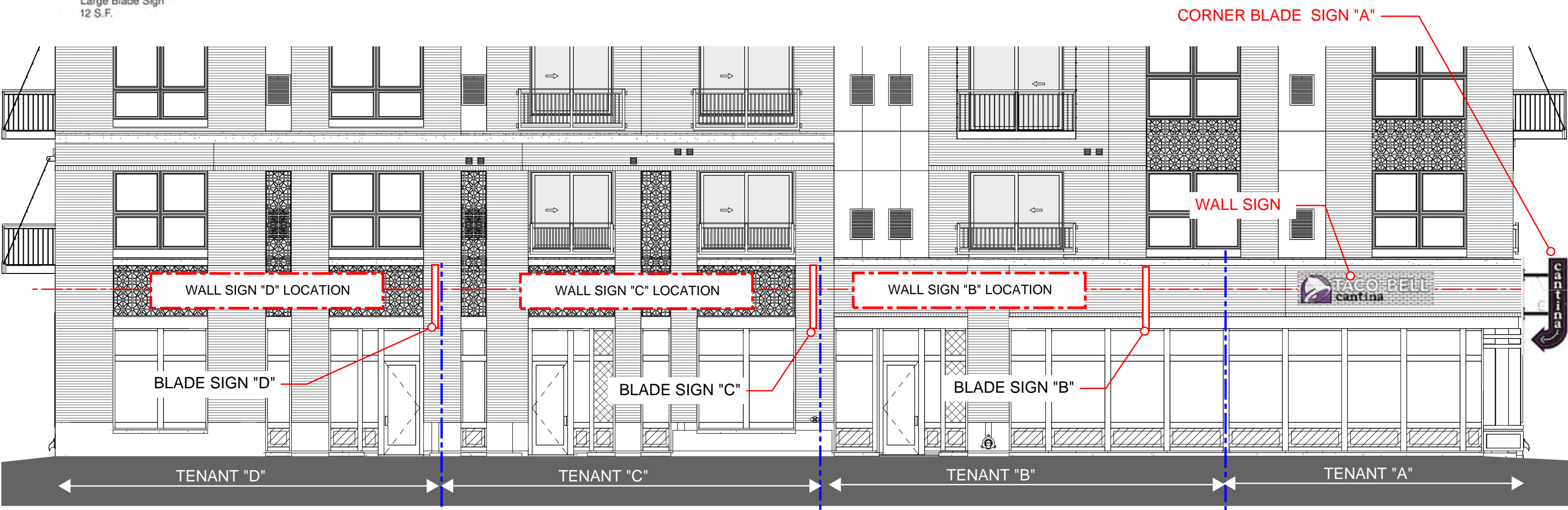
Manufacturer labels or other applied stickers



**In reference to Kansas City MO Ordinance 88-445-07-Signs**

Three signs per tenant is allowed per ordinance.  
 For this submittal, we are requesting only two signs for Tenants B, C, D.  
 Retail Tenant A signs are previously approved per CD-AA-2021-0009.  
 Total area of all signs is limited to 10% of the tenants exterior facade wall area

\*Note that there are no requested changes to the quantity of Tenant A signs from the previous approval CD-AA-2021-0009. Since that approval, the Tenant has revised and decreased their total signage SF. This decrease is noted in detail on the table accompanying this submittal (Excel file).



TENANT "D" WALL AREA:  
 15'-6" X 32'-6" = 503.75 S.F. / 10% = 50.37 SF.  
 WALL & PROJECTING BLADE SIGNS OPTIONS  
 PROJECTING BLADE SIGNS LIMITED TO 12 SF OF  
 THIS OVERALL TOTAL 50.37 SF TOTAL

TENANT "C" WALL AREA  
 15'-6" X 32'-0" = 496 S.F. / 10% = 49.6 SF.  
 WALL & PROJECTING BLADE SIGNS OPTIONS  
 PROJECTING BLADE SIGNS LIMITED TO 12 SF OF  
 THIS OVERALL TOTAL 49.6 SF TOTAL

TENANT "B" WALL AREA  
 15'-6" X 34'-0" = 527 S.F. / 10% = 52.7 SF.  
 WALL & PROJECTING BLADE SIGNS OPTIONS  
 PROJECTING BLADE SIGNS LIMITED TO 12 SF OF  
 THIS OVERALL TOTAL 52.7 SF TOTAL

TENANT "A-NORTH" WALL AREA  
 THIS SIGNAGE FOR TACO BELL CANTINA HAS BEEN  
 CITY APPROVED PER CD-AA-2-21-00094

TENANT "A-WEST" WALL AREA  
SIGNAGE FOR TACO BELL CANTINA HAS BEEN CITY APPROVED PER CD-AA-2-21-00094

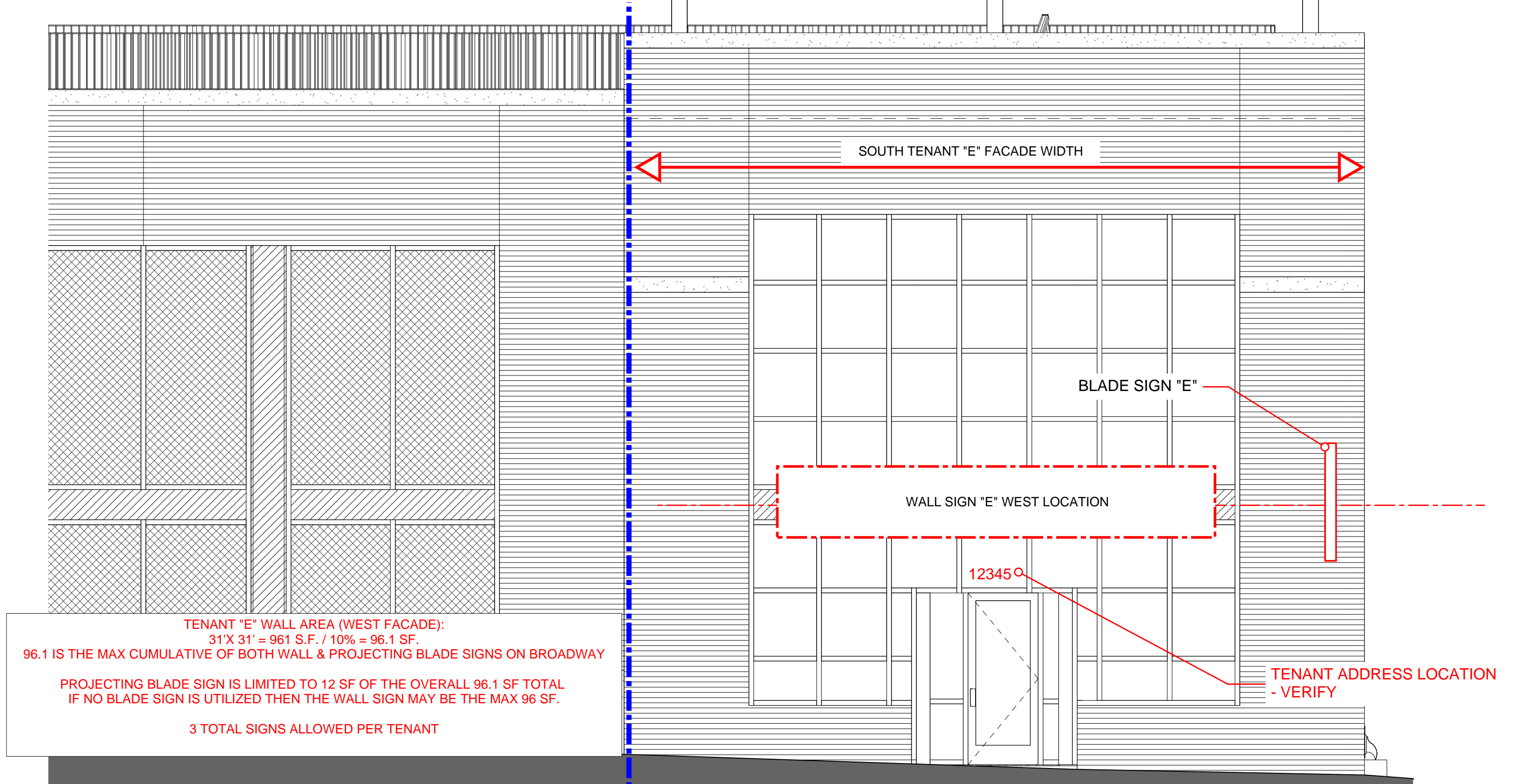


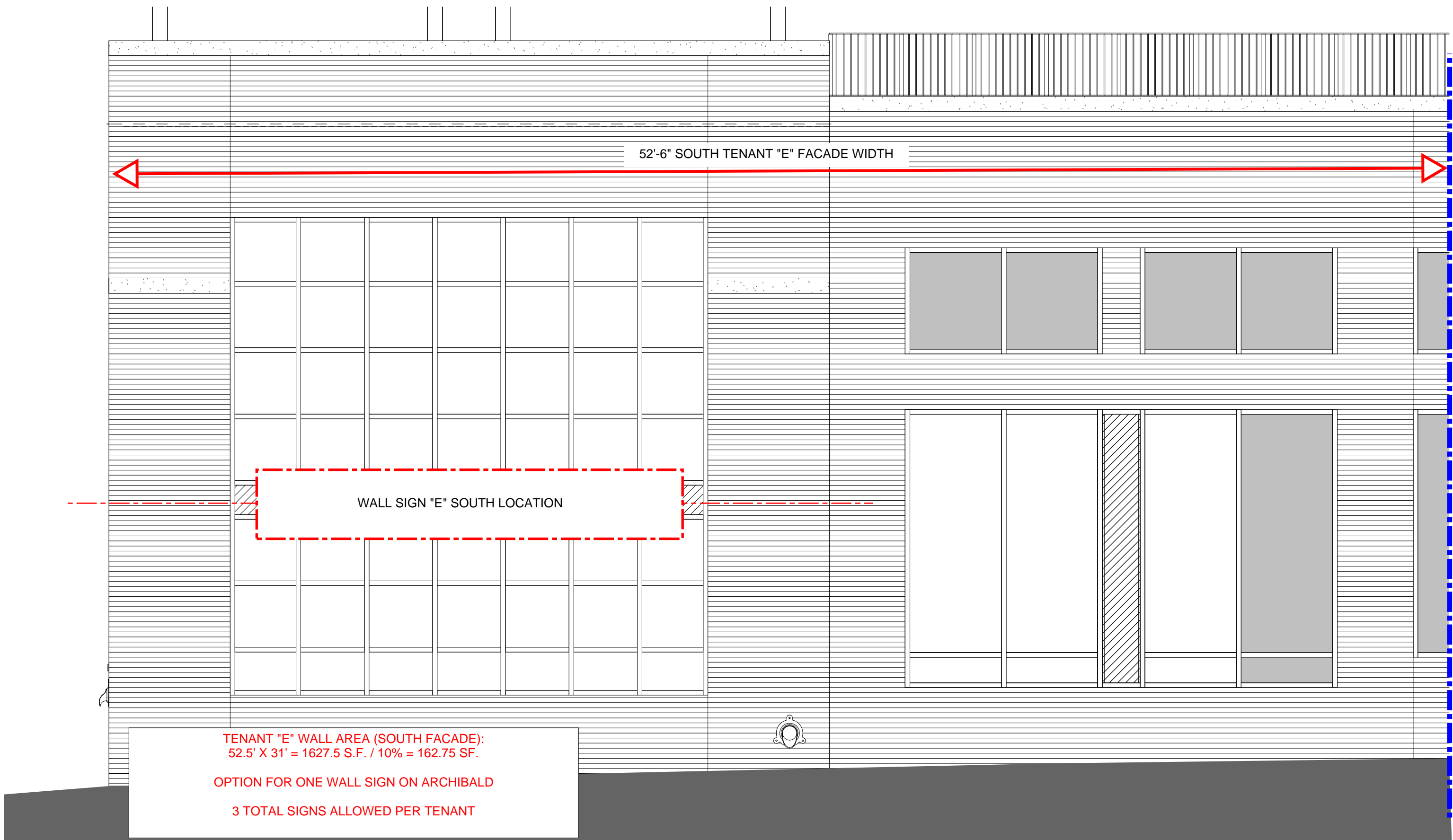
**In reference to Kansas City MO Ordinance 88-445-07-Signs**

Three signs per tenant are allowed per the ordinance.

We are requesting a total of three signs for Tenant E, two on the Broadway/West facade and one on the Archibald/South facade (Next page).

Total area of all signs is limited to 10% of the tenants exterior facade wall area.





TENANT "E" WALL AREA (SOUTH FACADE):  
 52.5' X 31' = 1627.5 S.F. / 10% = 162.75 SF.

OPTION FOR ONE WALL SIGN ON ARCHIBALD

3 TOTAL SIGNS ALLOWED PER TENANT

**OPUS WESTLEY SIGNAGE TABLE**

September 5, 2021

Last Approved Submittal					Proposed Amendment			Cumulative			
CD-AA-2021-00094 Approved 07.02.2021 (v4)					Proposed Signage (v7)						
#					#						
SF					SF						
Facade	Space	PDF Page	Approved	Description	Approved	Proposed	Description	Proposed	SF Calc	NOTES	Description
North	A	2	1	Wall	30	2	Blade & Wall	50.81	(23.96 + 26.85)	Approved CD-AA-2, 21-00094	SF has been updated to reflect the Taco Bell Cantina Wall Sign + Corner Bade Sign "Actual Plans" to be submitted by Tenant for City approval.
(Westport Rd.)	B	2	2	Blade	33	2	Blade & Wall	52.7	(40.7+ 12)	10% of 527 sf of wall area	Wall sign can increase to max if blade sign not included
	C	2	1	Blade	21	2	Blade & Wall	49.6	(37.6 + 12)	10% of 496 sf of wall area	Wall sign can increase to max if blade sign not included
	D	2	1	Blade	21	2	Blade & Wall	50.37	(38.37+ 12)	10% of 503.75 sf of wall area	Wall sign can increase to max if blade sign not included
West Façade	A	3	3	Blade & 2 Wall	49	1	Wall	12.28	na	Approved CD-AA-2, 21-00094	SF is updated to reflect the Taco Bell Cantina logo/Bell sign with letter:Cantina sign (Undermounted in vestibule)
(Broadway Blvd.)	Icon	3	1	Top Blade	12.25	1	Soffit	3.4	na	Approved CD-AA-2, 21-00094	SF is updated to reflect the Taco Bell Cantina logo/Bell sign with letter:Cantina sign (Undermounted in vestibule)
	ID	N/A	1	Corner wall	41.4	1	Top Blade	12.25	verified	Existing Bldg sign - no change	Icon Sign
	Entryway	N/A	1	Lobby Entry Wall	26.35	1	Corner Wall	41.4	verified	Existing Bldg sign - no change	Corner Sign
West (South End)	E	4	1	Wall	25	1	Lobby Entry Wall	26.35	verified	Existing Bldg sign - no change	Lobby Entry
(Broadway Blvd.)		4	1	Blade	12	2	Blade & Wall	96.1	(84.1 + 12)	10% of 961 sf of wall area	West Retail Wall on Broadway Blvd.
Archibald St.	E	5	0	Wall	0	1	Wall	162.75	162.75	10% of 1,627.5 sf of wall area	South Retail Wall on Archibald St.
<b>Total:</b>			<b>13</b>		<b>271</b>	<b>16</b>		<b>558.01</b>			

SUMMARY	
Additional Signs Requested:	3
Total Increase in SF:	287.01
% Increase SF:	51%