



**SANA LAKE**  
RECOVERY

The logo is centered within a white diamond shape that is overlaid on the background images. It features a teal silhouette of a bird in flight above three horizontal teal lines. Below the lines, the words "SANA LAKE" are written in a large, teal, serif font, and "RECOVERY" is written in a smaller, teal, sans-serif font below it.



## Table of Contents

- Why We are Here
- Introduction to Sana Lake Recovery
- New Facility
  - 5220 Troost Ave, Kansas City, MO
  - Use & Renovations
- Safety and Security
- Economic Benefits
- Testimonials

# Why Are We Here? - Underserved Community

STL vs. KC

	St. Louis	Kansas City	KC $\Delta$	% $\Delta$
DTX Beds	140	56	-84	-60%
RES Beds	752	277	-475	-63%
OP Centers	11	10	-1	-9%
Population (Metro)	2,800,000	2,100,000	(700,000)	-25%







# Introduction to Sana Lake

Unique  
Comprehensive  
System of Care for  
Better Outcomes

Personalized Care by  
Professional and  
Passionate People

Long Term Support  
for Members for Life

World-Class Facilities  
Promoting  
Engagement, Healing,  
and Safety.

Philosophy of:  
"Doing Well by Doing  
Good."

Building Recovery  
Capital for  
Recovery for Life.

FATHER





# Comprehensive System of Care

**\*Admissions occur at all points in the treatment continuum**



Sana Lake Acute Recovery Care Center



Sana Lake Behavioral Wellness Center



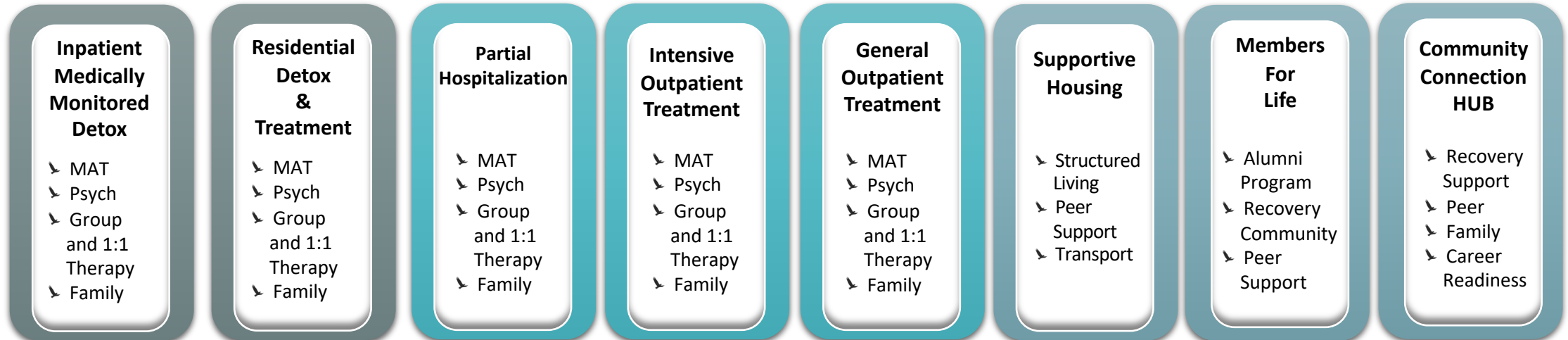
Supportive Housing Units



Members For Life



Community Connection Hub





# Behavioral Wellness Center

Kansas City

## Outpatient Services

- Partial Hospitalization Programming (PHP)
- Intensive Outpatient (IOP)
- General Outpatient (GOP)
- Supportive Housing
  - Transition from acute care to community engagement.
- Members for Life (M4L)
  - Unique continuing care model for better outcomes
  - Continuing care treatment for life
  - Events weekly including members, family and staff







# MEMBERS FOR LIFE

SANA LAKE

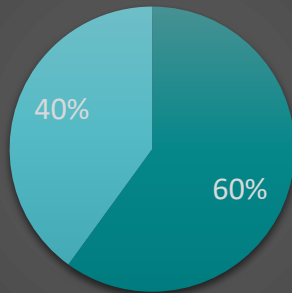
Our weekly events throughout the year offer members a chance to participate in active recovery with their peers and family.

# Demographics



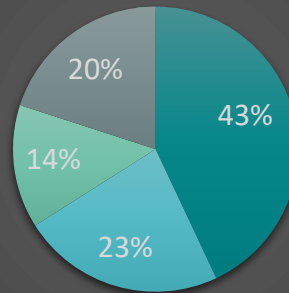
# *What our Members look like?*

### Gender



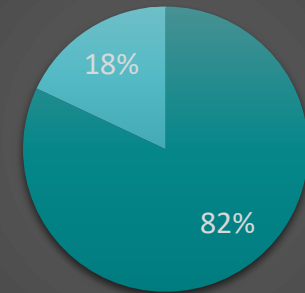
■ Male ■ Female

### Diagnosis



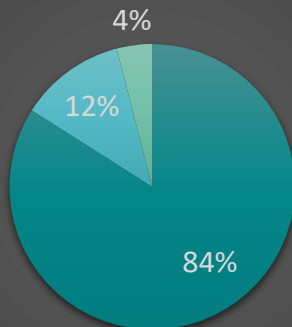
■ Alcohol ■ Opioid ■ Other (THC) ■ Mild Mental Health

### Employment



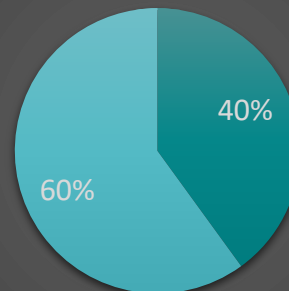
■ Employed ■ Unemployed

### Payment Type



■ Private Insurance ■ Private Pay ■ Scholarship

### Marital Status



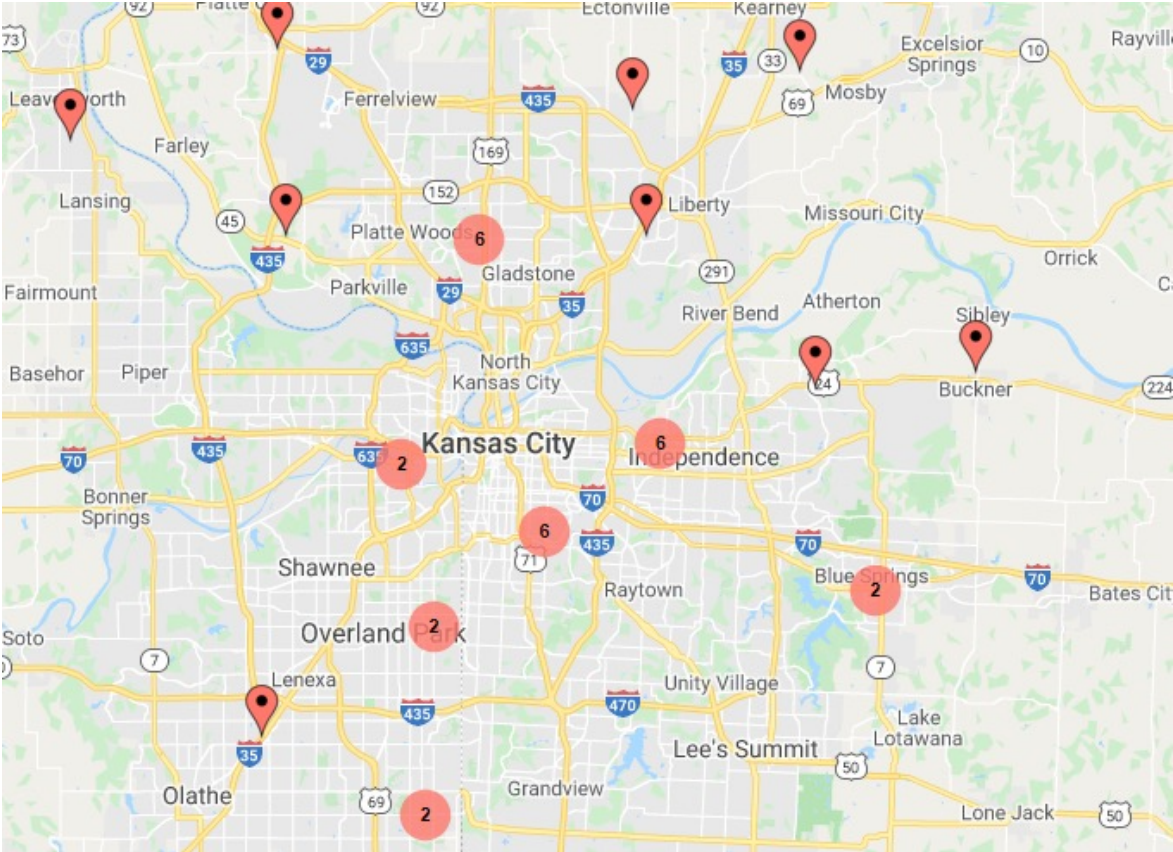
■ Married ■ Single

### Average Age



# Current KC Members Served

These charts detail the current zip codes (number signifying quantity of zip codes) served by our St. Louis Acute Recovery Center. They do not represent volume as many members have come from each area.







# New Facility

## Use

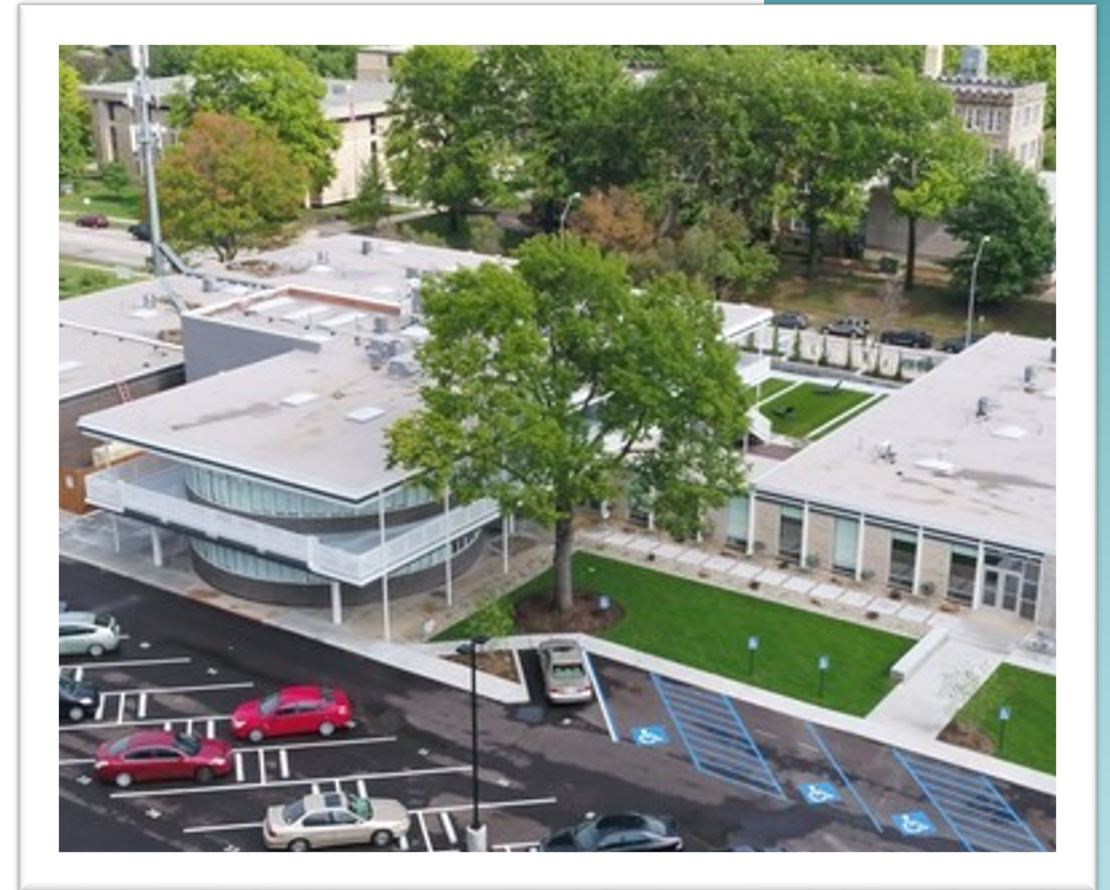
- 5220 Troost Ave, will be converted into Sana Lake Recovery's Acute Care Center in Kansas City. Members are medically monitored detox and inpatient care by 24/7 credentialed professional and passionate staff.

## Renovations - Interior

- Transform dormitory into a world class substance use and mental health disorders center for healing in the early stage of recovery. Majority of renovations are for safety and security including controlled locks on all exterior doors and others interior, cameras throughout interior and exterior, fencing, gated access.

## Renovations - Exterior

- The exterior will remain intact but refreshed and improved for better safety and security including decorative fencing and gated vehicle access.





# Safety & Security



Security Fence  
Perimeter (Decorative)



24/7 Video  
Surveillance System



24/7 Professional  
Staffing

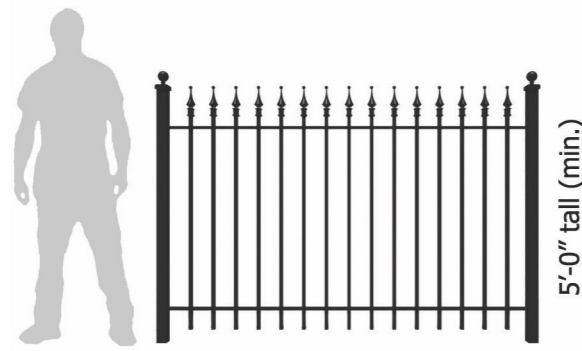


24/7 Monitoring of  
Members

# Security Fence & Perimeter

## Security Fencing and Landscaping

- Safety and security is our number one priority.
- The property will be lined with decorative perimeter fence as a physical barrier.
- The perimeter fence will include attractive landscaping as a visual barrier.
- The physical and visual barrier will beautify and provide privacy and safety for the community and our members.



**A** perimeter fence - wrought iron  
(design to match Dittmer location)



**B** landscape buffer  
arborvitae row (or sim)



**C** physical + visual barrier  
fence with landscape buffer



# Security Fence & Perimeter

## Additional Safety and Security Measures

- Magnetic lock system restricting access within the facility and outside.
- Front-line staff must accompany members when outside the facility.
- Security camera's inside and outside the facility to monitor members.
- Motion detection exterior lighting
- All staff trained in de-escalating members



# Community Benefits

## Partnerships

- We serve the community by helping those suffering from addiction and mental health and their families with transformational healing.
- Safety of our members and the community is our highest priority.
- We serve your neighbors, family members, co-workers, members of your church, bridge clubs, PTA, impaired drivers, opioid abusers, to name just a few.
- Transforming active addicts into recovery for life have a profound positive impact on the community.
- Connect with educational and other institutions to develop leading edge programming for better outcomes.
- Partner with first responders to help de-stigmatize substance use and mental health disorders in our community.

## Capital Investment

- Multimillion dollar investment to repurpose the original facilities and substantial investment in safety and security.

## Employment and Volunteers

- We will create more than 150 jobs serving members 24/7/365 as front-line member support, doctors, nurses, therapists, clinicians, peer support, facilities, housekeeping, kitchen and management staff.
- Volunteer opportunities also available.

## Integrated Services

- System of care offers a full continuum of care providing supportive housing, outpatient, medical, psychiatric, clinical and therapy services integrated with the acute care facility bringing additional investment and employment.

# Testimonials

---

Hi my name is Lisa Argurio a resident of the Dittmer community and a neighbor to Sana Lake Recovery.

At first, I was concerned about a treatment facility being in my back yard. But, since Sana Lake has been open, I have had no issues with the facility, staff or members. After having a very dear friend who lost her only child to a heroin overdose and seeing how heart breaking it has been on her life. I understand the importance to have such a facility as I don't want to see anyone go through what she has gone through.

I wish Sana Lake Recovery success as they continue to help those in need.



# Testimonials

---

Sana Lake has a nationally-recognized, evidence-based treatment model that has been extremely successful in St. Louis, so I have been enthusiastic about their recent expansion to North Kansas City and Overland Park, Kansas. The addition of Sana Lake Urgent Access Centers in both locations provide a much-needed service in the bi-state Kansas City metro for those with Substance Use Disorder (SUD) who need immediate help.

Urgent access and care, however, is just the beginning of what is a longer journey for those with SUD. Acute cases require residential care and outpatient aftercare to sustain recovery over time. While Kansas City has an array of excellent treatment programs, the demand is so high there is too often a wait list for people to get into treatment. Simply put, we still need more beds. Sana Lake's newest planned expansion for an Acute Care Center in Kansas City, Missouri will help fill this gap by providing medically-managed detox, inpatient and outpatient care – effectively completing the continuum of care and making our community a safer, healthier Kansas City.

Susan Whitmore  
Former President & CEO  
FirstCall KC  
9091 State Line Road  
Kansas City, MO 64114



# Testimonials

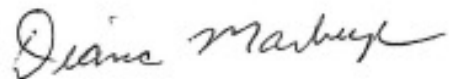
---

As the Welfare Director of the Greater St. Louis Construction Laborers' Welfare Fund, I am sending this letter in support of including Sana Lake Recovery Center into the network through UnitedHealthcare and Optum Behavioral Health.

I have personally toured the Sana Lake Recovery Center on two occasions and cannot express enough how impressed I was both times with the center and everything it entails. One of the first things that comes to mind when I think back to both previous visits is the reference to those receiving care as "members" instead of patients or residents. I feel that a member-centric model instantly removes the clinical, sterile and hospital feel that is most likely felt at other facilities. I think the "member" philosophy enforces the concept of being a member of this particular community which I am sure has a positive impact on the member's recovery.

Having Sana Lake in our network through UnitedHealthcare and Optum Behavioral Health would offer an option to our Laborers', spouses and dependents that I feel would greatly improve the potential outcomes of those receiving treatment. The services offered by this facility are innovative, evidence-based and personalized which is what I feel may be lacking in our current network offerings and again, would greatly improve the options available to the Laborers'.

Sincerely,



Diana Marburger  
Welfare Director  
Greater St. Louis Construction Laborers' Welfare Fund



# Testimonials

---

I am writing to ask you to consider making Sana Lake one of your covered facilities at a rate that makes it worthwhile. As a first responder I have first-hand knowledge of the need for such a facility to be in network for our employees. I found myself in a position of needing such a place last summer. Out of the choices that I had with UHC/UMRI chose to go out of network at pay out of pocket expenses to Sana Lake. As first responders we have different and specific needs surrounding our work. We need people that understand what we do and that our very job itself causes its share of traumas in our life. I feel that Sana Lake is a place that supports such needs. I feel that I would not be doing as well as I am now had I gone to one of the facilities within our network. Sana Lake provided the trauma support that I needed as well as preparation specifically as a first responder to be able to go back to work.

I'm also in a position to refer employees for help. I run our Peer Support Program which means that I am the contact person for employees who need help, whether personal, professional or substance related. I feel the same applies to them. I would rather refer them out of network than to one of our in-network facilities. I explain that it is going to cost them out of pocket but most employees agree that they would rather do that then go somewhere in network. One concern by most employees is privacy and the closeness of in network programs to where we work. Another concern is, again, the special needs which face us as first responders.

I am happy to say that 9 months after leaving Sana Lake I am doing very well. I know that I always have continued support from the staff there should I need further care. However; coming home I knew that I was going to have an added financial burden to figure out. I do not feel that for our first responders, who work hard to help others, that this should have to be a concern to go somewhere that focuses on our type of work.

Respectfully,

Karen O'Neill, EMT-P



# Testimonials

---

Sana Lake Recovery Center has been life changing for me. I lost my son approximately a year ago and the staff, specifically the counselors, created a treatment plan specifically for me. My plan included grief and trauma therapy as well as talk therapy that helped me really look at my core beliefs. I not only had a “soft place to land” after my son died, I also had the help I needed to stop turning to alcohol to numb the pain.

One of the defining differences that Sana adopts is every graduate is considered a member for life. I now serve on a committee in charge of creating fun events on Saturday nights for graduates of Sana to support one another. Most recovery centers provide a service and send you out the door on your own. Not Sana. Sana believes that we need one another and has created an atmosphere where this is encouraged and supported. I believe in this too and I am honored to help in this effort.

Because of Sana’s help, I am now able to return to my profession. I am a licensed professional counselor and am now healthy enough to help others. I am only one of many who are now giving back to the community. I was given a second chance and am so thankful to live in recovery. It was given to me. I want to give it to others, by living a life of love and service, a life of recovery.

- Member for Life



# Testimonials

---

My name is XXXXXXXX. I am writing this letter as a sober member of the addiction community to validate not only the importance of drug and alcohol treatment, but specifically the world class treatment available through Sana Lake. I was admitted into Sana Lake Recovery Center in Dittmer, Missouri on May 8th, 2020. Having spent many years suffering through alcohol addiction, I was mentally, physically, and spiritually bankrupt. Sana Lake provides individualized treatment for any person suffering through the misery of addiction. They provided a level of treatment that has allowed me to stay continually sober for 7 months and not only get my life back but live a life I truly never thought was possible.

I am a business professional with over 26 years in production management, well educated, well groomed, and admired as a mentor by many. I state this not as credentials for someone to be impressed. It is quite the opposite. Addiction does not discriminate. Addicts come from all types of social backgrounds, education levels, and family dynamics. Until we receive professional help; specifically, the type of professional help that Sana Lake provides, we cannot return to lives that are manageable.

Treatment is just the beginning of the process. Many people need temporary housing as a conduit to staying sober. If addicts do not have housing options, their chances of staying sober are significantly reduced. Additionally, it provides structure to individuals at a time when it is desperately needed. I personally lived in a sober living community for 6 months. Not because I did not have a place to stay, but rather because I needed the accountability of paying bills on time and staying sober.

In closing, I wish that all addicts could be fortunate enough to receive the services offered by Sana Lake. They are changing lives for the better. I am living proof of that!

- Member for Life





## Contact Us

### **Paul D. Melnuk**

Co-Founder and CEO

**Mobile:** 314-629-4080

**Email:** [pmelnuk@sanalake.com](mailto:pmelnuk@sanalake.com)

### **Lisa St. Aubyn**

COO

**Mobile:** 913-601-0678

**Email:** [lst.aubyn@sanalake.com](mailto:lst.aubyn@sanalake.com)