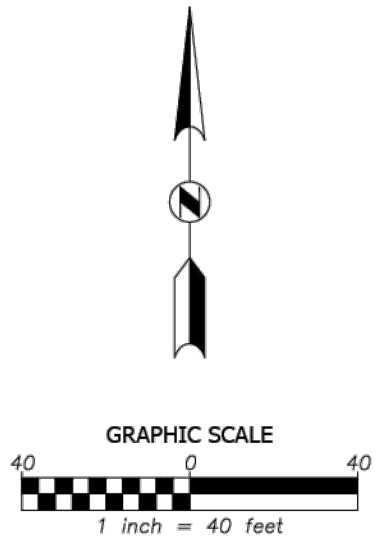
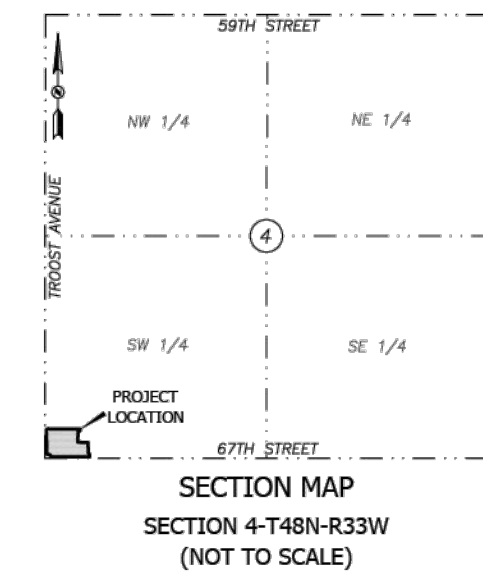




SURVEY DRAFT

BOUNDARY AND TOPOGRAPHIC SURVEY
LOTS 25, 26, 27, AND PART OF LOT 28, BROADMOOR
AND LOTS 1, 2, 3, AND 4, JEWELL'S 4TH ADDITION
SUBDIVISIONS IN THE CITY OF
KANSAS CITY, JACKSON COUNTY, MISSOURI

DRAFT



LEGEND table with symbols for Found Survey Monument, Center Line, Right-of-Way, etc.

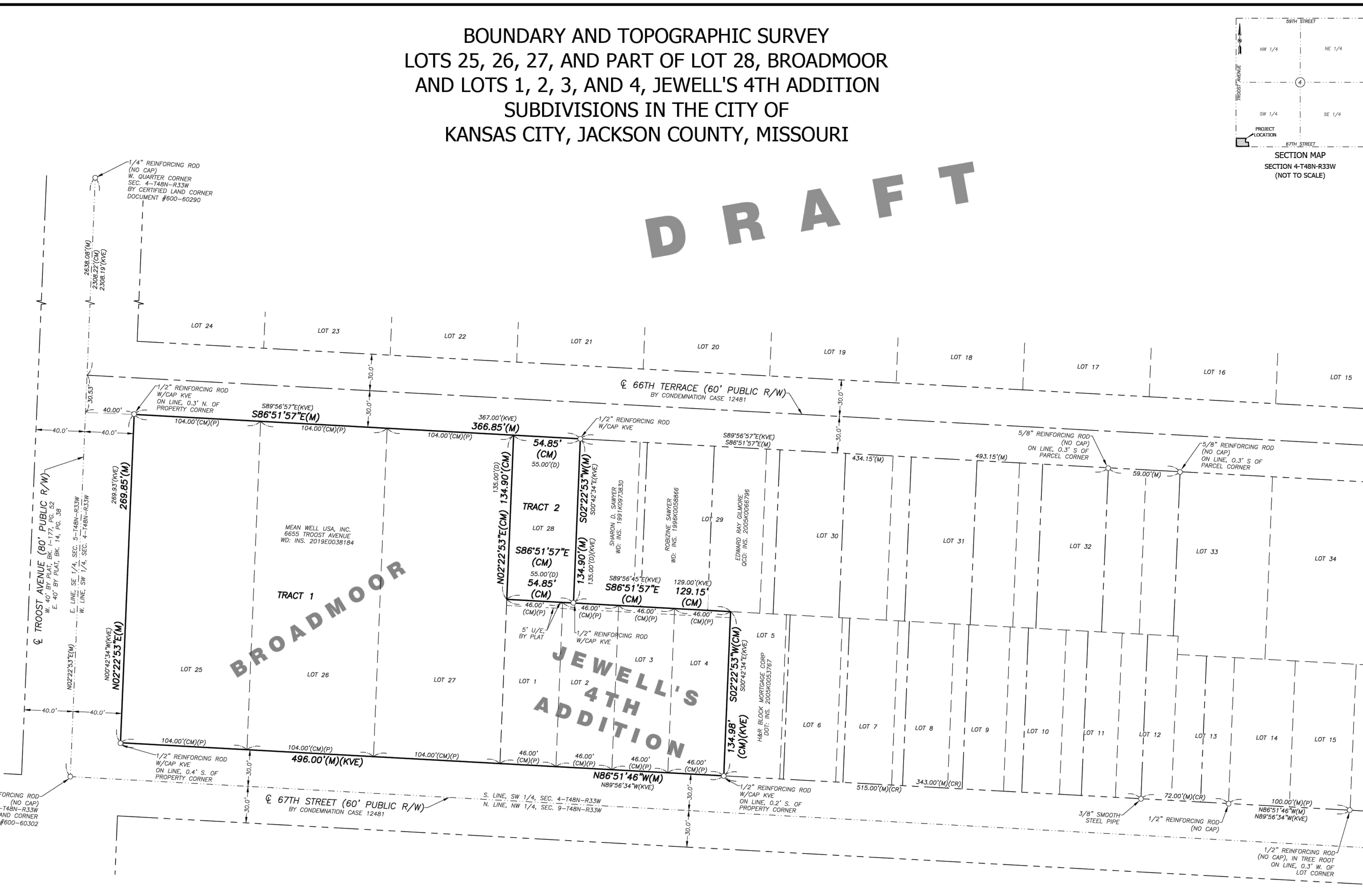


Table with columns for Description, Date, and Rev. for revision tracking.

BHC logo and contact information for Mean Well Power Solutions.

MEAN WELL POWER SOLUTIONS
6655 TROOST AVE
KANSAS CITY, MO 64131

BOUNDARY AND TOPOGRAPHIC SURVEY
LOTS 25, 26, 27, AND PART OF LOT 28, BROADMOOR
AND LOTS 1, 2, 3, AND 4, JEWELL'S 4TH ADDITION
SUBDIVISIONS IN THE CITY OF
KANSAS CITY, JACKSON COUNTY, MISSOURI



PRELIMINARY NOT FOR CONSTRUCTION

LICENSEE'S NAME, LICENSEE'S DISCIPLINE, LICENSEE'S NUMBER

CIVIL ENGINEER
BHC
7101 COLLEGE BLVD., SUITE 400
OVERLAND PARK, KS 66210
913 663 1900

LANDSCAPE ARCHITECT
CONFLUENCE
510 WALNUT STREET, SUITE 301
KANSAS CITY, MO 64106
816 531 7227

STRUCTURAL ENGINEER
STAND STRUCTURAL ENGINEERING, INC.
8234 ROBINSON ST
OVERLAND PARK, KS 66204
913 214 2169

MEP+FP ENGINEER
PKMR ENGINEERS
13300 WEST 86TH STREET
LENEXA, KS 66215
913 492 2400

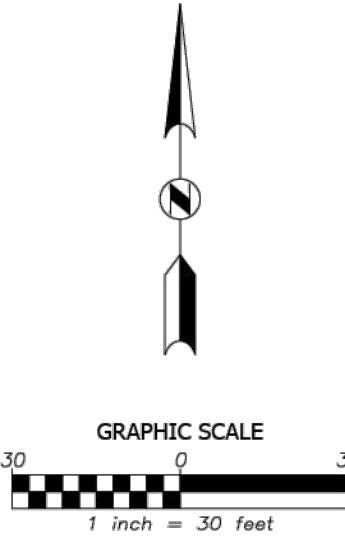
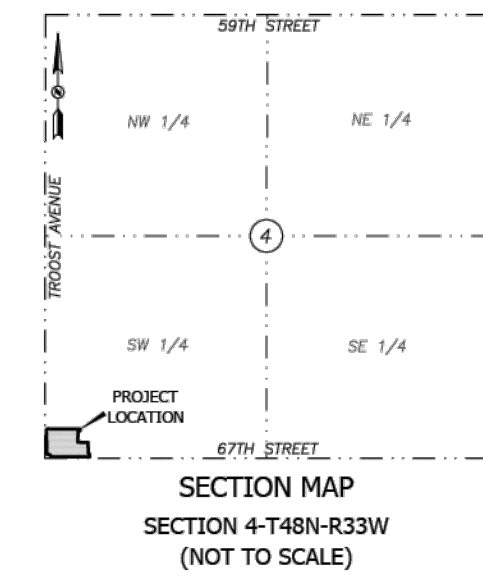
Table with columns for PROJECT NO., DEVELOPMENT PLAN SUBMITTAL, NO. REVISION, DATE.

Table with columns for Project No., Field Crew, Field Date, Drawn By, Issue Date, Sheet.

SURVEY DRAFT

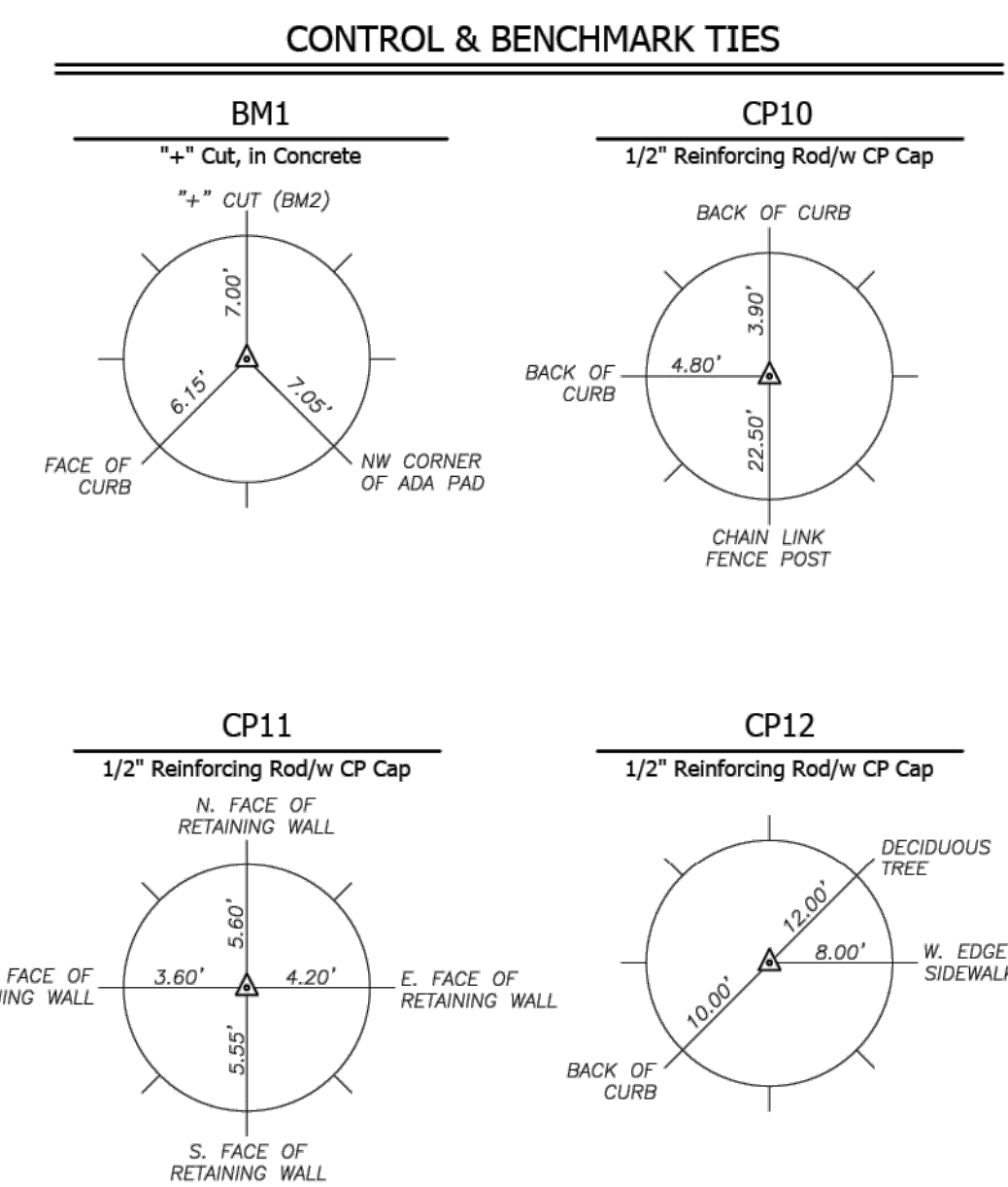
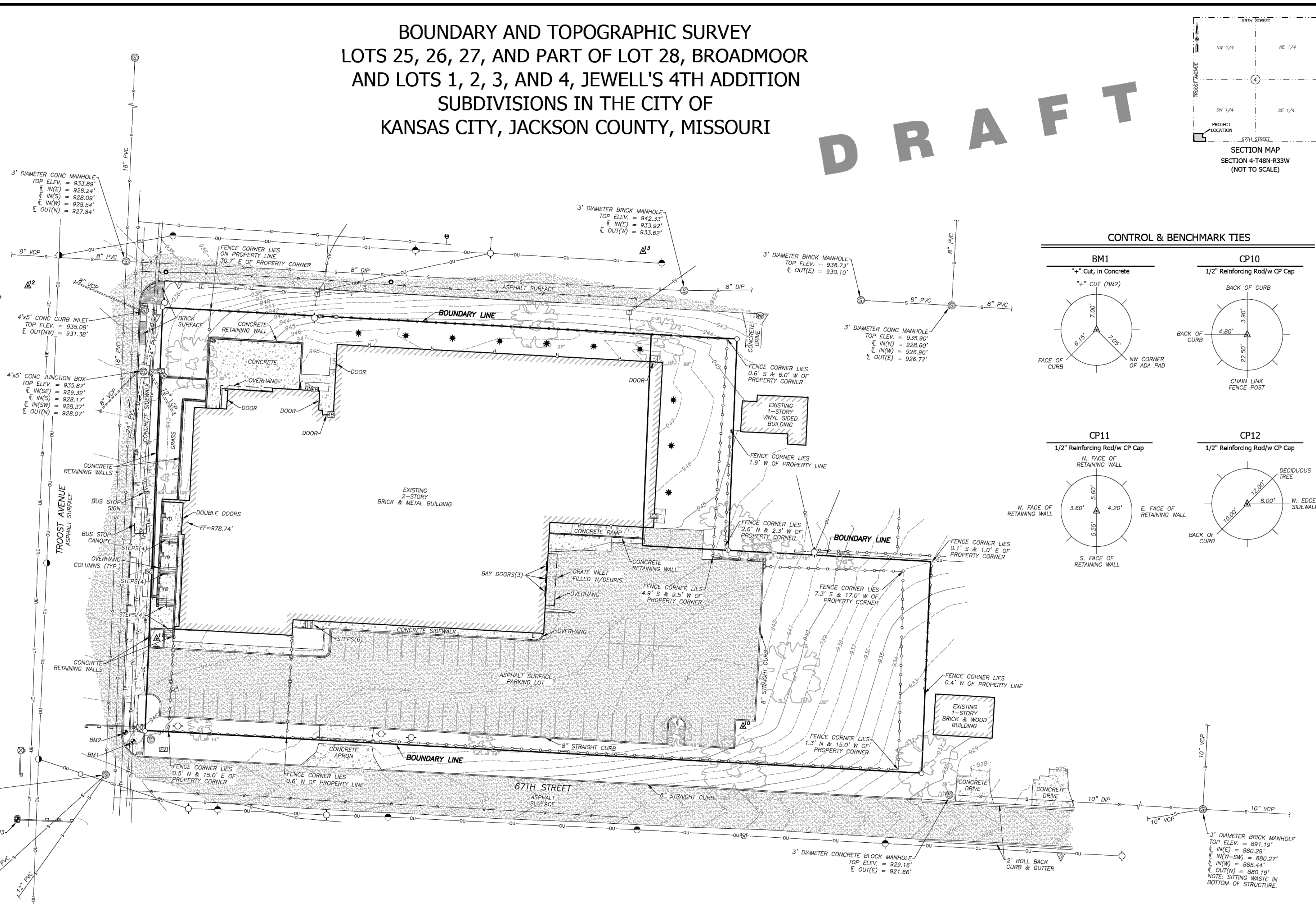
BOUNDARY AND TOPOGRAPHIC SURVEY  
 LOTS 25, 26, 27, AND PART OF LOT 28, BROADMOOR  
 AND LOTS 1, 2, 3, AND 4, JEWELL'S 4TH ADDITION  
 SUBDIVISIONS IN THE CITY OF  
 KANSAS CITY, JACKSON COUNTY, MISSOURI

DRAFT



**LEGEND**

- Found Survey Monument
- Control Point and Designation (TC is for Survey Only)
- Benchmark
- Overhead Utility Line/s
- Underground Electric Line
- Utility Pole
- Utility Pole with Transformer
- Guy Anchor
- Utility Pole w/Light
- Electric Pedestal (above ground)
- Electric Access Box (mounted)
- Yard Light
- Utility Pull Box (underground)
- Water Line
- Water Valve
- Fire Hydrant
- Water Meter
- Sprinkler Control Box
- Gas Line
- Gas Valve
- Gas Meter
- Underground Cable TV Line
- Telephone Pedestal (above ground)
- Telephone Access Box (mounted)
- Underground Fiber Optic Line Marker
- Fiber Optic Vault (underground)
- Traffic Signal Light
- Sanitary Sewer Line
- Sanitary Sewer Manhole
- Vitrified Clay Pipe
- Ductile Iron Pipe
- Polyvinyl Chloride Pipe
- Curb Inlet
- Yard Drain
- Pipe Continues-Outlet or Source
- Not Found or Not Surveyed
- Chain Link Fence
- Iron or Metal Fence
- Gate Post
- Single Pole Sign
- Metal Guard Rail or Hand Rail
- Flag Pole
- ADA Detection Pad
- Deciduous Tree and Size
- CONC Concrete
- (TYP.) Typical
- Not To Scale



Rev.	Date	Description	Checked



**BHC**  
 BHC, Inc.  
 712 State Avenue, Kansas City, MO 64101  
 Phone: (913) 371-5300

MEAN WELL POWER SOLUTIONS  
 6655 TROOST AVE  
 KANSAS CITY, MO 64131

BOUNDARY AND TOPOGRAPHIC SURVEY  
 LOTS 25, 26, 27, AND PART OF LOT 28, BROADMOOR  
 AND LOTS 1, 2, 3, AND 4, JEWELL'S 4TH ADDITION  
 SUBDIVISIONS IN THE CITY OF  
 KANSAS CITY, JACKSON COUNTY, MISSOURI

Project No: 080730  
 Field Crew: CN  
 Field Date: 2025/08/20  
 Drawn By: GJW  
 Issue Date: 2025/09/16  
 Sheet: 2 OF 2

**BENCHMARKS (NAVD83 Datum)**

BM1	"x" cut in concrete, located in the Northeast quadrant of the intersection of Troost Avenue and 67th Street, approximately 9.6' West-Southwest of a traffic signal.	Elevation: 945.08
BM2	"x" cut in concrete, located in the Northeast quadrant of the intersection of Troost Avenue and 67th Street, approximately 10' Southwest of a traffic signal.	Elevation: 944.86
BM3	City monument, 3" aluminum traffic signal, located in the Southwest quadrant of the intersection of Troost Avenue and 67th Street.	Elevation: 946.75

**GENERAL NOTES**

- Contours are shown at 1 foot intervals, were derived from a ground survey by this firm, and are based on NAVD83 datum.

**UTILITY NOTES**

- A utility locate request was generated through Missouri One-Call under ticket numbers 252240312, 252240321, 252240330, 252240331, and 252240332 on August 12, 2025 for this survey. The underground utilities shown hereon are as located along the markings created by this request. They are representational only and are in no way intended to show their exact location, nor is this information to be construed as a complete inventory of all utilities at this location. The exact location of underground features cannot be accurately, completely and reliably depicted without excavation. Where additional or more detailed information is required, client is advised that excavation may be necessary. It is the excavator's responsibility to have any utilities marked before digging.

**PROJECT CONTROL TABLE (NAD83 MISSOURI STATE PLANE, WEST ZONE, US SURVEY FOOT)**

POINT NO.	DESCRIPTION	GROUND VALUE NORTHING COORDINATE	GROUND VALUE EASTING COORDINATE	ELEV.	GRID VALUE NORTHING COORDINATE	GRID VALUE EASTING COORDINATE
10	1/2" REINFORCING ROD W/CP CAP	1033998.57	2768105.11	941.00'	1033896.88	2767832.87
11	1/2" REINFORCING ROD W/CP CAP	1034054.71	2767731.18	943.87'	1033953.01	2767458.98
12	1/2" REINFORCING ROD W/CP CAP	1034279.53	2767649.00	937.39'	1034177.80	2767376.80
13	1/2" REINFORCING ROD W/CP CAP	1034301.71	2768041.29	943.08'	1034199.99	2767769.05

NOTE: COMBINED ADJUSTED SCALE FACTOR = 0.9999916511

PRELIMINARY  
 NOT FOR  
 CONSTRUCTION

LICENSEE'S NAME  
 LICENSEE'S DISCIPLINE  
 LICENSEE'S NUMBER

**CIVIL ENGINEER**  
 BHC  
 7101 COLLEGE BLVD., SUITE 400  
 OVERLAND PARK, KS 66210  
 913 663 1900

**LANDSCAPE ARCHITECT**  
 CONFLUENCE  
 510 WALNUT STREET, SUITE 301  
 KANSAS CITY, MO 64106  
 816 531 7227

**STRUCTURAL ENGINEER**  
 STAND STRUCTURAL ENGINEERING, INC.  
 8234 ROBINSON ST  
 OVERLAND PARK, KS 66204  
 913 214 2169

**MEP+FP ENGINEER**  
 PKMR ENGINEERS  
 13300 WEST 86TH STREET  
 LENEXA, KS 66215  
 913 492 2400

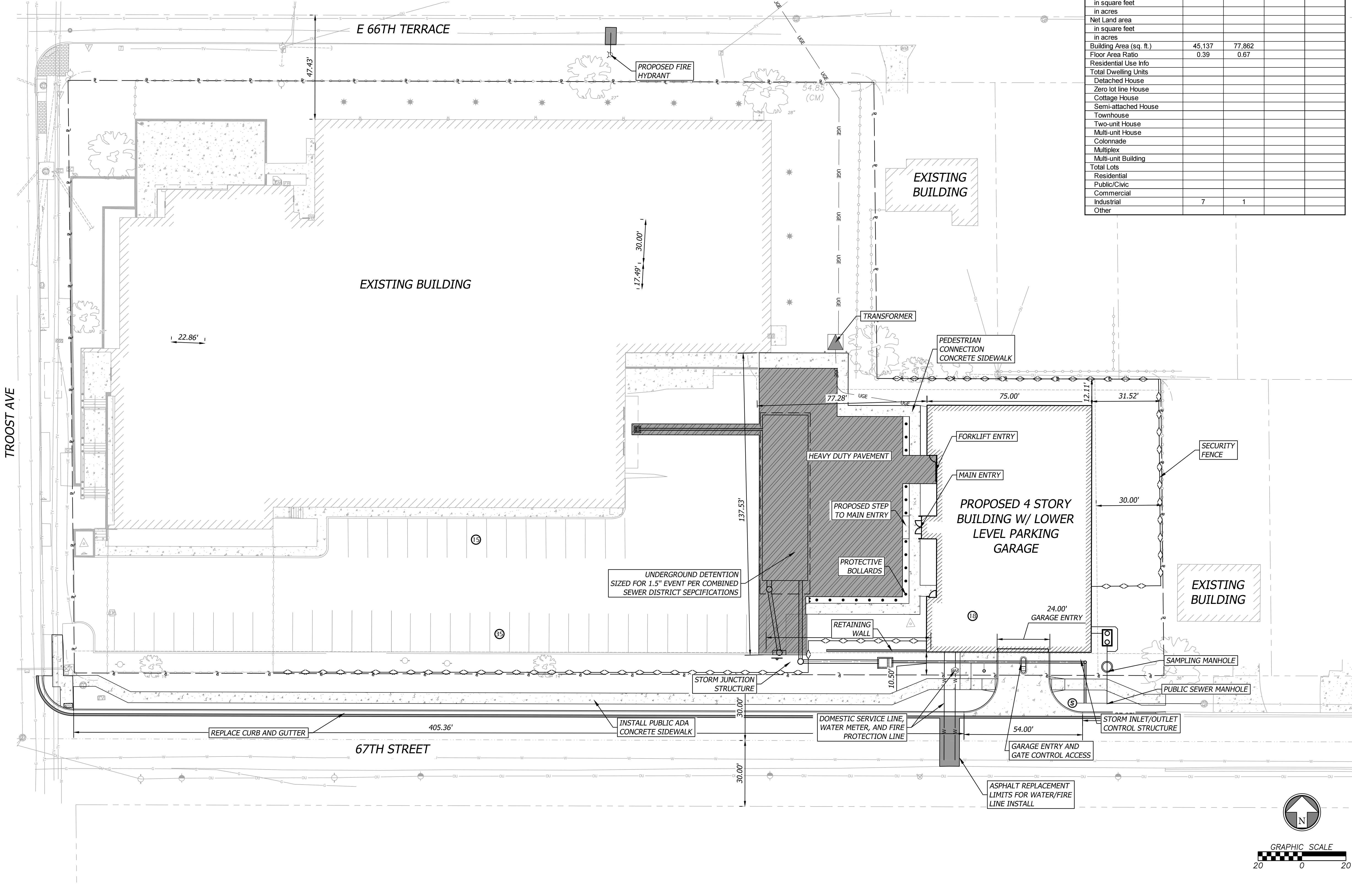
PROJECT NO.	25012.00
DEVELOPMENT PLAN SUBMITTAL	02.23.2026
NO. REVISION	DATE:

Building Data	Required	Proposed	Deviation Requested	Approved
Rear Setback	30'	30'		
Front Setback	0'	0'		
Side Setback	10'	10'		
Side Setback (abutting street)	10'	10'		
Height	45'	49'-3"		

88-420 - Parking	Vehicle Spaces		Bike Spaces		Alternatives Proposed? (See 88-420-16)
	Required	Proposed	Required	Proposed	
Proposed Use(s)					
List All Proposed Uses	28	68	3	3	
Total					

\*Parking inclusive of whole property usage

SITE DATA	Existing	Proposed	Deviation Requested	Approved
Zoning	B4-2, R5	B4-2		
Gross Land Area			No	
in square feet	116,420	116,420		
in acres	2.67	2.67		
Right-of-Way Dedication				
in square feet				
in acres				
Net Land area				
in square feet				
in acres				
Building Area (sq. ft.)	45,137	77,862		
Floor Area Ratio	0.39	0.67		
Residential Use Info				
Total Dwelling Units				
Detached House				
Zero lot line House				
Cottage House				
Semi-attached House				
Townhouse				
Two-unit House				
Multi-unit House				
Colonnade				
Multiplex				
Multi-unit Building				
Total Lots				
Residential				
Public/Civic				
Commercial				
Industrial	7	1		
Other				



**PRELIMINARY NOT FOR CONSTRUCTION**

LICENSEE'S NAME  
LICENSEE'S DISCIPLINE  
LICENSEE'S NUMBER

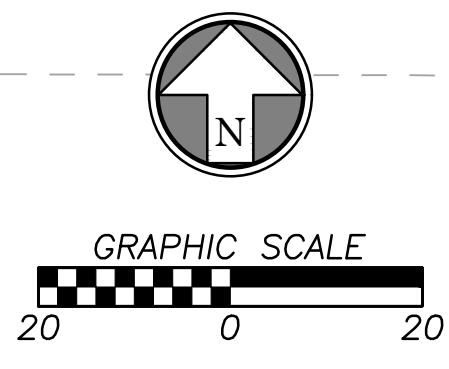
**CIVIL ENGINEER**  
BHC  
7101 COLLEGE BLVD., SUITE 400  
OVERLAND PARK, KS 66210  
913 663 1900

**LANDSCAPE ARCHITECT**  
CONFLUENCE  
510 WALNUT STREET, SUITE 301  
KANSAS CITY, MO 64106  
816 531 7227

**STRUCTURAL ENGINEER**  
STAND STRUCTURAL ENGINEERING, INC.  
8234 ROBINSON ST  
OVERLAND PARK, KS 66204  
913 214 2169

**MEP+FP ENGINEER**  
PKMR ENGINEERS  
13300 WEST 86TH STREET  
LENEXA, KS 66215  
913 492 2400

PROJECT NO. 25012.00  
DEVELOPMENT PLAN SUBMITTAL 02.23.2026  
NO. REVISION DATE:



**GRADING PLAN**

**PRELIMINARY  
 NOT FOR  
 CONSTRUCTION**

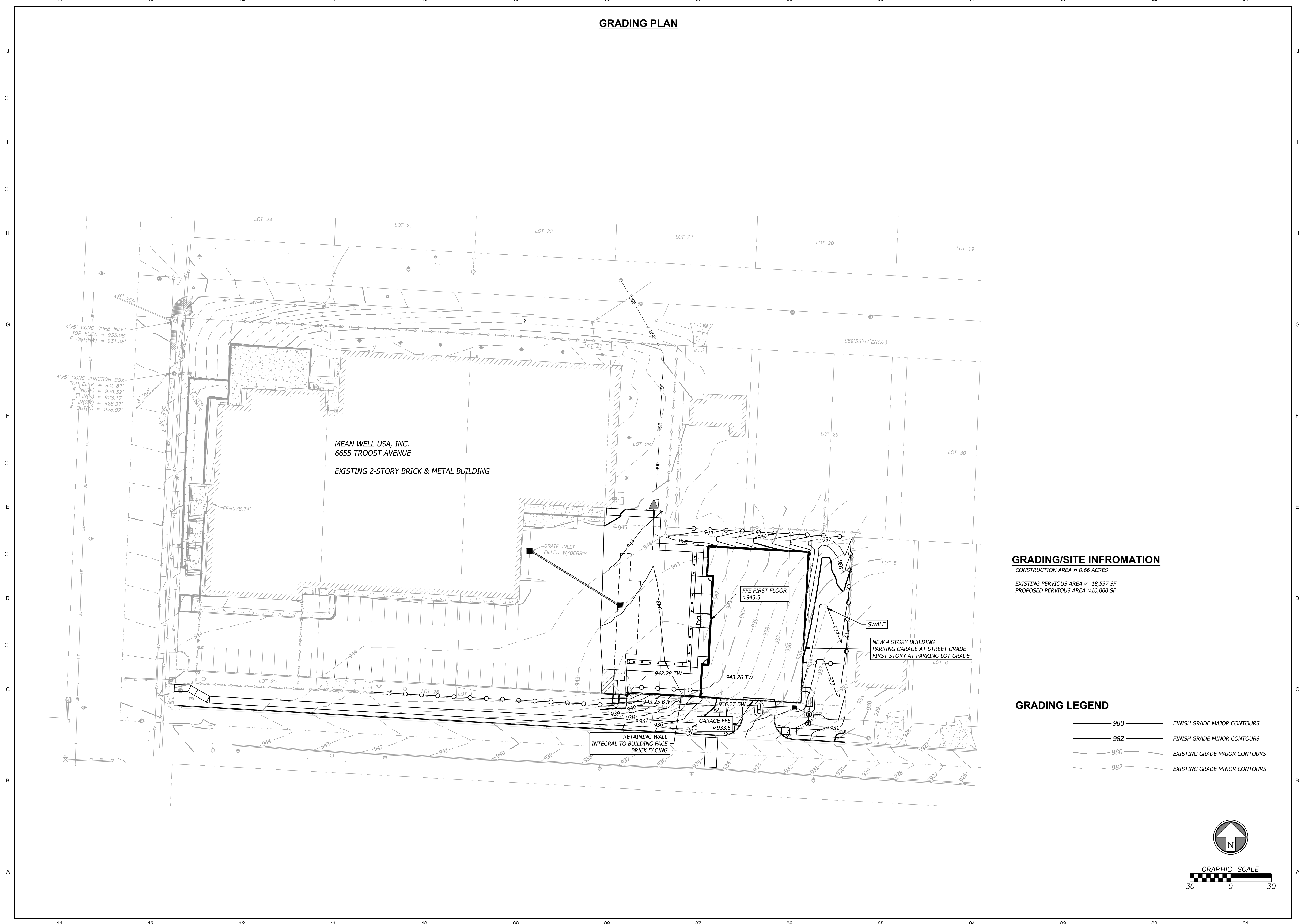
LICENSEE'S NAME  
 LICENSEE'S DISCIPLINE  
 LICENSEE'S NUMBER

**CIVIL ENGINEER**  
 BHC  
 7101 COLLEGE BLVD., SUITE 400  
 OVERLAND PARK, KS 66210  
 913 663 1900

**LANDSCAPE ARCHITECT**  
 CONFLUENCE  
 510 WALNUT STREET, SUITE 301  
 KANSAS CITY, MO 64106  
 816 531 7227

**STRUCTURAL ENGINEER**  
 STAND STRUCTURAL ENGINEERING, INC.  
 824 ROBINSON ST  
 OVERLAND PARK, KS 66204  
 913 214 2169

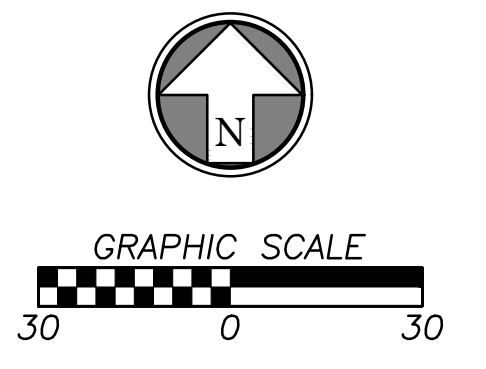
**MEP+FP ENGINEER**  
 PKMR ENGINEERS  
 13300 WEST 86TH STREET  
 LENEXA, KS 66215  
 913 492 2400



**GRADING/SITE INFORMATION**  
 CONSTRUCTION AREA ≈ 0.66 ACRES  
 EXISTING PERVIOUS AREA ≈ 18,537 SF  
 PROPOSED PERVIOUS AREA ≈ 10,000 SF

**GRADING LEGEND**

	980	FINISH GRADE MAJOR CONTOURS
	982	FINISH GRADE MINOR CONTOURS
	980	EXISTING GRADE MAJOR CONTOURS
	982	EXISTING GRADE MINOR CONTOURS



PROJECT NO.	25012.00
DEVELOPMENT PLAN SUBMITTAL	02.23.2026
NO. REVISION	DATE:

UTILITY PLAN



architecture + design  
 220 West 18th Street, Suite 100  
 Kansas City, Missouri 64108  
 p. 816 300 0300  
 helixus.com

PRELIMINARY  
 NOT FOR  
 CONSTRUCTION

LICENSEE'S NAME  
 LICENSEE'S DISCIPLINE  
 LICENSEE'S NUMBER

CIVIL ENGINEER  
 BHC  
 7101 COLLEGE BLVD., SUITE 400  
 OVERLAND PARK, KS 66210  
 913 663 1900

LANDSCAPE ARCHITECT  
 CONFLUENCE  
 510 WALNUT STREET, SUITE 301  
 KANSAS CITY, MO 64106  
 816 531 7227

STRUCTURAL ENGINEER  
 STAND STRUCTURAL ENGINEERING, INC.  
 8234 ROBINSON ST  
 OVERLAND PARK, KS 66204  
 913 214 2169

MEP+FP ENGINEER  
 PKMR ENGINEERS  
 13300 WEST 86TH STREET  
 LENEXA, KS 66215  
 913 492 2400

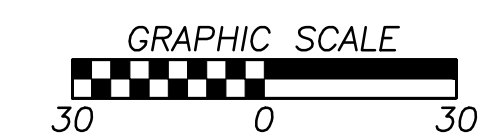
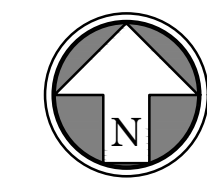
MEAN WELL USA, INC.  
 6655 TROOST AVENUE  
 EXISTING 2-STORY BRICK & METAL BUILDING

GRADING/SITE INFORMATION

DISTURBED AREA ≈ 0.66 ACRES  
 EXISTING PERVIOUS AREA ≈ 18,537 SF  
 PROPOSED PERVIOUS AREA ≈ 10,000 SF

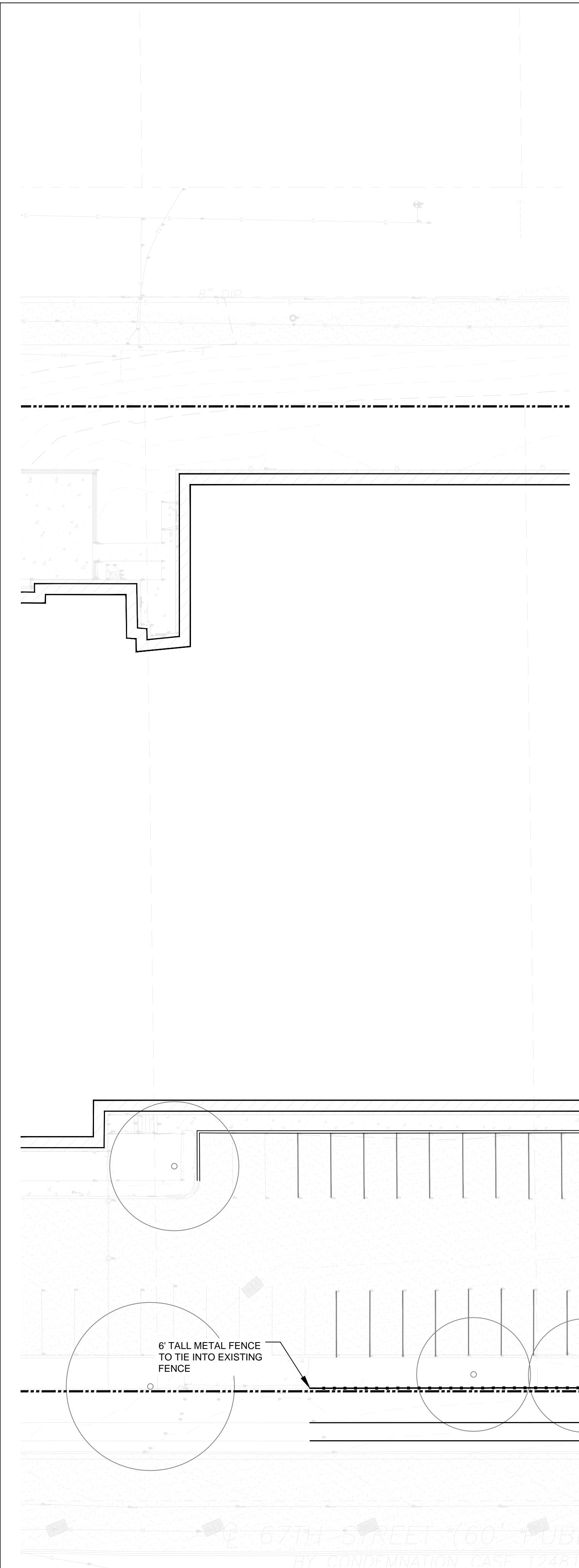
GRADING LEGEND

- 980 — FINISH GRADE MAJOR CONTOURS
- 982 — FINISH GRADE MINOR CONTOURS
- - - 980 - - - EXISTING GRADE MAJOR CONTOURS
- - - 982 - - - EXISTING GRADE MINOR CONTOURS



PROJECT NO. 25012.00  
 DEVELOPMENT PLAN SUBMITTAL 02.23.2026  
 NO. REVISION DATE:





### REZONING DEVELOPMENT PLAN - PLANT SCHEDULE

KEY	QTY.	BOTANICAL NAME	COMMON NAME	SIZE	ROOT	SPACING/REMARKS
<b>CANOPY TREES</b>						
SM	4	<i>Acer saccharum</i>	SUGAR MAPLE	3" CAL.	B&B	SPECIMAN QUALITY
GT	1	<i>Gleditsia triacanthos f. inermis</i>	THORNLESS COMMON HONEYLOCUST	4'-5' HT.	B&B	TO BE SELECTED AT NURSERY BY OWNER
UP	7	<i>Ulmus parvifolia</i>	LACEBARK ELM	3" CAL.	B&B	SPECIMAN QUALITY
<b>ORNAMENTAL TREES</b>						
AC	7	<i>Amelanchier canadensis</i>	SERVICEBERRY	8'-9' HT.	B&B	SPECIMAN QUALITY
SC	7	<i>Malus x 'Shotizam'</i>	SHOWTIME CRABAPPLE	8'-9' HT.	B&B	SPECIMAN QUALITY
MS	9	<i>Malus x 'Spring Snow'</i>	SPRING SNOW CRAB	8'-9' HT.	B&B	SPECIMAN QUALITY
<b>EVERGREEN SHRUBS</b>						
BS	101	<i>Buxus sempervirens 'Dee Runk'</i>	BOXWOOD 'DEE RUNK'	3'-0" HT.	B&B	3' AT PLANTING HEIGHT
<b>MIX A</b>						
<b>GRASSES</b>						
BC	133	<i>Bouteloua curtipendula</i>	SIDE OATS	#1	CONT.	18" TRIANGULAR SPACING
BG	131	<i>Bouteloua gracilis 'Blonde Ambition'</i>	BLUE GRAMA	#1	CONT.	18" TRIANGULAR SPACING
CL	130	<i>Chasmanthium latifolium</i>	NORTHERN SEA OATS	#1	CONT.	18" TRIANGULAR SPACING
PV	130	<i>Panicum Virgatum 'Half Pint'</i>	SWITCHGRASS 'HALF PINT'	#1	CONT.	18" TRIANGULAR SPACING
SH	129	<i>Sporobolus heterolepis</i>	PRAIRIE DROPSEED	#1	CONT.	18" TRIANGULAR SPACING
SS	129	<i>Schizachyrium scoparium</i>	LITTLE BLUESTEM	#1	CONT.	18" TRIANGULAR SPACING
<b>PERENNIALS</b>						
EC	161	<i>Echinacea purpurea 'Magnus Superior'</i>	MAGNUS SUPERIOR PURPLE CONEFLOWER	#1	CONT.	18" TRIANGULAR SPACING
AR	160	<i>Agastache rupestris 'Sunset Hyssop'</i>	GIANT HYSSOP	#1	CONT.	18" TRIANGULAR SPACING
LS	160	<i>Liatris spicata</i>	BLAZING STAR	#1	CONT.	18" TRIANGULAR SPACING
MB	159	<i>Monarda bradburiana</i>	EASTERN BEEBALM	#1	CONT.	18" TRIANGULAR SPACING

### PLANTING GENERAL NOTES

- SEED ALL AREAS WITH TALL TURF FESCUE WITHIN CONTRACT LIMITS, NOT COVERED BY PAVING, BUILDINGS, OR PLANTING BEDS, UNLESS OTHERWISE NOTED.
- THE CONTRACTOR SHALL SHOW PROOF OF PROCUREMENT, SOURCES, QUANTITIES AND VARIETIES FOR ALL SHRUBS, PERENNIALS, ORNAMENTAL GRASSES, AND ANNUALS WITHIN 21 DAYS FOLLOWING THE AWARD OF CONTRACT. TIMELY PROCUREMENT OF ALL PLANT MATERIAL IS ESSENTIAL TO THE SUCCESSFUL COMPLETION AND ACCEPTANCE OF THE PROJECT.
- SUBSTITUTIONS SHALL ONLY BE ALLOWED WHEN THE CONTRACTOR HAS EXHAUSTED ALL SOURCES FOR THE SPECIFIED MATERIAL, AND HAS PROVEN THAT THE SPECIFIED MATERIAL IS NOT AVAILABLE. THE CONTRACTOR MUST PROVIDE NAME AND VARIETY OF SUBSTITUTION TO THE LANDSCAPE ARCHITECT FOR APPROVAL PRIOR TO TAGGING OR PLANTING. SUBSTITUTIONS SHALL BE NEAREST EQUIVALENT SIZE OF VARIETY OF PLANT HAVING SAME ESSENTIAL CHARACTERISTICS.
- ALL PLANT MATERIAL SHALL BE NURSERY GROWN, SOUND, HEALTHY, VIGOROUS AND FREE FROM INSECTS, DISEASE AND INJURIES, WITH HABIT OF GROWTH THAT IS NORMAL FOR THE SPECIES. SIZES SHALL BE EQUAL TO OR EXCEEDING SIZES INDICATED ON THE PLANT LIST. KIND, SIZE AND QUALITY OF PLANT MATERIAL SHALL CONFORM TO THE AMERICAN STANDARD FOR NURSERY STOCK (ANSI Z60.1), MOST RECENT EDITION.
- STAKE OR PLACE ALL PLANTS IN FIELD AS INDICATED ON THE DRAWINGS OR AS DIRECTED BY THE LANDSCAPE ARCHITECT FOR APPROVAL PRIOR TO PLANTING.
- PLANT FIVE TREES FOR LANDSCAPE ARCHITECT APPROVAL PRIOR TO PLANTING THE REMAINING TREES ON SITE. DEMONSTRATION SHOULD ILLUSTRATE A COMPREHENSIVE UNDERSTANDING OF INFORMATION INCLUDED IN PLANTING DETAILS AND SPECIFICATIONS.
- PROVIDE A MINIMUM OF 48 HOURS NOTICE FOR APPROVAL OF PLANT LAYOUT AND SAMPLE TREE PLANTINGS.
- THE CONTRACTOR SHALL REPORT SUBSURFACE SOIL OR DRAINAGE PROBLEMS TO THE LANDSCAPE ARCHITECT PRIOR TO PLANTING.
- CONTRACTOR SHALL PLACE SHREDDED BARK MULCH AROUND ALL TREES AND IN ALL PLANTING BEDS TO A DEPTH OF 9" EXCEPT IN AREAS WITHIN 10' OF ALL PEDESTRIAN ACCESS POINTS IN PROXIMITY TO BUILT STRUCTURES. THESE PEDESTRIAN ACCESS PLANTING AREAS SHALL BE REPLACED WITH NONCOMBUSTIBLE GROUND COVER, SEE FINAL PLANTING DETAILS FOR MORE INFORMATION.
- SEE SPECIFICATIONS FOR PLANT MAINTENANCE AND WARRANTY REQUIREMENTS.
- ALL TURF AREAS TO HAVE 4" MINIMUM DEPTH OF TOPSOIL. ALL LANDSCAPE BED AREAS TO HAVE A MINIMUM OF 18" OF PLANTING SOIL. THE PLANTING BED BETWEEN THE SIDEWALK AND DRIVE TO HAVE 2" OF PLANTING SOIL DEPTH.

### LEGEND

- LANDSCAPE BED; RE: PLANTING SCHEDULE
- TURF (SEED - TALL TURF FESCUE)
- 6' METAL FENCE  
TOTAL: 500 LF



**PRELIMINARY  
NOT FOR  
CONSTRUCTION**

LICENSEE'S NAME  
LICENSEE'S DISCIPLINE  
LICENSEE'S NUMBER

**CIVIL ENGINEER**  
BHC  
7101 COLLEGE BLVD., SUITE 400  
OVERLAND PARK, KS 66210  
913 663 1900

**LANDSCAPE ARCHITECT**  
CONFLUENCE  
510 WALNUT STREET, SUITE 301  
KANSAS CITY, MO 64106  
816 531 7227

**STRUCTURAL ENGINEER**  
STAND STRUCTURAL ENGINEERING, INC.  
8234 ROBINSON ST  
OVERLAND PARK, KS 66204  
913 214 2169

**MEP-FP ENGINEER**  
PKMR ENGINEERS  
13300 WEST 98TH STREET  
LENEXA, KS 66215  
913 492 2400

**MEAN WELL**  
6655 TROOST AVENUE,  
KANSAS CITY, MO 64131

PROJECT NO.	25012.00
REZONING DEVELOPMENT PLAN	04.23.2026
NO. REVISION	DATE:


DRAWN BY: AV      CHECKED BY: ME

### LANDSCAPE PLAN

# L100

Autodesk Docu/25012 - Mean Well - New Bldg/2012 - Mean Well - 20151021\_ARCH\_L100.rvt

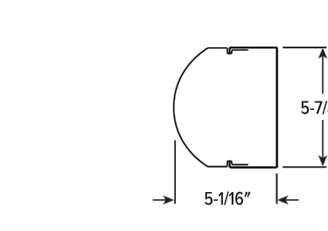








# SLF LED Surface or Wall Mount Light



### FEATURES

- Sleek design for direct lighting in stairwells and hallways
- IK10 rated for demanding environments
- High performance up to 142 lm/W
- Optional end or side-mount occupancy sensors provide added energy efficiency
- Attractive, high-impact frosted acrylic lens
- Heavy-duty 16-gauge C.R.S. spot-welded housing
- Multiple dimming protocols available
- Optional tamper-resistant screws for vandalism-prone areas
- Optional anti-microbial finish suppresses the spread of dangerous micro-organisms, mold, and bacterial growth
- Wireless in-fixture control solutions available
- Made Right Here® in the USA

### SPECIFICATIONS

- HOUSING – 16-gauge C.R.S.
- SHIELDING – Frosted high-impact acrylic lens, 100" thick
- FINISH – 92% minimum average reflective white polyester powder coat bonded to phosphate-free, multi-stage pretreated metal. All parts painted after fabrication to facilitate installation, increase efficiency, and inhibit corrosion.
- ELECTRICAL – High-quality mid-power LED board. Rated for 50,000 hours at 70% lumen maintenance (L70). 25°C maximum ambient operating temperature. 50/60 Hz constant current driver.
- MOUNTING – Wall and surface mount.
- LISTINGS –
  - cULus certified as luminaire suitable for dry or damp locations.
  - IK10 rated
  - DesignLights Consortium qualified product. Not all versions of this product may be DLC qualified, see the DLC Qualified Products List at [www.designlights.org/DLC](http://www.designlights.org/DLC)
  - Build America, Buy America (BABA) and Buy American Act (BAA) compliant. Request certification at [www.buyusa.gov](http://www.buyusa.gov)
- WARRANTY – 5-year limited warranty, see [www.hew.com/warranty](http://www.hew.com/warranty)

### ORDERING EXAMPLE: SLF - 4 - L98/835 - HIA - OPTIONS - CONTROL/DIM - UNV

SERIES	LENGTH	LUMENS <sup>(1)</sup>	CRI	CCT	SHIELDING
SLF	2.2'	2	8.80	27 2700K	HIA
	4.4'	4	8.80	30 3000K	HIA/TP
		L13 1,300lm		35 3500K	Frosted high-impact acrylic with tamper-resistant screws. (1)
		L26 2,600lm		40 4000K	Frosted high-impact acrylic with tamper-resistant screws. (1)
		L45 4,500lm		50 5000K	
		L26 2,600lm		LS2 5,200lm	
		L98 9,800lm			

### OPTIONS

- EM/ROW 10-watt emergency battery (1)
- EM/ROWLP Low-profile 10-watt emergency battery (1)
- PSBR/120 Single-circuit bottom-mounted pull switch on right (1)
- PSBL/120 Single-circuit bottom-mounted pull switch on left (1)
- AMW Anti-microbial white finish

### CONTROL (1)

- Click [HERE](#) for linear control and sensor options.
- Click [HERE](#) for industrial control and sensor options.
- None

### DRIVER

- See page 3 for ADDITIONAL DRIVER OPTIONS.
- DIM Driver with external 0-10V dimming wires
- DRV Driver without external dimming wires
- DIM1 1% Driver with external 0-10V dimming wires
- SD40 Step-dimming driver, 40% light output (1)
- SD50 Step-dimming driver, 50% light output (1)

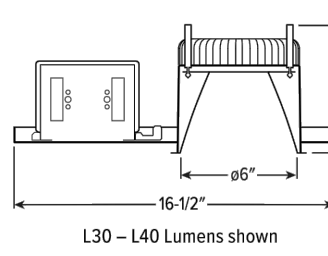
### ACCESSORIES

- TPSN-B TOOL #8, tamper-resistant snake eyes tool (1)

### NOTES

- <sup>1</sup> Lumen output based on 80 CRI/3500K CCT. Actual performance may vary +/- 5%, see page 2 for FIXTURE PERFORMANCE DATA. Additional lumen packages available, see Options.
- <sup>2</sup> Tamper-resistant (TPSN-B) tool is required with HIA/TP option, must be ordered separately. See Accessories.
- <sup>3</sup> See page 3 for SENSOR PLACEMENT DETAILS.
- <sup>4</sup> 2' only
- <sup>5</sup> Specify in increments of 100 nominal lumens. Option must be specified with next higher lumen package.
- <sup>6</sup> 120V only.
- <sup>7</sup> 120V only.
- <sup>8</sup> When specified with occupancy sensor option, one leg of the driver will be tied to the sensor by default.
- <sup>9</sup> When specified with occupancy sensor option, one leg of the driver will be tied to the sensor by default.
- <sup>10</sup> Not available with EM batteries.
- <sup>11</sup> Required with HIA/TP Shielding. Tamper-resistant tool must be ordered separately. Please specify quantity required per project.

# 6DR LED 6" Downlight – Round



### NEW CONSTRUCTION AND REMODEL

### ORDERING EXAMPLE: 6DR - TL - L20/R35 - OPTIONS - CONTROL/DIM - UNV - OW - OF - CS - TRIM OPTIONS - N - F1

SERIES	LUMENS <sup>(1)</sup>	CRI	CCT	OPTIONS	CONTROL	DRIVER	VOLTAGE
6DR - TL	Single CCT or TW	8.80	27 2700K	See page 3 for EMERGENCY BATTERY OPTIONS	Click <a href="#">HERE</a> for control options.	See page 6 for ADDITIONAL DRIVER OPTIONS	UNV 120-277V
TrimLock	L10 1,000lm	8.80	30 3000K	See page 3 for APERTURE ADAPTOR ORDERING INFO	None	DIM Dimming driver, 0-10V	347 347V (1)
	L15 1,500lm	8.80	35 3500K	See page 3 for APERTURE ADAPTOR ORDERING INFO	None	DIM1 1% Dimming driver, 0-10V	
	L20 2,000lm	8.80	40 4000K	See page 3 for APERTURE ADAPTOR ORDERING INFO	None	DIM LINE Driver with line-voltage-dimming wires (1)	
	L30 3,000lm	8.80	50 5000K	See page 3 for APERTURE ADAPTOR ORDERING INFO	None		
	L40 4,000lm	8.80	50 5000K	See page 3 for APERTURE ADAPTOR ORDERING INFO	None		
	Single CCT only		2700K-5000K	See page 3 for APERTURE ADAPTOR ORDERING INFO	None		
	L50 5,000lm			See page 3 for APERTURE ADAPTOR ORDERING INFO	None		
	L60 6,000lm			See page 3 for APERTURE ADAPTOR ORDERING INFO	None		
	L70 7,000lm			See page 3 for APERTURE ADAPTOR ORDERING INFO	None		
	L80 8,000lm			See page 3 for APERTURE ADAPTOR ORDERING INFO	None		
	L100 10,000lm			See page 3 for APERTURE ADAPTOR ORDERING INFO	None		
	L120 12,000lm			See page 3 for APERTURE ADAPTOR ORDERING INFO	None		

### TRIM (1)

TRIM TYPE	DISTRIBUTION	FLANGE TYPE	REFLECTOR FINISH	Lens trim types	TRIM OPTIONS								
O Open reflector	See page 2 for BEAM ANGLE.	OF 1/2" Standard flange	Open trim types CS Clear semi-specular anodize WH White surface powder coat GD Gold anodize CG Champagne gold anodize PW Pewter anodize SPC Clear specular anodize RG Rose gold anodize WH White texture powder coat BL Black texture powder coat	CS Clear semi-specular powder coat WH White surface powder coat BL Black texture powder coat	MWT Smooth matte white trim flange (1) <tr> <td>F Open reflector with polycarbonate frosted top diffuser (1) <tr> <td>L Flush lens <tr> <td>R Angled lens (1) <tr> <td>A Angled lens (1) <tr> <td>S Non-conductive flush lens for shower applications (1) <tr> <td>N Open pan for new construction <tr> <td>N IC-rated enclosure for new construction (1) <tr> <td>R Remodel kit (1) </td></tr></td></tr></td></tr></td></tr></td></tr></td></tr></td></tr></td></tr>	F Open reflector with polycarbonate frosted top diffuser (1) <tr> <td>L Flush lens <tr> <td>R Angled lens (1) <tr> <td>A Angled lens (1) <tr> <td>S Non-conductive flush lens for shower applications (1) <tr> <td>N Open pan for new construction <tr> <td>N IC-rated enclosure for new construction (1) <tr> <td>R Remodel kit (1) </td></tr></td></tr></td></tr></td></tr></td></tr></td></tr></td></tr>	L Flush lens <tr> <td>R Angled lens (1) <tr> <td>A Angled lens (1) <tr> <td>S Non-conductive flush lens for shower applications (1) <tr> <td>N Open pan for new construction <tr> <td>N IC-rated enclosure for new construction (1) <tr> <td>R Remodel kit (1) </td></tr></td></tr></td></tr></td></tr></td></tr></td></tr>	R Angled lens (1) <tr> <td>A Angled lens (1) <tr> <td>S Non-conductive flush lens for shower applications (1) <tr> <td>N Open pan for new construction <tr> <td>N IC-rated enclosure for new construction (1) <tr> <td>R Remodel kit (1) </td></tr></td></tr></td></tr></td></tr></td></tr>	A Angled lens (1) <tr> <td>S Non-conductive flush lens for shower applications (1) <tr> <td>N Open pan for new construction <tr> <td>N IC-rated enclosure for new construction (1) <tr> <td>R Remodel kit (1) </td></tr></td></tr></td></tr></td></tr>	S Non-conductive flush lens for shower applications (1) <tr> <td>N Open pan for new construction <tr> <td>N IC-rated enclosure for new construction (1) <tr> <td>R Remodel kit (1) </td></tr></td></tr></td></tr>	N Open pan for new construction <tr> <td>N IC-rated enclosure for new construction (1) <tr> <td>R Remodel kit (1) </td></tr></td></tr>	N IC-rated enclosure for new construction (1) <tr> <td>R Remodel kit (1) </td></tr>	R Remodel kit (1)
F Open reflector with polycarbonate frosted top diffuser (1) <tr> <td>L Flush lens <tr> <td>R Angled lens (1) <tr> <td>A Angled lens (1) <tr> <td>S Non-conductive flush lens for shower applications (1) <tr> <td>N Open pan for new construction <tr> <td>N IC-rated enclosure for new construction (1) <tr> <td>R Remodel kit (1) </td></tr></td></tr></td></tr></td></tr></td></tr></td></tr></td></tr>	L Flush lens <tr> <td>R Angled lens (1) <tr> <td>A Angled lens (1) <tr> <td>S Non-conductive flush lens for shower applications (1) <tr> <td>N Open pan for new construction <tr> <td>N IC-rated enclosure for new construction (1) <tr> <td>R Remodel kit (1) </td></tr></td></tr></td></tr></td></tr></td></tr></td></tr>	R Angled lens (1) <tr> <td>A Angled lens (1) <tr> <td>S Non-conductive flush lens for shower applications (1) <tr> <td>N Open pan for new construction <tr> <td>N IC-rated enclosure for new construction (1) <tr> <td>R Remodel kit (1) </td></tr></td></tr></td></tr></td></tr></td></tr>	A Angled lens (1) <tr> <td>S Non-conductive flush lens for shower applications (1) <tr> <td>N Open pan for new construction <tr> <td>N IC-rated enclosure for new construction (1) <tr> <td>R Remodel kit (1) </td></tr></td></tr></td></tr></td></tr>	S Non-conductive flush lens for shower applications (1) <tr> <td>N Open pan for new construction <tr> <td>N IC-rated enclosure for new construction (1) <tr> <td>R Remodel kit (1) </td></tr></td></tr></td></tr>	N Open pan for new construction <tr> <td>N IC-rated enclosure for new construction (1) <tr> <td>R Remodel kit (1) </td></tr></td></tr>	N IC-rated enclosure for new construction (1) <tr> <td>R Remodel kit (1) </td></tr>	R Remodel kit (1)						
L Flush lens <tr> <td>R Angled lens (1) <tr> <td>A Angled lens (1) <tr> <td>S Non-conductive flush lens for shower applications (1) <tr> <td>N Open pan for new construction <tr> <td>N IC-rated enclosure for new construction (1) <tr> <td>R Remodel kit (1) </td></tr></td></tr></td></tr></td></tr></td></tr></td></tr>	R Angled lens (1) <tr> <td>A Angled lens (1) <tr> <td>S Non-conductive flush lens for shower applications (1) <tr> <td>N Open pan for new construction <tr> <td>N IC-rated enclosure for new construction (1) <tr> <td>R Remodel kit (1) </td></tr></td></tr></td></tr></td></tr></td></tr>	A Angled lens (1) <tr> <td>S Non-conductive flush lens for shower applications (1) <tr> <td>N Open pan for new construction <tr> <td>N IC-rated enclosure for new construction (1) <tr> <td>R Remodel kit (1) </td></tr></td></tr></td></tr></td></tr>	S Non-conductive flush lens for shower applications (1) <tr> <td>N Open pan for new construction <tr> <td>N IC-rated enclosure for new construction (1) <tr> <td>R Remodel kit (1) </td></tr></td></tr></td></tr>	N Open pan for new construction <tr> <td>N IC-rated enclosure for new construction (1) <tr> <td>R Remodel kit (1) </td></tr></td></tr>	N IC-rated enclosure for new construction (1) <tr> <td>R Remodel kit (1) </td></tr>	R Remodel kit (1)							
R Angled lens (1) <tr> <td>A Angled lens (1) <tr> <td>S Non-conductive flush lens for shower applications (1) <tr> <td>N Open pan for new construction <tr> <td>N IC-rated enclosure for new construction (1) <tr> <td>R Remodel kit (1) </td></tr></td></tr></td></tr></td></tr></td></tr>	A Angled lens (1) <tr> <td>S Non-conductive flush lens for shower applications (1) <tr> <td>N Open pan for new construction <tr> <td>N IC-rated enclosure for new construction (1) <tr> <td>R Remodel kit (1) </td></tr></td></tr></td></tr></td></tr>	S Non-conductive flush lens for shower applications (1) <tr> <td>N Open pan for new construction <tr> <td>N IC-rated enclosure for new construction (1) <tr> <td>R Remodel kit (1) </td></tr></td></tr></td></tr>	N Open pan for new construction <tr> <td>N IC-rated enclosure for new construction (1) <tr> <td>R Remodel kit (1) </td></tr></td></tr>	N IC-rated enclosure for new construction (1) <tr> <td>R Remodel kit (1) </td></tr>	R Remodel kit (1)								
A Angled lens (1) <tr> <td>S Non-conductive flush lens for shower applications (1) <tr> <td>N Open pan for new construction <tr> <td>N IC-rated enclosure for new construction (1) <tr> <td>R Remodel kit (1) </td></tr></td></tr></td></tr></td></tr>	S Non-conductive flush lens for shower applications (1) <tr> <td>N Open pan for new construction <tr> <td>N IC-rated enclosure for new construction (1) <tr> <td>R Remodel kit (1) </td></tr></td></tr></td></tr>	N Open pan for new construction <tr> <td>N IC-rated enclosure for new construction (1) <tr> <td>R Remodel kit (1) </td></tr></td></tr>	N IC-rated enclosure for new construction (1) <tr> <td>R Remodel kit (1) </td></tr>	R Remodel kit (1)									
S Non-conductive flush lens for shower applications (1) <tr> <td>N Open pan for new construction <tr> <td>N IC-rated enclosure for new construction (1) <tr> <td>R Remodel kit (1) </td></tr></td></tr></td></tr>	N Open pan for new construction <tr> <td>N IC-rated enclosure for new construction (1) <tr> <td>R Remodel kit (1) </td></tr></td></tr>	N IC-rated enclosure for new construction (1) <tr> <td>R Remodel kit (1) </td></tr>	R Remodel kit (1)										
N Open pan for new construction <tr> <td>N IC-rated enclosure for new construction (1) <tr> <td>R Remodel kit (1) </td></tr></td></tr>	N IC-rated enclosure for new construction (1) <tr> <td>R Remodel kit (1) </td></tr>	R Remodel kit (1)											
N IC-rated enclosure for new construction (1) <tr> <td>R Remodel kit (1) </td></tr>	R Remodel kit (1)												
R Remodel kit (1)													

### MOUNTING

- MOUNTING TYPE (1)
- N Open pan for new construction
- N IC-rated enclosure for new construction (1)
- R Remodel kit (1)

### NOTES

- <sup>1</sup> Lumen output based on 80 CRI/3500K CCT. Actual performance may vary +/- 5%, see page 2 for FIXTURE PERFORMANCE DATA. Additional lumen packages available, see Options.
- <sup>2</sup> See Options.
- <sup>3</sup> Not available with EM/ROW emergency batteries.
- <sup>4</sup> Not available with tunable white.
- <sup>5</sup> Not available with mounting Type 5 Trim Type, ATH, or WET/CC Options. Painted white. Other colors available, consult factory. See page 4 for SLOPED CEILING ADAPTOR DETAILS.
- <sup>6</sup> Mounting Type required.
- <sup>7</sup> May be required for 347V, see product builder at [www.hew.com/product-builder](http://www.hew.com/product-builder)
- <sup>8</sup> Specify in increments of 100 nominal lumens. Option must be specified with next higher lumen package.
- <sup>9</sup> L15 min to L40 max lumen packages. Not available with tunable white.
- <sup>10</sup> Not available with Tunable White, EM batteries, or DMX Drivers.
- <sup>11</sup> Trim ships separately.
- <sup>12</sup> L50 lumen package max.
- <sup>13</sup> Available with TW distribution only.
- <sup>14</sup> Distribution, OF Flange Type and WH Reflector Finish only. Standard with AD, F1 and WET/CC Trim Options.
- <sup>15</sup> Not available with lumen stops L50 and higher when specified with L or F Trim Type.
- <sup>16</sup> Not available with lumen stops L50 and higher when specified with L or F Trim Type only.
- <sup>17</sup> For use with mud-in-plaster construction only, supplied with mud flange installation kit. See page 4 for FLANGE TYPE DETAILS. Not available with ATH or F Options.
- <sup>18</sup> Not available with WH Reflector Finish, L or S Trim Types.
- <sup>19</sup> L and R trim types only.
- <sup>20</sup> Not available with O or F Trim Types. W and WW Distributions only.
- <sup>21</sup> Not available with O or F Trim Types. W and WW Distributions only.
- <sup>22</sup> L50 lumen package max with O Trim Type.
- <sup>23</sup> WH and BL Reflector Finishes only. Not available with S Trim Type.
- <sup>24</sup> Mounting hardware required (R and only), ordered separately, see MOUNTING HARDWARE ordering info. See page 5 for MOUNTING TYPE DETAILS.
- <sup>25</sup> Additional mounting hardware options available. See page 5 for MOUNTING HARDWARE DETAILS.
- <sup>26</sup> L50 lumen package max. Not available with EM batteries.
- <sup>27</sup> Also used in new construction sheetrock ceilings. Pan-less installation.
- <sup>28</sup> N and I Mounting types only. I Mounting requires external brackets.
- <sup>29</sup> N Mounting Type only.
- <sup>30</sup> N Mounting Type only.

