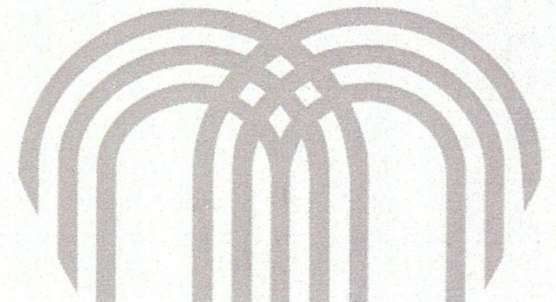


# Ordinance 251055

Knightsbridge Business Center Condo Plat Vacation  
CD-ROW-2025-00035

December 16, 2025

Neighborhood Planning and Development Committee











KANSAS CITY  
MISSOURI

City Planning and Development

3

# Location

**Address:**  
5300 Longview Rd

**Council District:**  
5<sup>th</sup>

**Area Plan:**  
Red Bridge







## Looking North From Longview Road





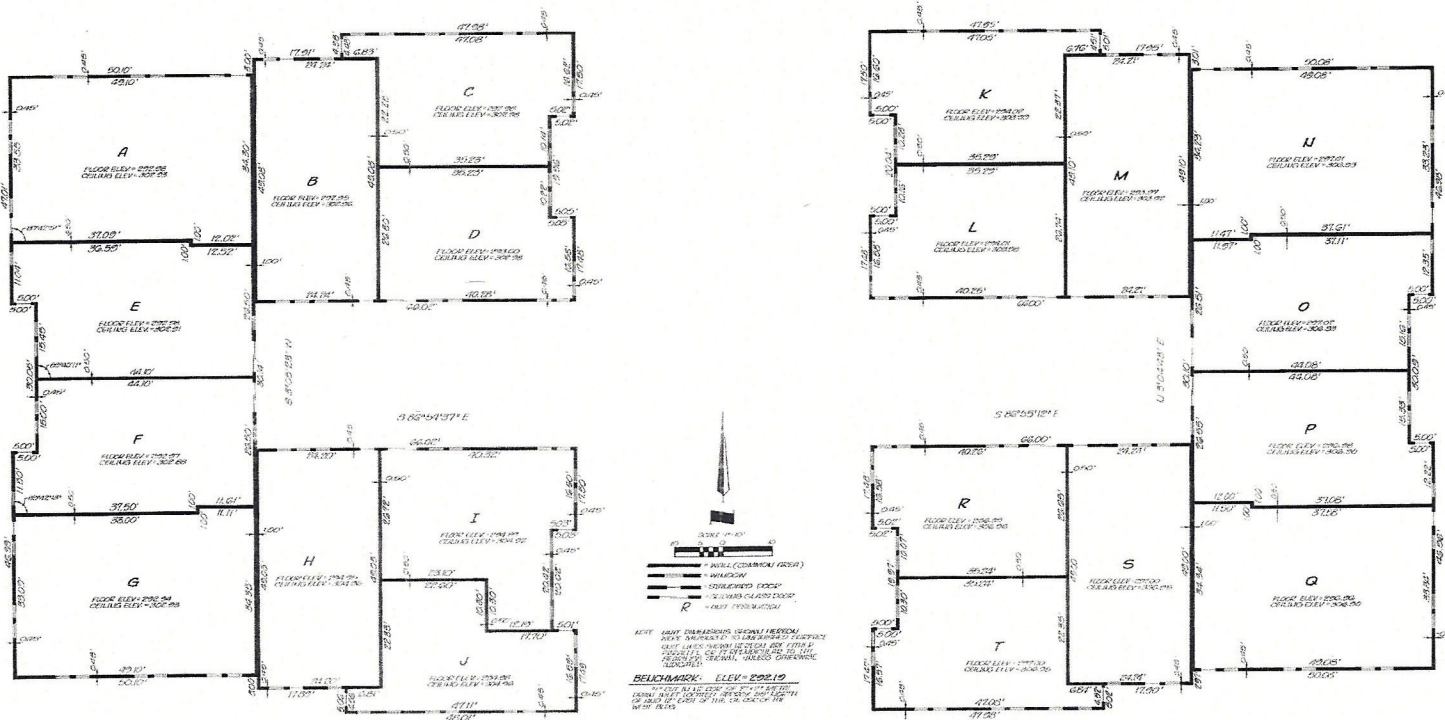
# Condominium Plat

- Subdivided into 20 units by Ordinance 63329 on November 23, 1988
- Applicant owns all units
- Vacation of Condominium Plat consolidates all units back into 1 parcel.
- Approval of this vacation does not permit any additional uses or approve any modifications to the buildings.





# Condominium Plat







# **City Plan Commission Recommendation Ordinance 251055**

## **Condominium Plat Vacation**

Case No. CD-ROW-2025-00035    **Approval**

Knightsbridge Business Center Condo Plat Vacation





**KANSAS CITY  
MISSOURI**

City Planning and Development

8

