

2023



RebuildKC

NEIGHBORHOOD GRANTS



KANSAS CITY
Neighborhoods



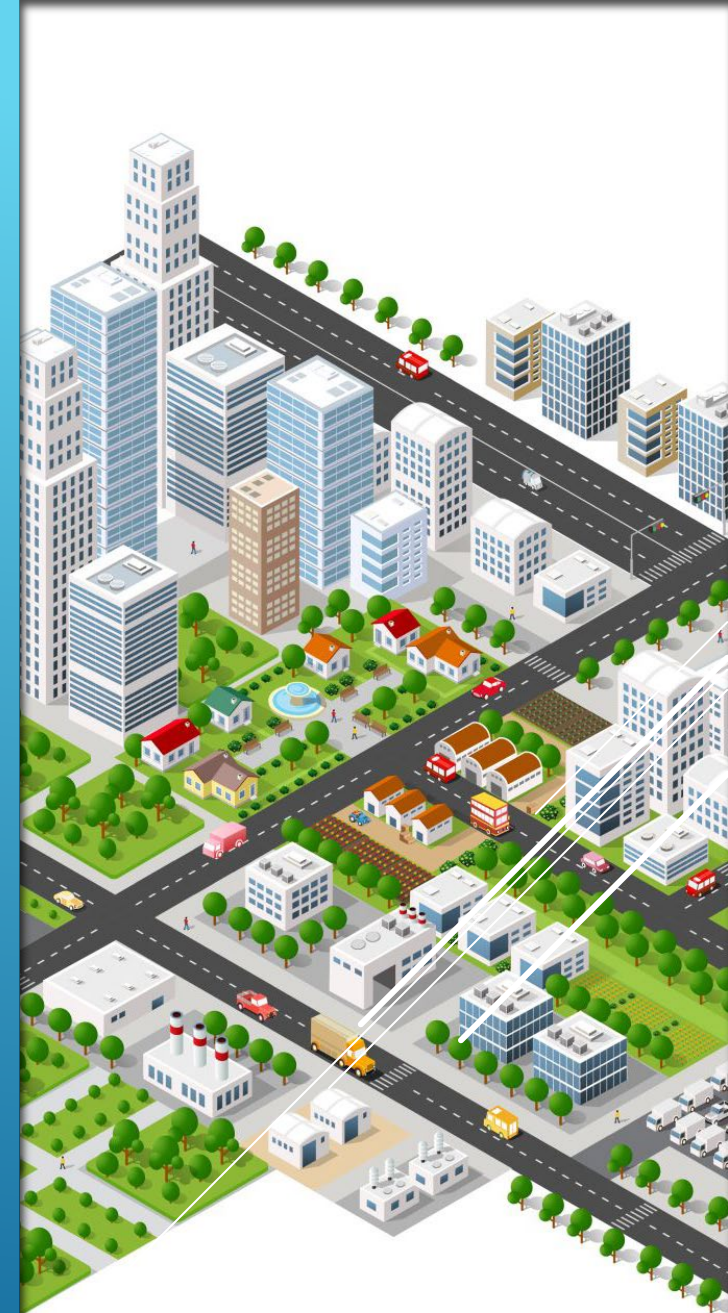
- ▶ **\$2,953,154 FY24 budget**
- ▶ **1,413,368 from Round 1**

- ▶ **Application deadline: 7/30**

**259 Applications
submitted, totaling
over \$70M**



PHASE 1: ELIGIBILITY REVIEW



APPLICANTS

Applications by Category

Affordable Housing/Housing Assistance:	27
Assistance to Impacted Non-Profits:	18
Community Violence Interventions:	14
Healthy Childhood Environments:	15
Housing Services for Unhoused Persons:	13
Job Training:	20
Strong Healthy Communities:	85

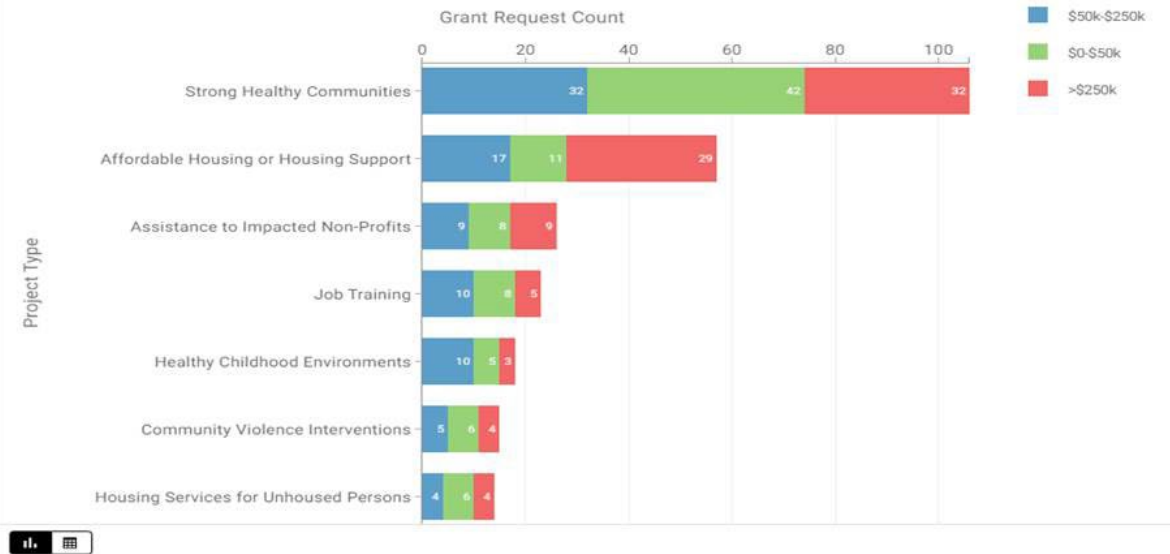
APPLICANTS

Applications by Council District

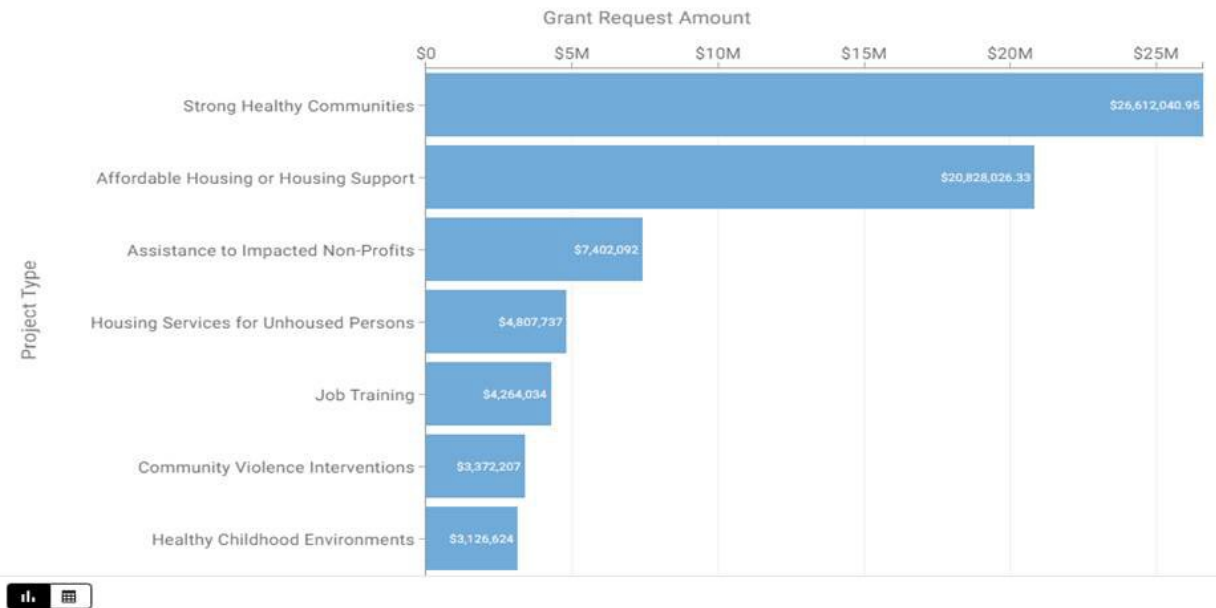
District 1:	3
District 2:	4
District 3:	48
District 4:	31
District 5:	25
District 6:	7
Multiple:	74

PHASE 2: ANALYSIS

Project Type: Grant Requests by Amount



Project Type: Request Amounts



AFFORDABLE HOUSING OR HOUSING SUPPORT



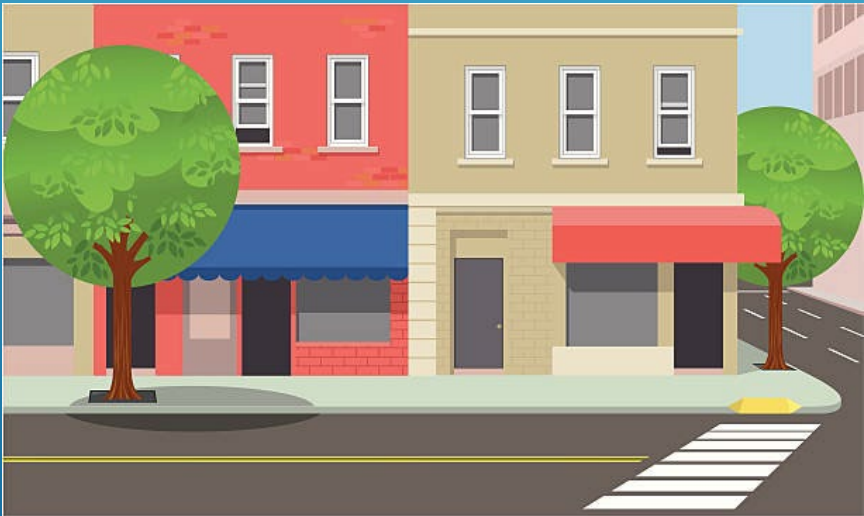
▶ Recommending 2 projects in this category

▶ Recommended funding not to exceed \$312,000

Project Name	Category	Goal Of Project/Program
Legal Aid's Economic Development Unit	Affordable Housing or Housing Support	Blight Remediation
Garfield East Senior Cottages	Affordable Housing or Housing Support	Affordable Housing

ASSISTANCE TO IMPACTED NON-PROFITS

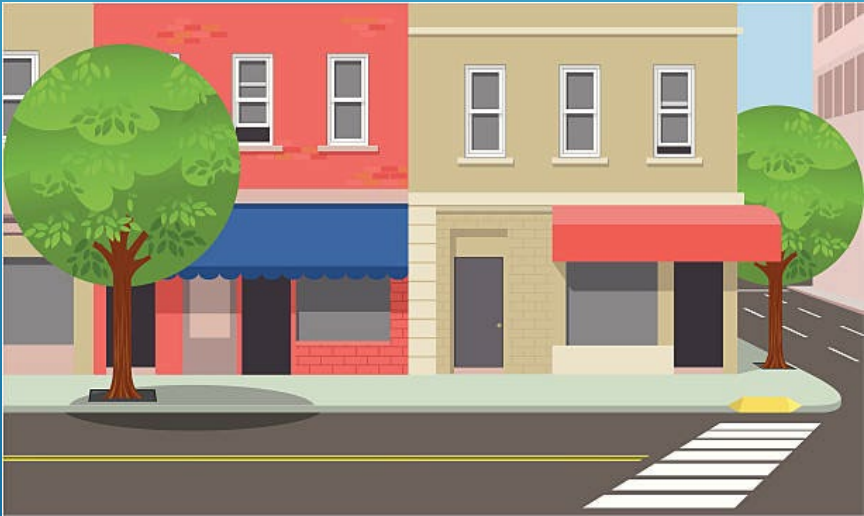
Recommending 8
projects in this category



Recommend funding
not to exceed \$435,458

Project Name	Category	Goal Of Project/Program
Health Care Access for KCMO Northland Residents	Assistance to Impacted Non-Profits	Public Health
Building Bridges, Breaking Barriers: A Comprehensive Needs Assessment for Kansas City's LGBTQ+ Population	Assistance to Impacted Non-Profits	Educational Programming
The Don Bosco Senior Center Updates	Assistance to Impacted Non-Profits	Infrastructure
Strings Sprouts Resurgence - Post Pandemic	Assistance to Impacted Non-Profits	Youth Services
Expanded Programming Project 2024	Assistance to Impacted Non-Profits	Educational Programming
College Courses for High School Students	Assistance to Impacted Non-Profits	Job Training
The Putterer's Place	Assistance to Impacted Non-Profits	Blight Remediation
KC Pet Resource Center Facility Improvements	Assistance to Impacted Non-Profits	Other Built Infrastructure

COMMUNITY VIOLENCE INTERVENTIONS

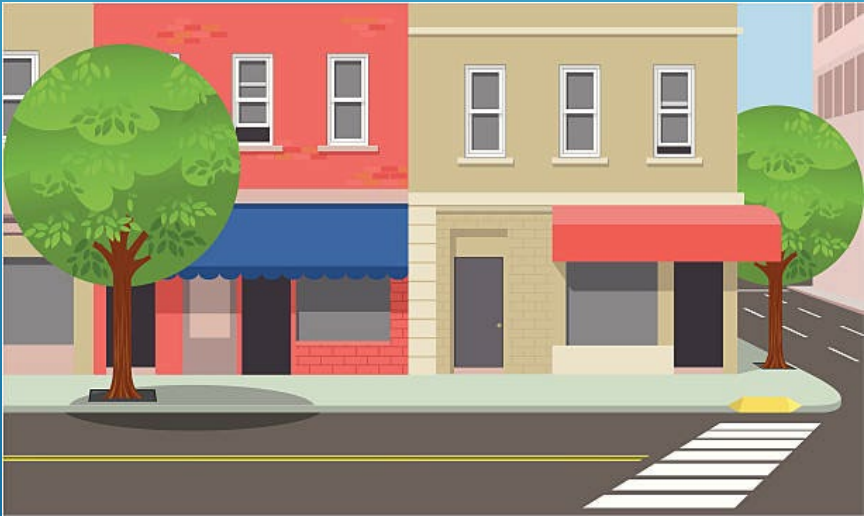


Recommending 6
projects in this category

Recommend funding
not to exceed \$394,999

Project Name	Category	Goal Of Project/Program
Youth Development –Violence Prevention and Intervention	Community Violence Interventions	Youth Services
Westside Violence Intervention & Prevention	Community Violence Interventions	Youth Services
Truman Road Safety Initiative	Community Violence Interventions	Blight Remediation
Restorative Justice	Community Violence Interventions	Youth Services
Marlborough 360 - Violence Prevention	Community Violence Interventions	Public Health
Youth Ambassadors Violence Prevention	Community Violence Interventions	Educational Programming

HEALTHY CHILDHOOD ENVIRONMENTS

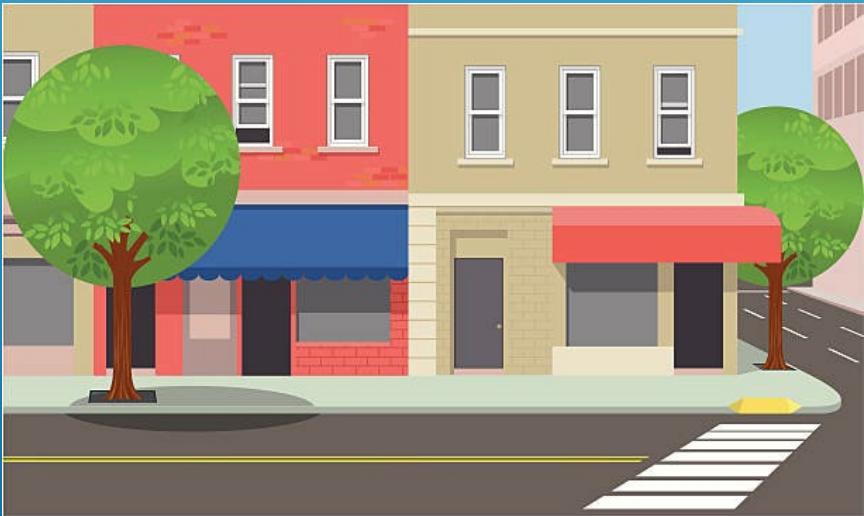


Recommending 4
projects in this category

Recommend funding
not to exceed \$376,500

Project Name	Category	Goal Of Project/Program
Order of Solomon Childcare	Healthy Childhood Environments	Child Services
EarlystART - Child & Family Development Centers	Healthy Childhood Environments	Educational Programming
Delta Athenaeum - Community Park & Historic Renovations for Youth/Recreational Space	Healthy Childhood Environments	Neighborhood Capacity
Financial Literacy Program for Youth, Girls, and Adults	Healthy Childhood Environments	Educational Programming

HOUSING FOR UNHOUSED PERSONS



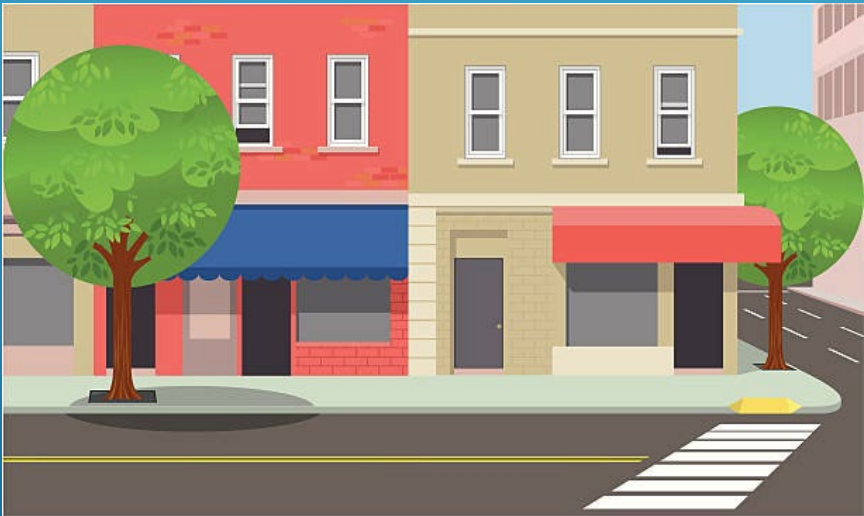
Recommending 4
projects in this category

Recommend funding
not to exceed \$214,900

Project Name	Category	Goal Of Project/Program
Women-only Day and Overnight Shelter	Housing Services for Unhoused Persons	Transitional Housing
Just Homes Model Duplex Pre-Development	Housing Services for Unhoused Persons	Unhoused Services
Cherith Brook Catholic Worker Building Streetside Elevation	Housing Services for Unhoused Persons	Unhoused Services
Connecting People without Housing to Resources (CPHR)	Housing Services for Unhoused Persons	Unhoused Services

JOB TRAINING

Recommending 6
projects in this category

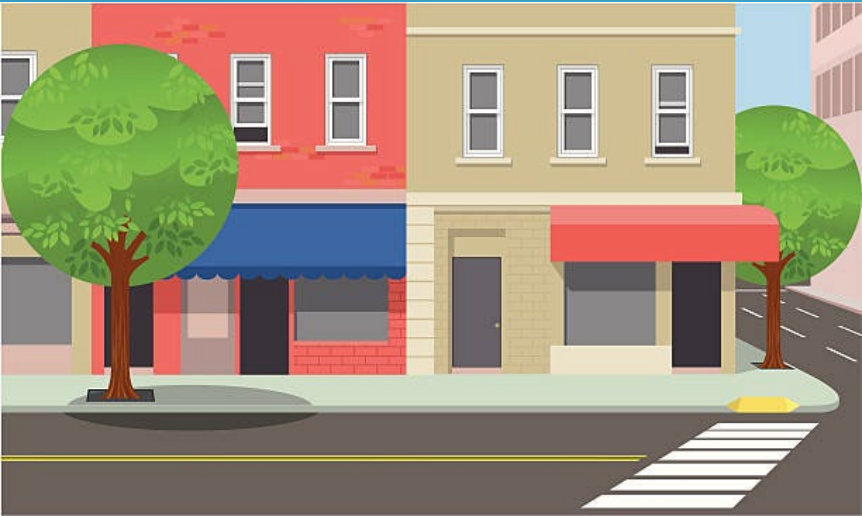


Recommend funding
not to exceed \$665,000

Project Name	Category	Goal Of Project/Program
Careerforce	Job Training	Job Training
Recovery W.O.R.K.S.	Job Training	Job Training
The Beloved Community	Job Training	Youth Services
Youth Internships	Job Training	Youth Services
F.I.L.M. Summer Program: Financial Literacy, Investments, Leadership, and Marketing	Job Training	Educational Programming
Employment Services Mobile Outreach	Job Training	Job Training

STRONG HEALTHY COMMUNITIES

Recommending 33
projects in this category



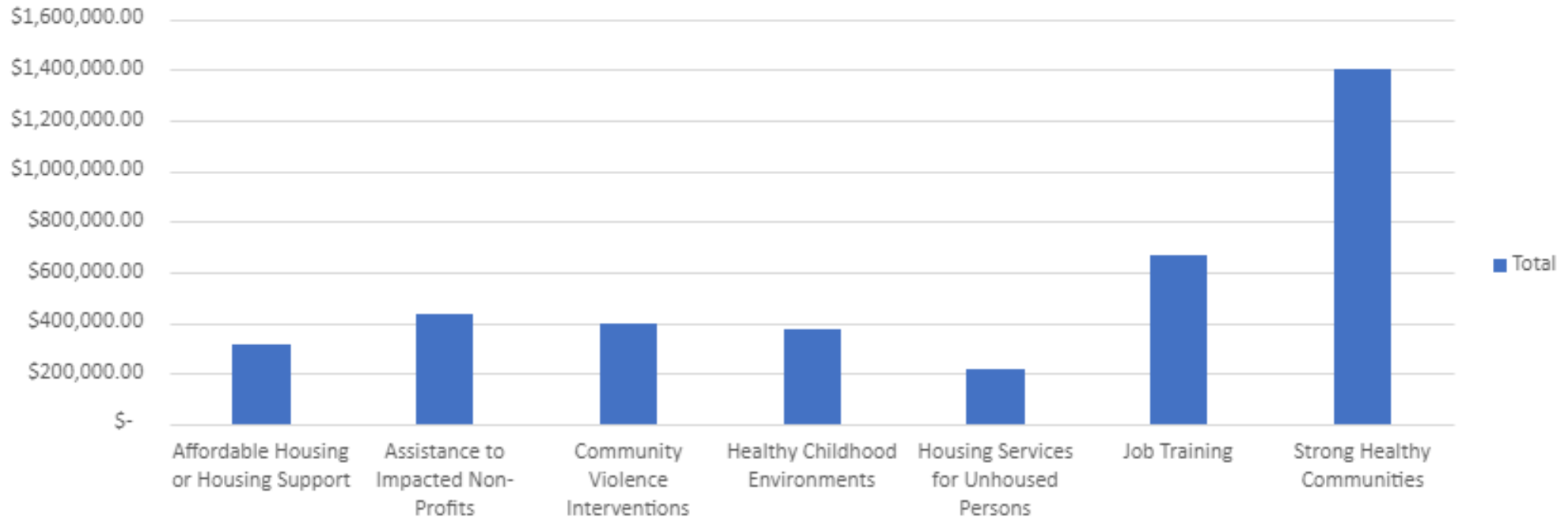
Recommend funding
not to exceed
\$1,401,853

Project Name	Category	Goal Of Project/Program
Independence Boulevard Streetscape Renewal	Strong Healthy Communities	Other Built Infrastructure
Art for All: Neighborhood & Youth Gathering Spaces	Strong Healthy Communities	Youth Services
North Lakes Storm Drain Erosion Prevention	Strong Healthy Communities	Infrastructure
Dead Tree Removal and Replacement	Strong Healthy Communities	Tree Planting
Gillham Road parkway Tree Planting	Strong Healthy Communities	Green/Environmental Infrastructure
Crossroads Street Tree Initiative	Strong Healthy Communities	Green/Environmental Infrastructure
Trees for Wornall Homestead	Strong Healthy Communities	Green/Environmental Infrastructure
Tree Replacement in City ROW	Strong Healthy Communities	Green/Environmental Infrastructure
Dead Trees/New Roots and Growth at Parade Park Homes Inc.	Strong Healthy Communities	Green/Environmental Infrastructure
Trees for Roanoke Park	Strong Healthy Communities	Green/Environmental Infrastructure
Rockhill Ridge Sustainable Streetscapes	Strong Healthy Communities	Green/Environmental Infrastructure
Tree Planting for WGNA	Strong Healthy Communities	Green/Environmental Infrastructure
Columbus Park Street Trees	Strong Healthy Communities	Green/Environmental Infrastructure
9th Street Garden Expansion	Strong Healthy Communities	Community Gardening

Community garden enhancements	Strong Healthy Communities	Community Gardening
Independence Avenue Bridge Mural	Strong Healthy Communities	Blight Remediation
Shoal Creek Valley HOA Street Light Replacement	Strong Healthy Communities	Infrastructure
Maple Park- Paved Loop	Strong Healthy Communities	Infrastructure
Expanding the WCF Tool Lending Library	Strong Healthy Communities	Infrastructure
Affordable, Nutritious Food for All Tackling Food Inequality	Strong Healthy Communities	Public Health
Therapy Fund Cycle 1	Strong Healthy Communities	Public Health
The Home Of Fruits and Nuts!	Strong Healthy Communities	Community Gardening
Youth program	Strong Healthy Communities	Youth Services
GROWING HEALTHY FAMILIES	Strong Healthy Communities	Educational Programming
Blue Hills - BEYOND	Strong Healthy Communities	Neighborhood Capacity
Park Improvements	Strong Healthy Communities	Public Health
Solar Solution	Strong Healthy Communities	Infrastructure
Rebuilding the Corner at Independence Avenue and Brighton	Strong Healthy Communities	Neighborhood Capacity
Capacity Building and Expansion	Strong Healthy Communities	Community Gardening
Health & Harmony in Pendleton Heights	Strong Healthy Communities	Youth Services
Fostering Healing and Growth in Libraries	Strong Healthy Communities	Educational Programming
Shoal Creek Valley Speed Deterrents	Strong Healthy Communities	Infrastructure

Sum of Recommended Award

Total Recommended Awards by Project Category



Category

Staff

Upon Council Resolution, Staff will:

Negotiate

Begin negotiations with approved applicants

Contract

Follow procurement process to enter into agreements, and/or transfer funds

Fund

Distribute funds, per agreement scope

Report

Work with Finance on proper documentation and reporting per federal guidelines

PHASE 4: CONTRACTING & REPORTING

RebuildKC

NEIGHBORHOOD GRANTS