

Street Trees

-One (1) 3.5" Cal. B&B street tree per 30 lf of road frontage

52nd Street

Required: 300 lf = 10 Street Trees

Provided: 10 Street Trees

Mersington Ave.

Required: 286 lf = 10 Street Trees

Provided: 10 Street Trees

Building Area

-One (1) 2.5" Cal. B&B tree per 5,000 sf of building area

Required: 17,198 sf = 4 Trees

Provided: 4 Trees

Interior Parking Lot

-35 sf of landscape area per parking stall

Required: 43 stalls = 1505 sf of landscape area within parking lot

Provided: 1526 sf of landscape area

-One (1) 2.5" Cal. B&B Tree and five (5) shrubs per five (5) Parking Stalls

Required: 43 stalls = 9 Trees and 43 shrubs

Provided: 9 Trees and 77 Shrubs

Parking Lot Perimeter

-Min. 3' tall evergreen screen between parking lot and residential development

Required: East side along parking lot.

Provided: Yes

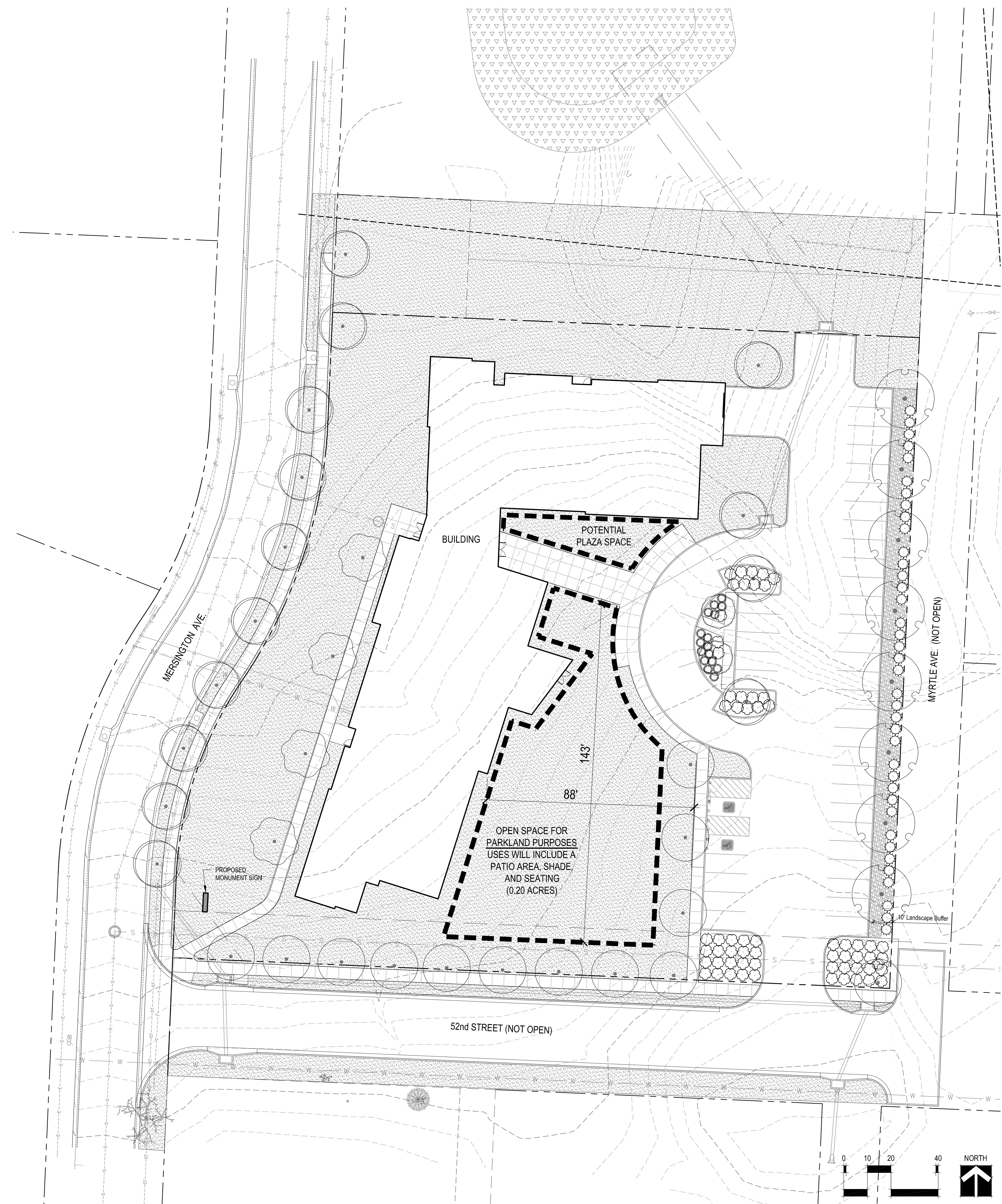
-One tree per every 30'

Required: 233 lf = 8 trees

Provided: 8 trees

PLANT SCHEDULE

TREES	BOTANICAL NAME	COMMON NAME	CONT	CAL
	<i>Acer griseum</i>	Paperbark Maple	B & B	2.5"Cal
	<i>Acer saccharum</i> 'Fall Fiesta'	Sugar Maple	B & B	2.5"Cal
	<i>Acer saccharum</i> 'Green Mountain' TM	Green Mountain Sugar Maple	B & B	2.5"Cal
	<i>Quercus acutissima</i>	Sawtooth Oak	B & B	2.5"Cal
	<i>Quercus shumardii</i>	Shumard Red Oak	B & B	2.5"Cal
SHRUBS	BOTANICAL NAME	COMMON NAME	CONT	
	<i>Rhus aromatica</i> 'Gro-Low'	Gro-Low Fragrant Sumac	#5 Cont.	
	<i>Syringa vulgaris</i> 'Prairie Petite'	Lilac	#5 Cont.	
GROUND COVERS	BOTANICAL NAME	COMMON NAME	CONT	
	<i>Festuca sp.</i>	Fescue Lawn	sod	

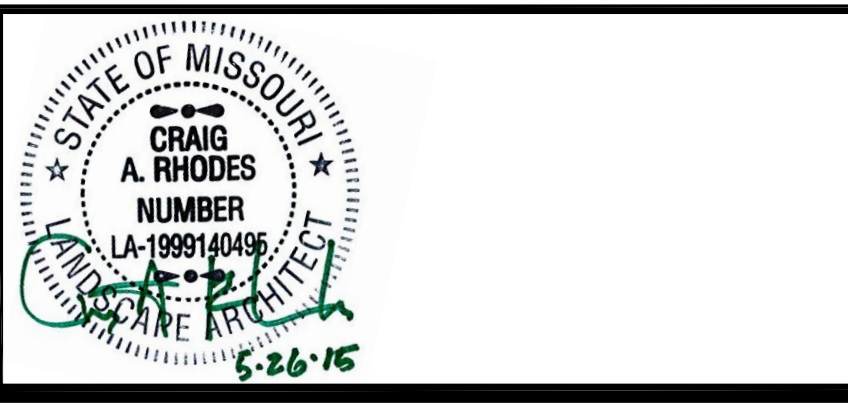


H:\P-14231 Cleveland Heights Senior Living\04_Dwg\11 1823\Sheet\100 Overall Landscape Plan.dwg May 26, 2015 - 8:27am

MAR 03, 2015	MPD SUBMITTAL	1	LBN/KAM/LJG
JAN 28, 2015	INITIAL ISSUE	NO.	LBN/KAM/LJG
DATE	REVISIONS AND RECORD OF ISSUE	NO.	BY / CK APP

T & B Project No. 04-3220	File Name: L100 Overall Landscape Plan.dwg
DESIGNED BY: LBN DRAWN BY: ME CHECKED BY: LJG	DATE OF ORIGINAL ISSUE: 28 JAN 2015
<small>THE PROFESSIONAL WHOSE SIGNATURE AND PERSONAL SEAL APPEARS ON THIS SHEET ASSUMES RESPONSIBILITY ONLY FOR WHAT APPEARS ON THIS PAGE, AND DISCLAIMS (PURSUANT TO SECTION 327.411 RSMO) ANY RESPONSIBILITY OF ALL OTHER PLANS, SPECIFICATIONS, ESTIMATES, REPORTS OR OTHER DOCUMENTS OR INSTRUMENTS NOT SEALED BY THIS UNDERSIGNED PROFESSIONAL RELATING TO OR INTENDED TO BE USED FOR ANY PART OR PARTS OF THE PROJECT TO WHICH THIS PAGE REFERS.</small>	

LANDON BONE BAKER ARCHITECTS
734 N Milwaukee Avenue Chicago, IL 60642
p 312-988-9100 f 312-829-3302
www.landonbonebaker.com
© 2015 Landon Bone Baker Architects, LLC



TB Taliaferro & Browne, Inc.
Civil / Structural Engineering,
Landscape Architecture & Surveying
1020 E. 8th STREET
KANSAS CITY, MISSOURI 64106
PH (816) 283-3456 FAX (816) 283-0810
PROFESSIONAL ENGINEERING CORPORATION
MISSOURI LICENSE NO. 000466 KANSAS LICENSE NO. E-1481
PROFESSIONAL LAND SURVEYING CORPORATION
MISSOURI LICENSE NO. 000094 KANSAS LICENSE NO. LS-196

**CLEVELAND HEIGHTS
MPD DISTRICT
KANSAS CITY, MISSOURI**

Overall Landscape Plan
DWG NO.:
L100