



# ORDINANCE NO. 250510 (Committee Substitute)

## Blue River Wastewater Treatment Plant (WWTP) Biosolids Facility, Amendment No. 8

Authorizing a \$2,054,790.00 design professional services contract Amendment No. 8 to Contract No. 1394 with Carollo Engineers, Inc., for the Blue River Wastewater Treatment Plant (WWTP) Biosolids Facility project for a total contract amount of \$22,602,692.77; authorizing an extension of the term for an additional 504 days for a total term of 3,059 days (8.38 years); and recognizing this ordinance as having an accelerated effective date.

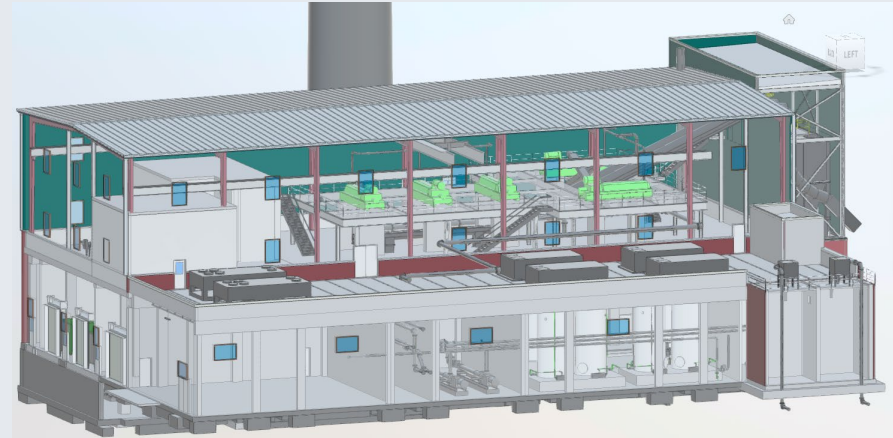
July 15, 2025

Transportation, Infrastructure & Operations  
Committee



# ORDINANCE NO. 250510

- ✓ Addresses critical needs for wastewater solids
  - ✓ Utilizes advanced anaerobic digestion with thermal hydrolysis
  - ✓ Maximizes use of existing facilities
  - ✓ Eliminates air emissions challenge
- ✓ Implemented through design/build
- ✓ Facilitates energy and resource recovery



# ORDINANCE NO. 250510

## BENEFITS



Elimination of  
incineration with  
emissions  
problems



All solids  
processed  
through existing  
digesters



Class A product,  
allows beneficial  
use of biosolids



Energy recovery



Greenhouse gas  
and odor  
reductions

## ORDINANCE NO. 250510

### CLEAN WATER STATE REVOLVING FUND (CWSRF) FINANCING

- Applied for and received approval for \$100 million in State Revolving Fund Subsidization for FY21.
- Anticipated \$12-\$18 million in cost avoidance as a result of utilizing this funding.
- City allowed to use our M/WBE program, not State's DBE program

# ORDINANCE NO. 250510

## Electrical Equipment Delay

- Bids Received August 2020
- Inflation was low.
- Contractor concerns about delays.
- Contractors could not price delays due to COVID.
- Water Services took on the risks for equipment delays in Confidential Meetings.
- 379 days delay for Electrical Equipment (Switchgear and Motor Control Centers)
- Increased Contract Time Caused increased inspections costs.



# ORDINANCE NO. 250510

## M/WBE CREO KC Goals and Participation

CREO KC established goals of 17% MBE and 8% WBE on this Design Professional Services project on February 23, 2018, which were modified to 15% MBE and 7% WBE on October 1, 2019.

Participation for this amendment will be 14% MBE and 11% WBE.

### MBE Firms

Premier Engineering Consultants, LLC  
Custom Engineering, Inc.  
Parson & Associates, LLC  
Tech Services to Go, Inc. dba TSI  
Taliaferro & Browne, Inc.  
3T Design & Development, LLC

### WBE Firms

TREKK Design Group, LLC  
Wellner Architects, Inc.  
McCurdy Engineers, LLC

THANK YOU