



# TRANSPORTATION, INFRASTRUCTURE & OPERATIONS COMMITTEE

JANUARY 19, 2022



# ORDINANCE NO. 220038

## *Annual Sewer Rehabilitation: Large Diameter City-Wide Sewer Inspections Area 1*

Authorizing of \$2,250,000.00 without further City Council approval. Authorizing a \$750,000.00 Professional, Specialized, or Technical Services contract with ACE Pipe Cleaning for the Annual Sewer Rehabilitation: Large Diameter City-Wide Sewer Inspections Area 1 project; and authorizing two successive one-year renewal options for a maximum expenditure of \$2,250,000.00 without further City Council approval.

# ORDINANCE NO. 220039

## *Annual Sewer Rehabilitation: Large Diameter City-Wide Sewer Inspections Area 2*

Authorizing a \$750,000.00 Professional, Specialized, or Technical Services contract with Hydromax USA for the Annual Sewer Rehabilitation: Large Diameter City-Wide Sewer Inspections Area 2 project; and authorizing two successive one-year renewal options for a maximum expenditure of \$2,250,000.00 without further City Council approval.

# ORDINANCE NOS. 220038 AND 220039

- Amended Consent Degree emphasizes continued sewer system condition improvements.
- Assess condition of large diameter sewers(48" & larger) to support Business Risk Exposure Model (BRE).
- Supports proactively reduce failures and limit the consequences of those failures.



# ORDINANCE NOS. 220038 AND 220039

Required large diameter sewer  
Inspections may include:

**HDCCTV** – High Definition Closed Circuit Television

**SONAR** – Sound Navigation and Ranging

**LASER** – Light Amplification by Stimulated Emission of Radiation

**LIDAR** – Light Detection and Ranging

**Sewer Walks** and **Hammer Rebound Test**



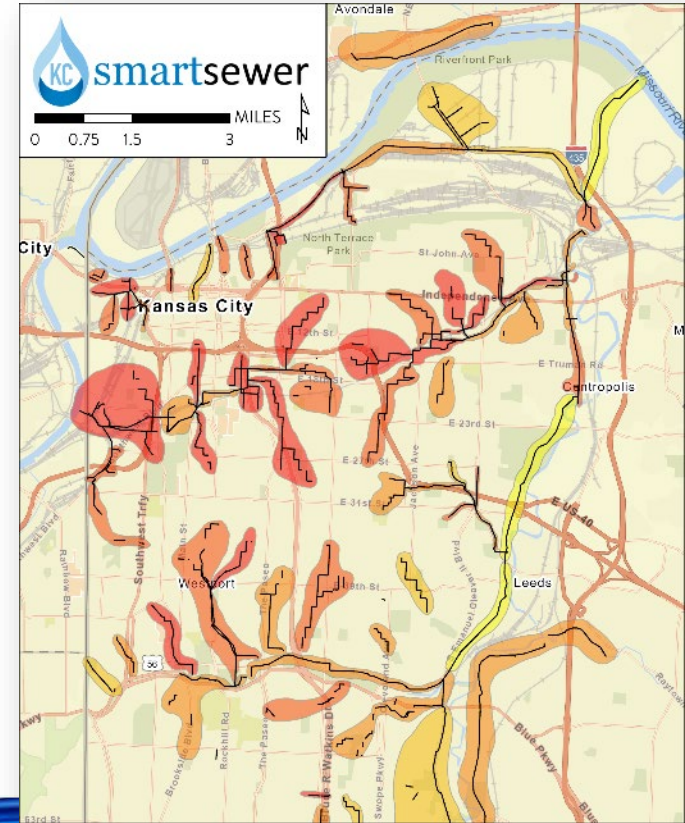
Sewer Walk Inspection



CCTV Inspection

# ORDINANCE NOS. 220038 AND 220039

- Provides key system condition data to drive Annual Sewer Rehabilitation - Large Diameter Sewers Project (Ordinance 210870, 9/23/2021).
- Supports improving BRE and prioritizing highest risk large diameter sewers for rehabilitation.
- Two contracts for inspection in order to maintain effective workflow for condition assessment and rehabilitation works.
- Targeted to inspect approximately 100 miles under this Ordinance with two successive renewals.





THANK YOU

