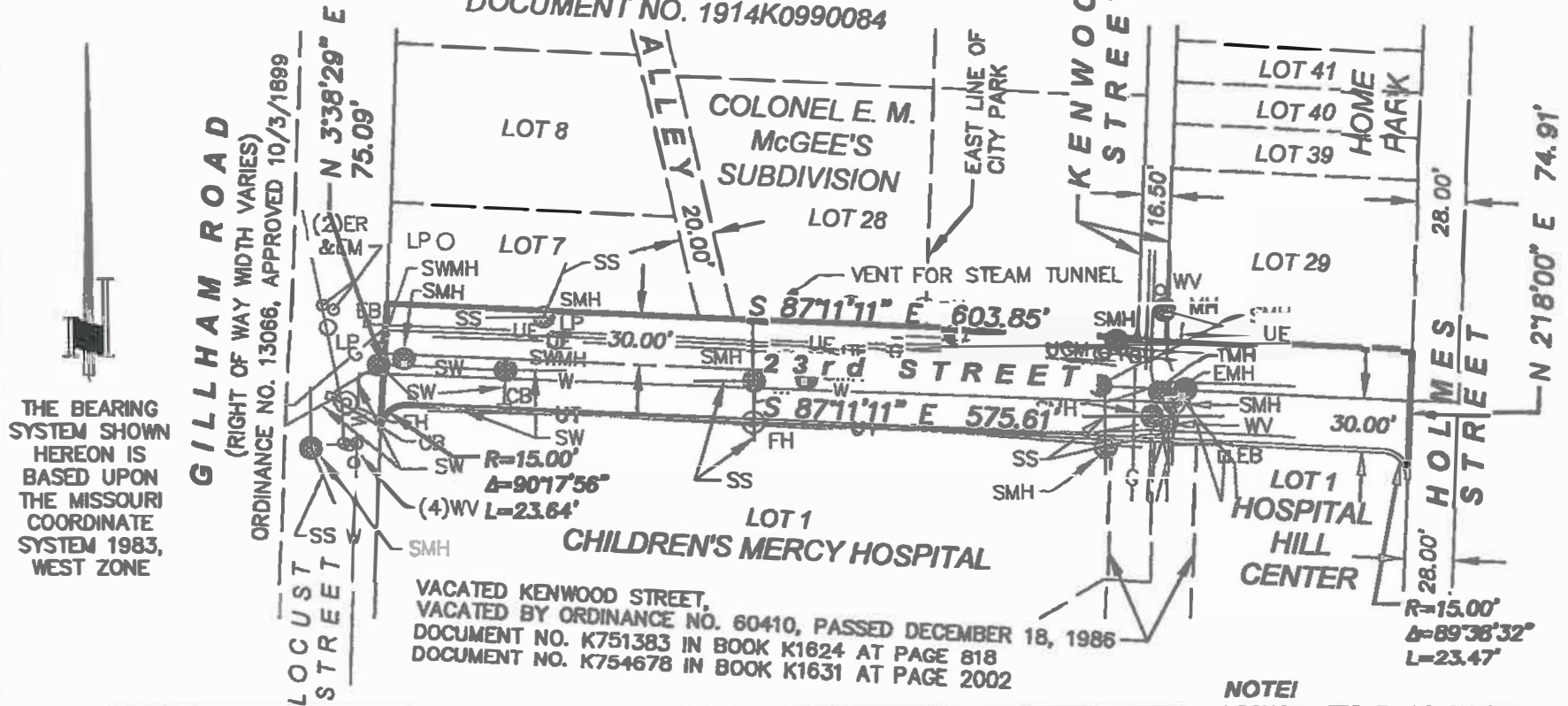


8-49-33
 17-03-41994-1
 41994-23rdStVac.dwg

CITY PARK
 BOOK B-1559 PAGE 464
 DOCUMENT NO. 1914K0990084



THE BEARING SYSTEM SHOWN HEREON IS BASED UPON THE MISSOURI COORDINATE SYSTEM 1983, WEST ZONE

VACATED KENWOOD STREET,
 VACATED BY ORDINANCE NO. 60410, PASSED DECEMBER 18, 1985
 DOCUMENT NO. K751383 IN BOOK K1624 AT PAGE 818
 DOCUMENT NO. K754678 IN BOOK K1631 AT PAGE 2002

NOTE!
 LOCUST STREET, AS SHOWN HEREON, WAS PLACED UNDER CONTROL OF BOARD OF PARK COMMISSIONERS BY ORDINANCE NO. 9536, APPROVED 8/9/1911, AS A PART OF GILLHAM ROAD.

ANDERSON
 SURVEY COMPANY
 203 N. W. EXECUTIVE WAY
 LEES SUMMIT, MISSOURI 64063
 (816) 248-5050

MISSOURI CERTIFICATE OF AUTHORITY, 000076



JAMES S. ANDERSON,
 PLS #1726

EXHIBIT A - VACATION OF 23rd STREET

FOR: CHILDREN'S MERCY HOSPITAL
 2401 GILLHAM ROAD
 KANSAS CITY, MISSOURI 64108
 DATE: MARCH 8, 2017

PROJECT LOCATION:
 KANSAS CITY
 JACKSON COUNTY
 MISSOURI

RECEIVED
 APR 14 2017
 SCALE 1" = 100 FEET
 CITY DEVELOPMENT
 SCALE IN FEET