

Neighborhood Planning & Development Commission Presentation

March 4, 2020

John DeBauche and Angela Eley
City Planning Department

Case No.: CD-CPC-2020-00015

MARTIN CITY
AREA PLAN



CITY OF
KANSAS CITY,
MISSOURI

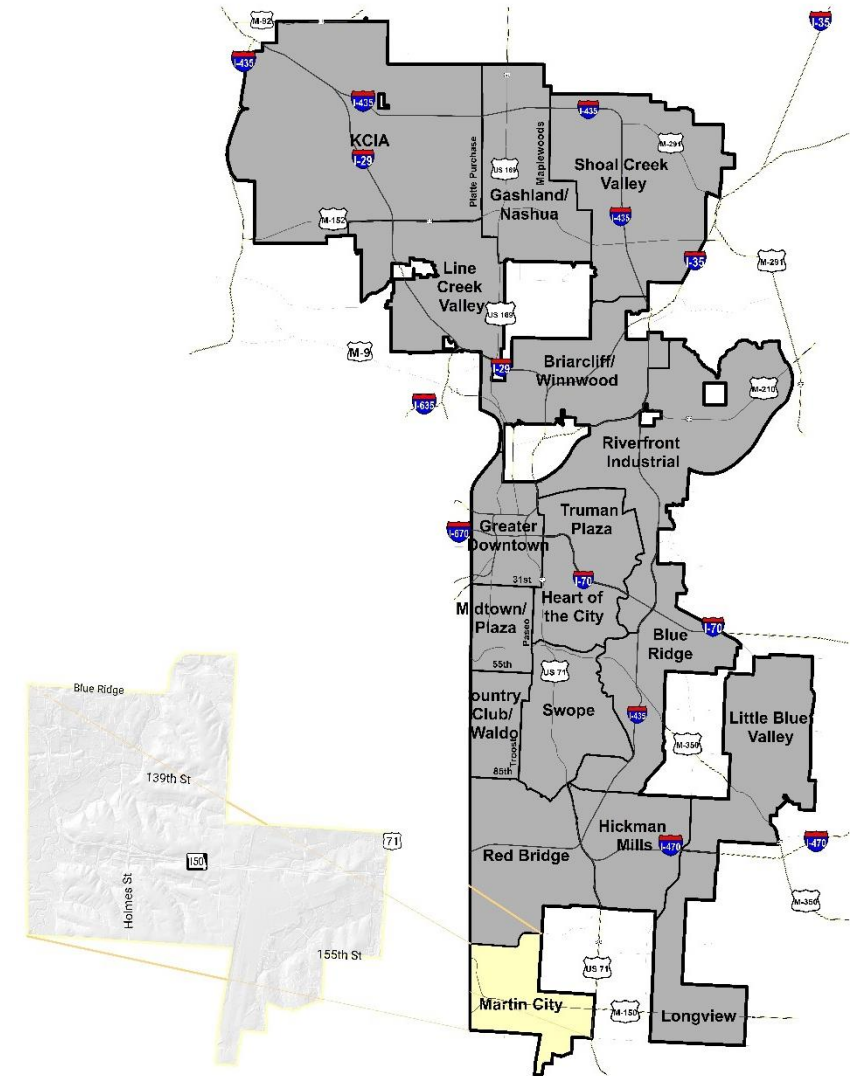
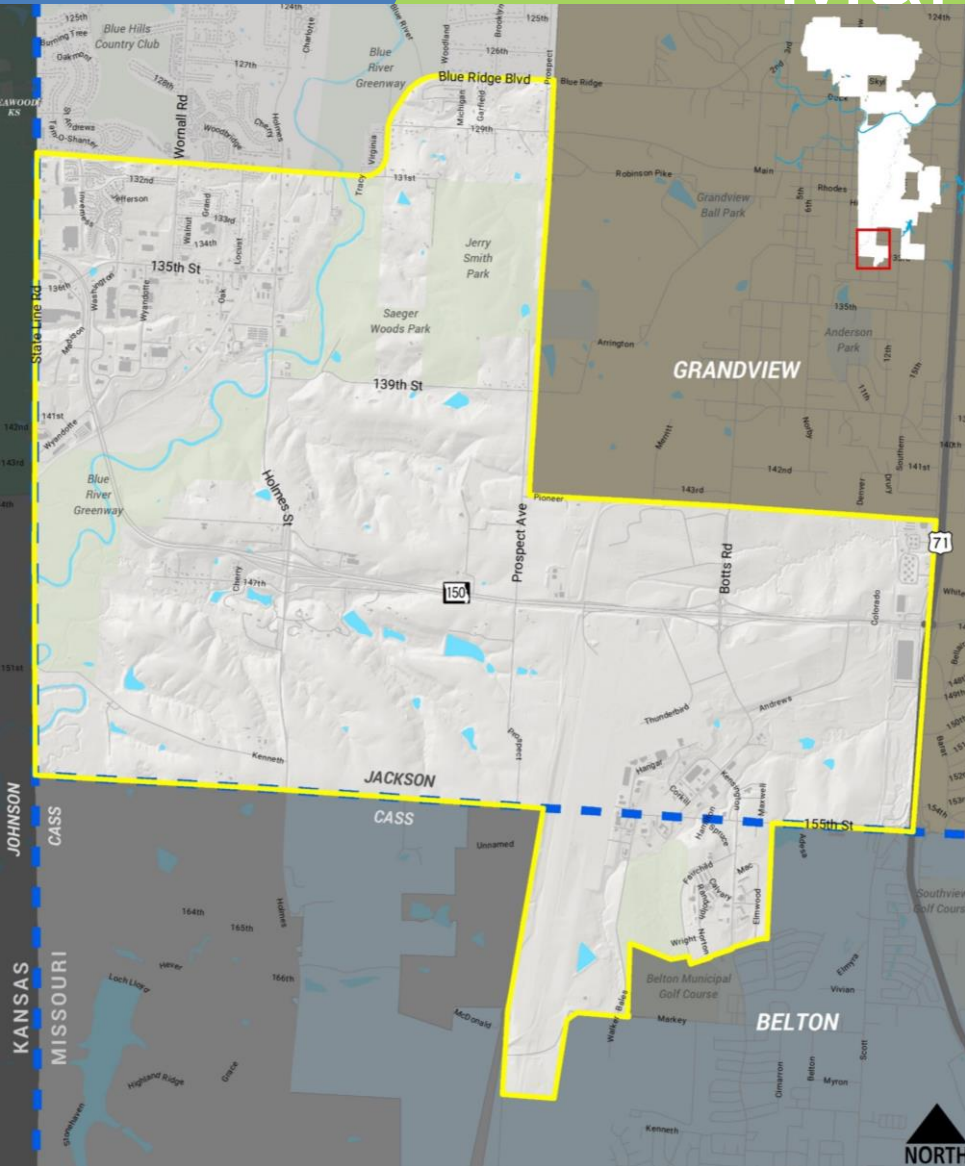
CITY PLANNING
AND DEVELOPMENT

Martin City Area Plan

Plan

Boundaries:

- Blue Ridge Blvd.
- Grandview city limits
- Belton city limits
- State Line Road



COMMUNITY OUTREACH

- **5 Steering Committee Meetings**
- **2 Public Meetings**
- **Project Website – Presentations and Draft Documents**
- **Umbrella Organizations – Martin City CID, Port KC**




Martin City Area Plan

Plan Elements

- Vision Statement, Goals and Guiding Principles
- Land Use
- Transportation
- Neighborhoods
- Economic Development
- Infrastructure
- Implementation



Vision Statement



“The Martin City Area will be a sustainable, diverse community that is positioned for growth while maintaining its desirable community character.”



PRIMARY GOALS

Promote **quality, compatible development** with a well-reasoned **future land use pattern**

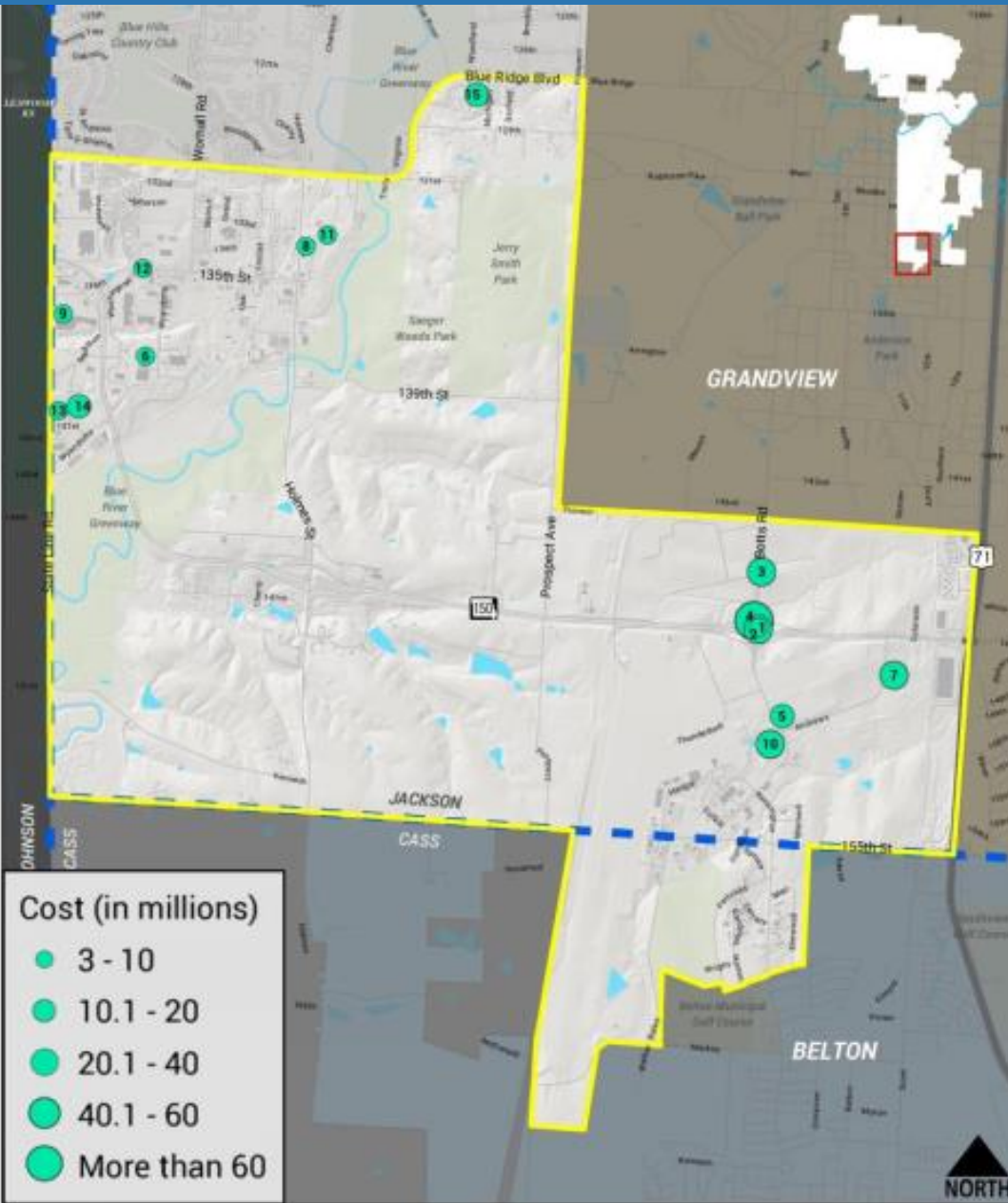
Capitalize on new and existing employment centers to **maximize** their **potential to attract quality investment** that **spurs new development** into the area.

Reinvest in, maintain and create strong neighborhoods while **increasing a variety of housing options** that are secure and safe **for all** stages of life and income.

Maintain & improve upon the local **transportation network** to **accommodate all users**.

Integrate resilient and green infrastructure throughout the area for **long-term sustainability**.

Major Developments & Investments 2012-2022



MapID	Name	Year Complete	Status	Cost (millions)
2	Botts and Hwy 150 Diverging Diamond	2012	Completed	29
1	Richard-Gebaur/CenterPoint Road Improvements	2012	Completed	5
4	National Nuclear Security Administration Plan	2013	Completed	687
3	Botts Road-M150 to Grandview City limits	2013	Completed	30
5	Centerpoint Intermodal Center - I	2013	Underway	19
7	Centerpoint Intermodal Center - II	2016	Completed	29
6	MMC Contractors Expansion	2016	Completed	4
10	Sioux Chief Manufactutring	2017	Completed	40
8	Fishtech Labs Headquarters	2017	Completed	10
9	Super Target Renovations	2017	Completed	3
11	Fishtech Cloud Security Operations Center	2018	Completed	8
12	135th St Wornall to MO-150 Hwy	2019	Approved	3
13	Mancaves Storage	2019	Underway	6
14	The Madison Senior Living Community	2020	Underway	17
15	Blue River Woods Single Family Homes	2022	Completed	14

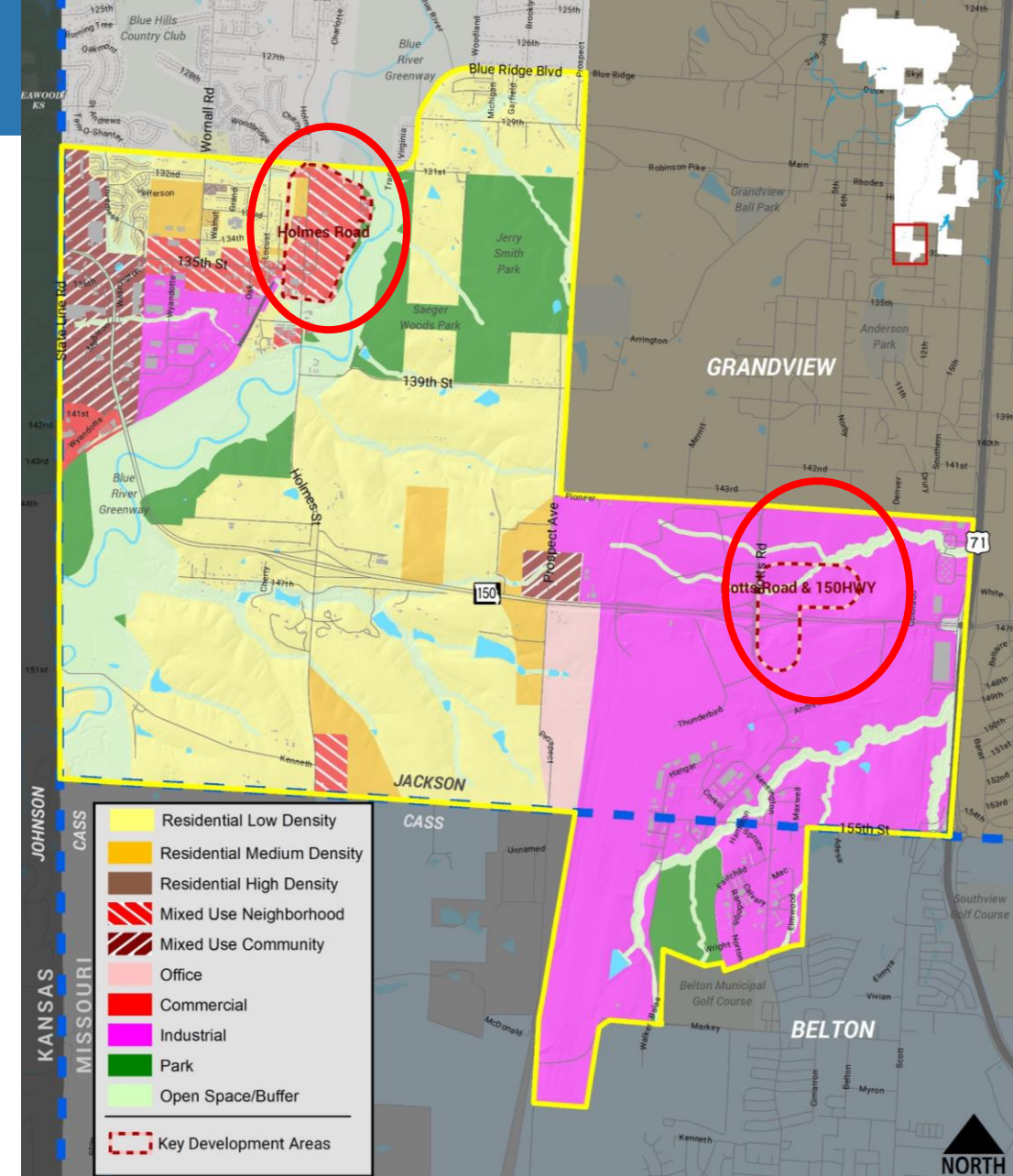
What's happened in the Last 10 years....

- Improved infrastructure along Hwy 150.
- Increased development in key nodes along 150 Hwy. (Botts Rd., State Line)
- Improved infrastructure along 135th Street.
- Addition of commercial development along Holmes Road.

Future Land Use

Refined Land Use Map:

- Prior Institutional uses are now Residential Low Density
- Key nodes are now Mixed Use (Prospect/150 Hwy, Holmes Rd.)
- Recognizes key development areas at 135th & Holmes; Botts Rd/150 Hwy

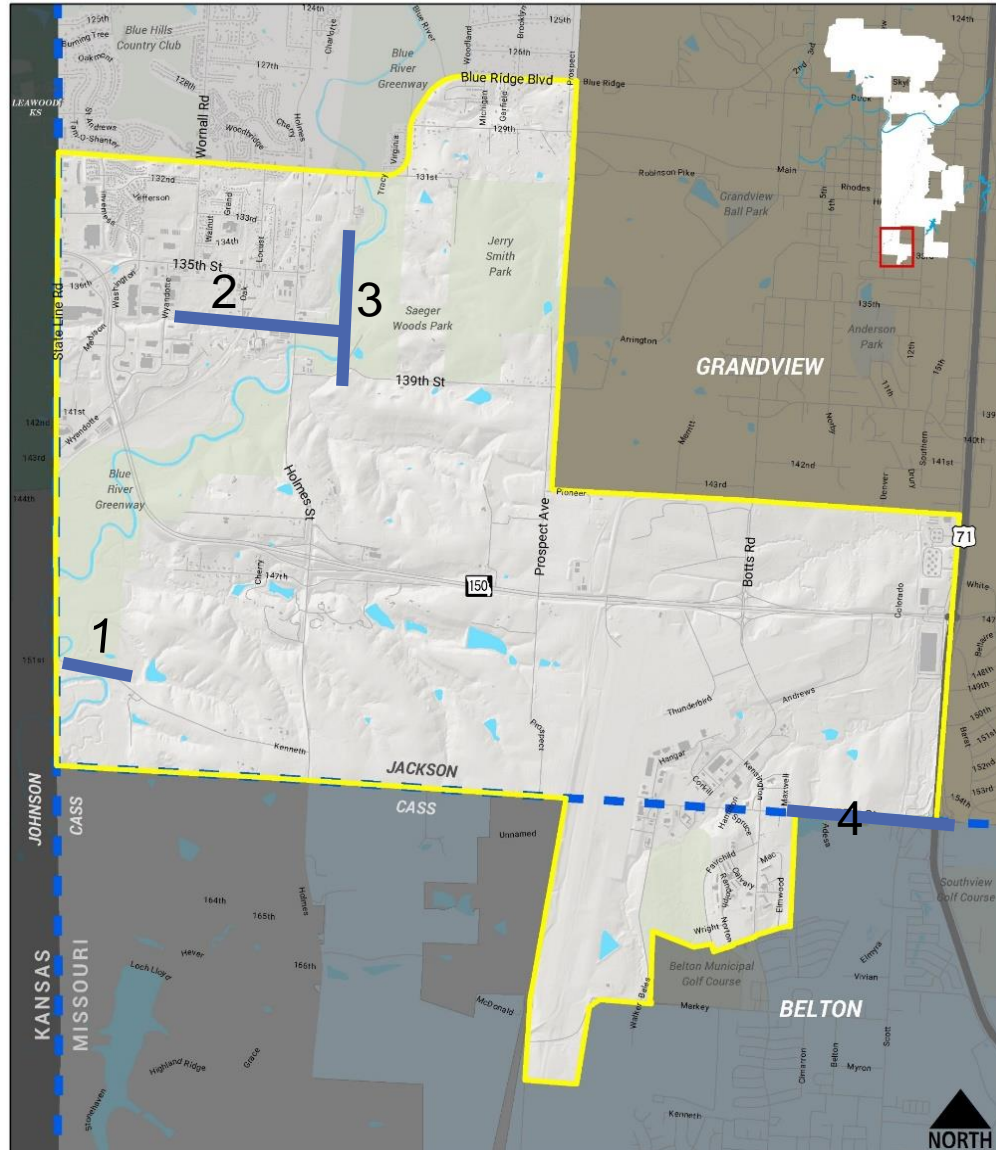


Transportation Guiding Principles

Four areas of review

- **Roadway Improvements**
- **Bicycle/Trail Improvements**
- **Pedestrian Improvements**
- **Transit Improvements**

Roadway Improvements



Ongoing/Completed

1. Kenneth Road Bridge (ongoing)
2. 135th Street Improvements (completed)
3. Holmes Road – Blue Ridge to 137th (ongoing)
4. 155th Street Improvements (completed)

Suggested Future Initiatives

- Improvement of the **HOLMES ROAD AND BLUE RIDGE BOULEVARD** intersection.
- **OAK STREET** to the north of 135th Street
- **CHERRY STREET** and 135th Street (water not draining into the storm drains)
- **LOCUST STREET** and 133th Street
- **MITIGATE RUN-OFF FROM 135TH STREET** into the parking areas.

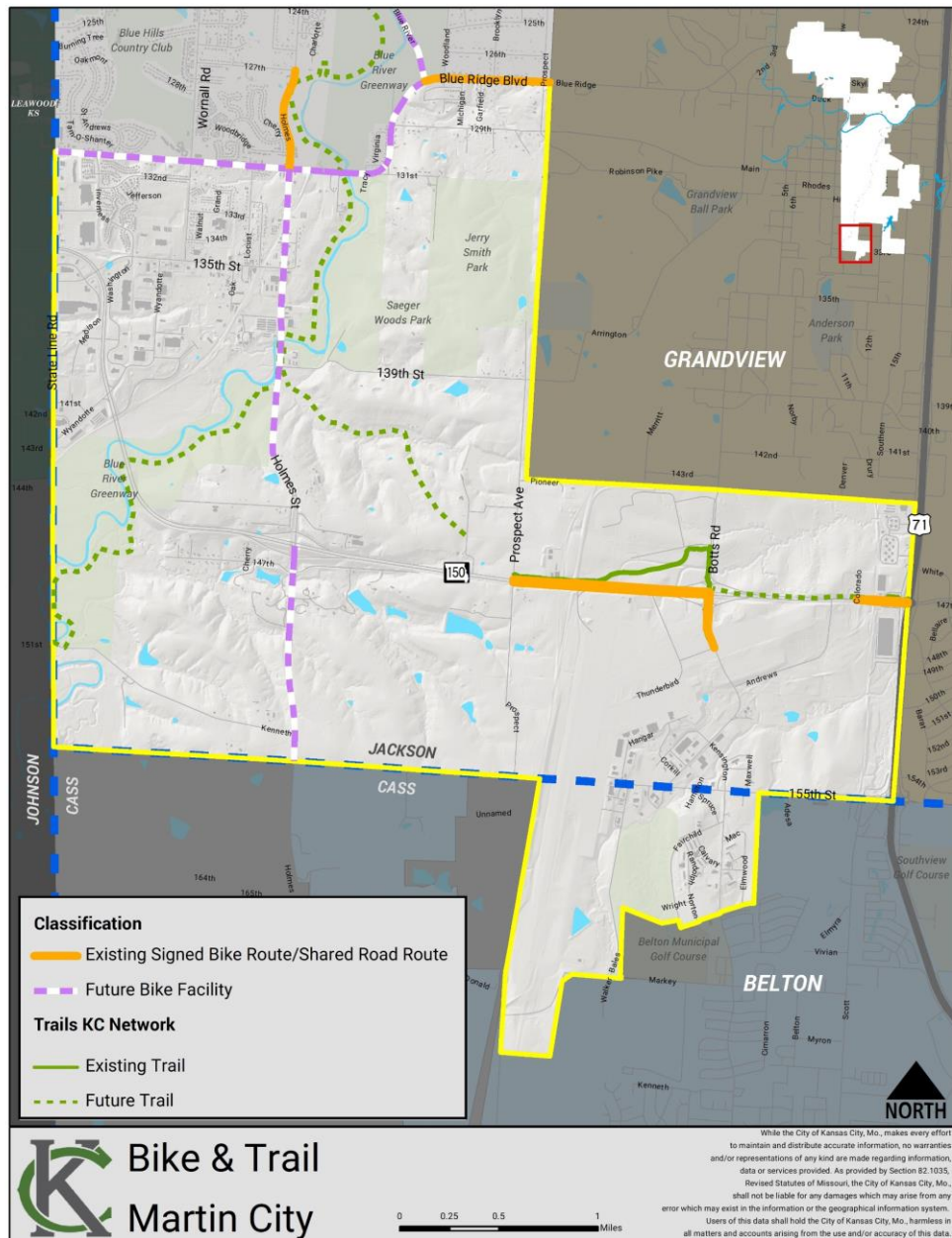
Bicycle/Trail Improvements

Priority Bike and Trail Development

- Along the Blue River
- 150 Highway – Prospect to 71 Highway

Suggested Future Initiatives

- Establish a **BICYCLE FACILITY/TRAIL HUB** for the area to provides **CONNECTIONS TO COMMERCIAL BUSINESSES** within the area.
- Incorporate **“COMMUNITY” FEATURES** such as: **HISTORICAL MARKERS, PUBLIC ART** and **COMMUNITY AND NEIGHBORHOOD GATEWAYS**
- Work with **BIKE SHARE KC** to introduce the B-cycle program within the plan area.
- **TRAIL ORIENTED DEVELOPMENT** is capitalizing on **trails** as a **community amenity** and prioritizing pedestrian and bicycle **connectivity to activity centers**.



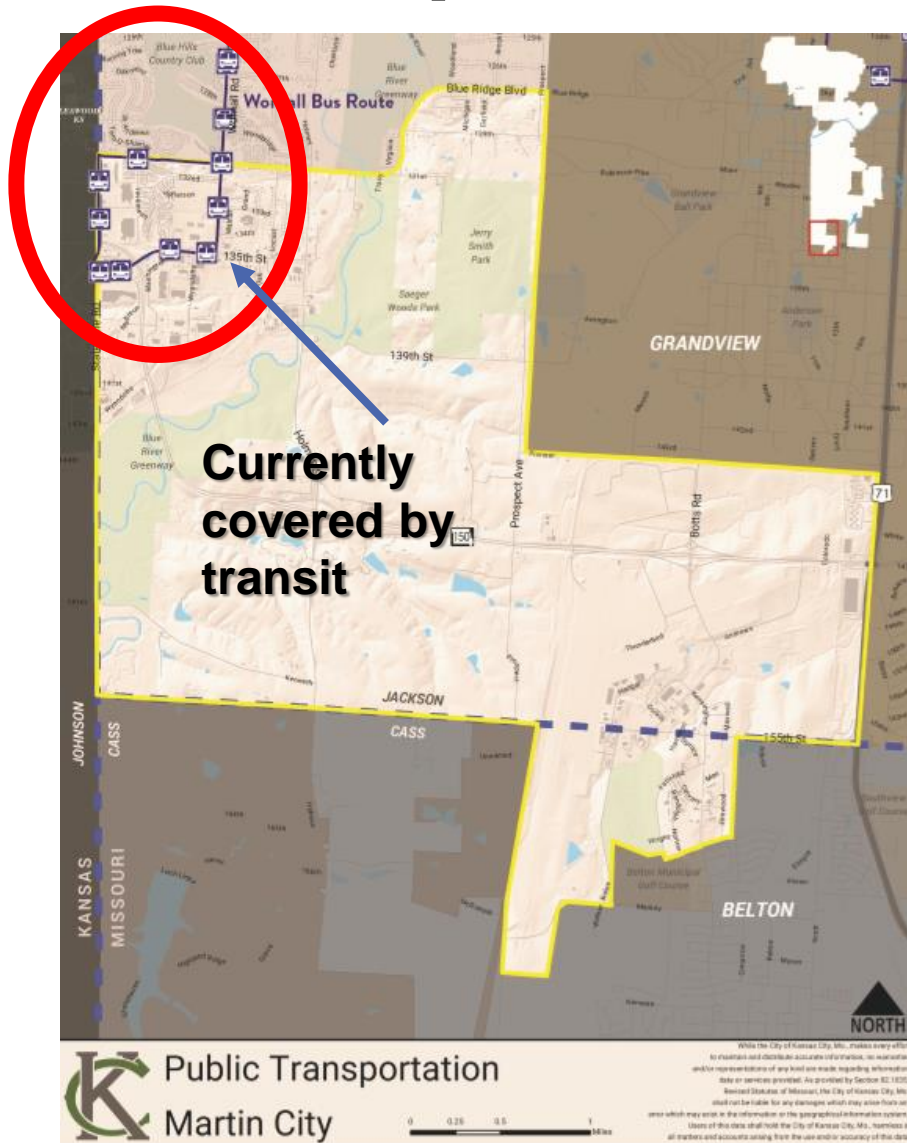
Pedestrian Improvements

Suggested Future Initiatives

- Target **pedestrian connections to SCHOOLS**, identify **gaps in the SIDEWALK** system along arterials and collector streets ; to **PARKS** and **RECREATION AREAS**.
- Improve **PEDESTRIAN CONNECTIONS ALONG TRANSIT** routes, making pedestrian crossings safer.
- Work with the school district on a **“SAFE ROUTES TO SCHOOL PLAN”** for Martin City K-8th Grade School.
- Include **SIDEWALK CROSSING SIGNALS OR OTHER PEDESTRIAN** (and bicycle) safety enhancements at major intersections and other critical locations.

Sidewalks Present

Transit Improvements



Suggested Future Initiatives

- Examine an **EXPANSION** of a **“MICRO TRANSIT”** system of a east-west route to better tie people to jobs and area destination centers.
- Improve **FIRST MILE/LAST MILE** system through improvements of trails, sidewalks and alternative methods of travel to make it easier for users.
- Introduction of a **VAN POOL system** that connects people to destination as an alternative to additional bus routes.

Neighborhoods & Housing Guiding Principles

Suggested Future Initiatives

- Work with the City to IMPROVE CODE ENFORCEMENT and to assist those in need with mitigation of these issues.
- Work with the KCPD to implement CRIME PREVENTION THROUGH ENVIRONMENTAL DESIGN (CPTED) on new development projects to improve neighborhood safety and crime prevention.
- Work with the Martin City CID and other ORGANIZATIONS TO BUILDING CAPACITY within the area.
- Reach out to private development community to support the PROVISION OF DIVERSE HOUSING OPTIONS within appropriate areas within the community.
- Work with the community and the City to create a “CLEAN MARTIN CITY INITIATIVE” whose purpose is to reduce trash, illegal dumping and litter.

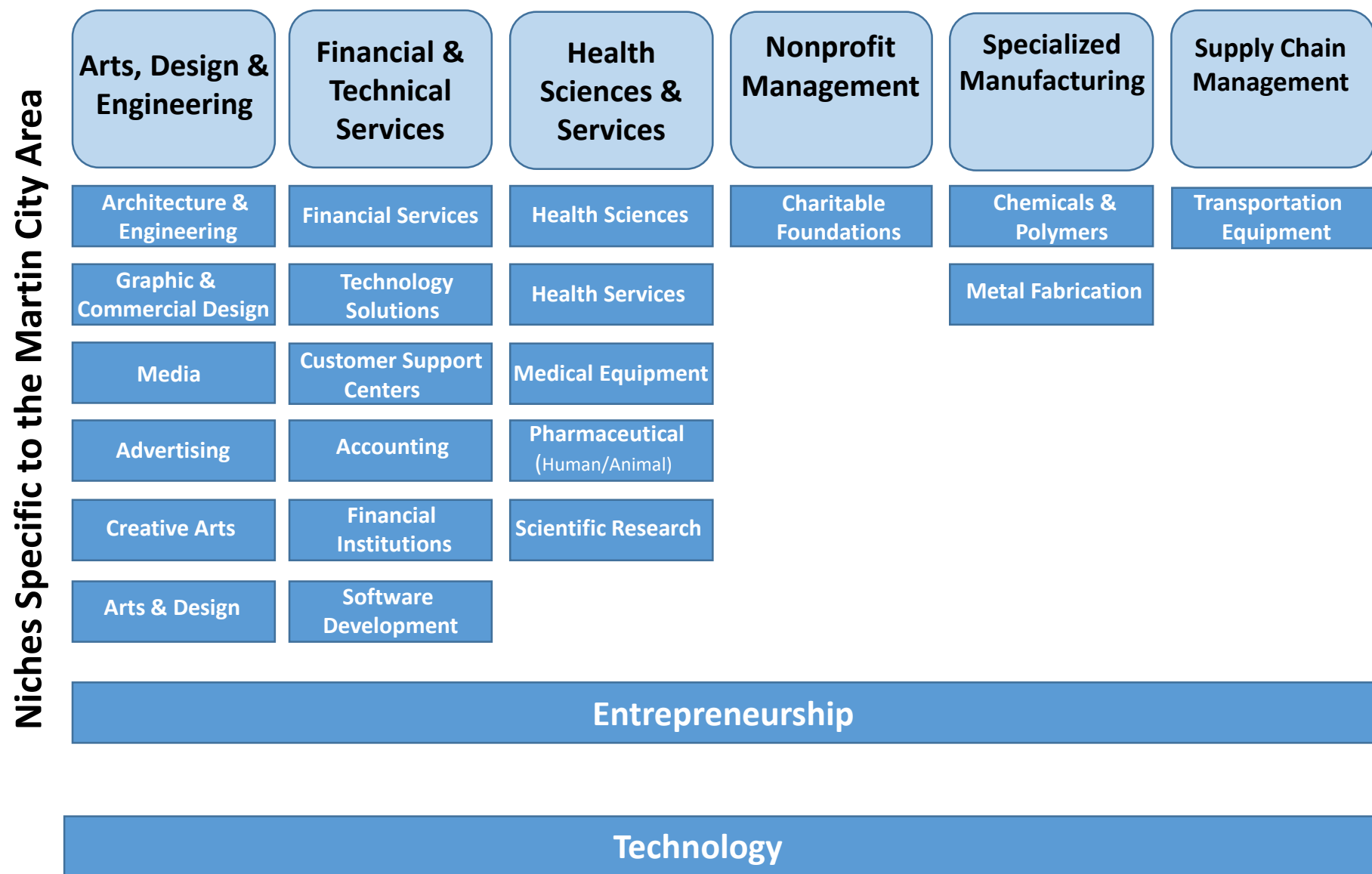


Economic Development Guiding Principles

IMPLEMENTING STRATEGIES FROM THE ADVANCE KC PLAN

- **BUSINESS STRATEGIES** - Retain and attract employers to the area and increase job opportunities.
- **PLACE STRATEGIES** - Improve area image and attractiveness.
- **WORKFORCE STRATEGIES** - Prepare the workforce & assist employers with recruitment.
- **DEVELOPMENT STRATEGIES** - Encourage and shape new development in the area.

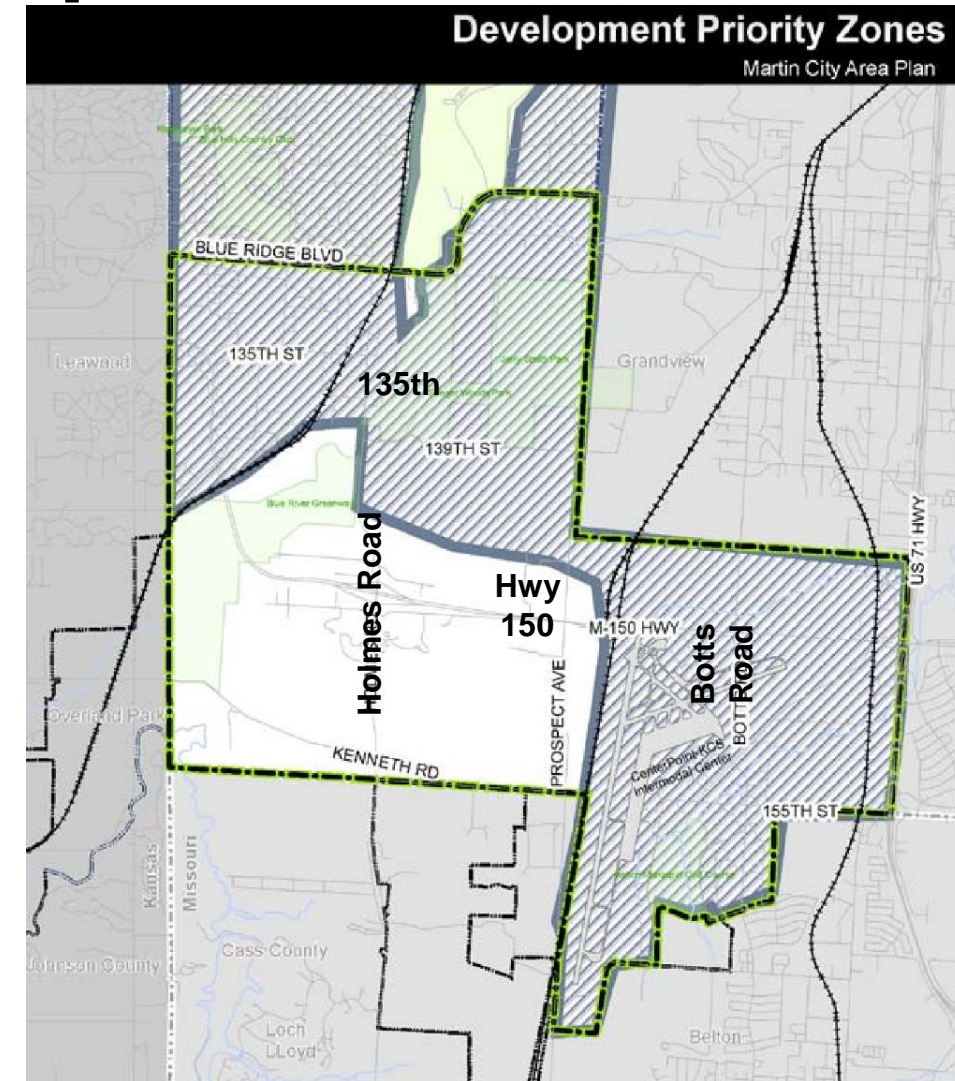
KCMO Economic Development Policy – Advance KC



Infrastructure Policies - Future Improvements

ENCOURAGE IMPROVEMENT PHASE IN A LOGICAL MANNER

to contiguous and development and an efficient use of resources.



Infrastructure: 2019 Policies

- MAXIMIZE STORM WATER CAPTURE
- Increase Street Trees, Streetscape/Landscape in ROW and GREEN SOLUTIONS/Capture in private development.
- Work to REMOVE BUILDING STORMWATER CONNECTIONS to laterals and fixing lateral to reduce sewer overflow issues.
- Formalize a GREEN INFRASTRUCTURE MAINTENANCE and PUBLIC/PRIVATE PARTNERSHIP policy.
- Consider OPEN CHANNELS when planning new street and stormwater improvements. Pipe systems are not efficient along flat street grades.
- BUILD RAIN GARDENS WITH NATIVE PLANTS in public and private spaces to control stormwater and for natural beautification.

Staff Contact Information

John DeBauche

john.debauche@kcmo.org 513-2897

Angela Eley

angela.eley@kcmo.org 513-2805