



# ORDINANCE NO. 250630

## Turkey Creek Pump Station Rehabilitation

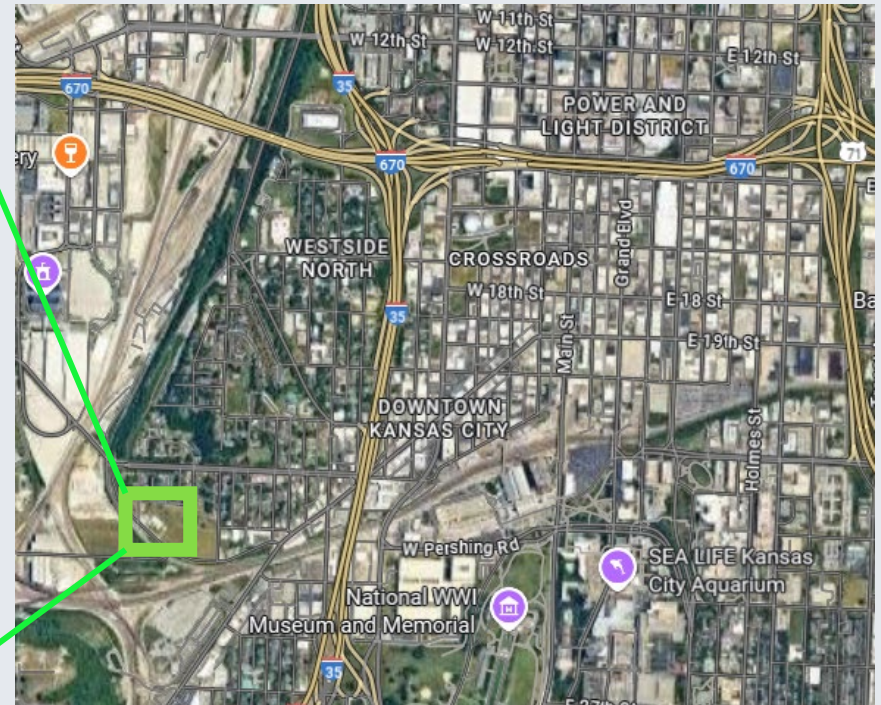
Authorizing a \$3,673,700.00 design professional services contract with CDM Smith, Inc., for the Turkey Creek Pump Station Rehabilitation project; and recognizing this ordinance as having an accelerated effective date.

August 12, 2025

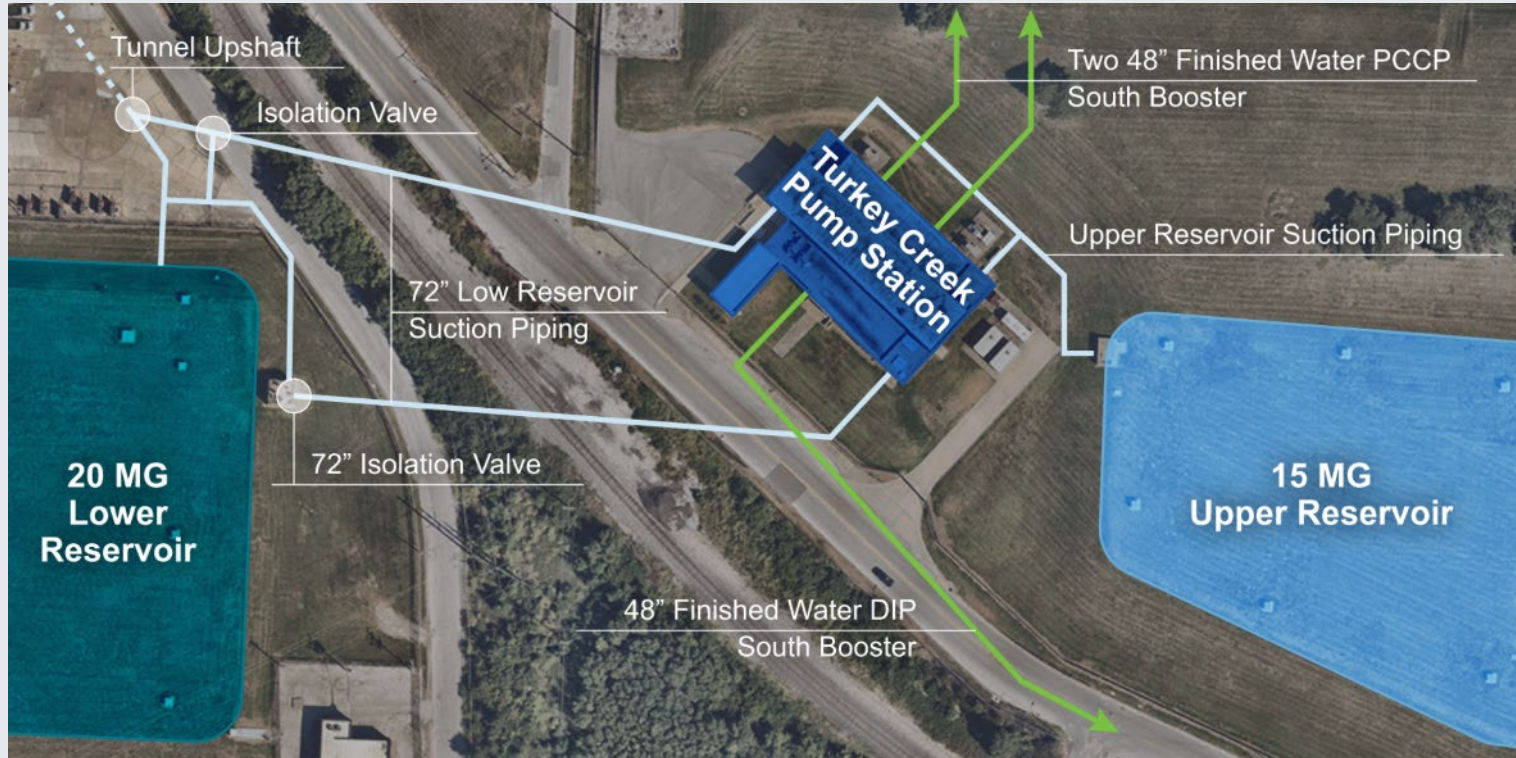
Transportation, Infrastructure & Operations  
Committee



# ORDINANCE NO. 250630



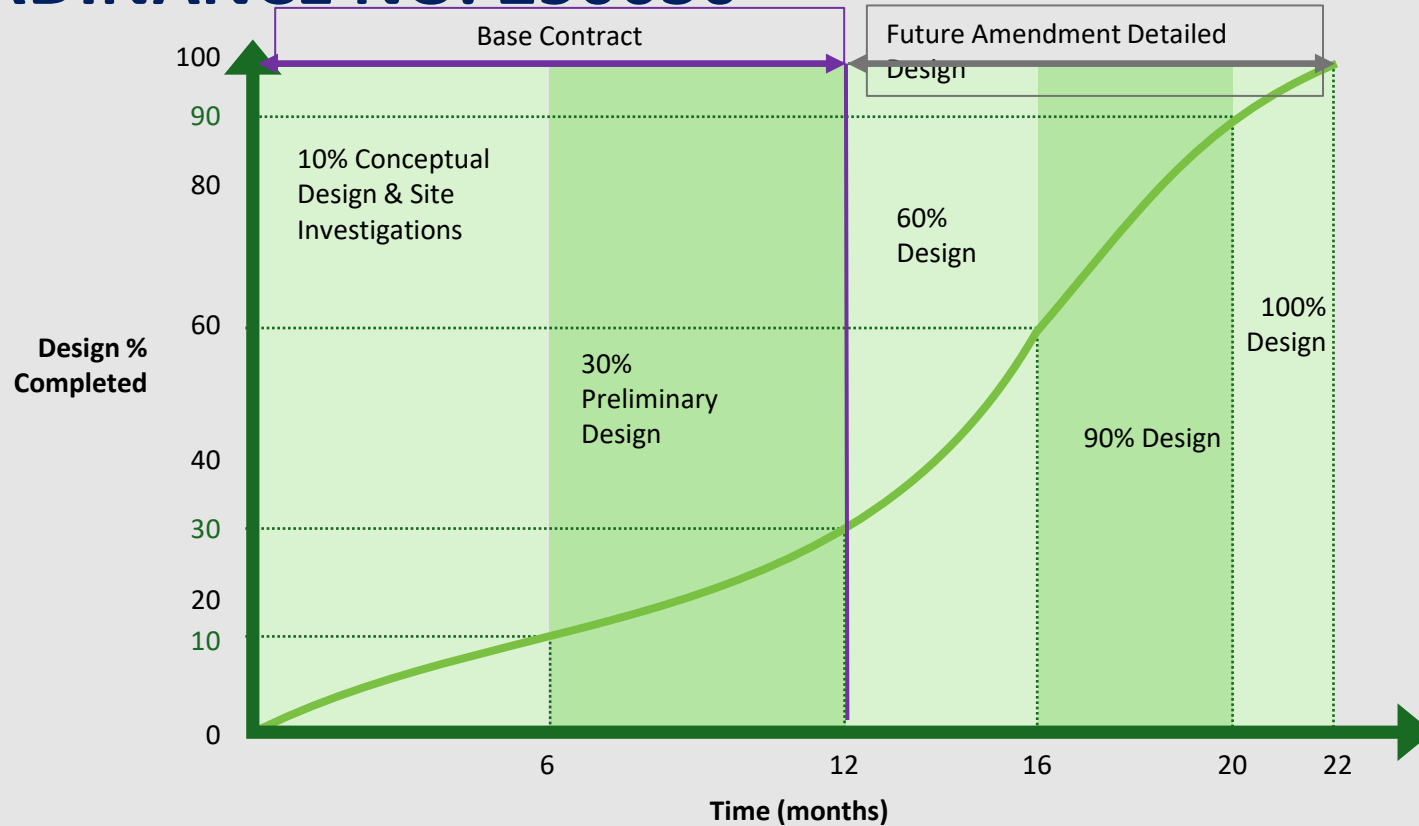
# ORDINANCE NO. 250630



Turkey Creek Pump Station and Reservoirs



# ORDINANCE NO. 250630



Standard Large Pump Station Design Timeline

# ORDINANCE NO. 250630

## M/WBE CREO KC Goals and Participation

CREO KC established goals of 14% MBE and 14% WBE on this Design Professional Services project on March 22, 2024, as part of the Annual Goal Program.

CREO KC approved the Contractor Utilization Plan on July 23, 2025, with 14% MBE and 14% WBE participation.

### MBE Firms

Custom Engineering, Inc.  
Parson & Associates, LLC  
DuBois Consultants

### WBE Firms

She Digs It, LLC  
Trek Design Group, LLC  
Environmental Advisors and Engineers, Inc.  
KMB Engineering, LLC  
Wellner Architects, Inc.

THANK YOU