



# ORDINANCE NO. 250373

## **Green Infrastructure Project 1-1: Mill Creek Park-Package # 1 – North Plaza Construction and Design Professional Services Amendment No. 3**

Authorizing a \$2,195,500.00 construction contract with MegaKC Corporation, for the Green Infrastructure Project 1-1: Mill Creek Park-Package #1 - North Plaza project; authorizing a maximum expenditure of \$2,415,000.00; authorizing a \$1,750,000.00 design professional services Amendment No. 3 to Contract No. 1611 with HDR Engineering, Inc., for the Green Infrastructure Project 1-1: Mill Creek Park project for a total contract amount of \$3,326,978.00; and recognizing this ordinance as having an accelerated effective date.

May 6, 2025

Transportation, Infrastructure & Operations  
Committee

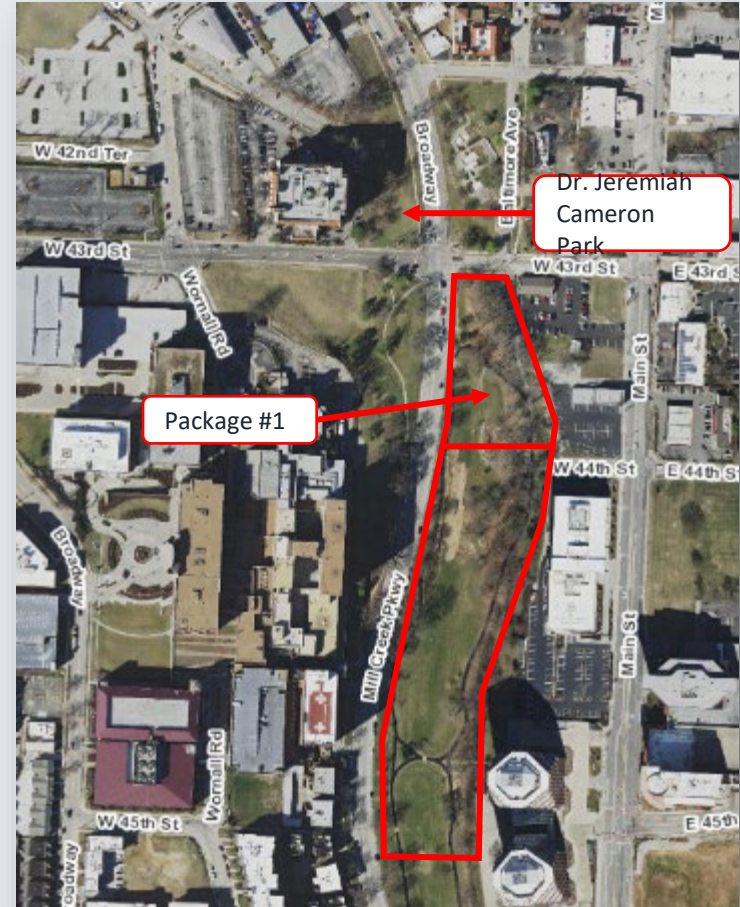


# ORDINANCE NO. 250373

## Project Description/Location:

The purpose of this project is to build a stormwater management system using green infrastructure to reduce combined sewer Overflows at Outfall 017 in the Brush Creek Basin.


This project is located within Mill Creek Park in the area of W. 43<sup>rd</sup> Street to the north, E. 45<sup>th</sup> Street to the south (or the trail loop), the limits of park to the east, and Mill Creek Parkway to the west, all in Kansas City, Jackson County, Missouri.



# ORDINANCE NO. 250373

## PUBLIC ENGAGEMENT

- Public information sheet posted [www.kcsmartsewer.us/green-infrastructure-mill-creek-park](http://www.kcsmartsewer.us/green-infrastructure-mill-creek-park)
- Public meeting planned for spring 2025 to share updates and schedule, introduce the contractor
- Past engagement – 2021-2023
  - Survey collected park preferences and ideas – 96 responses
  - Virtual public meeting shared project purpose, engagement process, prioritization exercise
  - Three meetings with Mill Creek Park Board



## INFRASTRUCTURE UPDATE

### Green Infrastructure Project 1-1: Mill Creek Park

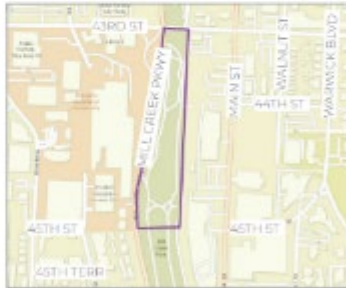
**PHASE ONE CONSTRUCTION BEGINS LATE SPRING/EARLY SUMMER 2025**

KC Water is undertaking a green infrastructure project in Mill Creek Park. This project will largely utilize bioretention basins filled with native plants to help absorb excess stormwater. These elements will collect, treat, and infiltrate stormwater runoff. When complete, this project will help protect our community's environment by capturing stormwater before it enters the combined sewer system, which will lessen the sewer overflows into local waterways.

### Project Area

This project is located north of the Missouri river. The boundaries are:

- NORTH: 43rd Street
- SOUTH: 45th Street
- EAST: East edge of park
- WEST: Mill Creek Parkway



### QUESTIONS?

Primary Contact	Project Team	
<b>KYLE TOMJES</b> Project Manager Bureau of Stormwater (816) 631-2551 <a href="mailto:kyle.tomjes@kcwater.com">kyle.tomjes@kcwater.com</a>	<b>ABBY SANDSOTHE</b> Design Professional HNTB Engineering, Inc. (816) 562-2732 <a href="mailto:abby.sandsotthe@hntb.com">abby.sandsotthe@hntb.com</a>	<b>ANDY SHIVELY</b> Deputy Director KC Water (816) 513-0104 <a href="mailto:andy.shively@kcwater.org">andy.shively@kcwater.org</a>

# ORDINANCE NO. 250373

## M/WBE CREO KC Goals

CREO KC established goals of 15% MBE and 10% WBE on this design professional services project on August 8, 2020.

### MBE Firms

DuBois Consulting, Inc.  
Parson & Associates  
Taliaferro and Brown, Inc.  
Tsi Geotechnical, Inc.

### WBE Firms

TREKK Design Group

# ORDINANCE NO. 250373

## M/WBE CREO KC Goals

CREO KC established goals of 6% MBE and 6% WBE on this Construction project on March 3, 2025.

### MBE Firms

Carpio Masonry, LLC

### WBE Firms

Abay Construction, Inc.

THANK YOU