



KANSAS CITY MISSOURI

Docket #4

CD-ROW-2024-00015

Vacation of Right of Way

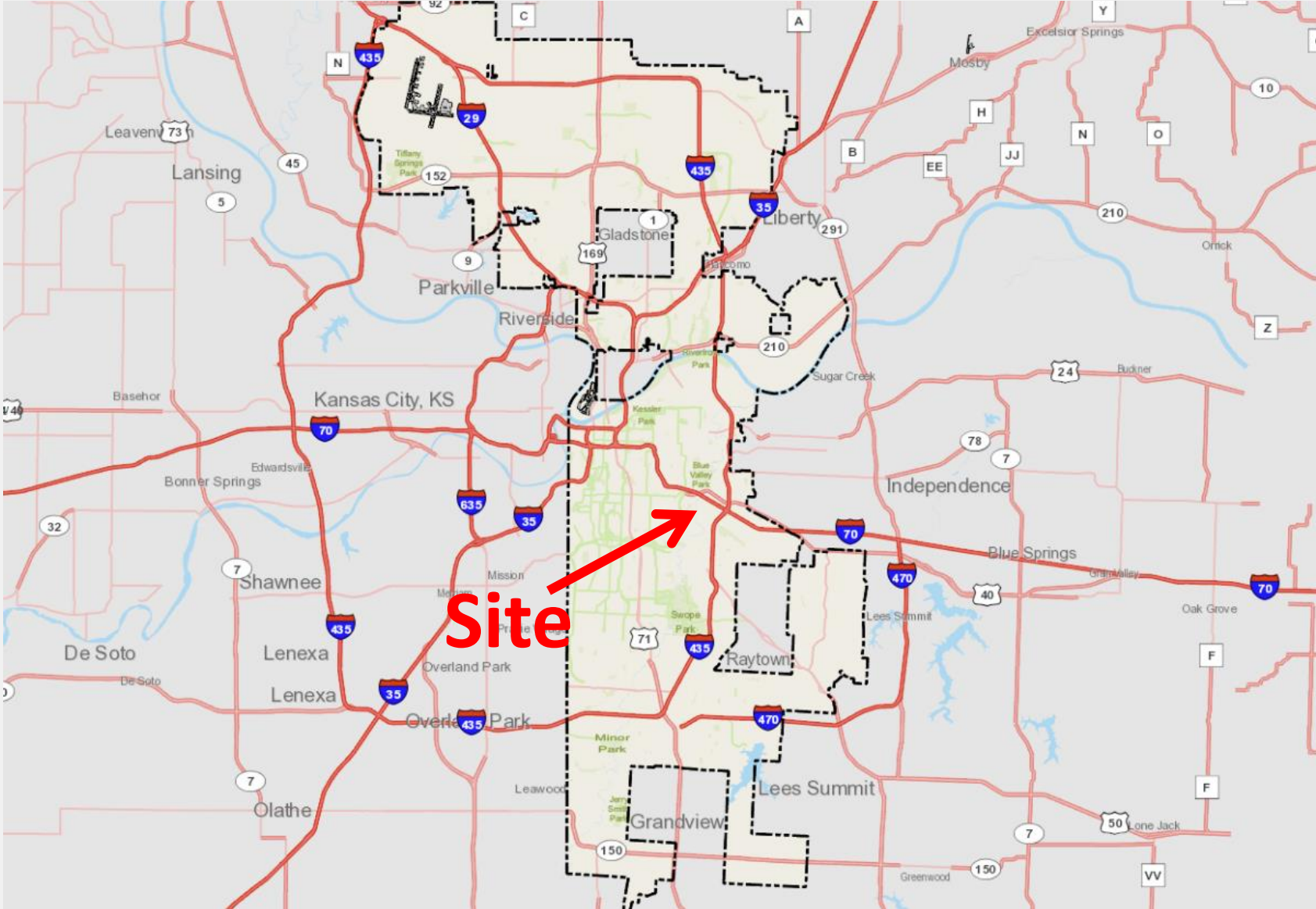
Topping Avenue Street Vacation

September 4th, 2023

City Plan Commission



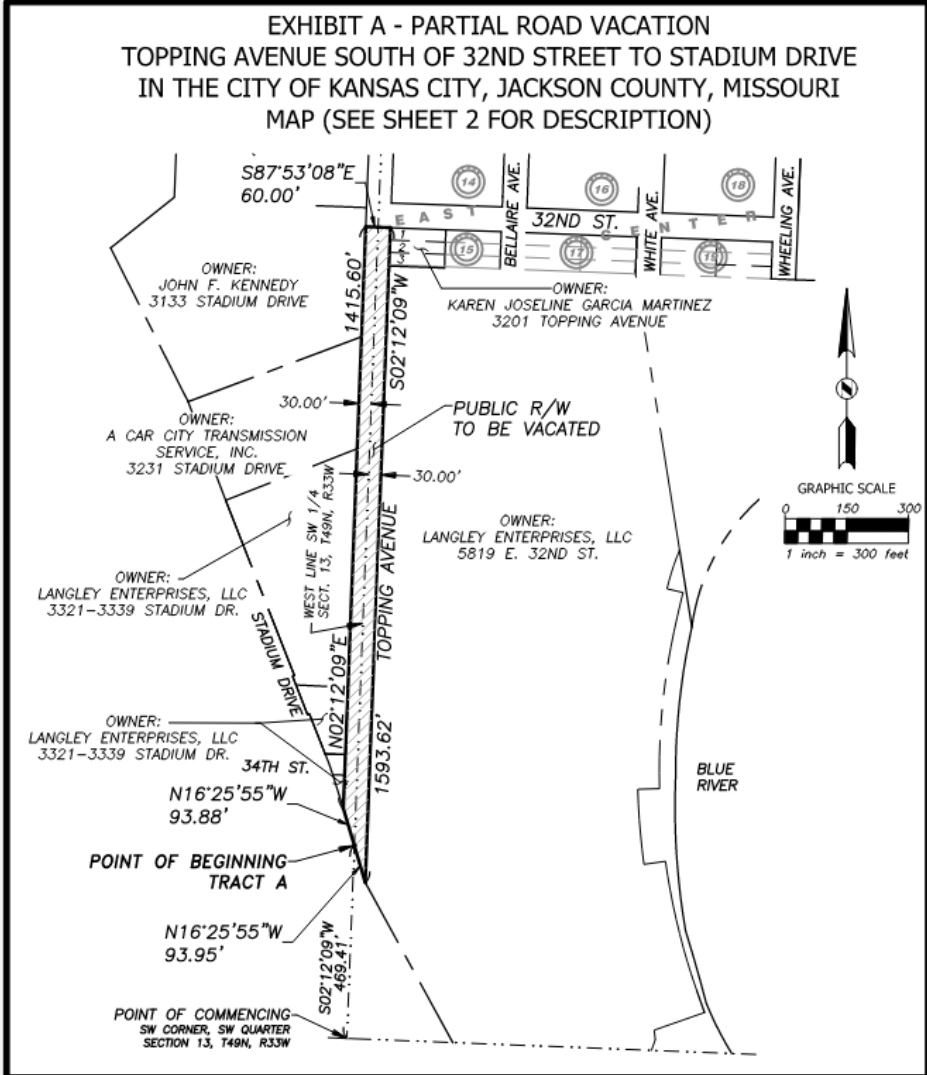
Location



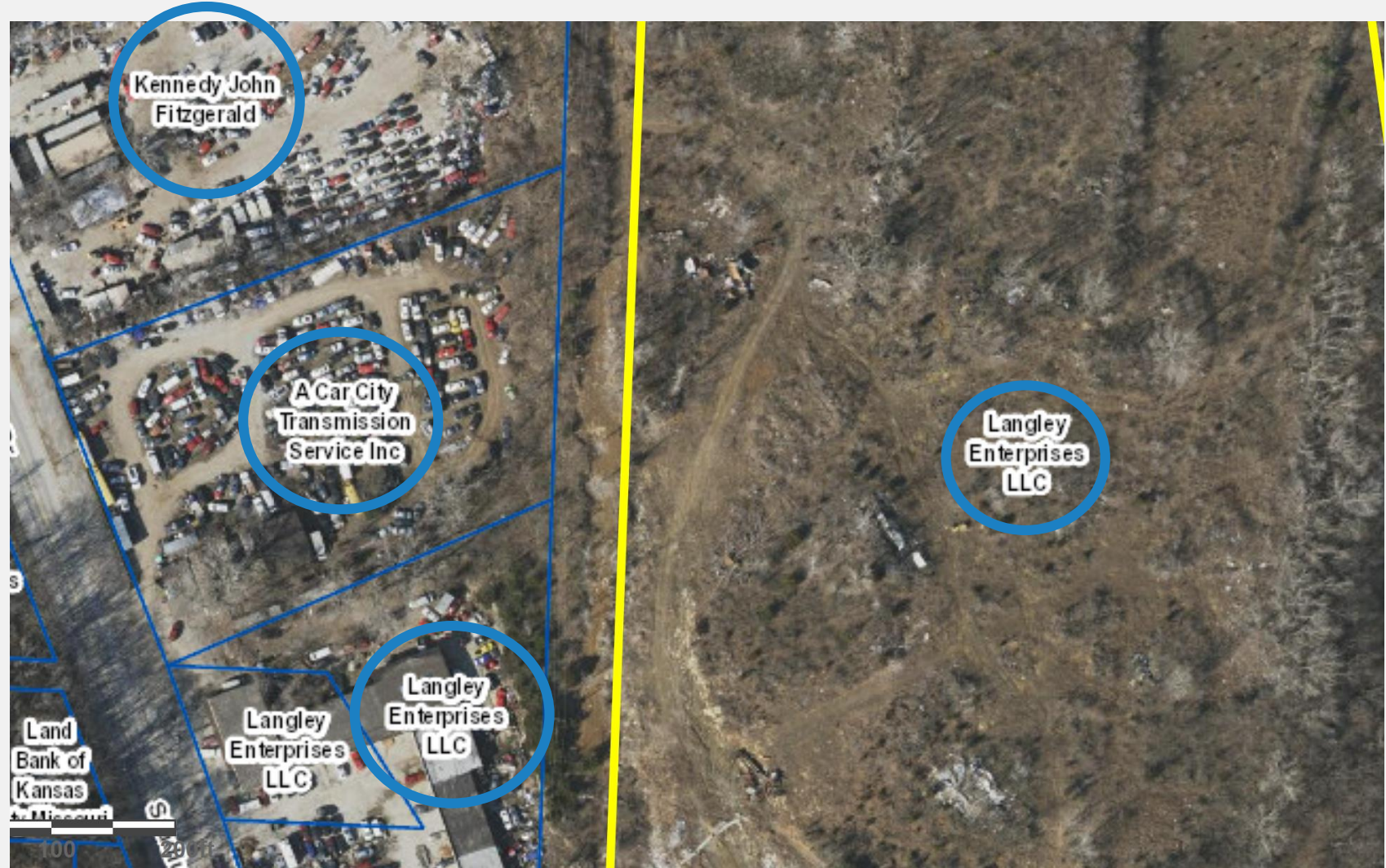
Location



Location



Owner



Vacation Key Notes

- Application is proposing 84k sqft of ROW Vacated
- Owner is responsible for retaining easements for any private or public infrastructure
 - Water Services, Evergy and AT&T have facilities in ROW
- Goal is to develop 5819 E 32nd St and utilize ROW around subject site

Looking south
from the
intersection of
E 32nd St &
Topping Ave.



**Looking
North on the
corner of
Stadium Dr.
and E 34th Ter.**



Staff Recommendation

Approval Subject to Conditions

Case No. CD-ROW-2024-00015

Docket #5
CD-ROW-2024-00019
Vacation of Right of Way

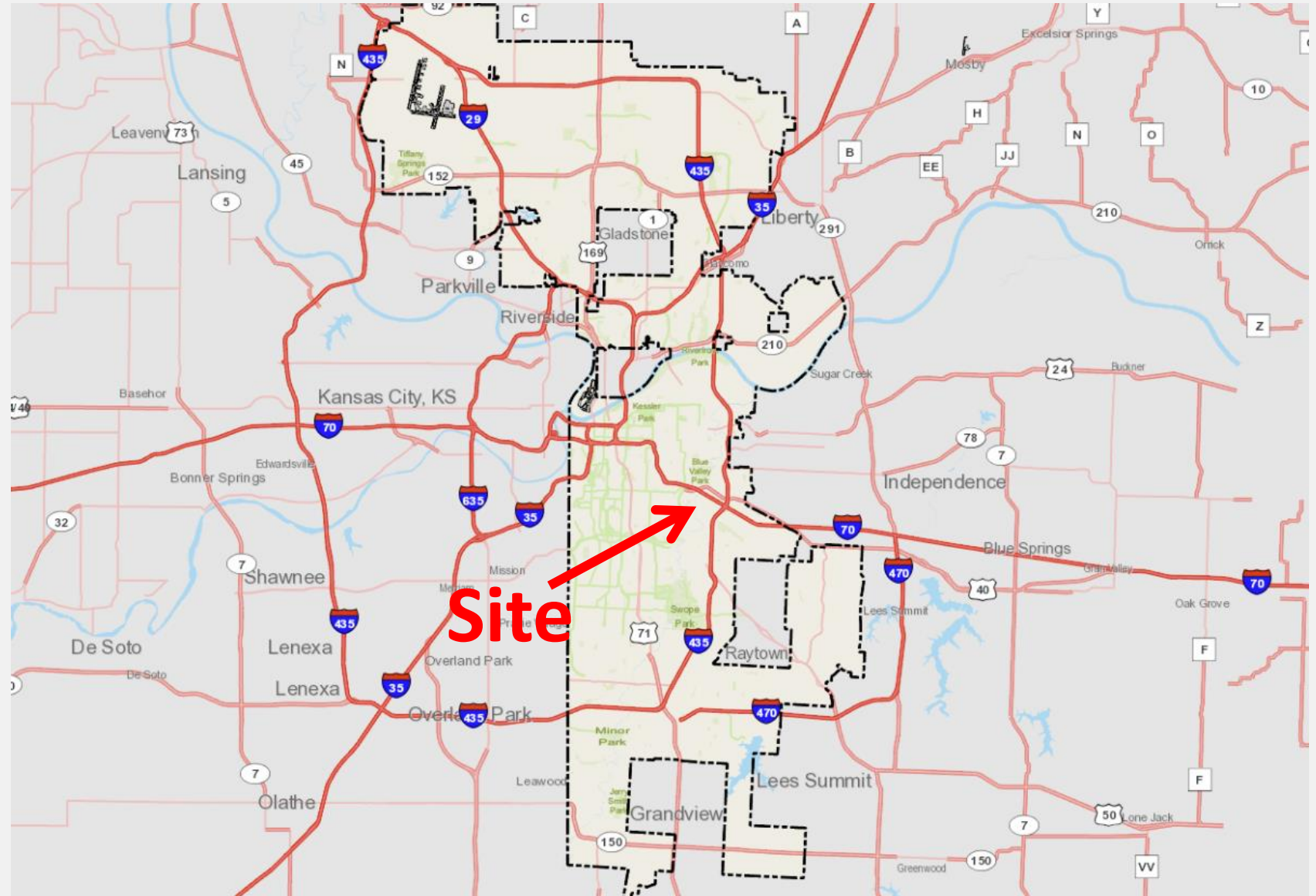
Bellaire Avenue Street Vacation

September 4th, 2023

City Plan Commission



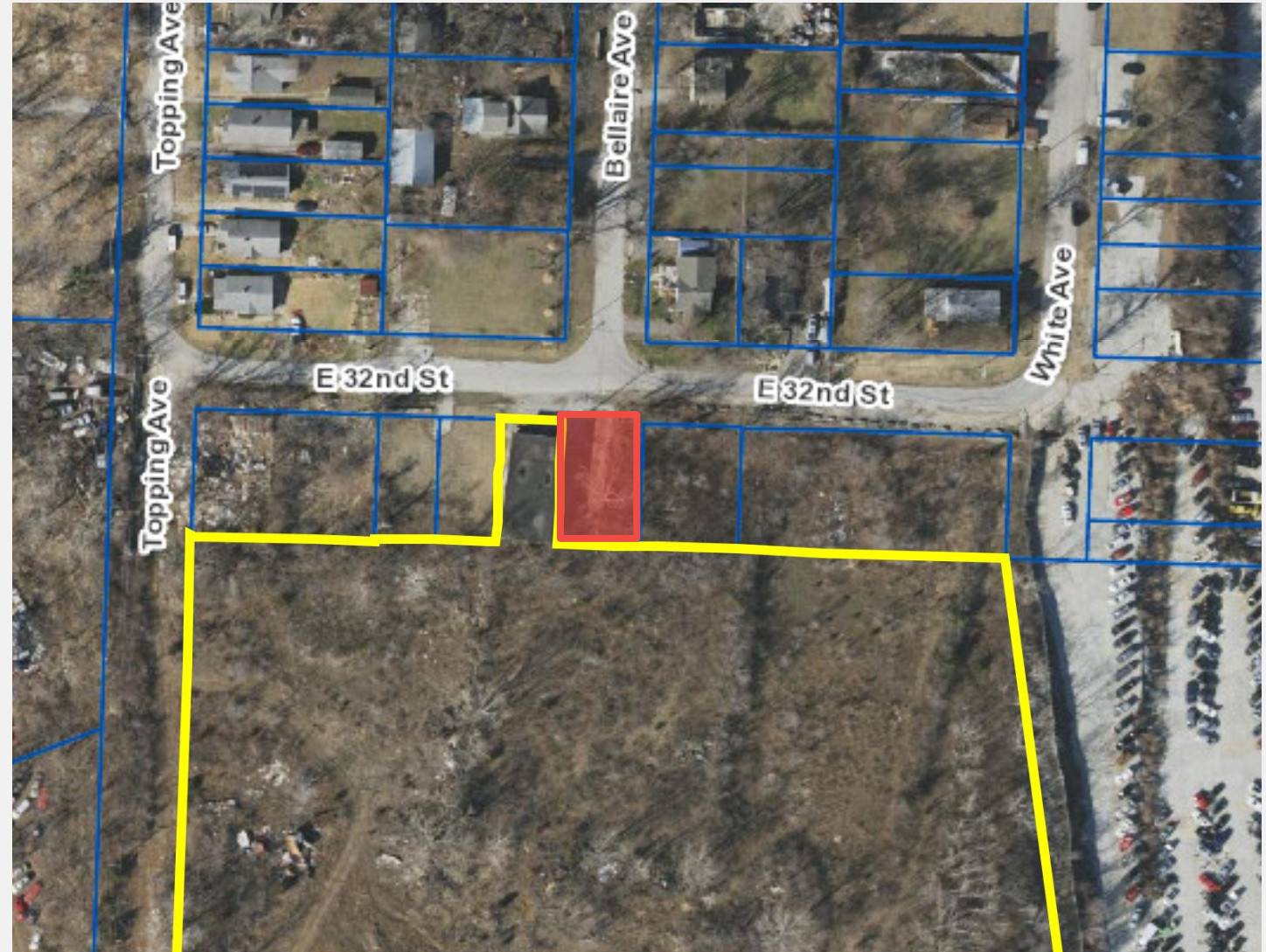
Location



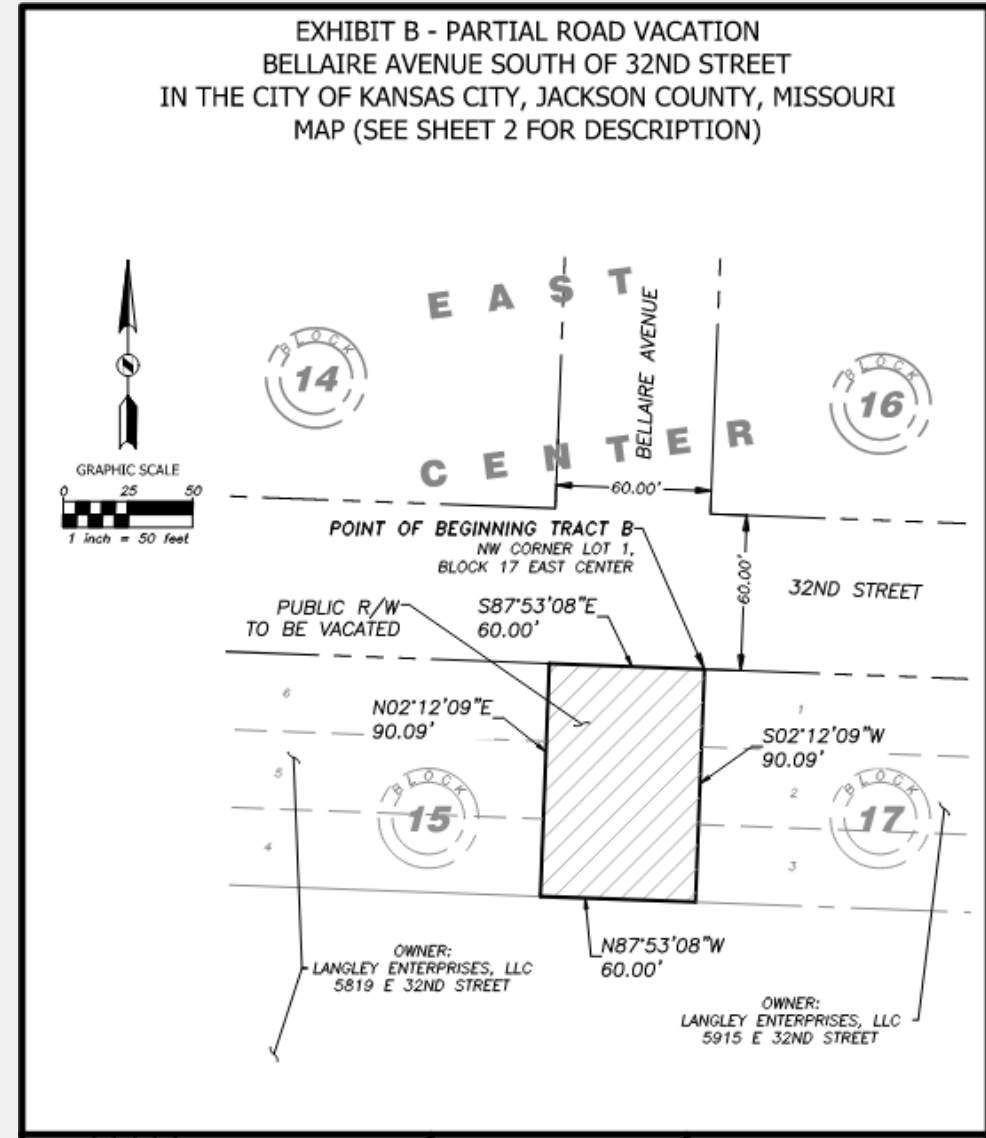
Location



Location



Location



Looking south
from the
intersection of
E 32nd St &
Topping Ave.



Looking south
from the
intersection of
E 32nd St &
Topping Ave.



Vacation Key Notes

- Application is proposing 5400 sqft of ROW Vacated
- Owner is responsible for retaining easements for any private infrastructure
 - Evergy has facilities in ROW
- Goal is to develop 5819 E 32nd St and utilize ROW around subject site

Staff Recommendation

Approval Subject to Conditions

Case No. CD-ROW-2024-00019