









OWNERSHIP INFORMATION		
PARCEL NO.	OWNER	ADDRESS
7	STE 104	BELCORE ANN MARIE 7425 FONTANA ST PRAIRIE VILLAGE, KS 66208
	STE 202	AHLQUIST CONNOR AND HANNAH-RAE 4516 BROADWAY AVE UNIT 2B KANSAS CITY, MO 64111
	STE 102	VILLANUEVA MARIA 4516 BROADWAY UNIT 102 KANSAS CITY, MO 64111
	STE 203	GAUR NEETA & RAKESH 14543 MOHAWK CIR LEAWOOD, KS 66224
	STE 301	SNYDER MCKENZIE M 4516 BROADWAY UNIT 3-A KANSAS CITY, MO 64111
	STE 302	MUSICK KELLI 4516 BROADWAY UNIT 301 KANSAS CITY, MO 64111
	STE 304	HAWKINS SAWYER GRAY 4516 BROADWAY UNIT 304 KANSAS CITY, MO 64111
	STE 201	SMILEY TYLER 4518 BROADWAY UNIT 2A KANSAS CITY, MO 64111
	STE 303	ROSKOP ALIE L 4516 BROADWAY UNIT 3D KANSAS CITY, MO 64111
	STE 101	WAMBUGU DANIEL 4615 BROADWAY BLVD UNIT 1A KANSAS CITY, MO 64111
	STE 204	5A LLC 3 EASTGATE DR HILL CITY, KS 67442
	46 BROADWAY PARTNERS LLC COHEN-ESREY	500 SHAWNEE MISSION PKWY STE L5 MISSION, KS 66202
8	43 MADISON LLC	4510 MADISON AVE STE L103 KANSAS CITY, MO 64111
	STE 103	ALLAIRE GEORGE E & DEBORAH A-TRUSTEES 300 W 45TH TER UNIT 103 KANSAS CITY, MO 64111
	STE 204	WARREN STEVE & LYNN 300 W 45TH TER UNIT 204 KANSAS CITY, MO 64111
	STE 301	LESLIE D LERNER TRUST 300 W 45TH TER UNIT 301 KANSAS CITY, MO 64111
	STE 302	NELSON ROGER R & MARJORIE L 300 W 45TH TER UNIT 302 KANSAS CITY, MO 64111
	STE 102	BELT ROBERT J-TRUSTEE 300 W 45TH TER UNIT 102 KANSAS CITY, MO 64111
9	STE 201	RAMRAP HOLDINGS LLC 9711 SUNSET CIR LENEA, KS 66220
	STE 104	SPIVAK FAMILY TRUST DATED 09/28/2024 SPIVAK JEFFREY G & ELIZABETH ANN -TRUSTEES 300 W 45TH TER UNIT 104 KANSAS CITY, MO 64111
	STE 202	SULLIVAN JEFFREY L & ANDREA 300 W 45TH TER KANSAS CITY, MO 64111
	J & K WORNALL INVESTMENTS LLC	2749 A NW HUNTER DR BLUE SPRINGS, MO 64015
	STE 203	WIMER MICHAEL L & HOTZ ROBERT B 300 W 45TH TER UNIT 203 KANSAS CITY, MO 64111
	STE 101	CAROL E BACHHUBER REVOCABLE TRUST AGREEMENT 300 W 45TH TER UNIT 101 KANSAS CITY, MO 64111
	STE 804	JLC REAL ESTATE LLC 555 POYNTE AVE STE 255 MANHATTAN, KS 66502
	STE 600	LAMBDEN MYA B 4545 WORNALL RD # 600 KANSAS CITY, MO 64111
	STE 109	BALICK PAMELA 4545 WORNALL RD APT 109 KANSAS CITY, MO 64111
	UNIT LE4	HERRERA FRANCISCO OMAR 4545 WORNALL RD UNIT LE4 KANSAS CITY, MO 64111
	STE 102	B&T PLAZA PROPERTIES LLC 4545 WORNALL RD APT 102 KANSAS CITY, MO 64111
	UNIT LE6	FOWLER COLIN 4545 WORNALL RD UNIT LE-6 KANSAS CITY, MO 64111
	STE 307	ROBERT G BECKERS LIVING TRUST DATED 8/23/1999 %ROBERT G BECKERS-TRUSTEE 4545 WORNALL RD APT 802 KANSAS CITY, MO 64111
	UNIT LE1	ROBERT G BECKERS LIVING TRUST DATED 8/23/1999 %ROBERT G BECKERS-TRUSTEE 4545 WORNALL RD APT 802 KANSAS CITY, MO 64111
	STE 409	JUAREZ ANDREA 4545 WORNALL RD 409 KANSAS CITY, MO 64111
	STE 410	JERRY D SHIERMEYER REVOCABLE TRUST AGREEMENT THOMAS B THOMSEN-TRUSTEE 4545 WORNALL RD #409 KANSAS CITY, MO 64111
10	STE 1008	RODRIGUEZ PAOLA MORALES 4545 WORNALL RD UNIT 1008 KANSAS CITY, MO 64111
	STE 802	ROBERT G BECKERS LIVING TRUST DATED 8/23/1999 %ROBERT G BECKERS-TRUSTEE 4545 WORNALL RD APT 802 KANSAS CITY, MO 64111
	STE 211	JAMSHID HOORFAR LIVING TRUST 4545 WORNALL RD 211 KANSAS CITY, MO 64111
	STE 402	ROBERT G BECKERS LIVING TRUST DATED 8/23/1999 %ROBERT G BECKERS-TRUSTEE 4545 WORNALL RD APT 802 KANSAS CITY, MO 64111
	STE 704	RIVES DENNEY & LINDA 4545 WORNALL RD UNIT 704 KANSAS CITY, MO 64111
	PARKWAY TOWERS CONDO % BOARD OF MANAGERS	4545 WORNALL RD KANSAS CITY, MO 64112
	STE 1200	SHARMA NIKITA JYOTI 4545 WORNALL RD #1200 KANSAS CITY, MO 64112
	STE 1005	WALKER MICHAEL W & DUCHARDT LAURA J 4545 WORNALL RD #1004-6 KANSAS CITY, MO 64111
	STE 1111	CAROLYN GENTILE LIV TR DATED 11/06/2006 CAROLYN GENTILE TRUSTEE 4545 WORNALL RD UNIT 1111&1112 KANSAS CITY, MO 64111
	STE 1207	VAKHSHOORI SUSAN 4545 WORNALL RD #1207 KANSAS CITY, MO 64111
	WINGO DARREL W - TRUSTEE	4545 WORNALL RD UNIT 605 KANSAS CITY, MO 64111
	PEK PROPERTY LLC	4545 WORNALL RD UNIT 1002 KANSAS CITY, MO 64111
	GUTHRIE JOHN & JUDITH	4545 WORNALL RD UNIT 1111 KANSAS CITY, MO 64111
	CLEM DEBRA D & WILLIAM M	4545 WORNALL KANSAS CITY, MO 64111
	PETEETE TERRY L & SWARNAMBAL N	4545 WORNALL #901 KANSAS CITY, MO 64111

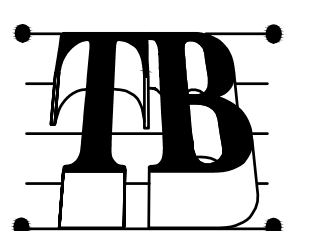
OWNERSHIP INFORMATION		
PARCEL NO.	OWNER	ADDRESS
	STE 112	SMART SALLY C & SMART SHARON M 4545 WORNALL RD UNIT 112 KANSAS CITY, MO 64111
	STE 108	DETRICK STAN 4545 WORNALL RD #108 KANSAS CITY, MO 64111
	STE 501	ROGERS CHARLES W & KAREN L 4545 WORNALL RD KANSAS CITY, MO 64111
	CURTIS C DUANE & PATRICIA	4545 WORNALL RD # 1105 KANSAS CITY, MO 64111
	STE 909	MCGARR BRIAN 4545 WORNALL RD UNIT 909 KANSAS CITY, MO 64111
	STE 602	WILLET JAMES & DANA L 8239 HYGIENE RD LONGMONT, CO 80503
	STE 603	GRAFING KEITH & EDITH 4301 MADISON AVE KANSAS CITY, MO 64111
	STE 608	CHOE LIHEA 4545 WORNALL RD UNIT 608 KANSAS CITY, MO 64111
	STE 607	KRANTSKY JANET L 4545 WORNALL RD 607 KANSAS CITY, MO 64111
	STE 700	CAUHIRON MANAGEMENT GROUP LLC 10227 E 137TH ST KANSAS CITY, MO 64149
	STE 611	PETERS STEPHEN C 4545 WORNALL RD UNIT 611 KANSAS CITY, MO 64111
	STE 612	BELL HOWARD R & ZELIA O 4545 WORNALL RD 612 KANSAS CITY, MO 64111
	STE 701	MCINTYRE AMELIA J TRUSTEE 4545 WORNALL RD UNIT 701 KANSAS CITY, MO 64111
	STE 703	COOK DONALD L & SUSAN L 4545 WORNALL RD #703 KANSAS CITY, MO 64111
	STE 708	CHERYL M PARRISH TRUST DATED 12/17/1998 CHERYL M PARRISH -TRUSTEE 4545 WORNALL RD # 708 KANSAS CITY, MO 64111
	STE 709	AMIROF CONRAD 3145 BROADWAY KANSAS CITY, MO 64111
	STE 710	AMIROF CONRAD 3145 BROADWAY KANSAS CITY, MO 64111
	STE 711	M PATRICIA KERR TRUST 12-23-2011 67 WILLOWBROOKE ST HUTCHINSON, KS 67502
10	STE 206	MMO INVESTMENTS LLC 15426 IRON HORSE CIR LEAWOOD, KS 66224
	STE 208	MOORE TONY & MAI DAU 123 S FIGUEROA ST APT 702 LOS ANGELES, CA 90012
	STE 209	MAILAND BRITTANY 4545 WORNALL RD UNIT 209 KANSAS CITY, MO 64111
	STE 212	CONLEY MICHAEL P 4545 WORNALL RD 212 KANSAS CITY, MO 64111
	STE 306	BALDWIN CONRAD C JR 4545 WORNALL 306 KANSAS CITY, MO 64111
	STE 311	DAVIS THOMAS H & HUYCKE MARGARET A 5927 CENTRAL ST KANSAS CITY, MO 64113
	STE 309	ALI MOHSIN 15211 89TH AVE APT 210 JAMAICA, NY 11432
	STE 312	CHOH JHN 4545 WORNALL RD UNIT 312 KANSAS CITY, MO 64111
	UNIT L01	RASMUSSEN ANNETTE 4545 WORNALL RD UNIT 101 KANSAS CITY, MO 64111
	UNIT L02	DIANNE J BOYD TRUST DIANNE J BOYD-TRUSTEE 4545 WORNALL RD UNIT LO-2 KANSAS CITY, MO 64111
	STE 405	GUENTHER NICOLE-TR 4545 WORNALL RD 405 KANSAS CITY, MO 64111
	STE 406	GUENTHER NICOLE-TR 4545 WORNALL RD 405 KANSAS CITY, MO 64111
	STE 407	COMBEST NANCY M 4545 WORNALL RD 407 KANSAS CITY, MO 64111
	UNIT LE3	BONAR REX A & SUSAN M 4545 WORNALL RD UNIT LE3 KANSAS CITY, MO 64111
	STE 411	DANIEL ROBERT A 8242 SHAW RD BROOKSVILLE, FL 34602
	STE 502	DYORAK JOHN A & ZIMMERMAN LEANN 4545 WORNALL RD #502 KANSAS CITY, MO 64111
	UNIT LE7	TAO JING 545 WORNALL RD LE-7 KANSAS CITY, MO 64111
	STE 100	FREDERICK RIGBY BARNES III & NANCY DUPRE BARNES REVOCABLE LI 4545 WORNALL RD UNIT 100 KANSAS CITY, MO 64111
	UNIT LE8	WARFROD TOM & EVAH M 4545 WORNALL RD UNIT 201 KANSAS CITY, MO 64111
	STE 503	GOVER HELEN L TRUSTEE 4545 WORNALL RD APT 503 KANSAS CITY, MO 64111
	STE 105	WITT DAN & SANDI 350 W 9TH HOISINGTON, KS 67544
	STE 101	HERRON CLINT W & CHAVEZ HERRON SERGIO A 229 WARD PKWY 401B KANSAS CITY, MO 64112
	STE 103	RYAN DANIEL & ROBIN 4545 WORNALL RD UNIT 103 KANSAS CITY, MO 64111
	STE 906	BLAKENEY JOHN 4545 WORNALL RD UNIT 905-906 KANSAS CITY, MO 64111
	STE 907	LEE ANN Y 4545 WORNALL RD 907 KANSAS CITY, MO 64112
	STE 910	BRUNO MARY 4545 WORNALL # 910 KANSAS CITY, MO 64111
	STE 911	JENSEN JACQUELINE 4545 WORNALL RD APT 911 KANSAS CITY, MO 64111

OWNERSHIP INFORMATION		
PARCEL NO.	OWNER	ADDRESS
	STE 1000	POUND LEE ELLIFF & DONALD M 400 BELLE AIR PLACE CARTHAGE, MO 64063
	STE 1011	NASH JULIE A-TRUSTEE 4545 WORNALL RD # 1001 KANSAS CITY, MO 64111
	STE 1012	HOLM REAL ESTATE ABILENE LLC PO BOX 428 ABILENE, KS 67410
	STE 1007	BATSCHLEIT JOHN A 4545 WORNALL RD 1007 KANSAS CITY, MO 64111
	STE 1101	SKEENS PARKWAY TOWERS 1101 LLC 4545 WORNALL RD UNIT 1101 KANSAS CITY, MO 64111
	STE 1107	ARAMOON SAEID & MAHMASH 4545 WORNALL RD # 1107 KANSAS CITY, MO 64112
	STE 1109	BRENDE SHANNA 4545 WORNALL RD APT 1109 KANSAS CITY, MO 64111
	STE 1110	TAYLOR TIMOTHY & SHERRY 4545 WORNALL RD UNIT 1110 KANSAS CITY, MO 64111
	STE 801	BRADBURY DANIEL J & JOBETH TRUST 4545 WORNALL RD APT 805 KANSAS CITY, MO 64111
	STE 806	BRADBURY DANIEL J & JOBETH TRUST 4545 WORNALL RD APT 805 KANSAS CITY, MO 64111
	STE 808	SCHWARZ JOAN E 4545 WORNALL # 808 KANSAS CITY, MO 64130
	STE 809	MILLER PHILLIP & ANAMARIA 14601 CARTER RD OVERLAND PARK, KS 66221
	STE 810	WELNSZ MELISSA 4545 WORNALL RD APT 810 KANSAS CITY, MO 64111
	STE 811	BLOBAUM MELODEE 4545 WORNALL RD UNIT 811 KANSAS CITY, MO 64111
	STE 812	CERO MARIA TRUST 4545 WORNALL 812 KANSAS CITY, MO 64111
	STE 902	SARAPH PRASAD V & PATHAK SEEMANTINI M 4545 WORNALL RD APT 902 KANSAS CITY, MO 64111
	STE 905	BLAKENEY JOHN 4545 WORNALL RD UNIT 905-906 KANSAS CITY, MO 64111
	STE 302	DEWEY THOMAS E 4545 WORNALL UNIT 302 KANSAS CITY, MO 64111
	STE 408	EQUITY TRUST COMPANY CUSTODIAN FBO CURTIS JAY IRA 5705 W 148TH PL OVERLAND PARK, KS 66223
10	UNIT L03	MILLER NANCY A & MILLER LESLIE J 1 DEER PARK RD GREAT NECK, NY 11024
	STE 904	SPEARMAN ROBB & SOCK HOON 909 56TH WEST DES MOINES, IA 50266
	STE 604	MCGINNNESS LELAND R 4545 WORNALL RD 604 KANSAS CITY, MO 64111
	STE 207	LAZERE LOIS & ROBERT-TR 4545 WORNALL RD 207 KANSAS CITY, MO 64111
	STE 1108	MCCLELLAN KELSEY 4545 WORNALL RD UNIT 1108 KANSAS CITY, MO 64111
	UNIT LE2	REISER JOAN E 4545 WORNALL RD LE-2 KANSAS CITY, MO 64111
	STE 202	SKEENS PROPERTIES LLC 1000 W 58TH ST KANSAS CITY, MO 64113
	STE 912	JONES FAMILY TRUST 05/01/2020 HOWARD E & CAROLYN C JONES TRUSTEES PO BOX 787 HEBER SPRINGS, AR 72543
	STE 805	BRADBURY DANIEL J & JOBETH TRUST 4545 WORNALL RD APT 805 KANSAS CITY, MO 64111
	STE 1210	MAYERDIRK MARK A & NANCY S 4545 WORNALL APT 1210 KANSAS CITY, MO 64111
	STE 512	WOODLEY ROBERY 4545 WORNALL RD UNIT 512 KANSAS CITY, MO 64111
	UNIT L03	BONAR REX A & SUSAN M 4545 WORNALL RD UNIT LE3 KANSAS CITY, MO 64111
	STE 411	DANIEL ROBERT A 8242 SHAW RD BROOKSVILLE, FL 34602
	STE 502	DYORAK JOHN A & ZIMMERMAN LEANN 4545 WORNALL RD #502 KANSAS CITY, MO 64111
	UNIT L04	HALL BRIGID D & JAMES M IV-TRUSTEES 231 FAIRDAL RD SALINA, KS 67401
	STE 400	CRAWFORD RAY & DON 4545 WORNALL UNIT 400 KANSAS CITY, MO 64111
	UNIT L05	WIEDERHOLT JOHN M & JESSICA N 4545 WORNALL RD # L05 KANSAS CITY, MO 64111
	STE 201	LOH PROPERTY LLC 4545 WORNALL RD UNIT 201 KANSAS CITY, MO 64111
	STE 205	WALDEN PATRICK F & BARBARA A 1302 N PRESCOTT ST WICHITA, KS 67212
	STE 210	SADLER INVESTMENT PROPERTIES INC 116 LOWES FOOD DR PWB 303 LEWISVILLE, NC 27023
	STE 305	OLYAEI TRUST DATED 10-04-2013 OLYAEI MOJTABA & OLYAEI MARYAM S-TRUSTEES 15426 IRON HORSE CIR LEAWOOD, KS 66224
	STE 706	JANA GOLDSICH REVOCABLE TRUST DATED 10/05/2016 4545 WORNALL RD 705-706 KANSAS CITY, MO 64111
	STE 707	WATSON JOE A & BECKY A 5316 LOCUST CT OSAGE BEACH, MO 65065
	STE 807	KOEHLER JEROME S JR-TRUSTEE 5410 STATE LINE RD MISSION HILLS, KS 66208
	STE 903	LEWIS FAMILY IRREVOCABLE TRUST DATED 03/13/2024 2012 W 48TH ST WESTWOOD, KS 66205

OWNERSHIP INFORMATION		
PARCEL NO.	OWNER	ADDRESS
	STE 1009	EAST WEST PROPERTIES LLC 705 B SE MELODY LN UNIT 341 LEE'S SUMMIT, MO 64063
	STE 1103	KOEHLER JEROME S JR-TRUSTEE 5410 STATE LINE RD MISSION HILLS, KS 66208
	STE 705	JANA GOLDSICH REVOCABLE TRUST DATED 10/05/2016 4545 WORNALL RD 705-706 KANSAS CITY, MO 64111
	STE 1104	HARTMAN KRISTINA D ANN & HOLDER SCOTT G 2408 SW REGENCY DR LEE'S SUMMIT, MO 64082
	STE 107	SHEPHERD CHRISTELLA L 13315 CORNINGTON AVE GRANDVIEW, MO 64030
	STE 412	ADAMS TODD M 1247 ARBORSIDE DR AURORA, IL 60502
	STE 504	OGREN MARK W-TRUSTEE 545 WORNALL RD UNIT 504 KANSAS CITY, MO 64111
	STE 505	NIKNAM NAHAL & NAMIN FARID M 4340 WARWICK BLVD KANSAS CITY, MO 64111
	STE 506	NIKNAM NAHAL & NAMIN FARID M 4340 WARWICK BLVD KANSAS CITY, MO 64111
	STE 507	BARBARA M KNAUF TRUST DATE 06/20/1995 % BARBARA KNAUF TRUSTEE 143 ISLAND WAY GREEN ACRES, FL 33413
	STE 508	GREGORY EPY MICHELE 4545 WORNALL RD UNIT 508 KANSAS CITY, MO 64111
	STE 908	YASA SARP TURGUT 4545 WORNALL RD UNIT 908 KANSAS CITY, MO 64111
	STE 1102	RUETER STEVEN WAYNE 4545 WORNALL RD UNIT 1102 KANSAS CITY, MO 64111
	STE 310	SSPL INVESTMENTS LLC 4310 KARNES RD SAINT JOSEPH, MO 64506
	STE 1201	HOWE SAMUEL F & KATHLEEN SCHMIEDELER 4545 WORNALL RD APT 1202 KANSAS CITY, MO 64111
	STE 104	MCCLELLAN MARIAN 4545 WORNALL UNIT 104 KANSAS CITY, MO 64111
	STE 203	CONNOLLY STEPHEN G-TRUSTEE 805 W MONTEREY AVE STOCKTON, CA 95204
	STE 204	BROWN ASHLEE 4545 WORNALL RD UNIT 204 KANSAS CITY, MO 64111
	STE 510	PHILLIPS FAMILY REVOCABLE TRUST C/O N WILLIAM PHILLIPS 4545 WORNALL RD # 510 KANSAS CITY, MO 64111
	STE 511	PHILLIPS FAMILY REVOCABLE TRUST C/O N WILLIAM PHILLIPS 4545 WORNALL RD # 510 KANSAS CITY, MO 64111
	STE 1202	HOWE SAMUEL F & KATHLEEN SCHMIEDELER 4545 WORNALL RD APT 1202 KANSAS CITY, MO 64111
	STE 401	LABAYOG JO-MEL S & DOROTA 82 THORNHILL DR DANVILLE, IL 61832
	STE 702	COSTELLO JOHN K & DECKER CAROLE J TRUSTEE 4545 WORNALL RD UNIT 702 KANSAS CITY, MO 64111
	STE 301	WALLINGFORD NANCY A 4545 WORNALL STE 301 KANSAS CITY, MO 64111
	STE 303	MURPHY ALINDA 4545 WORNALL RD UNIT 303 KANSAS CITY, MO 64111
	STE 308	ORDO NATHAN 4545 WORNALL RD APT 308 KANSAS CITY, MO 64111
	STE 403	GOLDENBELL REAL ESTATE LLC 1715 W 39TH ST 207 KANSAS CITY, MO 64111
	STE 509	KENNETH G SAYLER REVOCABLE LIVING TRUST 4553 PLUMSTEAD DR VIRGINIA BEACH, VA 23462
	STE 601	WILLIAMS MOLLY K 4545 WORNALL RD UNIT 601 KANSAS CITY, MO 64111
	STE 609	ROBINSON REAGAN 4545 WORNALL 609 KANSAS CITY, MO 64111
	STE 712	PEOPLE FOR THE ETHICAL TREATMENT OF 712 PARKWAY TOWERS 4545 WORNALL RD KANSAS CITY, MO 64111
	STE 106	SMITH SHELLEY 4545 WORNALL RD UNIT 106 KANSAS CITY, MO 64111
	STE 1204	LARRABEE FAMILY TRUST DATED 9/2/2021 4545 WORNALL RD UNIT 1205 KANSAS CITY, MO 64111
	STE 1205	LARRABEE MARK R & AIMEE G 4545 WORNALL RD APT 1205 KANSAS CITY, MO 64111
	STE 1206	LARRABEE MARK R & AIMEE G 4545 WORNALL RD APT 1205 KANSAS CITY, MO 64111
	STE 803	OSMUNDSON DAVID & JEANETTE 4545 WORNALL UNIT 803 KANSAS CITY, MO 64111
	STE 300	GAITA JOHN & NORA SALIH 4545 WORNALL RD UNIT 300 KANSAS CITY, MO 64111
	STE 200	TAUNTON ROMA L 4545 WORNALL RD APT 200 KANSAS CITY, MO 64111
	UNIT LE5	POPE ERNESTINE 4545 WORNALL RD UNIT LE 5 KANSAS CITY, MO 64111
	STE 305	OLYAEI TRUST DATED 10-04-2013 OLYAEI MOJTABA & OLYAEI MARYAM S-TRUSTEES 15426 IRON HORSE CIR LEAWOOD, KS 66224
	STE 1100	MCDILL RYAN 4545 WORNALL RD UNIT 1100 KANSAS CITY, MO 64111
	STE 1209	BURKE MICHAEL-TRUSTEE 4545 WORNALL RD UNIT 1209 KANSAS CITY, MO 64111
	STE 404	ELCHOS MARK 4545 WORNALL RD UNIT 404 KANSAS CITY, MO 64111
11	SUMMIT HOSPITALITY 138 LLC SUMMIT HOTEL PROPERTIES 12600 HILLCOUNTRY BLVD STE R-100 AUSTIN, TX 78738	4600 MILL CREEK PKWY KANSAS CITY, MO 64111



Architect of Record:  
BRR Architecture, Inc.  
813 N. METCALF AVE.  
SUITE 200  
OVERLAND PARK, KS 66204



Taliaferro & Browne, Inc.  
Civil / Structural Engineering,  
Landscape Architecture & Surveying  
1020 E. 8th Street, KC/MO 64106  
Ph (816) 283-9450  
Fax (816) 283-0810

**Copyright Notice**  
This drawing was prepared for use on a specific site. It is not to be used on any other project site or at a later time. Use of this drawing for reference or expansion on another project requires the services of the original architect and engineers. Reproduction of this drawing for use on another project is not authorized and may be prosecuted to the full.

**Issues &**

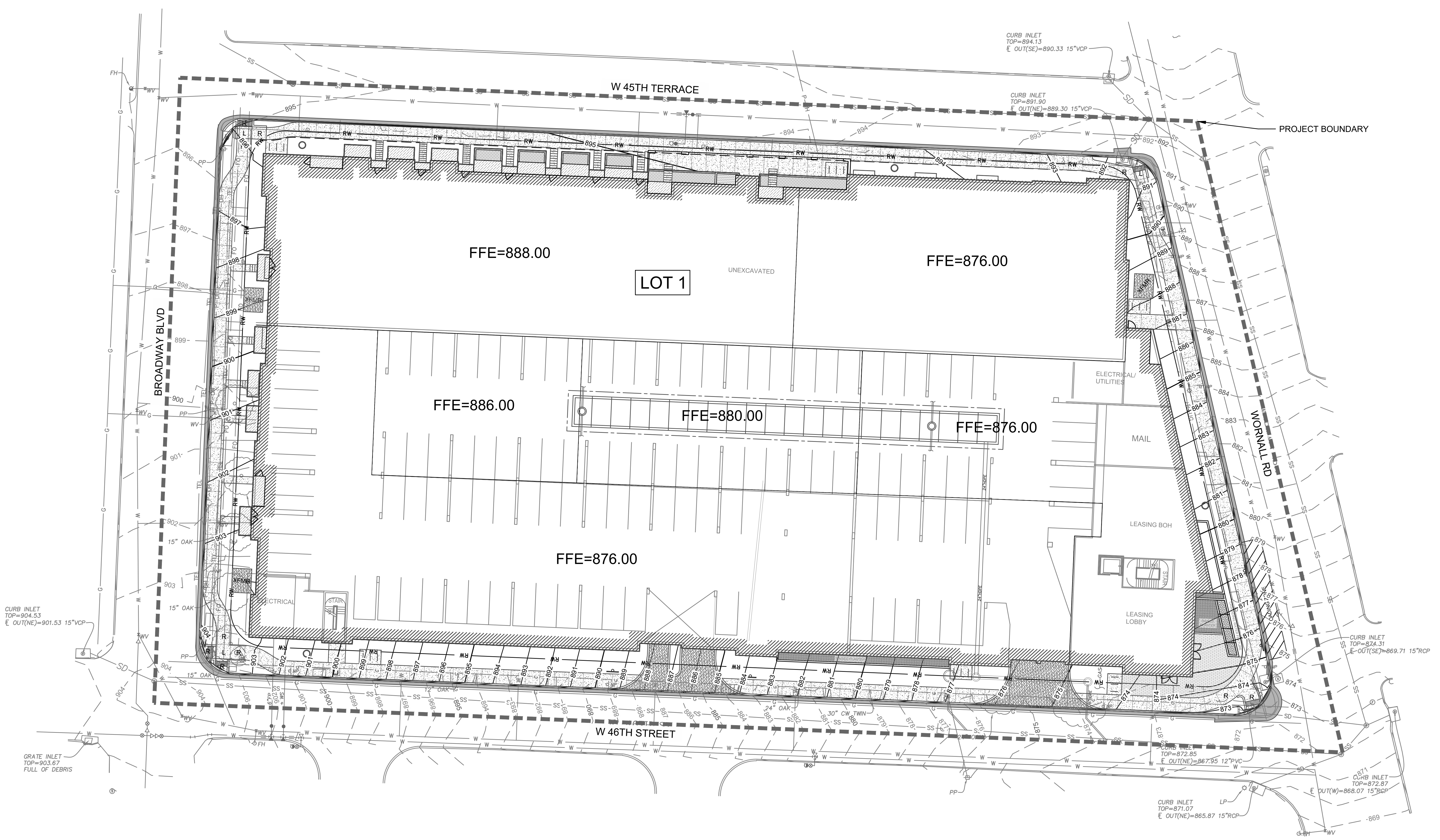










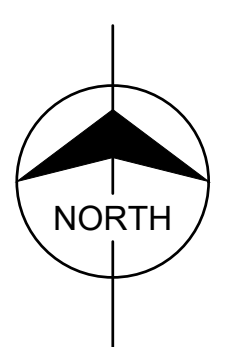


GARAGE GROUND FLOOR

**City Plan Commission**  
 Recommends Approval with Conditions  
 of Case No. CD-CPC-2025-00013 on 03/19/2025

Jane Gabriel  
 Secretary of the City Plan Commission

**LEGEND**  
 ■■■■ PROJECT BOUNDARY



20 0 20 40  
 SCALE IN FEET  
 HORIZONTAL SCALE 1"=20'

**Issues & Revisions**

NO.	DATE	DESCRIPTION

Project Name

A NEW MIXED USE BUILDING FOR:  
**PLAZA MULTI-FAMILY**  
 W 46TH STREET & WORNALL ROAD  
 KANSAS CITY, MISSOURI

Project Manager:  
 LBN

Checked By:  
 LBN

Drawn By:  
 VL

Document date:  
 1/24/24

Project No.  
 31000657

Project Phase  
 CPC SUBMITTAL

Professional Seal

NOT FOR CONSTRUCTION  
 NOT FOR GMP PRICING























































