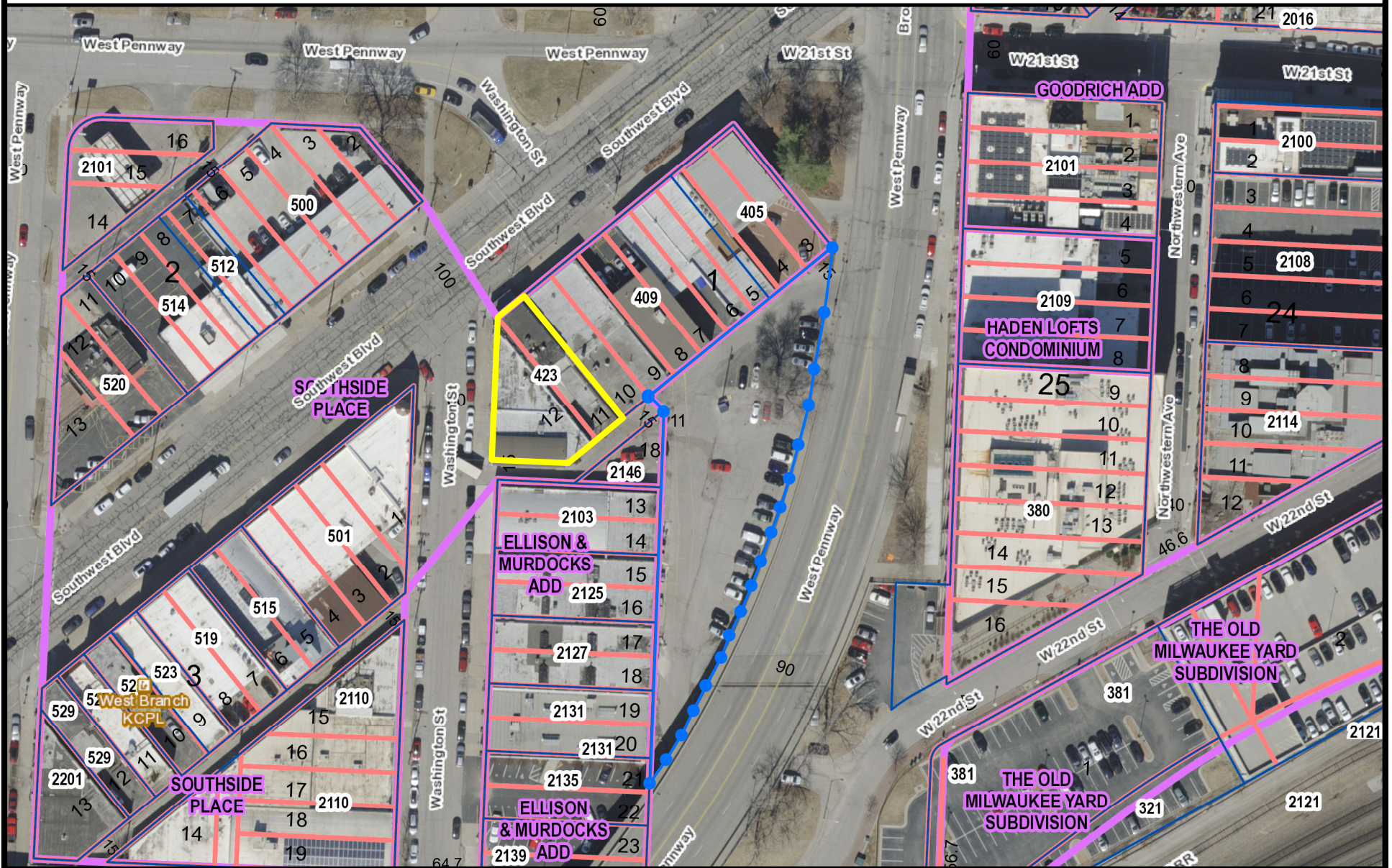
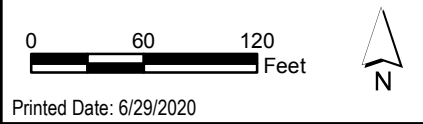


Southwest Blvd/West Pennway Parking/RoW Map



While the City of Kansas City, Missouri makes every effort to maintain and distribute accurate information, no warranties and/or representations of any kind are made regarding information, data or services provided. In no event shall the City of Kansas City, MO, be liable in any way to the users of this data. Users of this data shall hold the City of Kansas City, MO harmless in all matters and accounts arising from the use and/or accuracy of this data. © 2020 City of Kansas City, Missouri.



409 Southwest Blvd Parking/RoW Map

PIN: 123903

APN: JA29410331800000000

Plat:

Block:

Lot:

Tract:

Owner: Boule LLC

845 W 62nd St

Kansas City, MO 64113

Address: 423 Southwest Blvd

ZIP Code: 64108

Council District: 4th

Trash Day: Monday

School District: KANSAS CITY MISSOURI 110

Census Neighborhood: Westside North

Park Region: Central

PW Maintenance District: D2

Impact Fee Zone: EXEMPT

Zoning: B4-2

Land Use: 2100 - Commercial (Non-Office)

Bldv Front Footage:

Assessment Effective Date:

Assessed Land: 71488

Assessed Improve: 24064

Exempt Land: 0

Exempt Improve: 0

Square Feet: 7,464.444

Acres: 0.171

Perimeter: 355.286

PLSS: s334907

Legal: 423 SOUTHWEST BLVD 2101 WASHINGTON SOUTHSIDE PLACE LOTS 11 & 12 BLK 1

While the City of Kansas City, Missouri makes every effort to maintain and distribute accurate information, no warranties and/or representations of any kind are made regarding information, data or services provided. In no event shall the City of Kansas City, MO, be liable in any way to the users of this data. Users of this data shall hold the City of Kansas City, MO harmless in all matters and accounts arising from the use and/or accuracy of this data. © 2012 City of Kansas City, Missouri.

Printed Date: 6/29/2020