

WALDO APARTMENTS

PROPOSED EXTERIOR BUILDING MATERIALS

AMU-1

ARCHITECTURAL MASONRY UNIT

MANUFACTURER: ROCKCAST OR EQUAL

COLOR: SLATE

AS-1

PERFORATED ARCHITECTURAL PANEL ATTACHED TO
CLEAR ANODIZED ALUMINUM FRAME

MANUFACTURER: ARTISAN PANELS, INC. OR

APPROVED EQUAL

PERF. PATTERN: 65-MATRIX

COLOR/FINISH: BLUE TEXTURE C241-BL210, COLOR TO
MATCH SAMPLE PROVIDED BY ARCHITECT

ASH-1

ARCHITECTURAL SHINGLES

MANUFACTURER: MILLENNIUM FORMS ZALMAG LARGE
TILE CUPPED

COLOR: CUSTOM BLEND 88% PRE-PATINA II WITH 12%
NATURAL

AWD-1

APARTMENT WINDOWS AND DOORS

MANUFACTURER: PELLA

COLOR: BLACK

CAN-1

METAL CANOPY AT RETAIL LEVEL

MANUFACTURER: MAPES CANTILEVER SUPERSHADE

COLOR: CLEAR ANODIZED ALUMINUM

CON-1

CAST IN PLACE CONCRETE WALL W/ DECORATIVE
FORMLINER

MANUFACTURER: FITZGERALD FORMLINERS

COLOR/FINISH: NATURAL CONCRETE / 16923

BARNWOOD

FCP-1

FIBER CEMENT LAP SIDING

MANUFACTURER: JAMES HARDIE - HARDIEPLANK LAP
SIDING 7 1/4"

FINISH: SMOOTH

FACTORY FINISHED COLOR: IRON GRAY

FCP-2

FIBER CEMENT RAINSCREEN PANEL SYSTEM

MANUFACTURER: JAMES HARDIE - REVEAL PANEL

WITH CLEAR ANODIZED RECESS TRIM OR ALUMINUM

EASY TRIM REVEAL SYSTEM AND EXPOSED

FASTENERS

FACTORY FINISHED COLOR: ARCTIC WHITE



FCP-3

FIBER CEMENT RAINSCREEN PANEL SYSTEM

MANUFACTURER: JAMES HARDIE - REVEAL

PANEL WITH CLEAR ANODIZED RECESS TRIM OR

ALUMINUM EASY TRIM REVEAL SYSTEM AND

EXPOSED FASTENERS

FACTORY FINISHED COLOR: IRON GRAY

GL-1

CLEAR INSULATED LOW-E GLAZING

MANUFACTURER: AGC ENERGY SELECT 40

MC-1

PRE-FINISHED METAL COPING AND SHEET

METAL

MANUFACTURER: BERRIDGE MFG.

COLOR/FINISH: LEAD-COTE

PBS-1

PREMANUFACTURED BALCONY SYSTEM

MANUFACTURER: INNOTECH

SS-1

ALUMINUM STOREFRONT SYSTEM

MANUFACTURER: KAWNEER TRI-FAB

VERSAGLAZE 451-T

COLOR/FINISH: CLEAR ANODIZED

WS-1

NATURAL WOOD SOFFIT

8" WIDE PREFINISHED CEDAR PLANK

AMU-1

ARCHITECTURAL MASONRY UNIT

MANUFACTURER: ROCKCAST OR EQUAL

COLOR: SLATE



AS-1

PERFORATED ALUMINUM PANEL ATTACHED TO CLEAR ANODIZED ALUMINUM FRAME
SIZE VARIES PER RAILING LOCATION.



ARTISAN
PANELS INC

APPLICATIONS

PATTERNS

GALLERY

DEALER

BLOG

CONTACT

FAQS



714-351-3234



65- Matrix

BLUE TEXTURE
C241-BL210



- Click on any of the color chips above to dynamically change the color of the pattern you're viewing. Additional colors can be viewed [HERE](#) and requested on the quote form under project description.
- The scale of the pattern you're viewing is based on 3'x5' rectangle. We can make ANY SIZE or SHAPE you want, just let us know in the quote form.
- Patterns are fully customizable, we can rotate, grow, shrink, tile, stretch & adjust opening %. If you can imagine it, we can probably make it. Just ask!
- Pattern openings can be adjusted to be building code compliant to a 4" sphere test or compliant to your local code regulations.

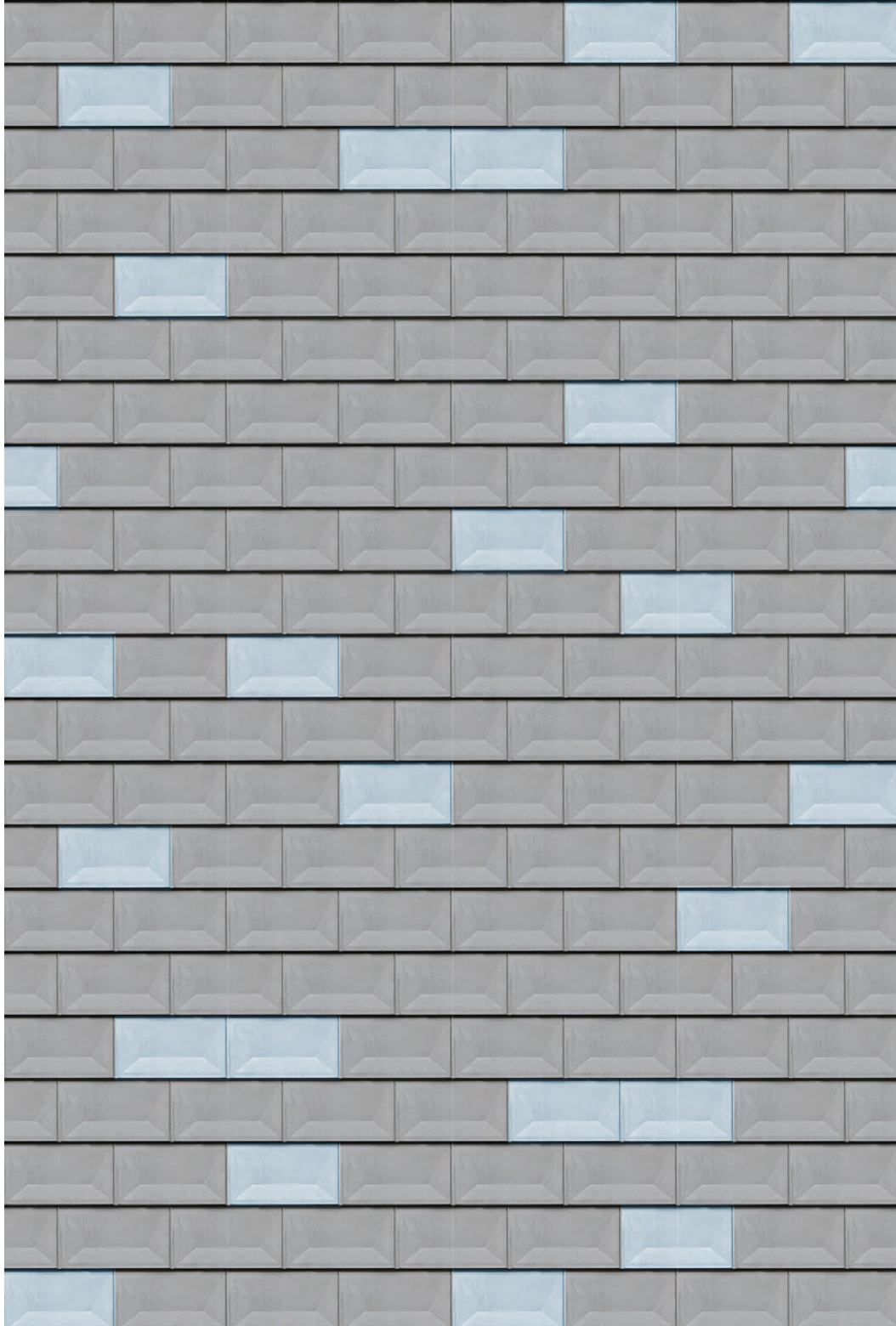
ASH-1

ARCHITECTURAL SHINGLES

MILLENNIUM FORMS - ZALMAG LARGE CUPPED TILE

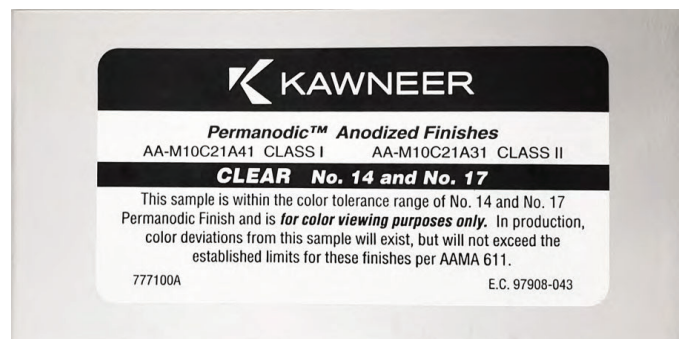
FIELD COLOR 88% - PRE-PATINA II

ACCENT COLOR 12% - NATURAL



CAN-1

METAL CANOPY AT RETAIL LEVEL
MANUFACTURER: MAPES CANTILEVER SUPERSHADE
COLOR: CLEAR ANODIZED ALUMINUM



CON-1

CAST IN PLACE CONCRETE WALL W/ DECORATIVE FORMLINER
MANUFACTURER: FITZGERALD FORMLINERS
COLOR/FINISH: NATURAL CONCRETE / 16923 BARNWOOD





Forming The Future™

PATTERN 16923

Barn Wood

0.25" Deep Heavy Random Grain Planks
With Uneven Grain

Vac-U-Form™

Styrene - Single Use.
ABS Plastic - Up to 15 reuses.

Wooden Plank

Part Size: 120" W x 48" H

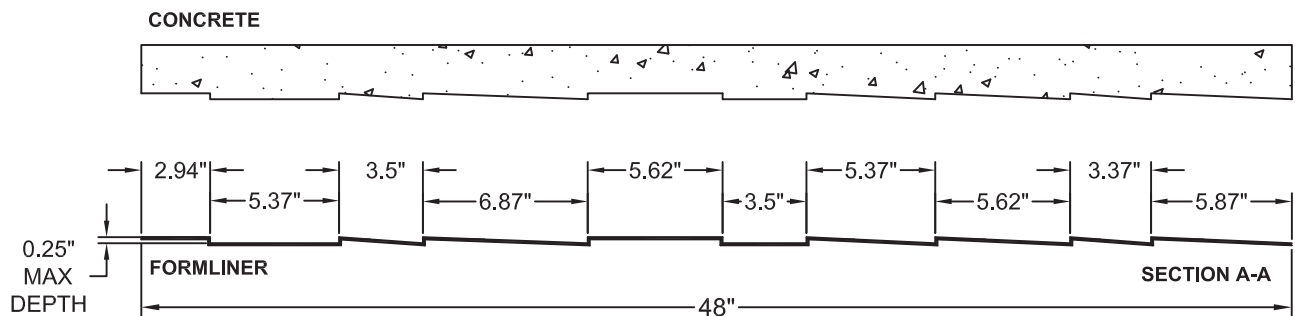
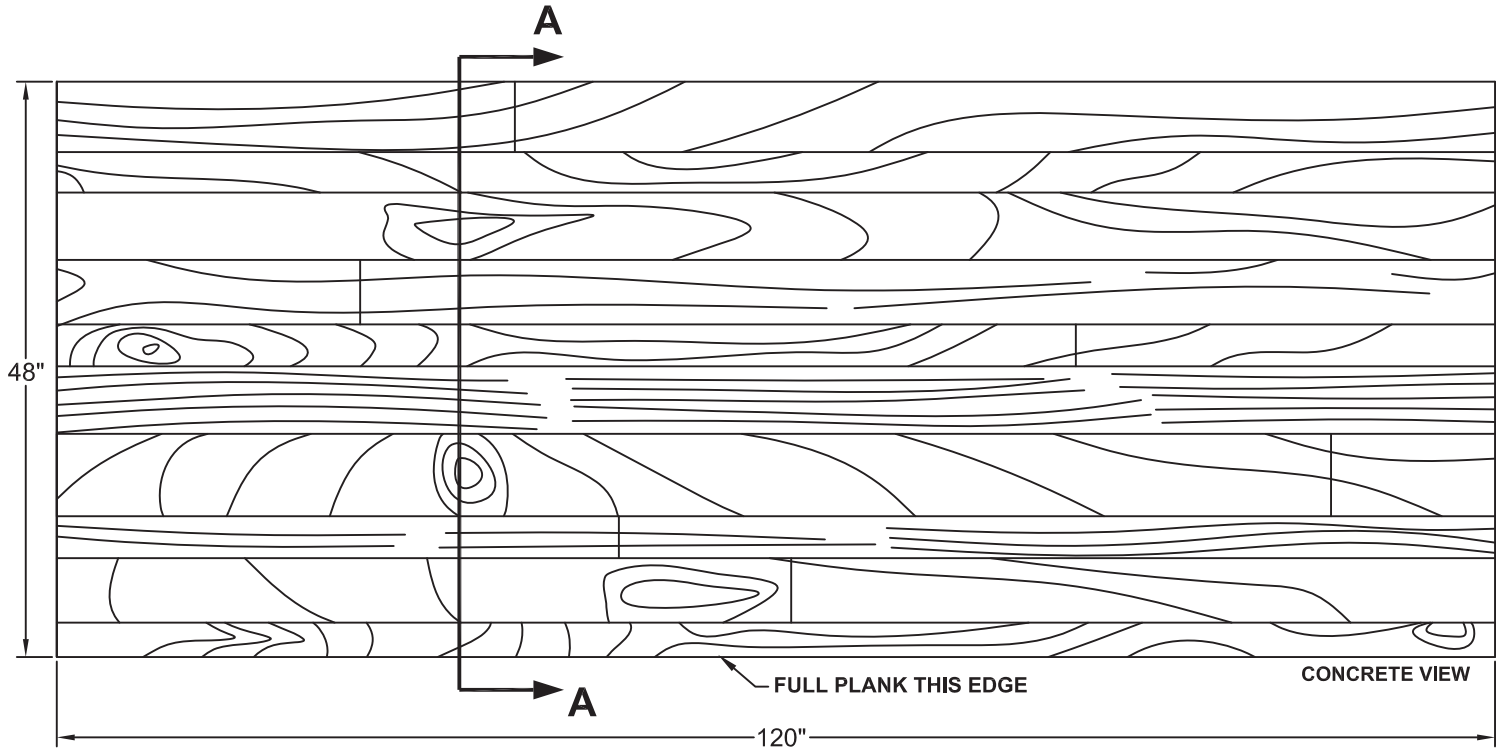
Max Depth: 0.25"

Board Width: 3"- 6.875"

Grain: Heavy

Interior Butt Joints

Additional Backing May Be Required



FORMLINER DETAIL

This document contains confidential and proprietary information of Fitzgerald Formliners, Inc. and is protected by copyright, trade secret, and other state and federal laws. Its receipt or possession does not cover any rights to reproduce, disclose its contents, or to manufacture, use, or sell anything it may describe. Reproduction, disclosure, or use without specific written authorization of Fitzgerald Formliners, Inc. is strictly forbidden.

FITZGERALD FORMLINERS

1500 East Chestnut Avenue • Santa Ana, CA 92701 • Fax (714) 245-9715

Ph: (800) 547-7760 • Ph (714) 547-6710 • www.formliners.com

Pattern can be requested in AutoCad format.

File Name: S-16923-VF-11-3-06

Page 1 of 1

FCP-1

FIBER CEMENT LAP SIDING
MANUFACTURER: JAMES HARDIE - HARDIEPLANK LAP SIDING 7 1/4"
FINISH: SMOOTH
FACTORY FINISHED COLOR: IRON GRAY



HARDIEPLANK®
Smooth

You can't go wrong with this simple, clean look.

Dream Collection™ Products

Size Options

Thickness	0.312"
Weight	2.34 lbs. per square foot
Length	144"

Widths	5.25"	6.25"	7.25"
Exposures	4"	5"	6"
Pcs./Pallet	324	280	252

Widths	8.25"
Exposures	7"
Pcs./Pallet	210

Siding Color Options

Iron Gray



FCP-2

FIBER CEMENT RAINSCREEN PANEL SYSTEM
MANUFACTURER: JAMES HARDIE - REVEAL PANEL WITH CLEAR ANNOIDIZED RECESS
TRIM OR ALUMINUM EASY TRIM REVEAL SYSTEM AND EXPOSED FASTENERS
FACTORY FINISHED COLOR: ARCTIC WHITE



 REQUEST A SAMPLE

< 4 OF 4 >

REVEAL PANEL WITH RECESS TRIM

Craft cleaner facades for an ultra-contemporary aesthetic. The hidden trim blends discreetly with the Reveal Panel, accentuating its smooth look while creating clean shadow lines. Reveal Recess trim is available primed and is compatible with primed Reveal panels.

Panel Specs

Thickness:	0.438"
Weight:	3.1 LBS./SQ. FT.
Length:	95.5"

Width:	47.5"
--------	-------

Color:

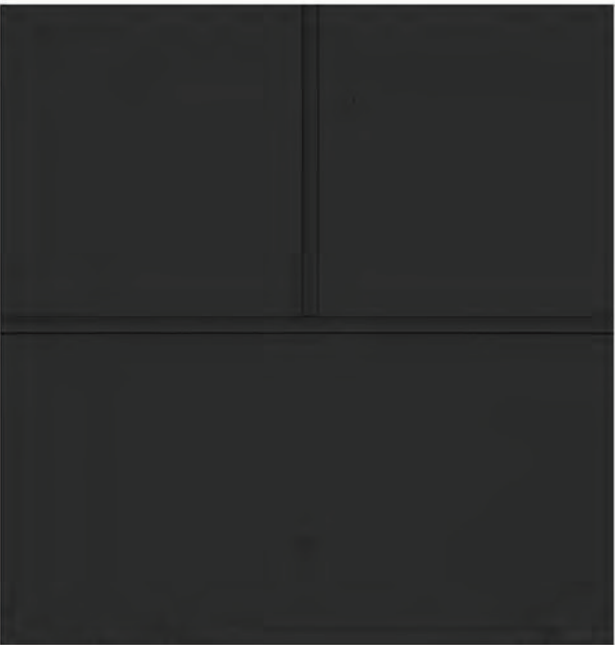
Siding Color Options


Arctic White



FCP-3

FIBER CEMENT RAINSCREEN PANEL SYSTEM
MANUFACTURER: JAMES HARDIE - REVEAL PANEL WITH CLEAR ANNODIZED RECESS
TRIM OR ALUMINUM EASY TRIM REVEAL SYSTEM AND EXPOSED FASTENERS
FACTORY FINISHED COLOR: IRON GRAY



 REQUEST A SAMPLE

< 4 OF 4 >

REVEAL PANEL WITH RECESS TRIM

Craft cleaner facades for an ultra-contemporary aesthetic. The hidden trim blends discreetly with the Reveal Panel, accentuating its smooth look while creating clean shadow lines. Reveal Recess trim is available primed and is compatible with primed Reveal panels.

Panel Specs

Thickness:	0.438"
Weight:	3.1 LBS./SQ. FT.
Length:	95.5"

Width:	47.5"
--------	-------

Color:

Siding Color Options

Iron Gray



MC-1

PRE-FINISHED METAL COPING AND SHEET METAL
MANUFACTURER: BERRIDGE MFG.
COLOR/FINISH: LEAD-COTE



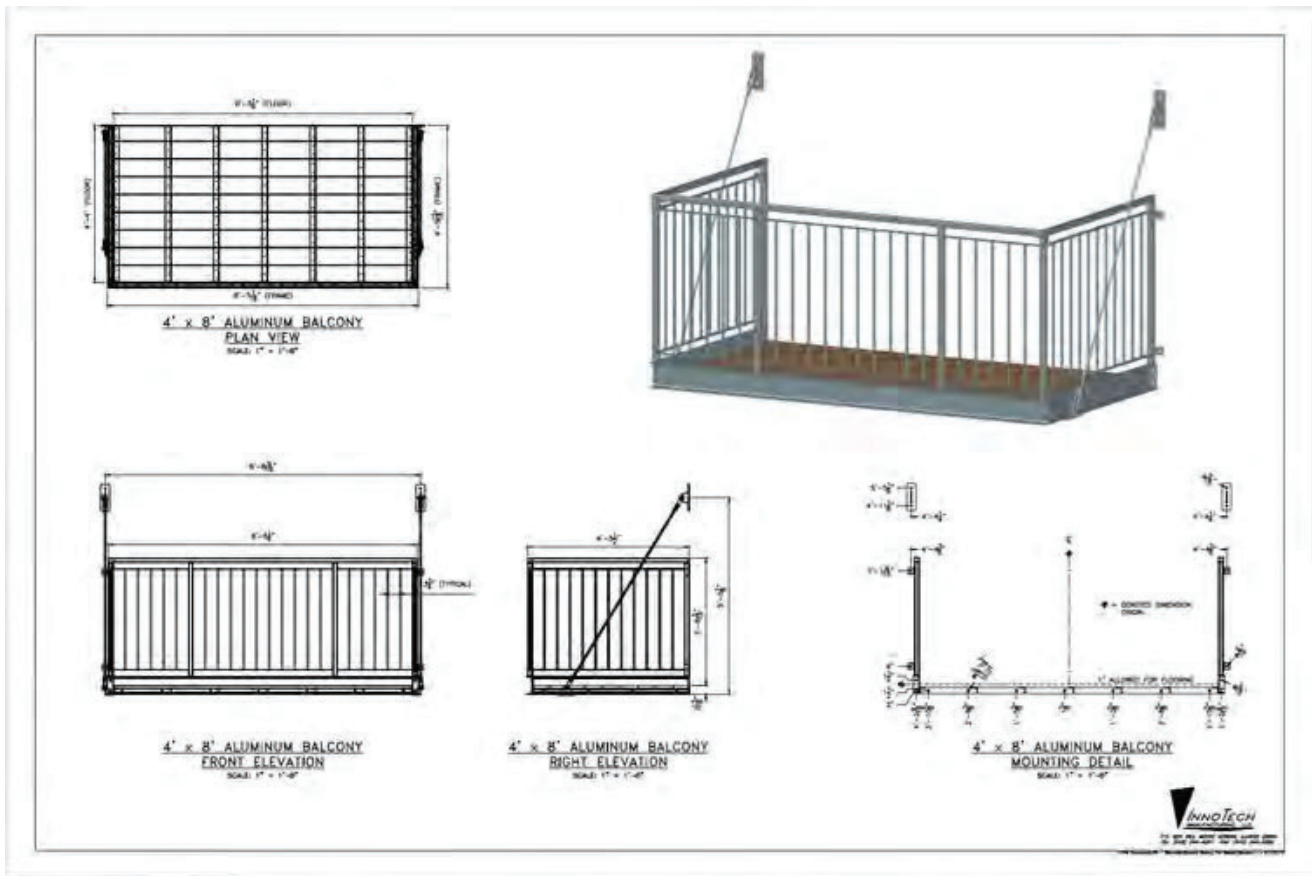
Lead-Cote™

KYNAR 500® or HYLAR 5000® Resin-based Color Finishes

Berridge color finishes applied on Galvalume steel and aluminum substrates are produced with full strength Kynar 500® or Hylar 5000® resin. Kynar 500® or Hylar 5000® PVDF resin-based color finishes provide superior exterior durability and maximum resistance to ultraviolet radiation. All Berridge color finishes are processed on the Berridge continuous coil coating line in San Antonio, TX. Berridge Premium and Metallic colors require a nominal surcharge.

PBS-1

PREMANUFACTURED BALCONY SYSTEM
MANUFACTURER: INNOTECH
ALUMINUM BALCONY AND RAIL FINISH - BLACK



* SAMPLE BALCONY FOR REFERENCE ONLY

COMPOSITE WOOD DECKING COLOR - SADDLE

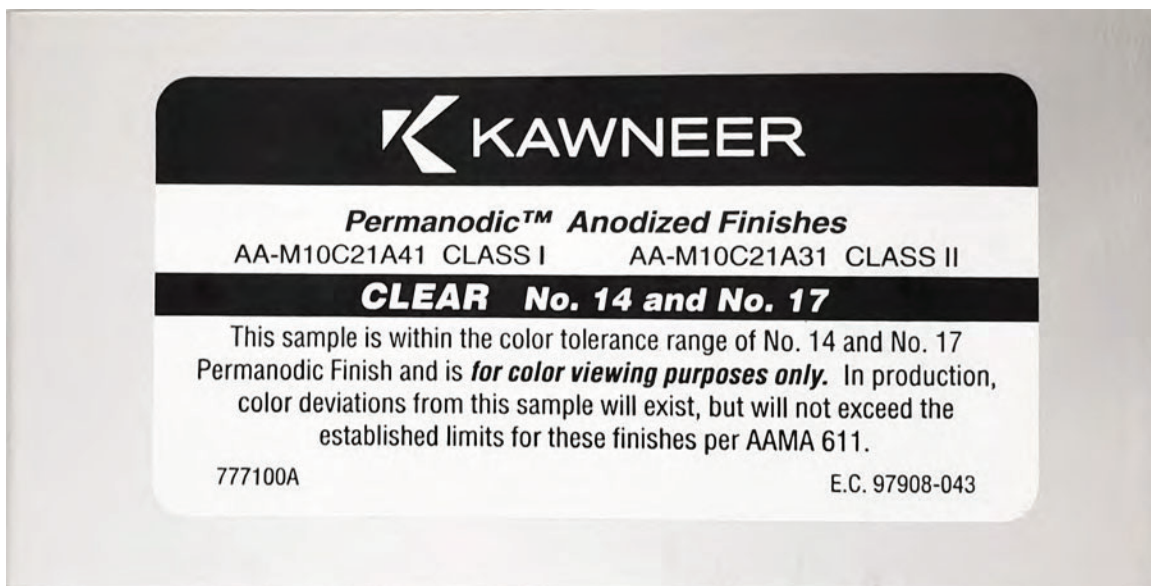


SS-1

ALUMINUM STOREFRONT SYSTEM

MANUFACTURER: KAWNEER TRI-FAB VERSAGLAZE 451-T

COLOR/FINISH: CLEAR ANODIZED



WS-1

NATURAL WOOD SOFFIT
8" WIDE PREFINISHED CEDAR PLANK

