

PRELIMINARY
NOT FOR
CONSTRUCTION

Douglas Stockman
Architect
MO License No. 2011009353
dstockman@helixkc.com

Design Architect
SixTwentyOne
1705 Summit Street
Kansas City, MO 64108
913.669.0556

Code Consultant
Code Consultant Service
5050 Malcolm Lake Road
Edgerton, MO 64444
Jeff Boyle
816.985.9669

Civil Engineer
Talisano & Browne, Inc.
MO License No. 2013034490
1020 East 8th Street
Kansas City, MO 64106
Lamin Nyang
816.283.3456

Structural Engineer
Ligh + O'Kane Engineering
MO License No. 20170000344
250 Northeast Mulberry Street, Suite 201
Lain Summit, MO 64086
Adam O'Kane
816.444.3144

Mechanical, Electrical, Plumbing Engineer
Lankford | Fendler + Associates
MO License No. 2006037230
1730 Walnut Street
Kansas City, MO 64108
Greg Fendler
816.221.1411

Landscape Architect
Landworks Studio
MO License No. LA-2010000196
102 South Cherry Street
Olathe, KS 66061
Erica Flad
913.780.6707

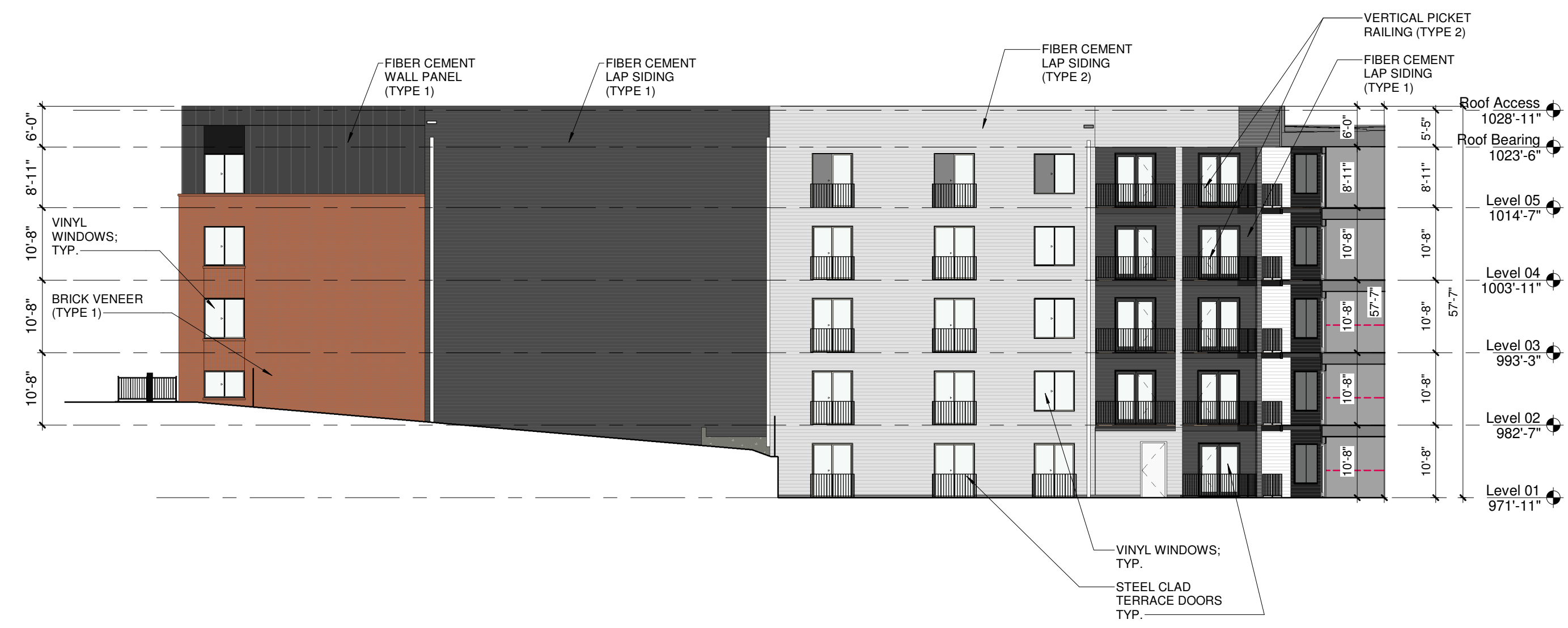
Jamestown Square
3922 Bell Street
Kansas City, MO 64111

PROJECT NO.	21004.00
REZONING	02/03/2022
NO. REVISION	DATE:

Exterior Elevations



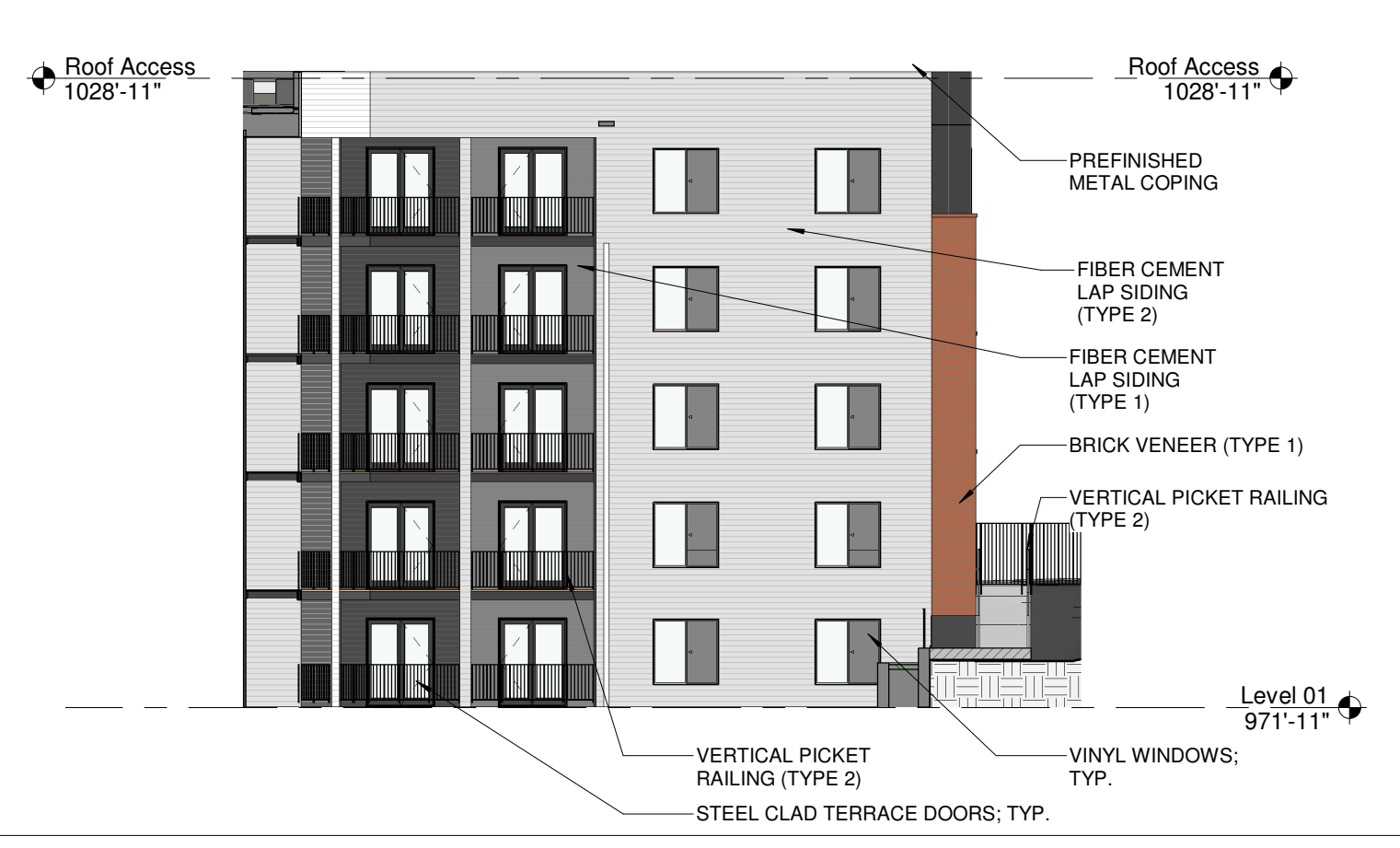
EAST ELEVATION (Color) G1
1/16" = 1'-0"



COURTYARD - NORTH FACING ELEVATION (Color) D7
1/16" = 1'-0"



COURTYARD - EAST FACING ELEVATION (Color) D1
1/16" = 1'-0"



COURTYARD - WEST FACING ELEVATION (Color) A7
1/16" = 1'-0"



COURTYARD - SOUTH FACING ELEVATION (Color) A1
1/16" = 1'-0"