

Docket #6.1 & 6.2

**CD-CPC-2025-00060**

**Rezoning**

**CD-CPC-2025-00059**

**Development Plan – Non-Residential**

Guadalupe Centers High School Renovation

June 18, 2025

City Plan Commission









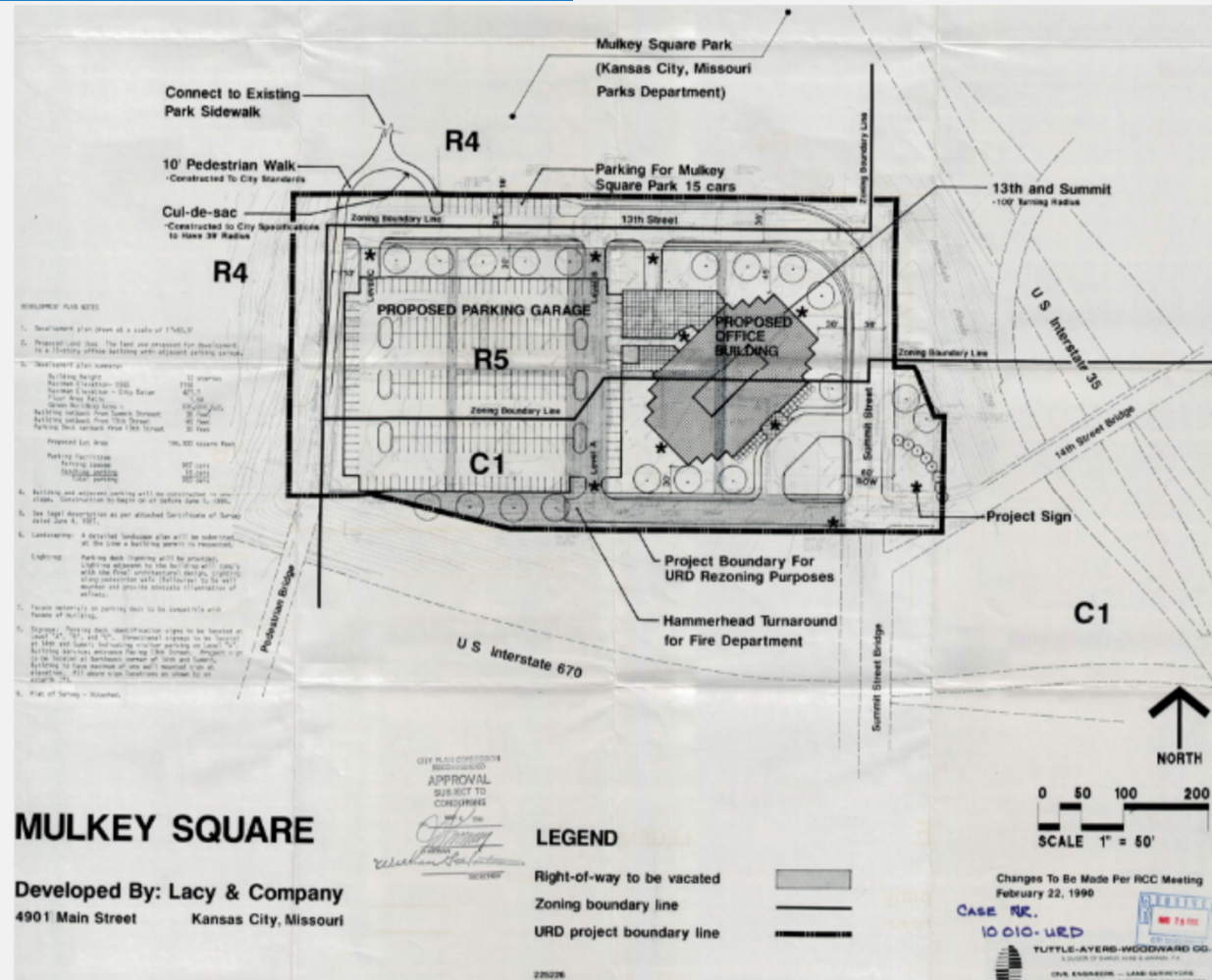


**View looking NW from Summit Street**





**View SW from W. 13<sup>th</sup> Street**



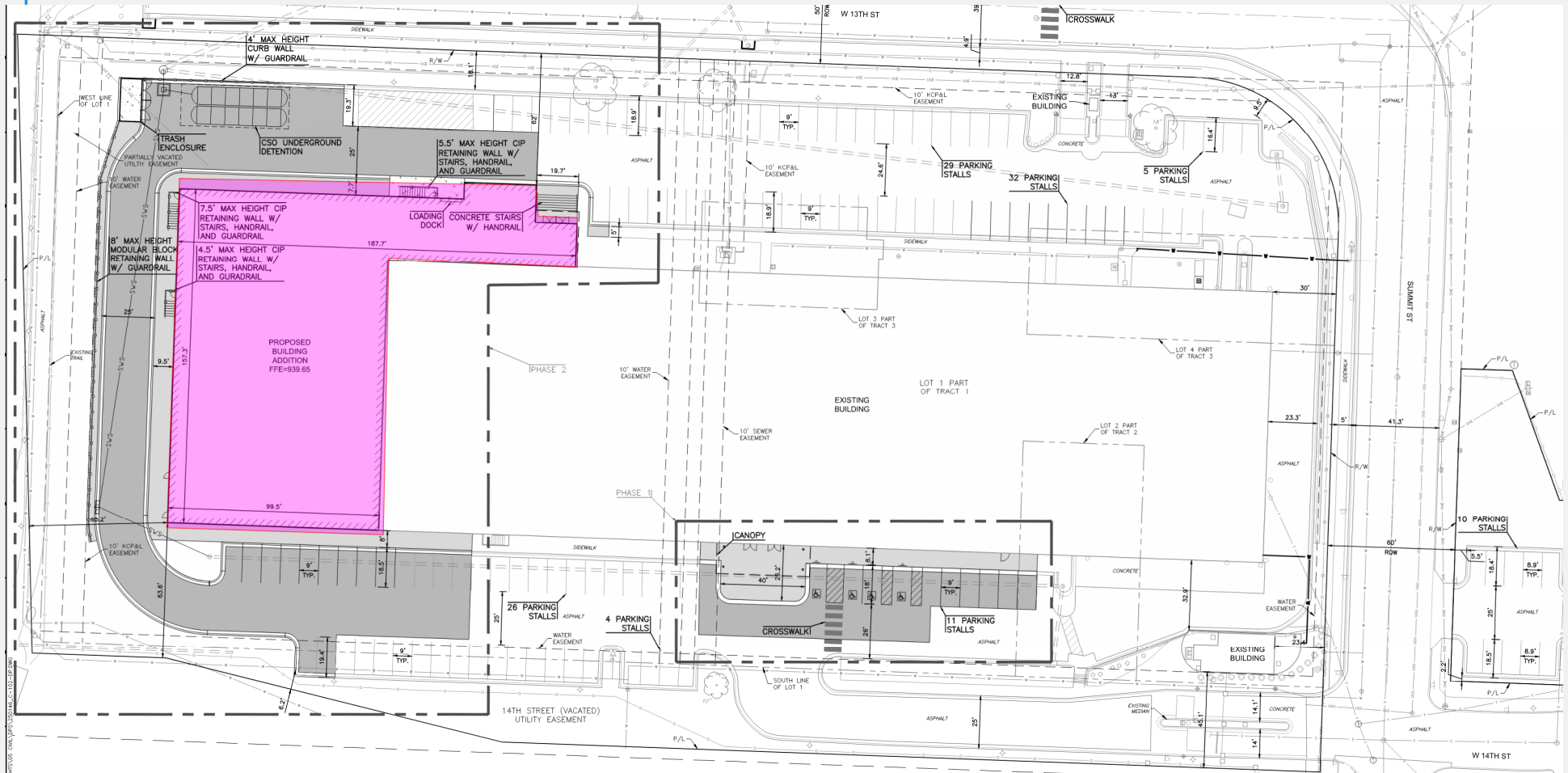
## History



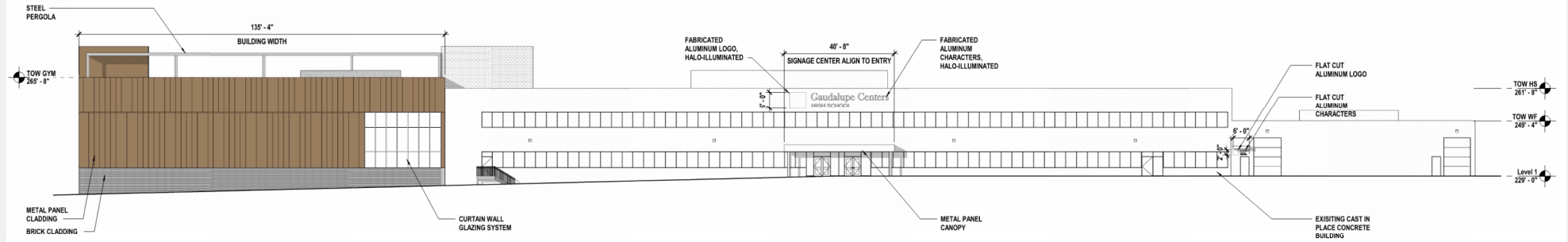


Rezoning from UR to DX

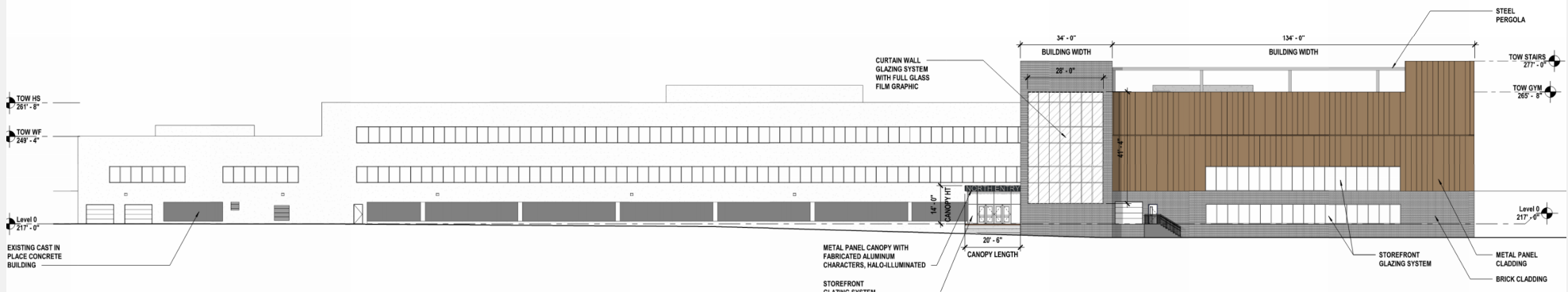




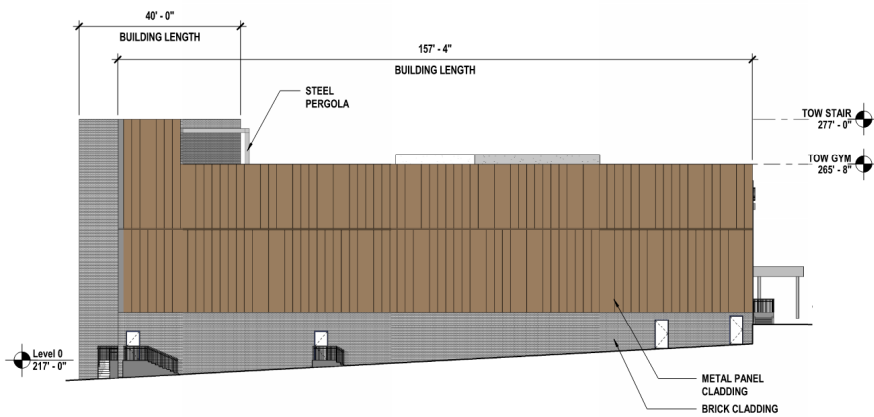
Site Plan (including Phase II)



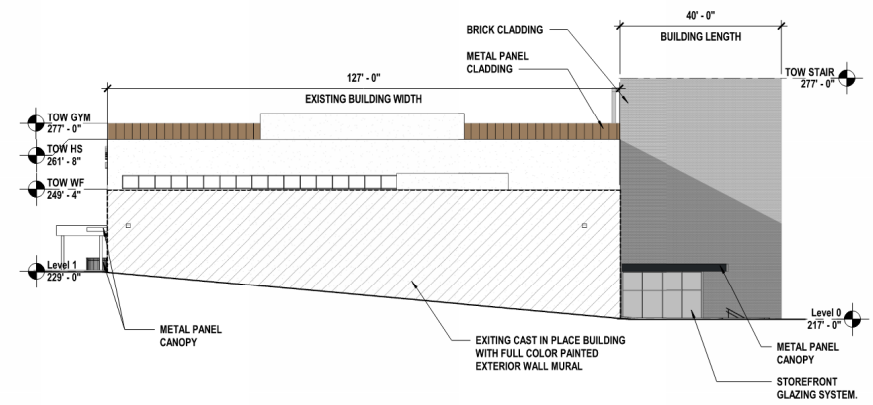
Scale Overall South Elevation  
1/16" = 1'-0"



## Elevations



Overall West Elevation



Overall East Elevation

M10

Scale

## Elevations



# PROPOSED USES:

88-805-03-A CLUB, LODGE, OR FRATERNAL ORGANIZATION  
 88-805-03-C DAY CARE (GROUP DAY CARE, DAY CARE CENTER)  
 88-805-03-G LIBRARY, MUSEUM, OR CULTURAL EXHIBIT  
 88-805-03-I RELIGIOUS ASSEMBLY  
 88-805-03-K SCHOOL  
 88-805-04-J ENTERTAINMENT VENUES AND SPECTATOR SPORTS (LARGE VENUE)  
 88-805-04-P OFFICE (ADMINISTRATIVE, PROFESSIONAL OR GENERAL OFFICE)

88-420 - PARKING	VEHICLE SPACES		BICYCLE SPACES		ALTERNATIVES PROPOSED?
	REQUIRED	PROPOSED	REQUIRED	PROPOSED	
PROPOSED USE: SCHOOL					
STALLS	74	250			
ACCESSIBLE	3	7			
PROPOSED USE: SPECTATOR SPORTS**					
STALLS	250	250			
ACCESSIBLE	7	7			
LONG-TERM			28	*54	
SHORT-TERM			65	*54	YES
<b>TOTAL</b>	<b>250</b>	<b>250</b>	<b>93</b>	<b>*54</b>	<b>YES</b>
*ALL SHORT TERM BIKE PARKING CAN ALSO BE CONSIDERED LONG TERM BIKE PARKING BASED ON CODE. ONLY 54 BIKE PARKING STALLS ARE PROVIDED DUE TO THE LACK OF RESIDENTIAL HOUSING NEAR THE SCHOOL LOCATION AND THE SCHOOL BEING PRIVATE. **SPECTATOR SPORTS REQUIRED PARKING BASED ON THE CAPACITY OF THE GYMNASIUM					

## Proposed Uses & Parking

# Staff Recommendation

**CD-CPC-2025-00060**

**Rezoning**  
**Approval**

**CD-CPC-2025-00059**

**Development Plan – Non-Residential**  
**Approval with Conditions**