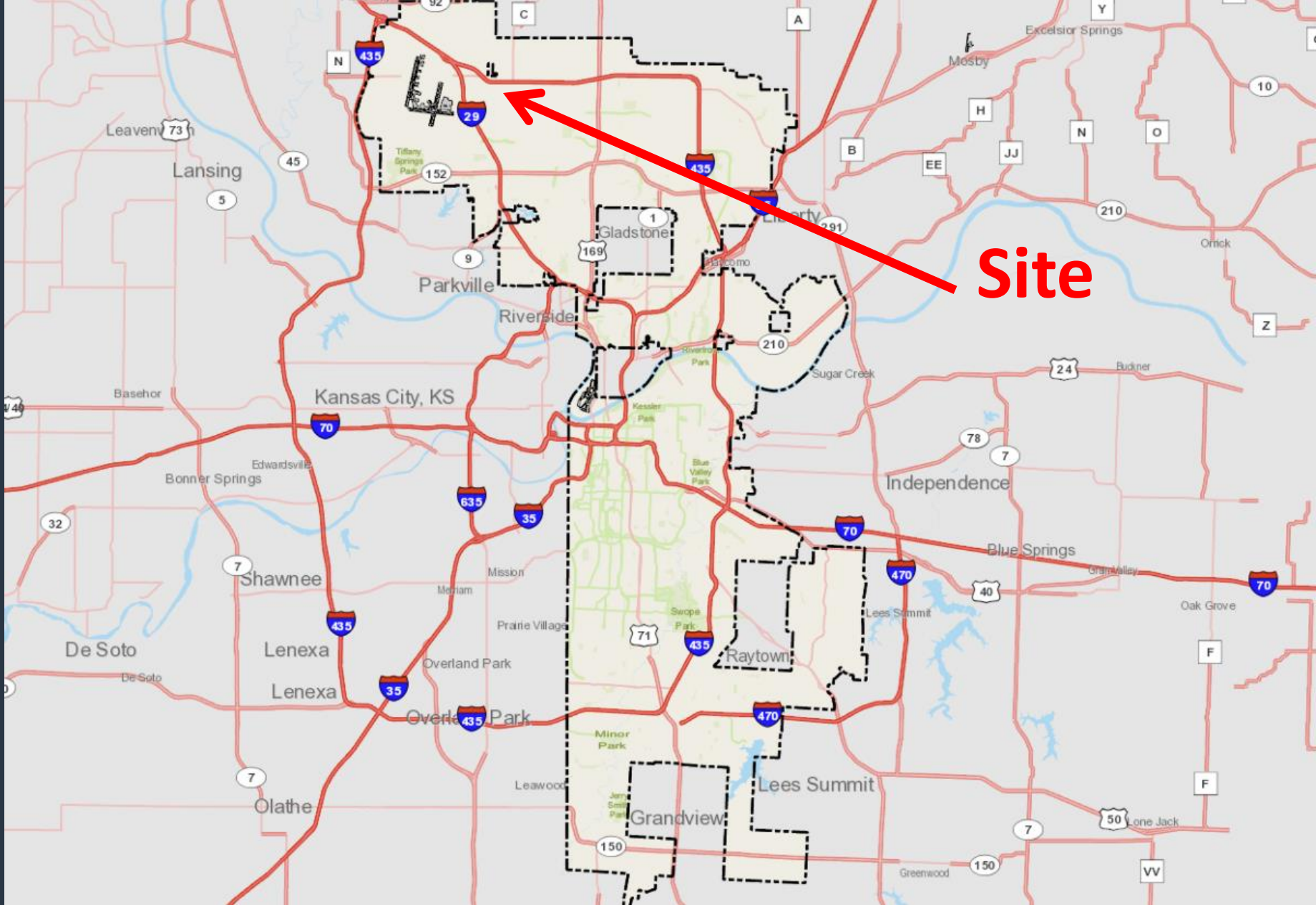


Docket #9

**Case No. CD-CPC-2022-00170**  
**Rezoning without Plan**

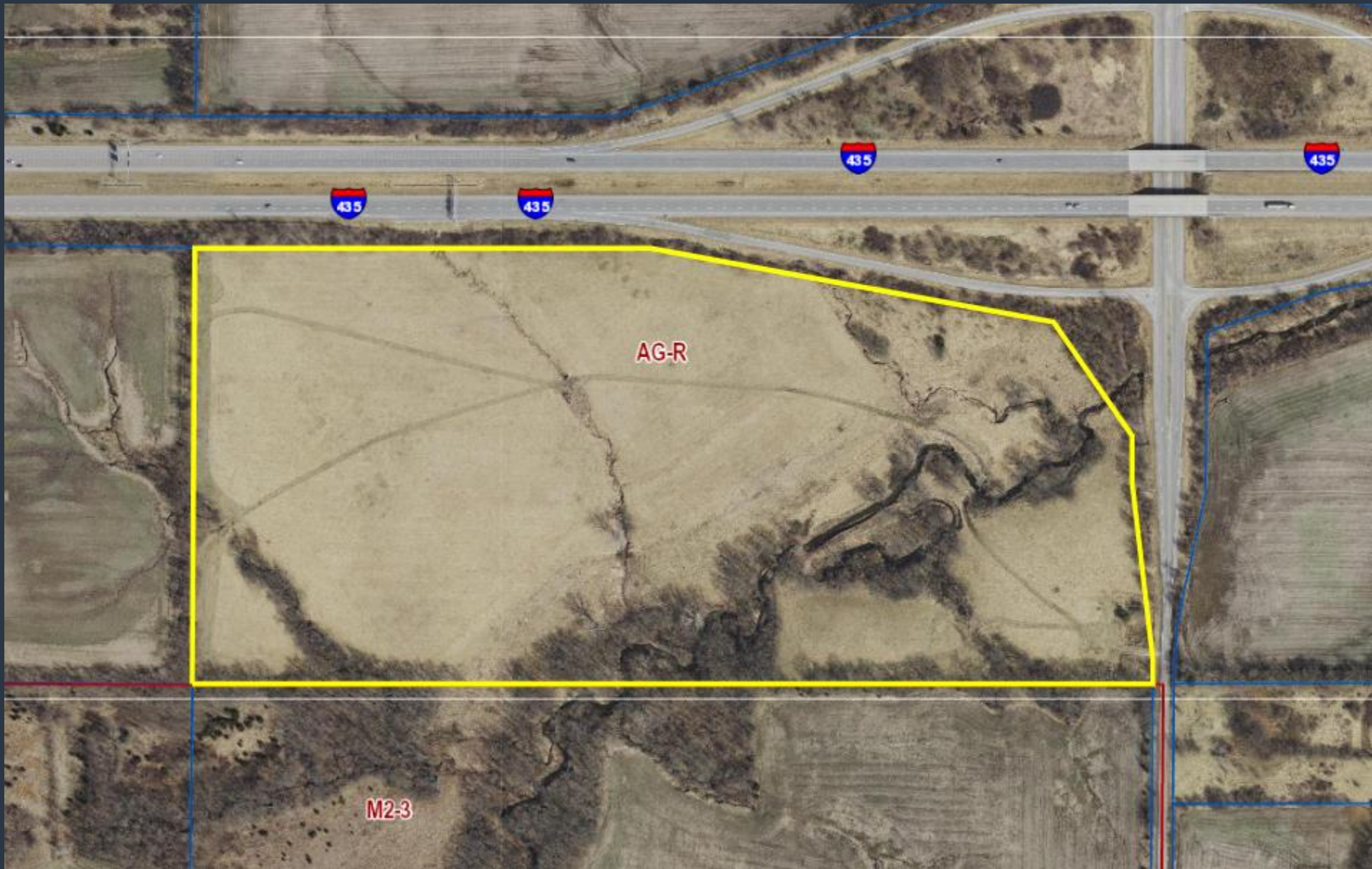
**Skyview Industrial Rezoning – 11620 NW Skyview Ave**





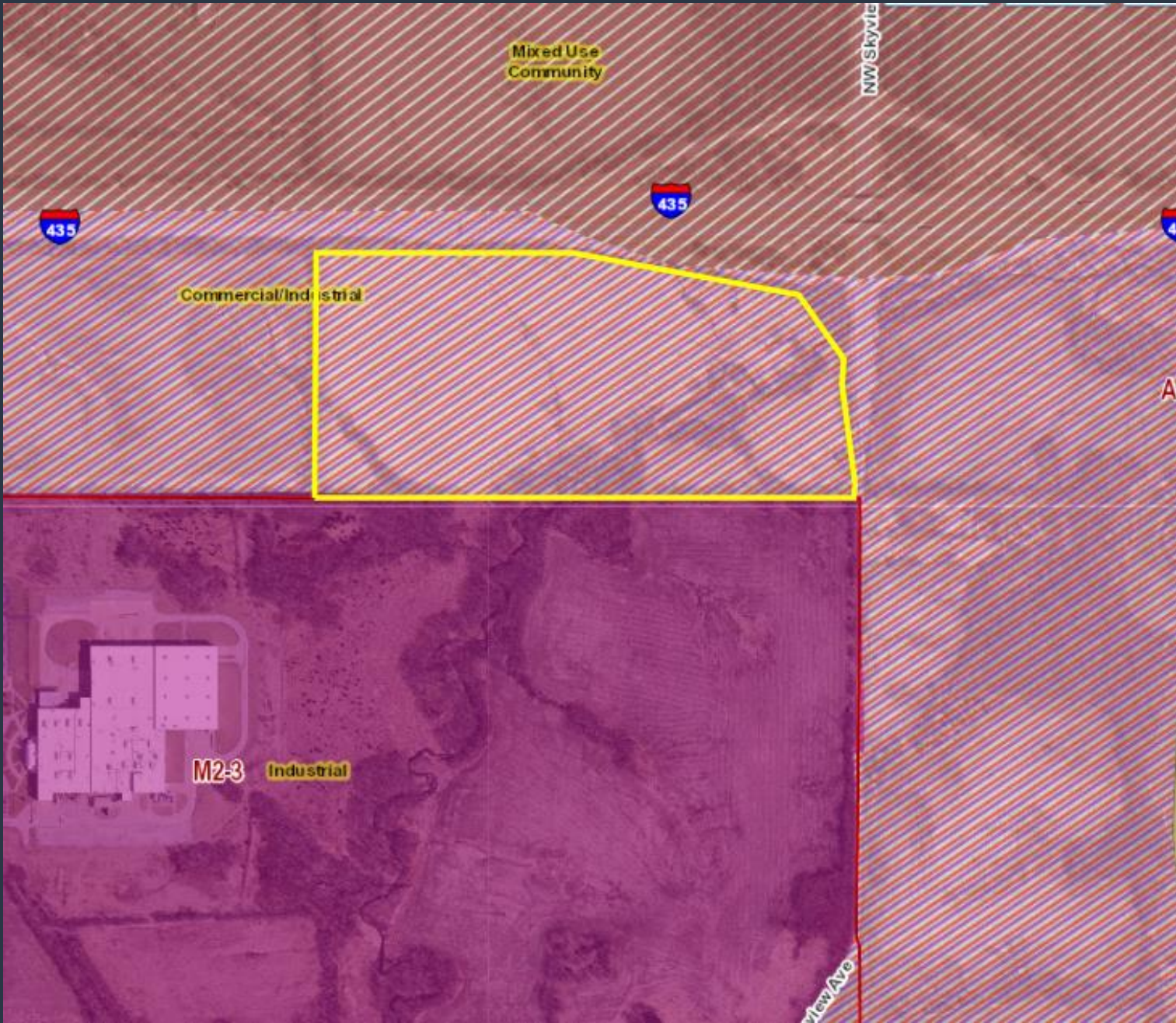
**Site**





Case No. CD-CPC-2022-00170





Case No. CD-CPC-2022-00170

# KCI Area Plan

## Commercial and Industrial:

“Allows either Commercial or Industrial uses. Also allows a combination of the two uses primarily in business and industrial parks.”





View looking south towards the site from I-435



**Case No. CD-CPC-2022-00170**



View looking northwest towards the site from NW Skyview Ave



Case No. CD-CPC-2022-00170



# Staff Recommendation: Approval without Conditions



Case No. CD-CPC-2022-00170