

# Shoal Creek Parkway TIF Plan Five-Year Progress Report

February 2025

# Shoal Creek Parkway TIF Plan

- **Approved in 1994, amended twenty-three times**
- **Total budget \$298 million, \$206 million reimbursable from TIF**
- **The TIF Funds are used exclusively for public infrastructure.**

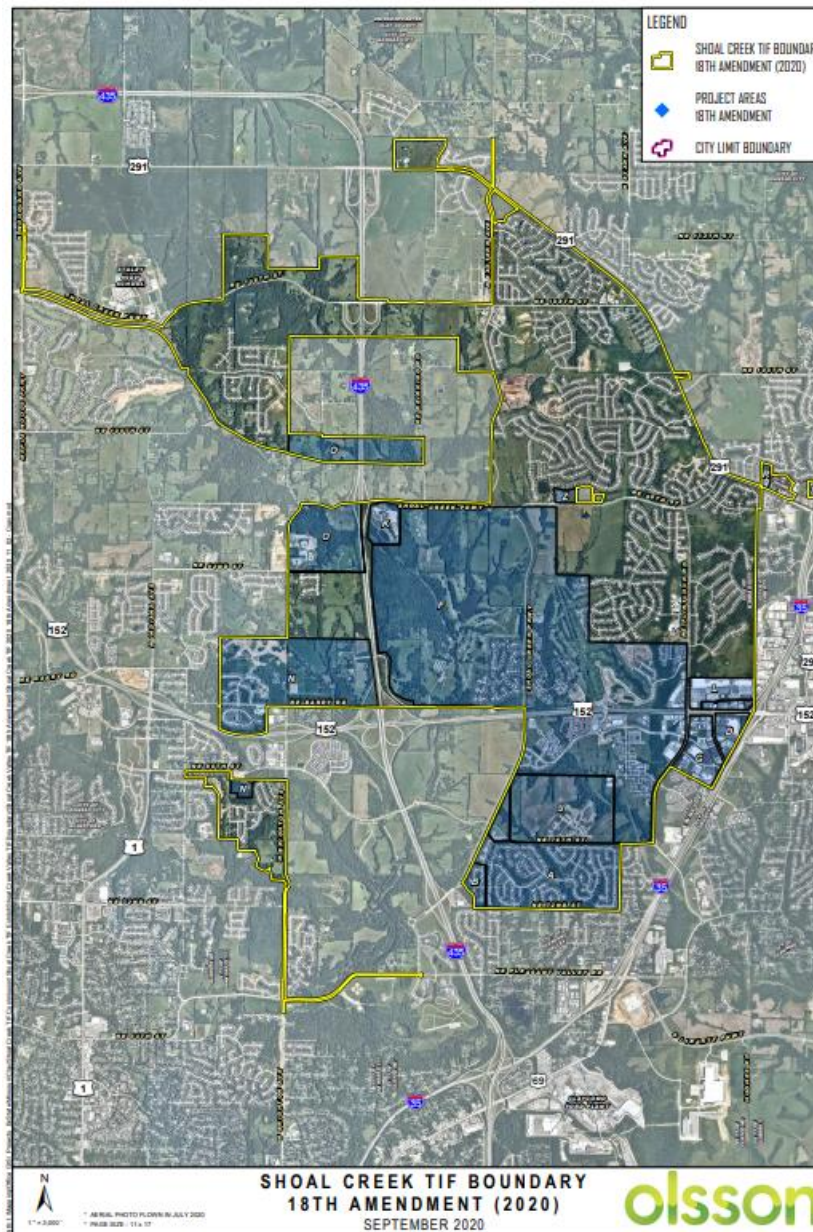
# Shoal Creek Parkway TIF Plan

- **The Redevelopment Area is generally bounded by Hwy 291 and 108<sup>th</sup> Street on the north, I-35 and Hwy 291 on the east, and Brighton and Maplewoods Parkway on the west and Pleasant Valley Road on the south**

Map Reference	Road Improvement Description	Completion Date
A1	Shoal Creek Parkway: Hodge Park south to Interstate 435	Complete
A2	Shoal Creek Parkway: Hodge Park north to NE 96th Street	Complete
A3	Shoal Creek Parkway: NE 96th Street west to Interstate 435	Complete
A4	Shoal Creek Parkway: Interstate 435 to Brighton	Complete
A5	Searcy Creek Parkway: I-435 W to Pleasant Valley	Complete
A6	Shoal Creek Parkway: NE 108th Street to Staley Road Design of Searcy Creek and Shoal Creek Parkways Shoal Creek Parkway Study: 100th to Brighton Water Line	Complete
B	NE 72nd Street: Gladstone city limits to N Brighton	2032
C1-C4	Maple Woods Parkway: Indiana to Interstate 435	2032
D1	NE 76th: 650 linear feet west of N Flintlock to Interstate 435	2032
D2	Soccer Drive: Interstate 435 to Brighton	Complete
D3	Soccer Drive: N Brighton to Spruce Avenue	2032
D4	NE 76th box culvert	2032
D5	Sidewalks: Shoal Creek Parkway to N. Stark	Complete
E	NE 96th Street between Shoal Creek Parkway and N Flintlock Road	Complete
F1	N Flintlock: NE 96th Street to Missouri Route 152	Complete
F2	N Flintlock: Missouri Route 152 to NE 76th Street	Complete
F3	N Flintlock: 76th Street to the "Flintlock Flyover"	Complete

F4	N Flintlock: Traffic Signalization at NE 90 <sup>th</sup> Street, which may include a crosswalk in lieu of or in addition to the traffic signal	2022
G1	N Brighton: Missouri Route 152 to NE 80th Street	Complete
G2	N Brighton: 1941 linear feet south of NE 79th Street to N Pleasant Valley	2024
G3	N Brighton: NE 80th Street to 2700 linear feet south of NE 76th Street	Complete
G4	N. Brighton Water Line	2032
G5	SKW Design & Construction Services	2032
G6	NE 58 <sup>th</sup> Street to Pleasant Valley Road	2023
H1	N Eastern Avenue: Intersection at Highway 291	Complete
H2	N Eastern: South of Kellybrook Elementary School approximately 2,000 linear feet	Complete
H3	N Eastern Avenue: 96th Street to 106th Street	Complete
H4	N Eastern: 108th to Highway 291	2032
I1	NE 108th: Smalley to Interstate 435	Complete
I2	NE 108th: Interstate 435 to Staley Road	Complete
J	Interstate 35/Highway 291 Intersection	2032
K1	NE 104th: Highway 291 to A Highway	2021
K2	NE 104 <sup>th</sup> Street: ½ mile east of Highway 291 to Liberty/Kansas City city limits	2021
K3	NE 104 <sup>th</sup> Street: Liberty/Kansas City city limits to A Highway (KCMO share)	2021
K4	NE 104 <sup>th</sup> Street: Signal at Highway 291	2021
	Shoal Creek Parkway Study: 100th to Brighton Water Line	2021
L	Highway 152: Interstate 35 Interchange	2020
L1	Highway 152: Shoal Creek Parkway to Interstate 35	2022
L2	Highway 152: Traffic Control Study and Corridor Improvements between Shoal Creek Parkway and Interstate 35	2023
M1	Pleasant Valley Road: Intersection with Brighton	2023
M2	Pleasant Valley Road: Brighton to Searcy Creek	2032
N	Hodge Park Improvements	2021
O	Infrastructure improvements related to the construction of a fire station within the Redevelopment Area	2019

P	Trail segment along Shoal Creek Parkway, between N. Brighton and Pleasant Valley Road	2024
Q	N. Booth Avenue north of MO Highway 152 and MO Highway 152, beginning at a point 1,400 linear feet west of N. Booth Avenue and continuing to a point 1,960 linear feet east of N. Booth Avenue	2021
R	Public Detentions	2021
S	Public Utilities – Storm Water Sewer, Sanitary Sewers and a Water Main along MO Highway 152, beginning at a point 1,400 linear feet west of N. Booth Avenue and continuing to a point 1,960 linear feet east of N. Booth Avenue, and Dry Utilities	2021
T	Woodneath Library Improvements – Paving, Asphalt Trails, Walkways, Lighting, Bridge, Access Road, Utility Work, Design Work and Contingency	2022
U	NE 108 <sup>th</sup> Street: Traffic signal at 108 <sup>th</sup> and NE Cookingham Drive	2021
V	N. Sherman: Street lights between NE Cookingham Drive and NE 116 <sup>th</sup> Terrace	2022
W	Maplewoods Parkway: Shoal Creek Parkway to NE 112 <sup>th</sup> Street, including the construction of a water line	2022
X	Maplewoods Parkway: NE 112 <sup>th</sup> Street extending north to and including the intersection at NE Cookingham Drive	2026









## **The developers for the Plan are:**

**The City of Kansas City – Public Works**

**The City of Kansas City – Parks and Recreation**

**Star Acquisitions, Inc.**

**Mid-Continent Library**

**Hunt Midwest**

**Are the redevelopment projects making satisfactory progress under the proposed time schedule contained within the approved plan for completion of such projects?**

**All of the projects for which a redevelopment agreement has been executed have been and are being completed in accordance with the approved time schedule.**