



# 11th Street Corridor TIF Plan

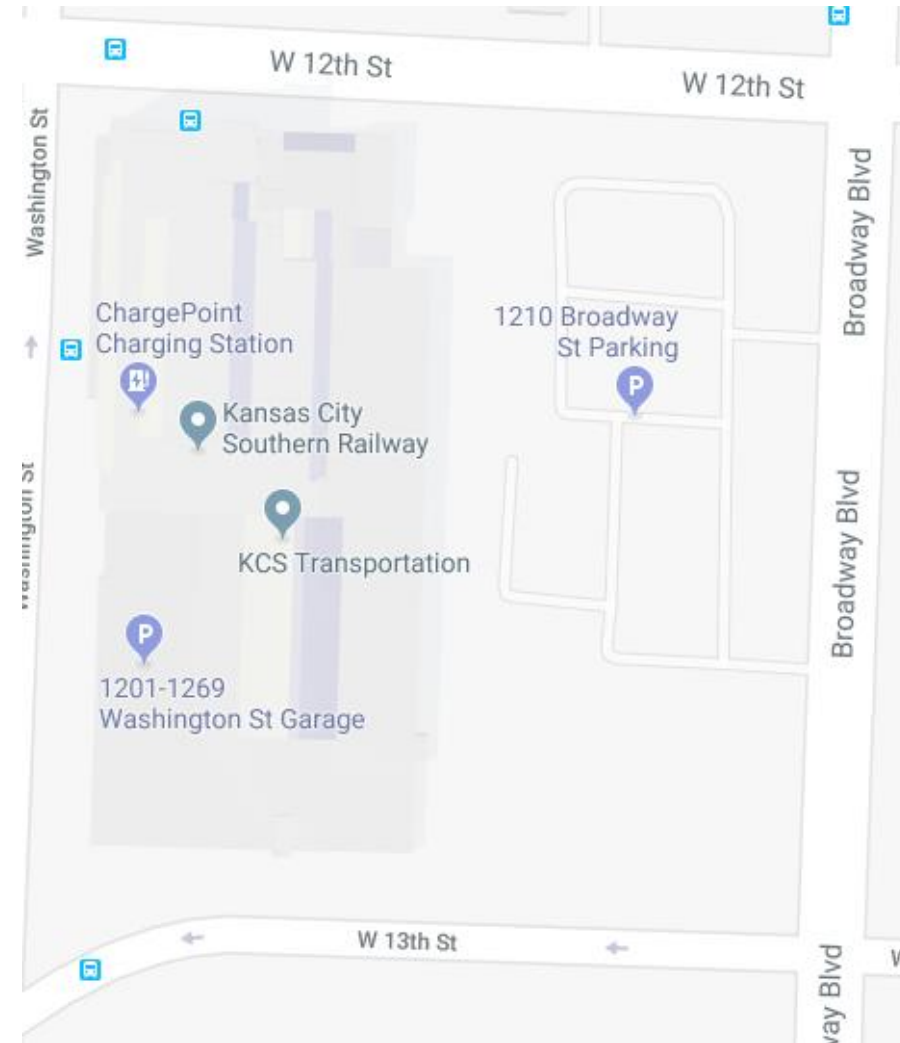
15<sup>TH</sup> AMENDMENT

# 11th Street Corridor TIF Plan overview

- ▶ Plan approved in 1992
- ▶ Conservation area
- ▶ Large plan area with over 26 project areas
- ▶ Design review process: integrate new development (including building, pedestrian paths, streetscapes, parking and landscaping) with existing stock consistent with historic and architectural character
- ▶ Redevelopers – primarily DST related entities

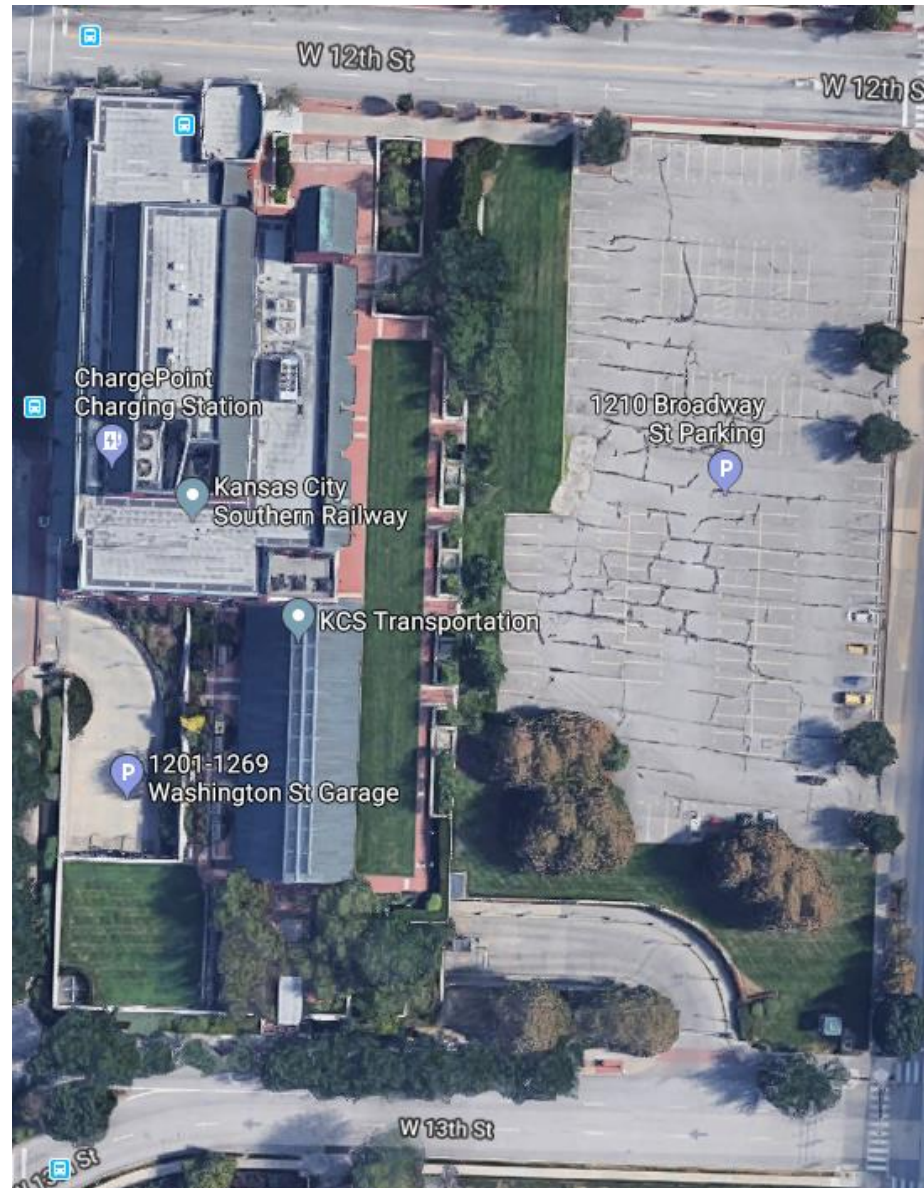
# Project Y

Generally bounded by 12<sup>th</sup> Street on the north, Broadway Blvd on the east, 13<sup>th</sup> Street on the south, and Washington Street on the west.



# Project Y

The western half of the project was developed in 2002 as an office building, now housing Kansas City Southern. The site also features a parking garage, which serves the office building as well as Bartle Hall Convention Center.





The eastern half of Project Y was never developed in accordance with the plan, and remains a surface parking lot.



# 15<sup>th</sup> Amendment

The 15<sup>th</sup>  
Amendment will  
delete the parcels  
containing the  
surface parking  
lots from the TIF  
Plan.



1200 Broadway  
(surface  
parking lot) to  
be deleted

1210  
Broadway  
(surface  
parking lot) to  
be deleted

# Expiration of other project areas

