

Ordinance No. 240344

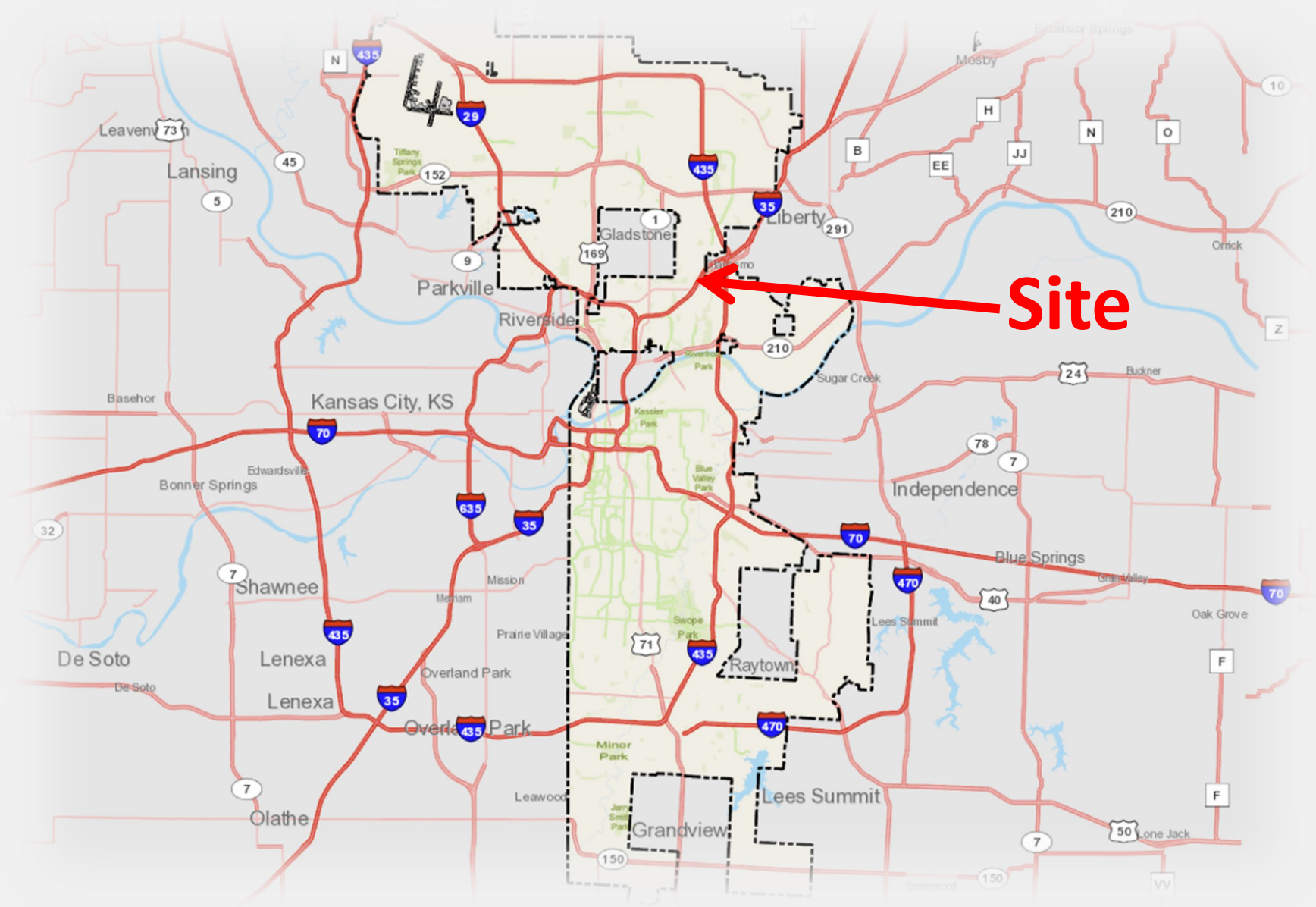
Development Plan – Non-Residential

Oak Ridge Family Club
5330 NE Oak Ridge Drive

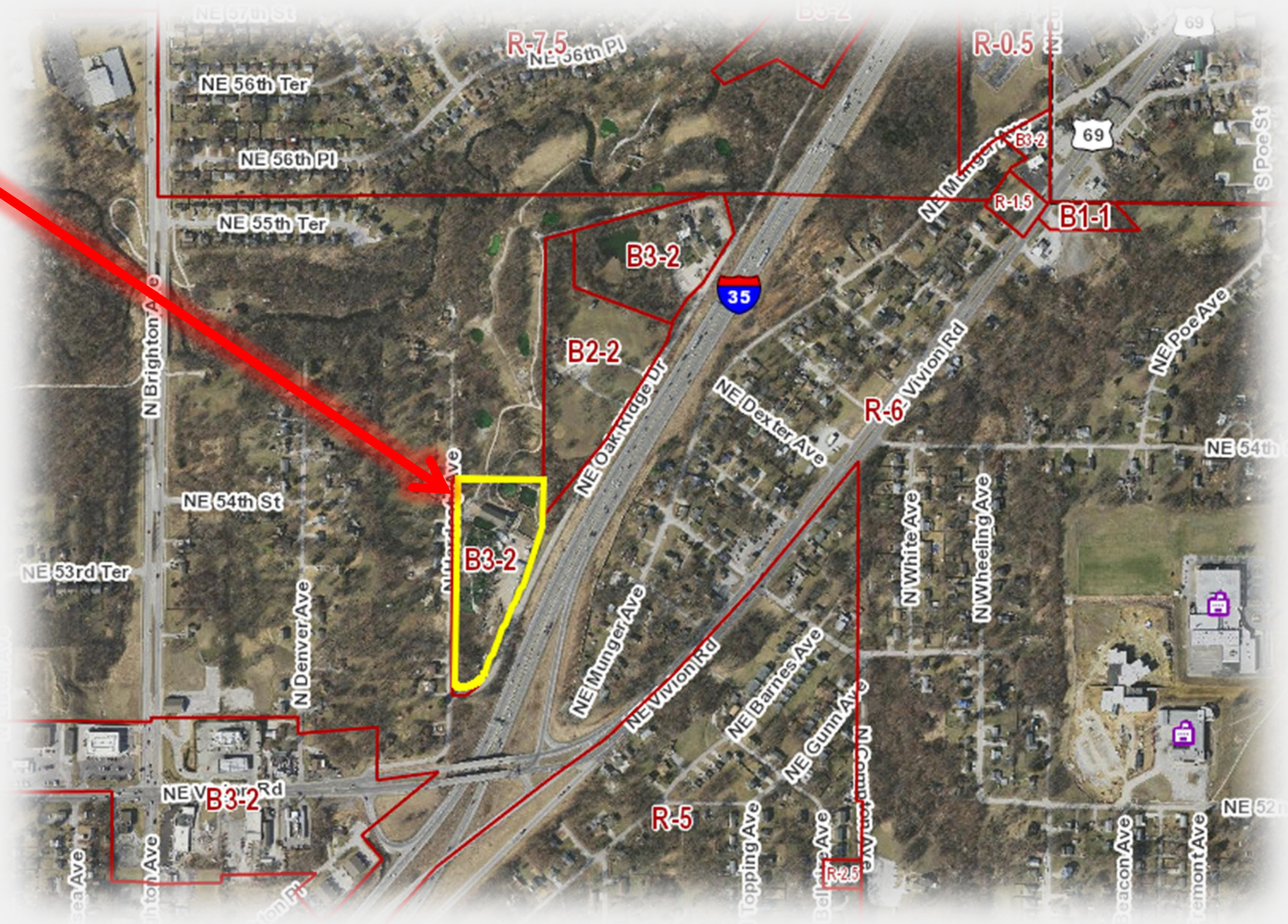
4-10-2024

Neighborhood Planning and Development





Site





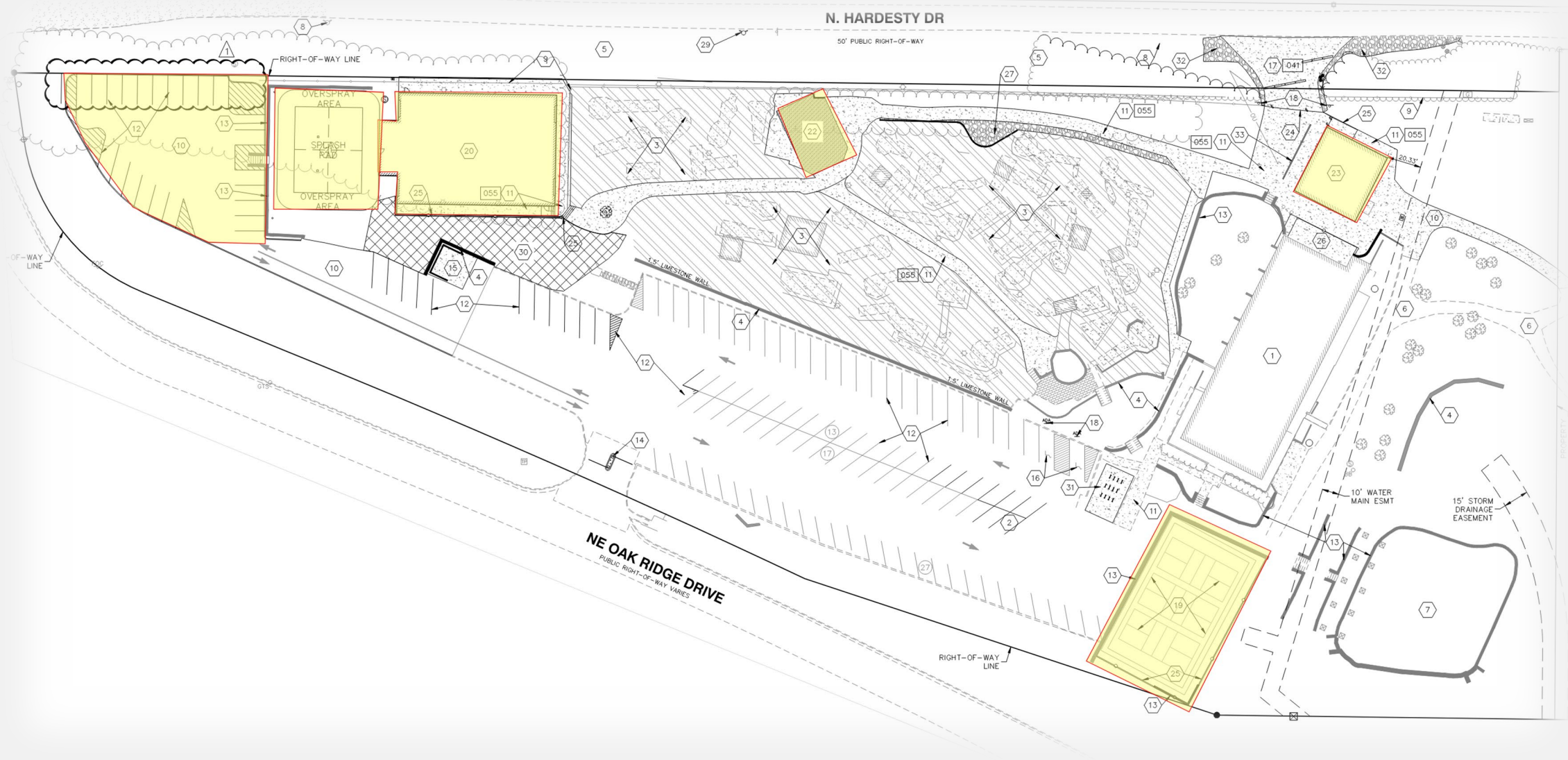
View looking west from I-35

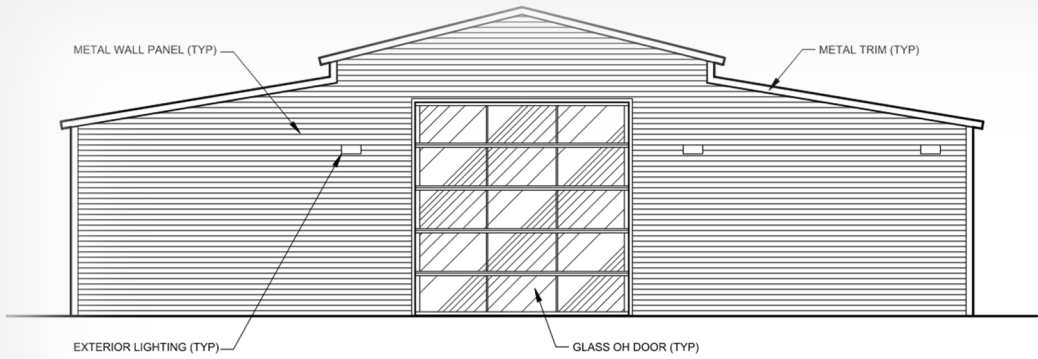


View looking northeast from N Hardesty Avenue

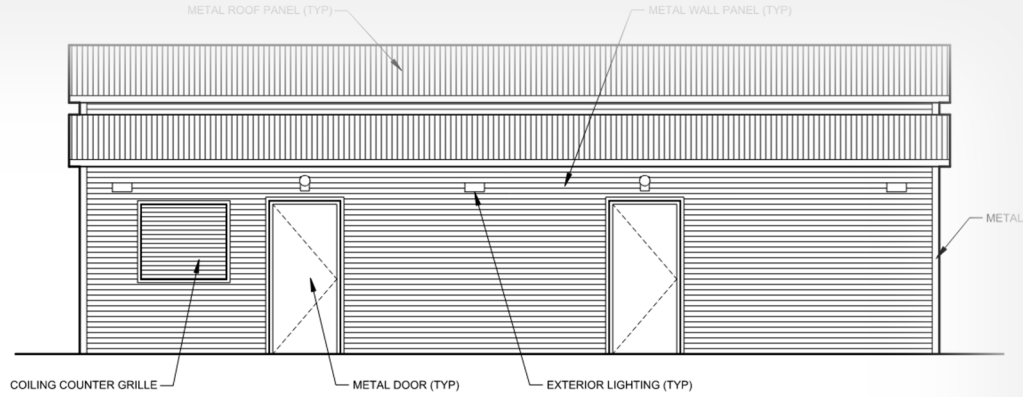


View looking south from N Hardesty Avenue

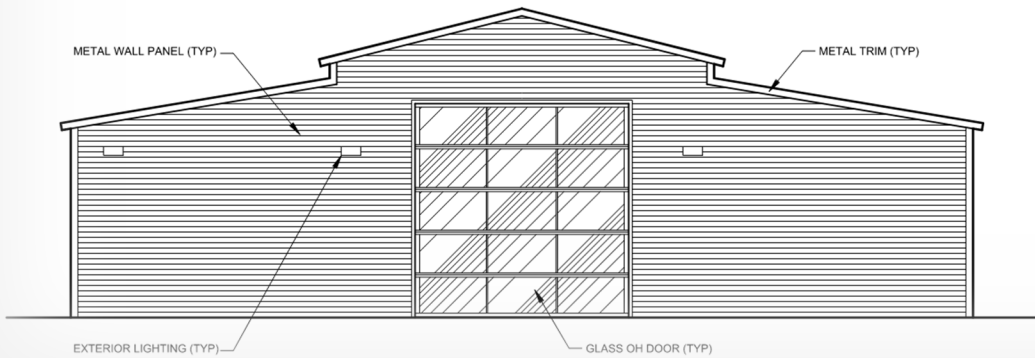




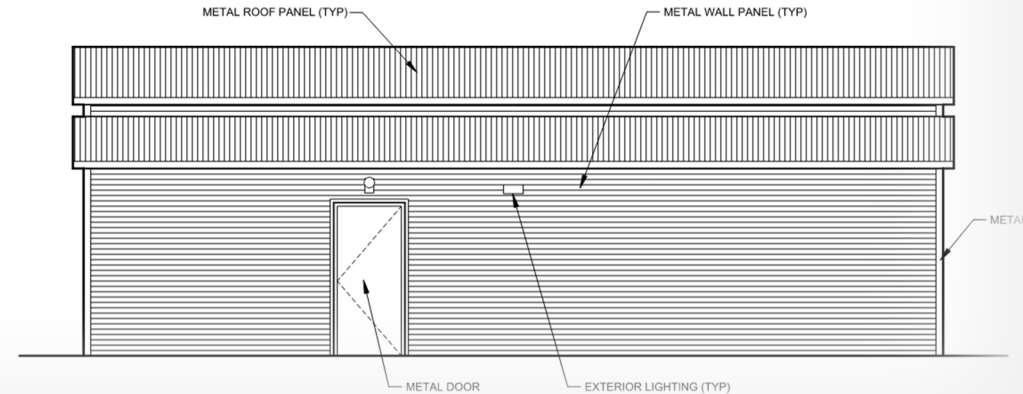
EXTERIOR ELEVATION - SOUTH
SCALE: 1/4" = 1'-0"



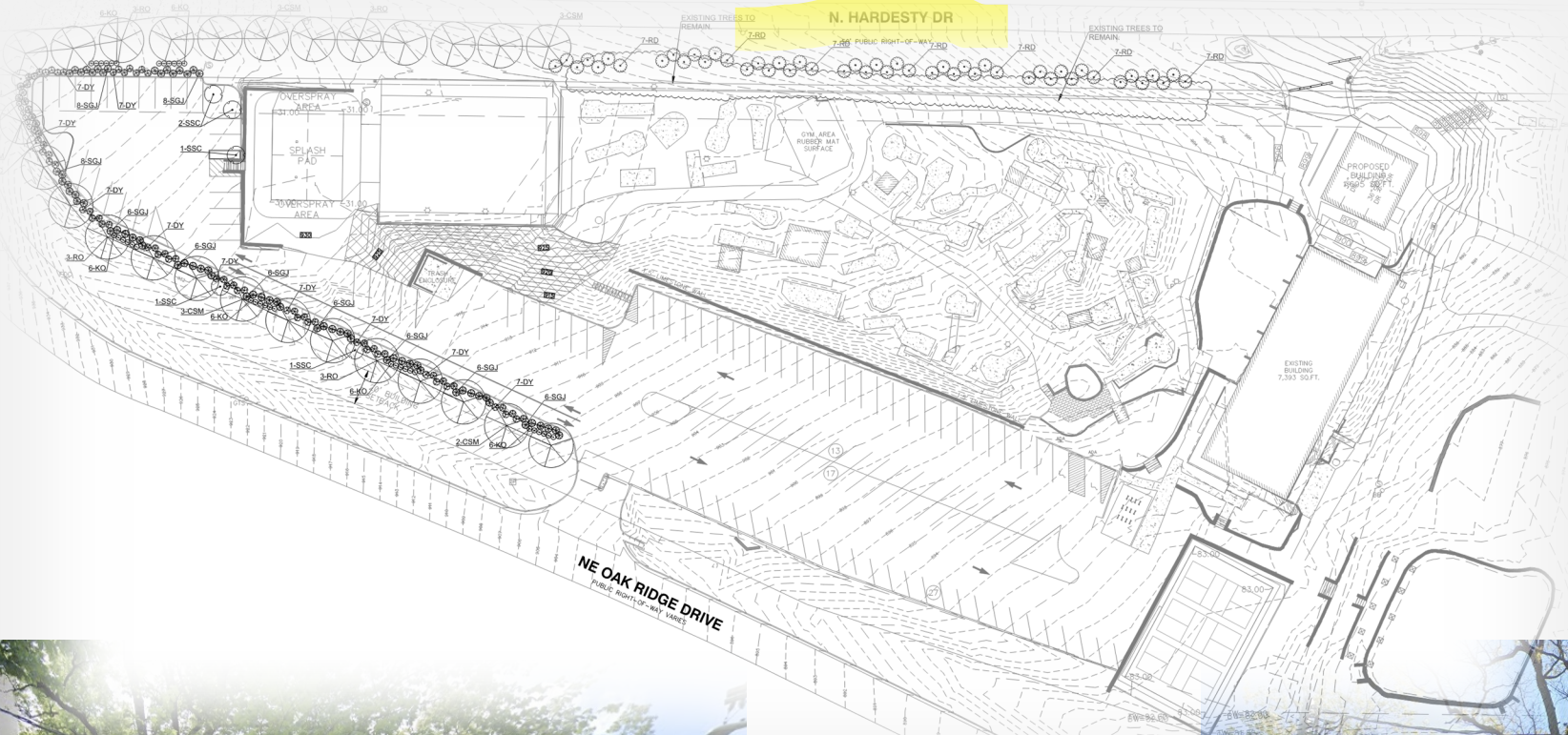
M11 **EXTERIOR ELEVATION - EAST**
SCALE: 1/4" = 1'-0"



EXTERIOR ELEVATION - NORTH



EXTERIOR ELEVATION - WEST



BEFORE



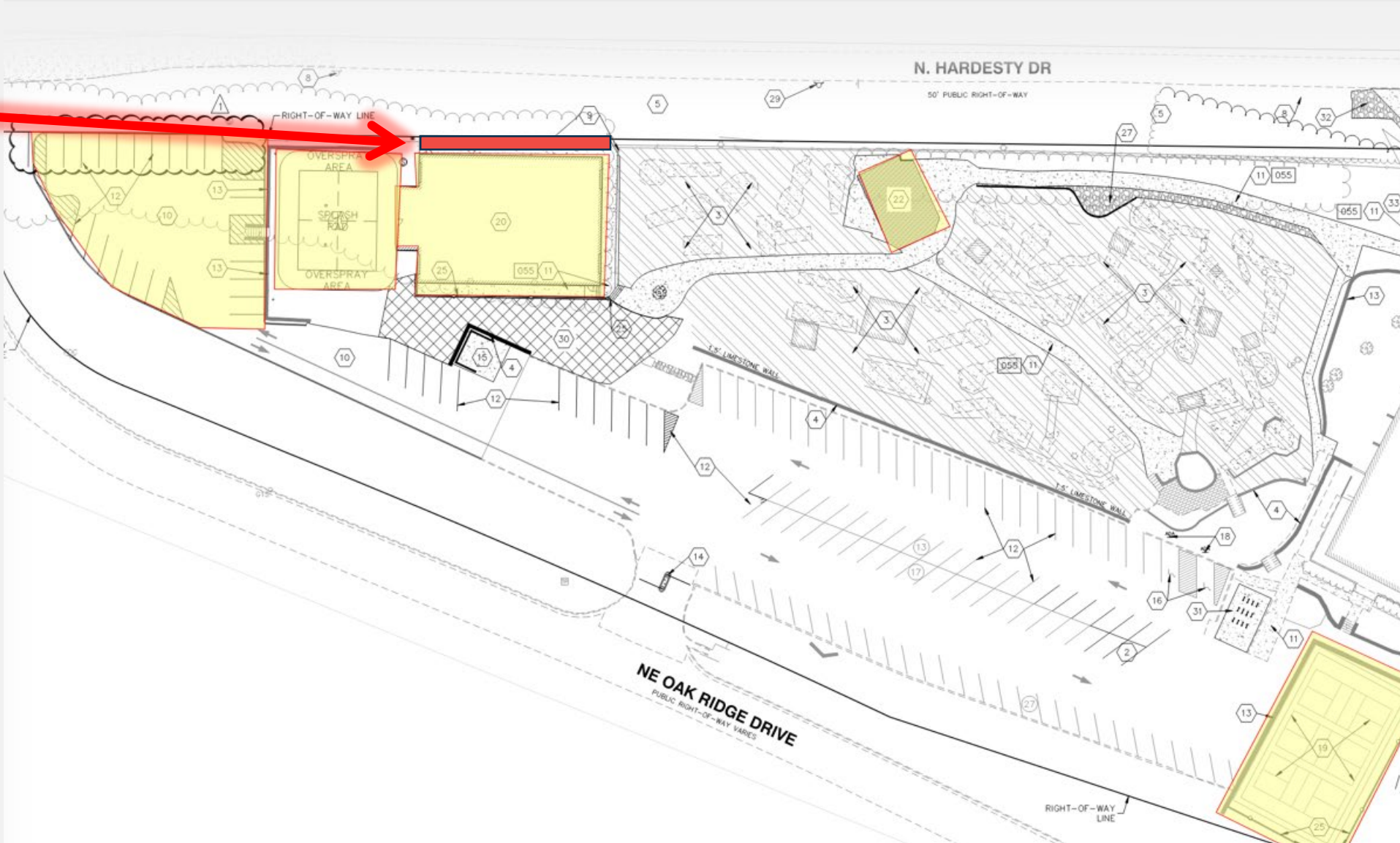
AFTER

Deviation (Condition #6)

Required
Setback = 20'

Proposed
Setback = 9'

Deviation
Requested = 11'



Staff Recommendation

- Approval with Conditions

CPC Recommendation

- Approval with Conditions