



Street Smarts

Design + Build

Fall 2020 Traffic Calming Projects

Prepared for: TIO Committee

9.23.20

Bloomberg Philanthropies Asphalt Art Initiative

Ronald McDonald House Charities Plan

Volker Traffic Calming Pilot

**Bloomberg
Philanthropies**



**Ronald McDonald
House Charities***
Kansas City



Goals:

- **Calm traffic to create safer road conditions for all users**
- **Enhance the street for residents and others to enjoy, appreciate, cherish**

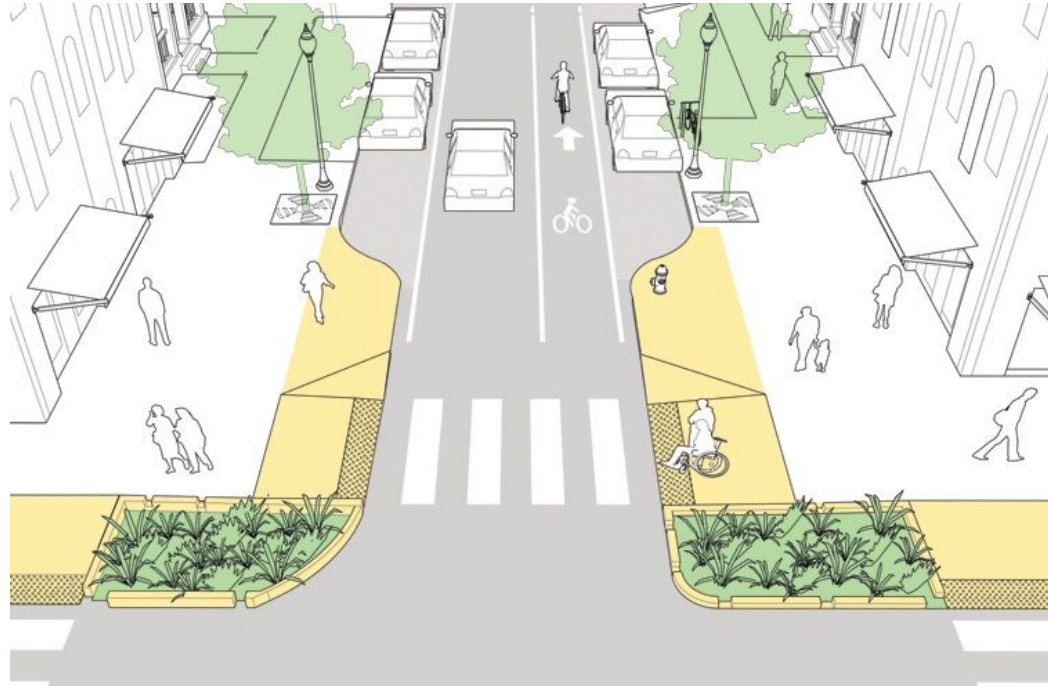
Similarities:

- Curb extensions to narrow lanes and tighten turn radii
- Stop signs relocated into curb extensions for better visibility
- Curb extensions include artwork
- No loss of parking

“Curb extensions increase the overall visibility of pedestrians by aligning them with the parking lane and reducing the crossing distance for pedestrians”



“Curb extensions visually and physically narrow the roadway, creating safer and shorter crossings for pedestrians while increasing the available space for street furniture, benches, plantings, and street trees. They may be implemented on downtown, neighborhood, and residential streets, large and small”



Traffic Calming Fact Sheets

May 2018 Update

Corner Extension/Bulb-Out

Description:

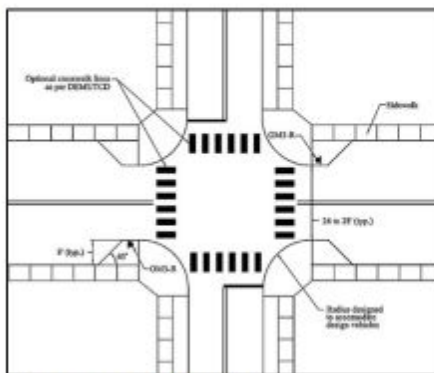
- Horizontal extension of the sidewalk into the street, resulting in a narrower roadway section
- If located at a mid-block location, it is typically called a choker

Applications:

- When combined with on-street parking, a corner extension can create protected parking bays
- Effective method for narrowing pedestrian crossing distances and increase pedestrian visibility
- Appropriate for arterials, collectors, or local streets
- Can be used on one-way and two-way streets
- Installed only on closed-section roads (i.e. curb and gutter)
- Appropriate for any speed, provided an adequate shy distance is provided between the extension and the travel lane
- Adequate turning radii must be provided to use on bus routes



(Source: James Barrera, Horrocks, New Mexico)



(Source: Delaware DOT)



A Community of Transportation Professionals

Potential Impacts:

- Effects on vehicle speeds are limited due to lack of deflection
- Can achieve greater speed reduction if combined with vertical deflection
- Smaller curb radii can slow turning vehicles
- Shorter pedestrian crossing distances can improve pedestrian safety
- More pedestrian waiting areas may become available
- May require some parking removal adjacent to intersections

FHWA on Curb Extensions



Purpose:

- Improves safety for pedestrians and motorists at intersections; increases visibility and reduces speed
- Encourages pedestrians to cross at designated locations.
- Prevents motor vehicles from parking at corners.

Additional Benefits:

Shorter Crossing Distances for pedestrians

Narrower travel lanes to slow traffic

Enhance aesthetics of the neighborhood





2018 Oak St



2017 Warwick Blvd



2017 Troost Ave



Bloomberg Philanthropies



Applicant



Fiscal Sponsor +
Community Engagement



Street Smarts
Design + Build

Project Management

Bloomberg Asphalt Art Initiative

KCMO - 1 of 16 cities selected out of 210 applicants.

“This Asphalt Art Project will build on our ongoing efforts to create more opportunities for Kansas Citians to get outdoors and will help the City revitalize public spaces for all to enjoy,”

“I am proud that Kansas City is leveraging community partnerships for neighborhood projects, and I look forward to seeing local artists’ work on the streets of Westport.”

- Mayor Quinton Lucas



Westport Road & Wyandotte St.

Four curb extension areas to be painted by four different local artists

RFP for curb extension art was issued in Early Aug. Deadline was Aug 31st.

Received 27 submissions.

Community Advisory Panel has been formed and will select the winning artists.

Final art drafts and site plan will be included in permit application

Community painting in center of the intersection

Mid October intall

42" DIAMETER POTS

1,522 SqFt

954 SqFt

998 SqFt

497 SqFt

612 SqFt

NEW STOP SIGNS

MICROMOBILITY HUB

LUV
MIDTOWN
KC

28.0'

20.0'

LEGEND:

- Planter Typ.
- New Stop Sign Location
- Stone





RONALD MCDONALD
HOUSE CHARITIES
KANSAS CITY

vireo



Street Smarts
Design + Build

2500 Cherry St.

Serenity garden designed by Vireo; Installed by MegaKC over the summer of 2020

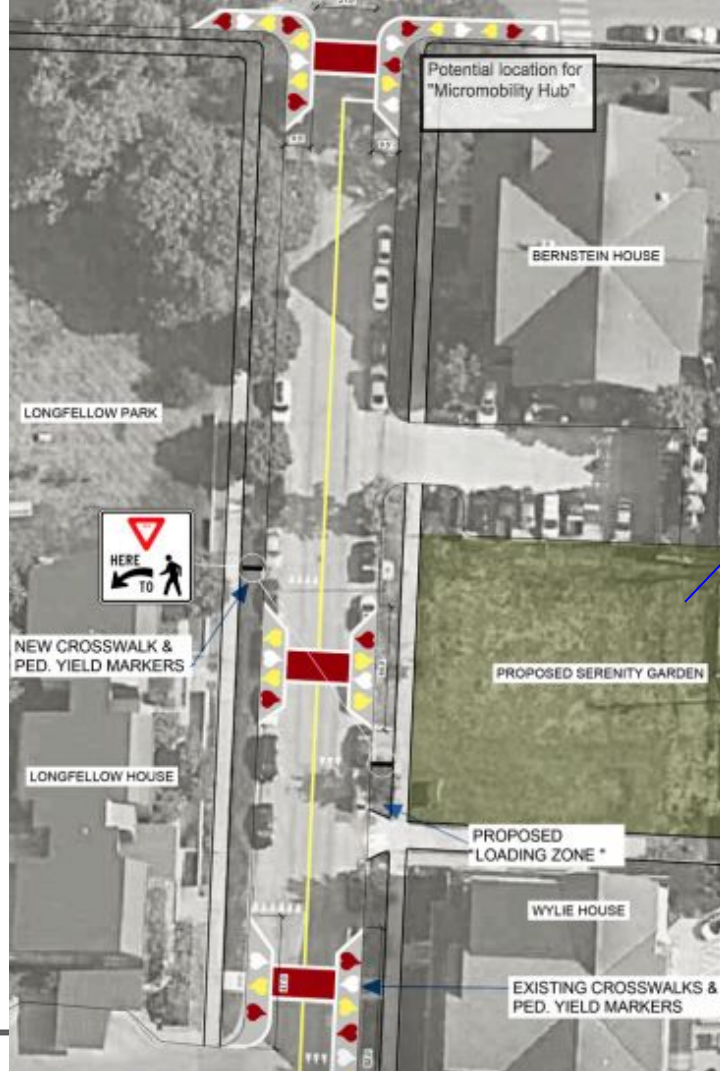
Traffic calming plan will compliment the garden and allow RMH families and visitors to more easily access the garden

Fully funded by Ronald McDonald House Charities

Installation immediately after permit is received



Ronald McDonald House



Serenity Garden



Street Smarts
Design + Build

Ronald McDonald House



Street Smarts
Design + Build

Volker Traffic Calming Pilot

38th and Wyoming St.

Funded through PIAC in 2016

Neighborhood residents, GBA, & KCMO have collaborated to create the plan

Late October install



SITE QUANTITIES:

- BULB OUT PAINT: 1,900sf
- CROSSWALK PAINT: 150sf
- STOP SIGN RELOCATION: 4
- PLANTERS: 15
- BOLLARDS: 15

LEGEND:

- Planter Typ.
- Bollard Typ.
- New Stop Sign Location

SCALE: 1"=20'

**WYOMING STREET & VALENTINE ROAD**

Volker Neighborhood | Kansas City, MO

September 08, 2020

**Street Smarts**
Design + Build

Materials for curb extensions





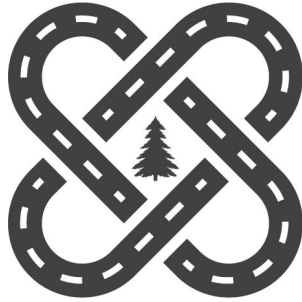
Volker: Volker NA has signed a maintenance agreement set forth by KCMO. Neighborhood will maintain traffic calming elements; KCMO will maintain MUTCD elements.



Bloomberg: Installation will be maintained by Midtown KC Now. Project is located within Main St. CID and Broadway CID.



Ronald McDonald House: Agreement in place with the Parks Dept. RMH is responsible for maintenance but Parks dept is willing to assist.



Street Smarts

Design + Build

DuRon Netsell

DuRon@StreetSmartsDesignBuild.com

417.496.5134