



ORDINANCE NO. 250661

Sensor Network and Watershed Digital Twin, Renewal No. 1

Authorizing a \$2,561,500.00 Professional, Specialized, or Technical Services contract with D3 Water, LLC, for Renewal No. 1 for the Sensor Network and Watershed Digital Twin project; authorizing a maximum expenditure of \$2,678,000.00; providing for four successive renewal options subject to City Council approval; and recognizing this ordinance as having an accelerated effective date.

August 19, 2025

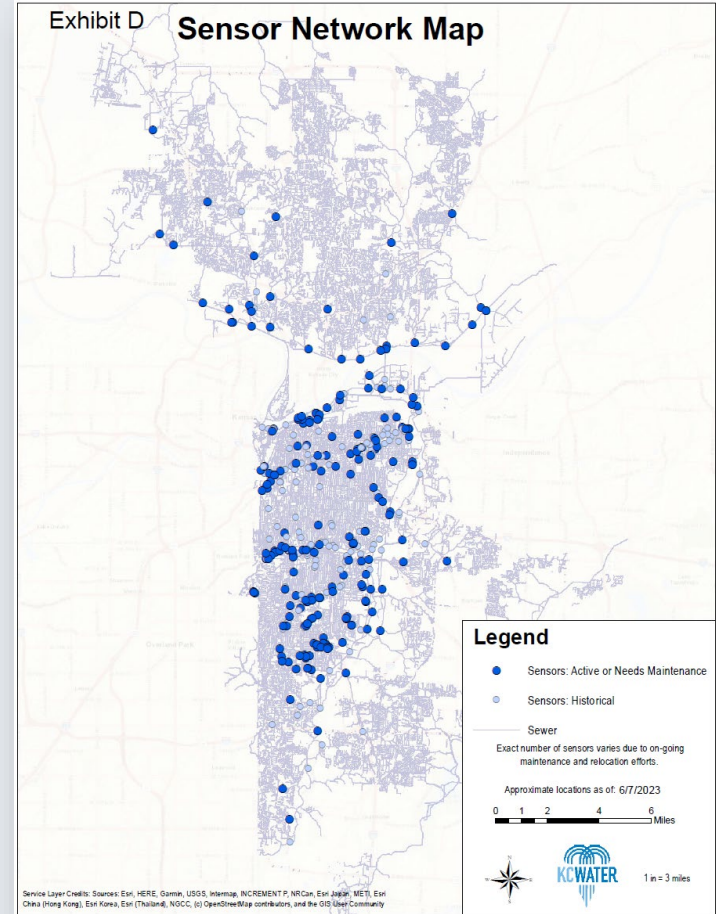
Transportation, Infrastructure & Operations
Committee



ORDINANCE NO. 250661

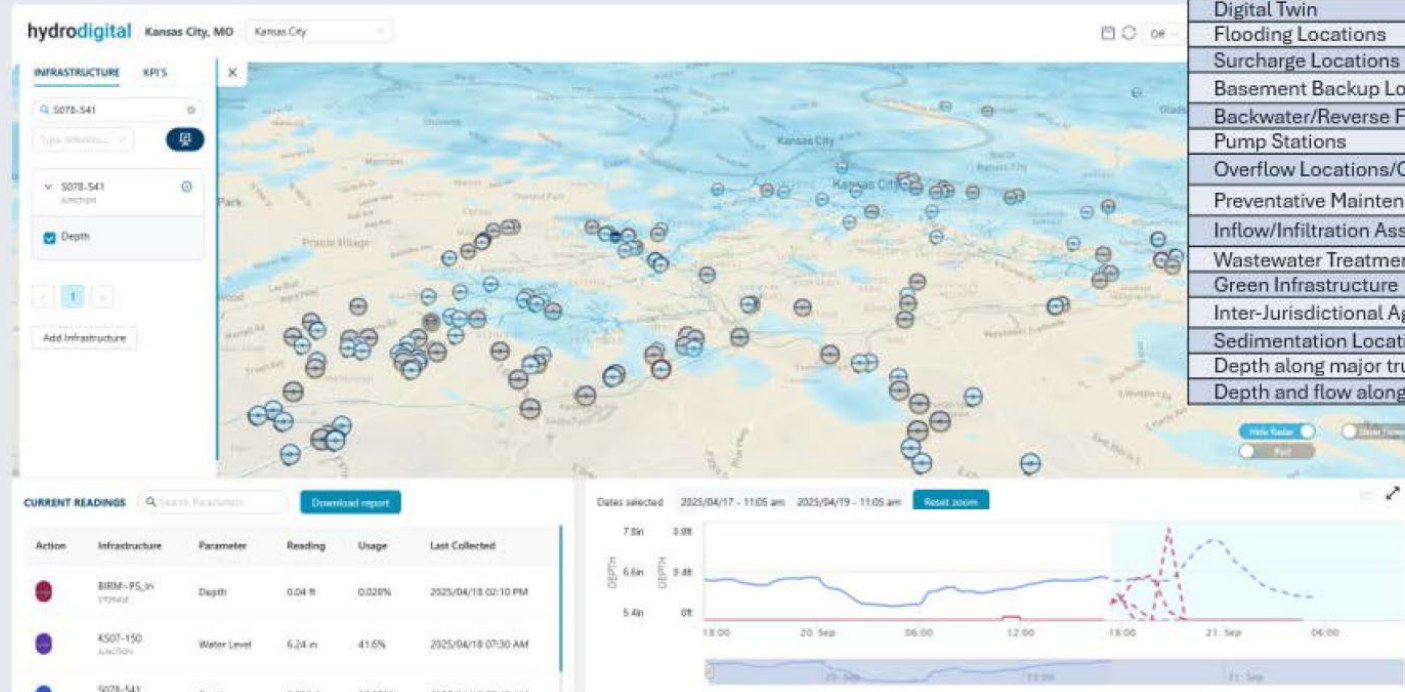
Details:

- Operate and maintain the current smart sensor network
- Expand and modify the sensor network
- Interface with KC Water's new wastewater SCADA system being implemented
- Operate and maintain a flow and/or depth monitor network with up to 300 locations



ORDINANCE NO. 250661

- 300 Permanent sensors
- 111 Temporary sensors



Use Cases

| |
|---|
| Digital Twin |
| Flooding Locations |
| Surcharge Locations |
| Basement Backup Locations |
| Backwater/Reverse Flow Conditions |
| Pump Stations |
| Overflow Locations/Consent Decree |
| Preventative Maintenance (Blockage Detection) |
| Inflow/Infiltration Assessment |
| Wastewater Treatment |
| Green Infrastructure |
| Inter-Jurisdictional Agreement Locations |
| Sedimentation Locations (Zero Velocity) |
| Depth along major trunk line to monitor HGL |
| Depth and flow along major trunk line |

ORDINANCE NO. 250661

Details:

- Development, implementation, maintenance and operation of a digital twin of each watershed identified in Kansas City
- Use of HydroDigital platform to host digital twins



ORDINANCE NO. 250661

M/WBE CREO KC Participation

CREO KC approved the Contractor Utilization Plan on August 8, 2025, with 11% MBE and 11% WBE participation.

MBE Firms

NEER Technologies, Inc.

WBE Firms

A+ Engineering Services, LLC

THANK YOU