



**KANSAS CITY  
MISSOURI**

# Ordinance #250602

Authorizing Amendment No. 3 to a design professional services agreement with WSP, Inc. in the amount of \$695,794.23 for Grand Boulevard Bridge Bike/Pedestrian Accommodations project for a total contract amount of \$1,797,249.16; and recognizing this ordinance as having an accelerated effective date.



# Ordinance #250603

Approving the recommendations of Arterial Street Impact Fee District G Committee; appropriating \$575,000.00 from the Unappropriated Fund Balance of the Arterial Street Impact Fee Fund to Holmes Road - 137th Street to Blue Ridge Boulevard Project in the Arterial Street Impact Fee Fund; and recognizing this ordinance as having an accelerated effective date.



# Ordinance #250603 Holmes Road Project

## Scope

- Holmes Road – 135th to Blue Ridge
- Add sidewalks, curb and gutter
- Add 10-ft shared-use path
- Rebuild roadway
- New lighting
- New intersection at Blue Ridge
- Quiet Zone RR Crossing improvements

## Funding

\$10M Construction Budget total  
GO Bond

- FY25 \$1M
- FY26 \$4M
- FY27 \$5M

PIAC funded design \$900k

**Need funding for ROW acquisition  
\$575k – Arterial Impact Fee**

# Impact Fee Districts

Calculation of funds available by  
Impact Fee District as of 2/28/2025

**A-** Airport Development Impact Fee

**B-** North Oak Development Impact  
Fee

**C-** Shoal Creek Development Impact  
Fee

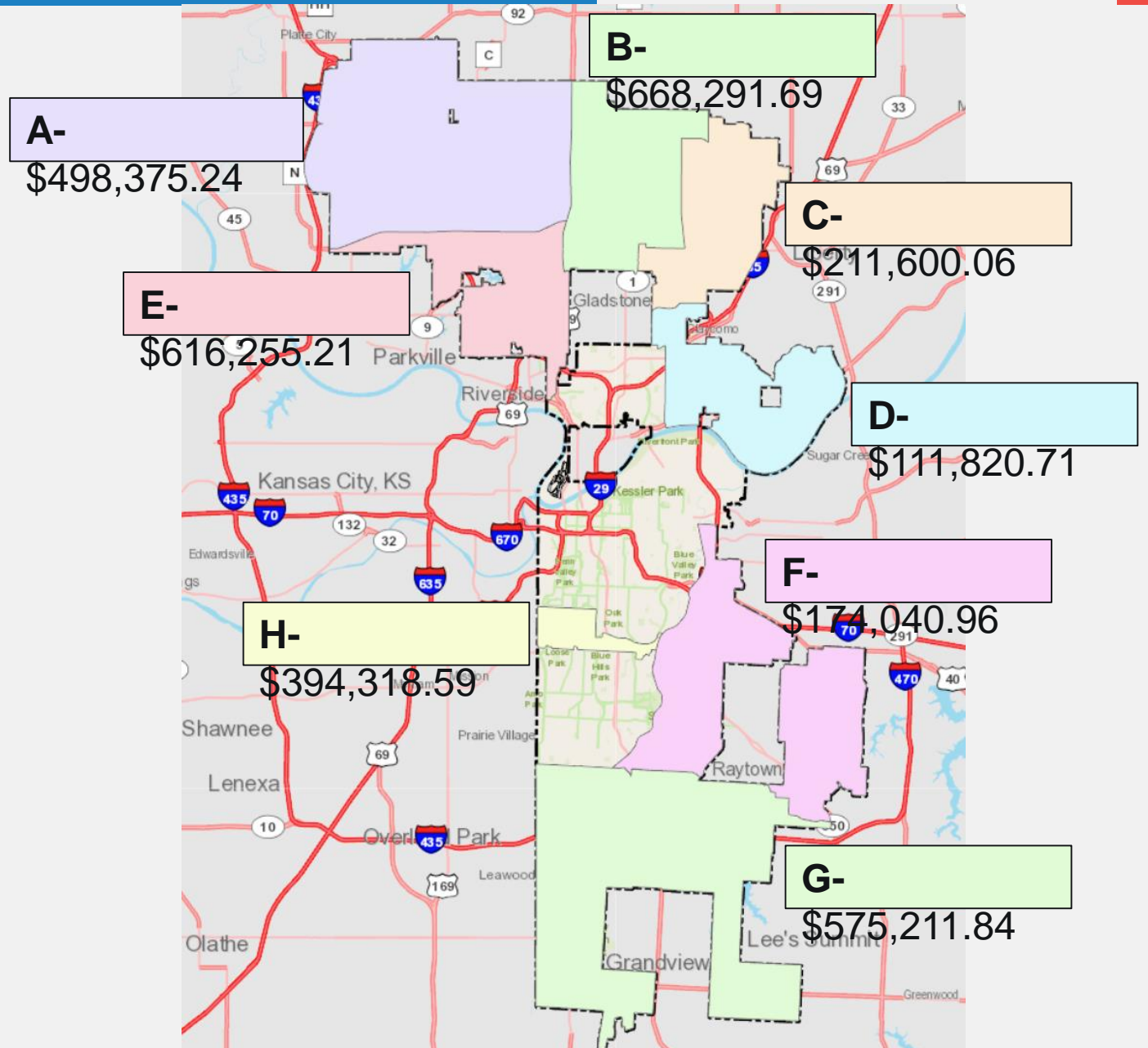
**D-** Birmingham Develop. Impact Fee

**E-** Line Creek Development Impact  
Fee

**F-** East Development Impact Fee

**G-** South Development Impact Fee

**H-** Plaza Development Impact Fee



# Ordinance #250604

Authorizing the Director of Public Works to execute Amendment No. 1 to the 2025-26 Cooperative Agreement with Bike Share KC in the amount of \$166,040.00 for a total contract amount of \$581,000.00.



# Ordinance 250604

Bike Share Service Contract Amendment

7/29/25

Transportation, Infrastructure, and Operations Committee

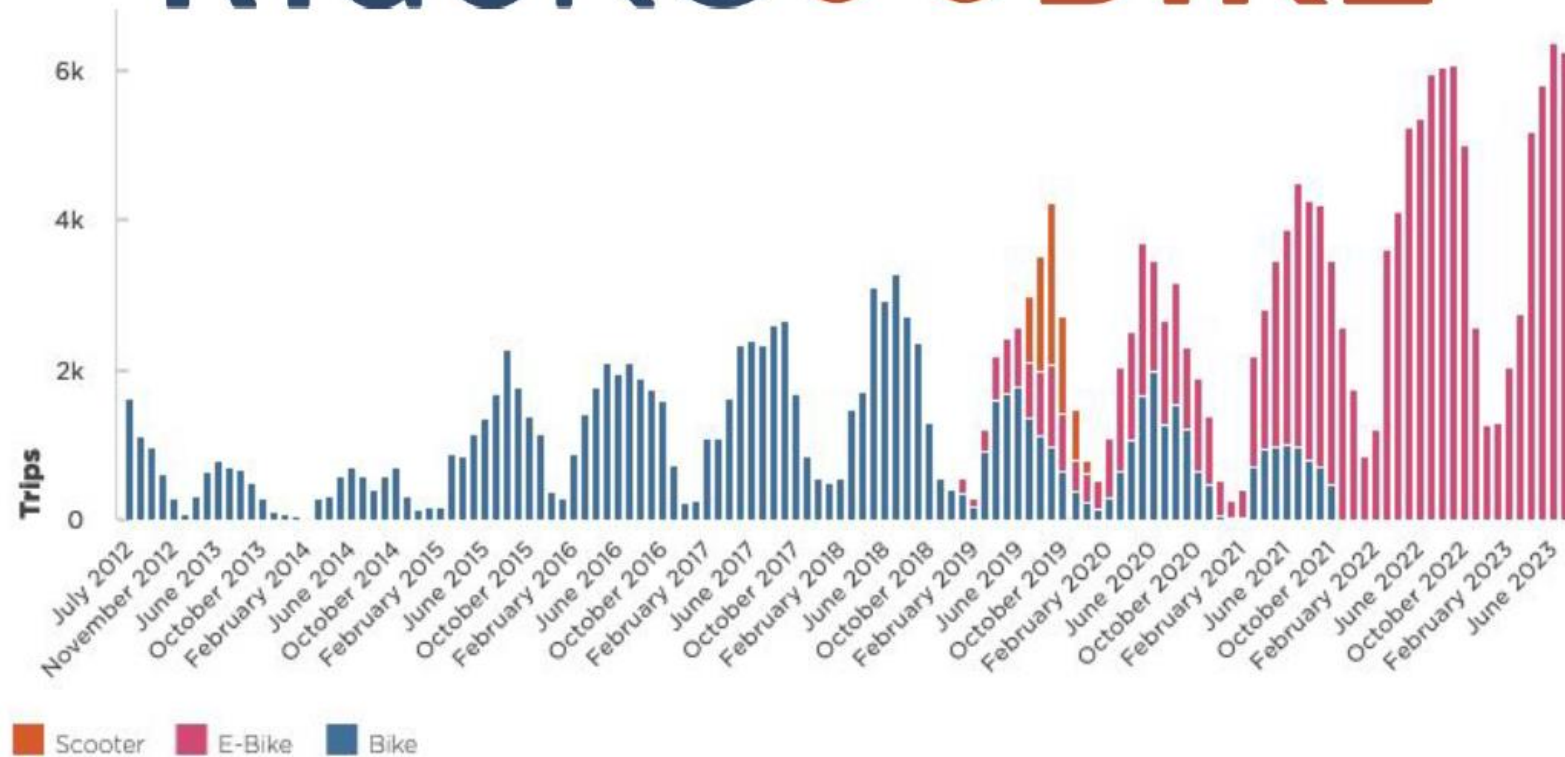


# Ordinance Details

- Current contract: \$414,960
  - Allows for Operation and Maintenance of 247 existing bikes
- Total contract amount with amendment: \$166,040.00
  - Match funds for TAP Grant (purchase 81 new bikes)
  - Match funds for Carbon Reduction Program grant (80 new bike batteries)
  - O&M for 6 months for 81 new bikes



# RideKC BIKE

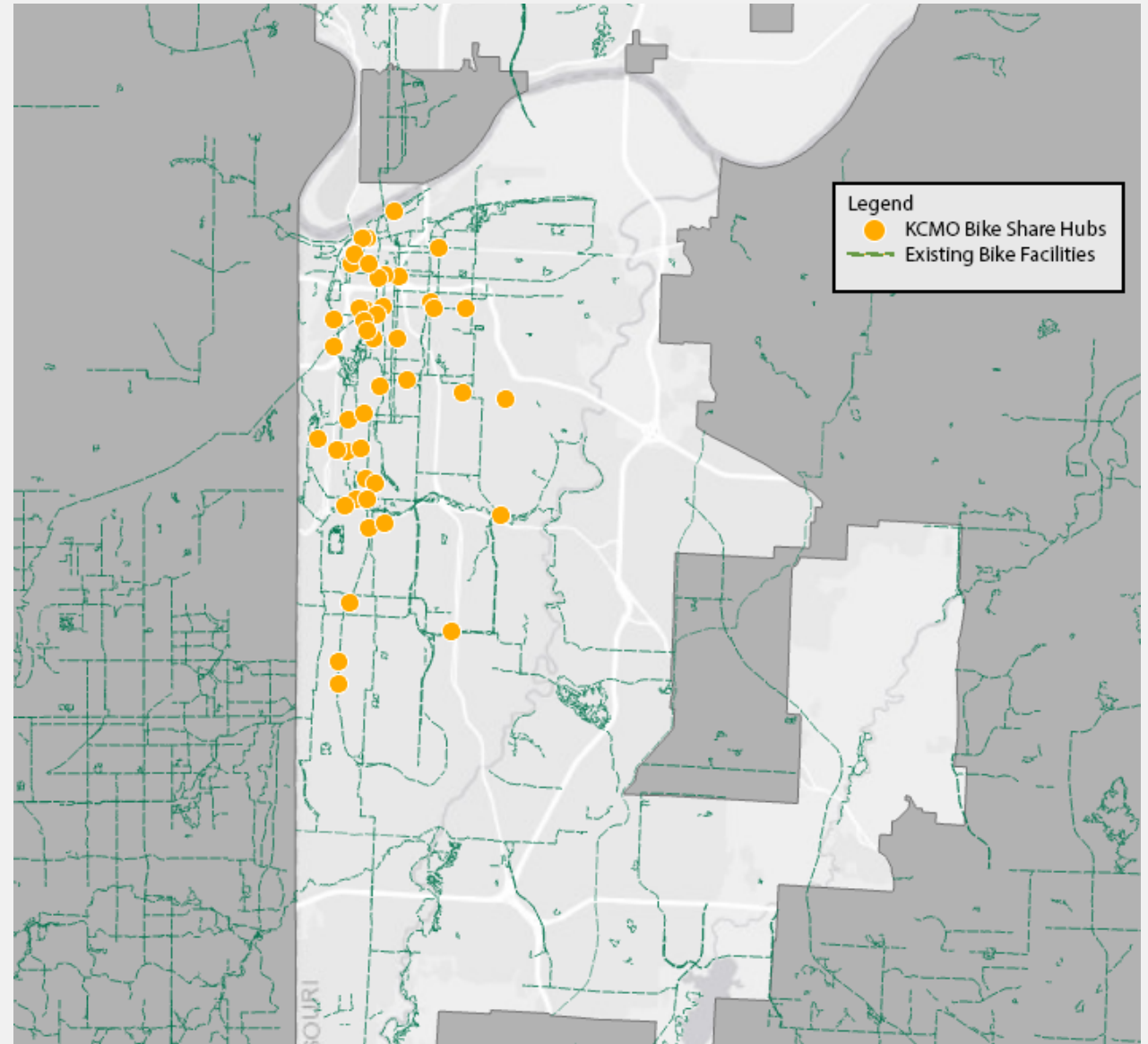


# Bike Share Equity

- Bike Share for All Program
  - \$10 Annual Memberships for low-income individuals (regularly \$149)
- Partner Organizations
  - Hope Faith Assistance Campus
  - Healing House KC
  - Westside Housing Org
  - Jerusalem Farm
  - Midtown KC Now
  - Rosedale Development Association

## Hubs and Service Area Map

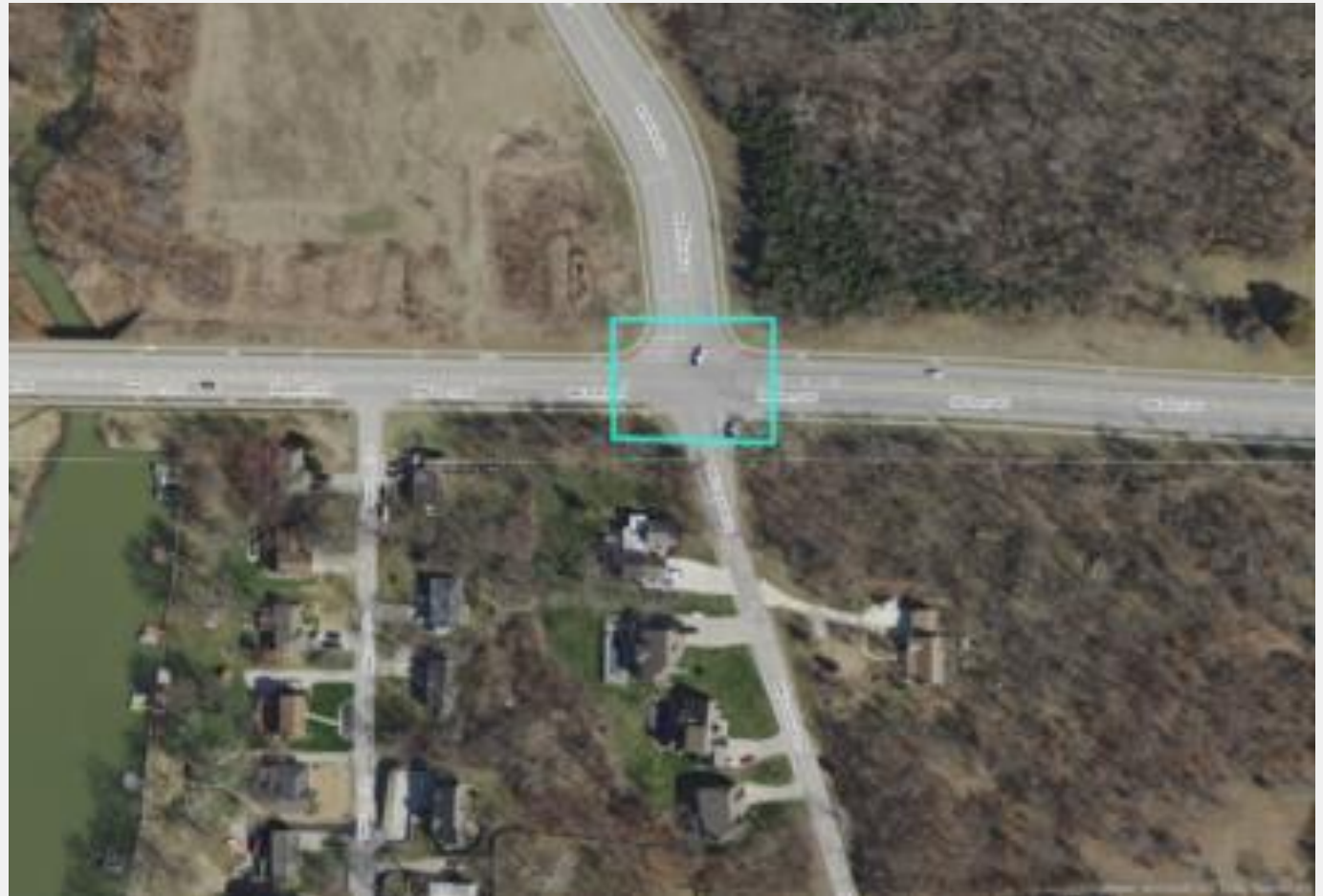
District	Existing Hubs
CD 1	NA
CD 2	NA
CD 3	8
CD 4	28
CD 5	1
CD 6	8
<b>Total</b>	<b>45</b>



# Questions & Discussion

# Ordinance #250607

Approving the recommendations of Arterial Street Impact Fee District E Committee; appropriating \$600,000.00 from the Unappropriated Fund Balance of the Arterial Street Impact Fee District E - Line Creek Fund to Northwest Barry Road & North Amity Avenue - Traffic Signal Project; and recognizing this ordinance as having an accelerated effective date.



## Ordinance #250607

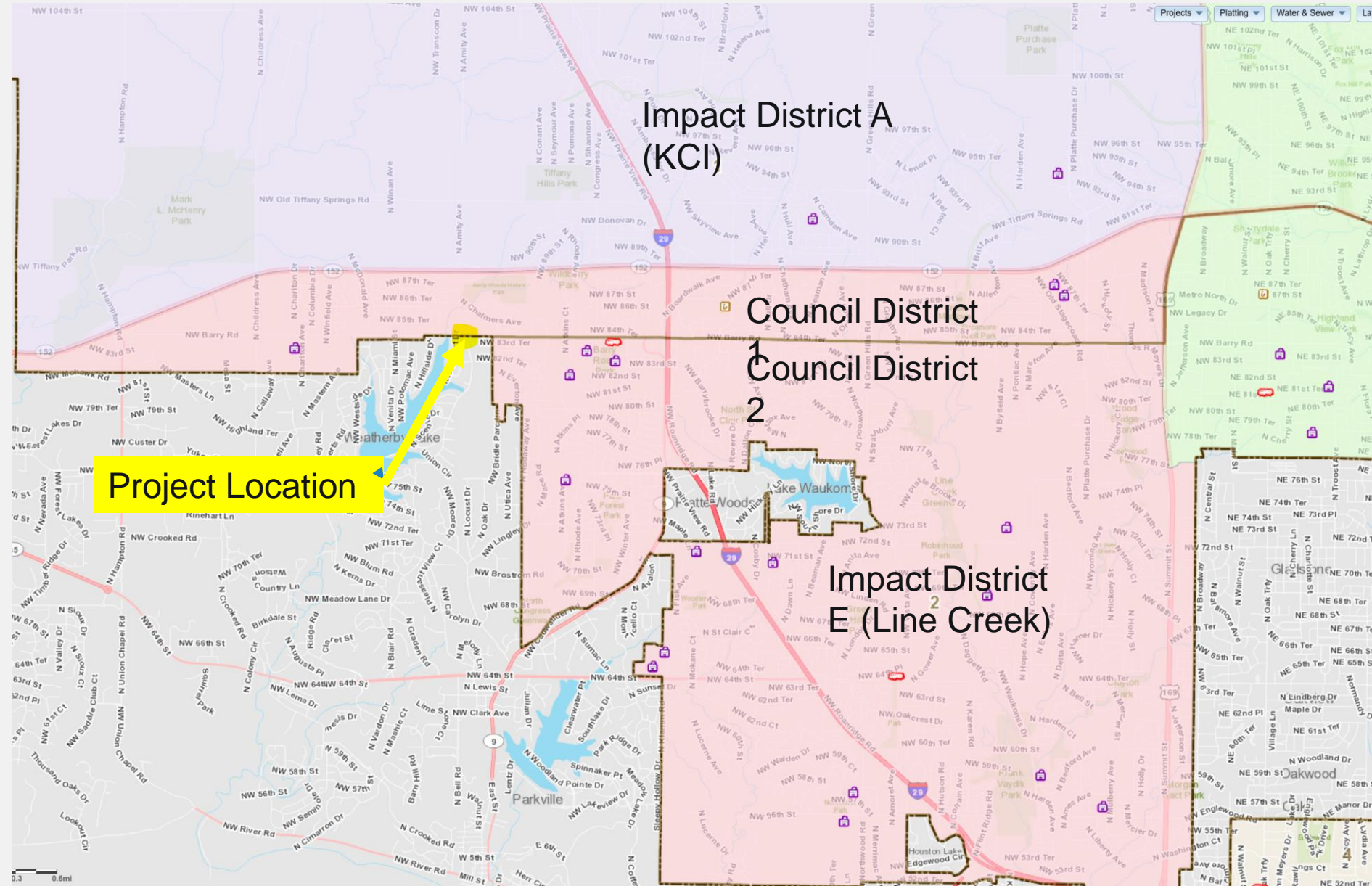
- Unsignalized intersection of Amity and Barry Road
- Signal became warranted in 2022
- Southern half of intersection is in Weatherby Lake
- History of crashes at location.
- Total Construction Bid Cost: \$835,635
- Sources: Arterial Impact Fee \$600,000
- Pending Cooperative Agreements:
  - Weatherby Lake Contribution - \$100,000
  - Platte County – to be discussed





## Arterial Impact Fee Districts do not match Council District Boundaries

Identified as an issue to rectify by updating city code section 39.



# Impact Fee Districts

Calculation of funds available by  
Impact Fee District as of 2/28/2025

**A-** Airport Development Impact Fee

**B-** North Oak Development Impact  
Fee

**C-** Shoal Creek Development Impact  
Fee

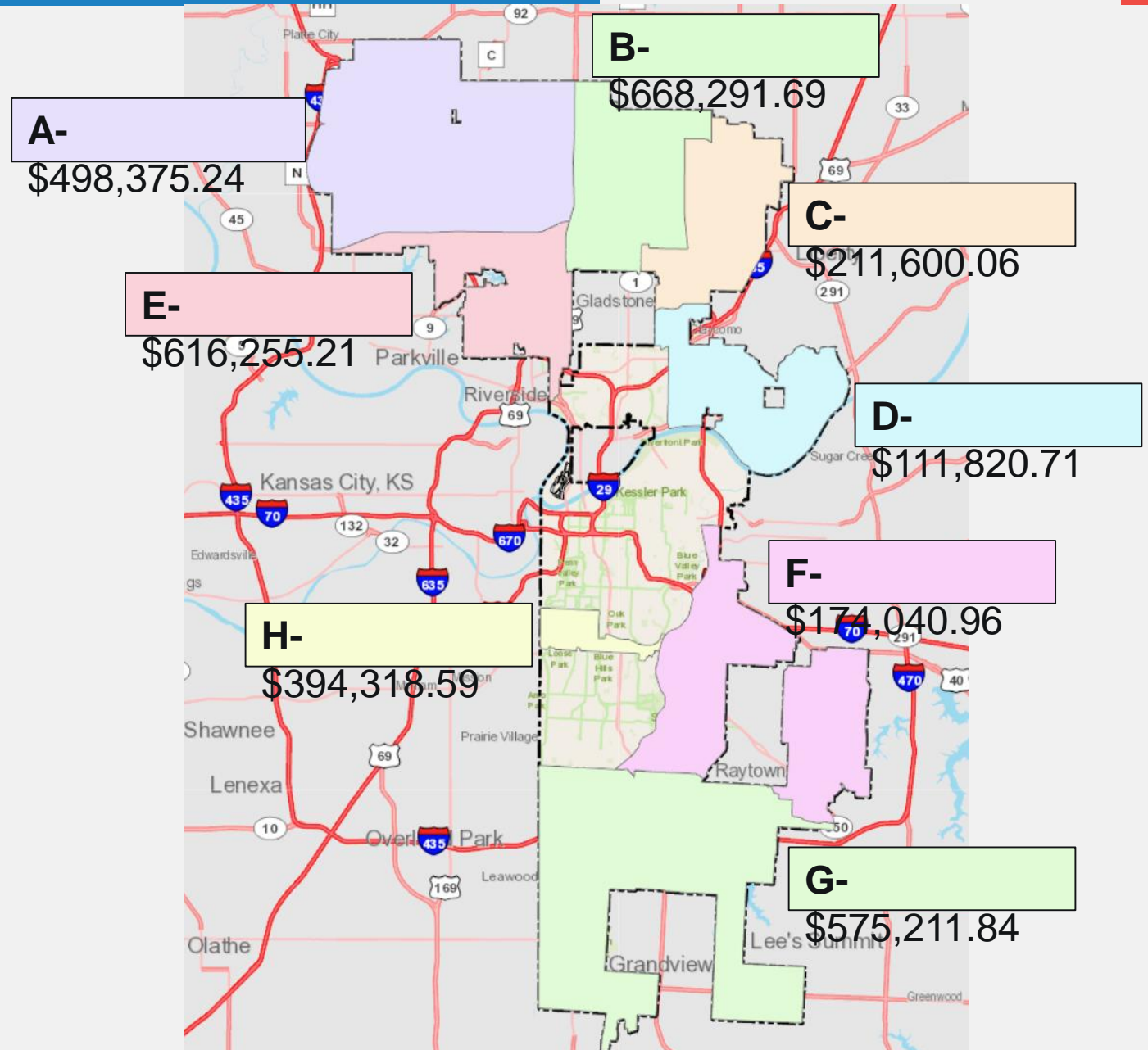
**D-** Birmingham Develop. Impact Fee

**E-** Line Creek Development Impact  
Fee

**F-** East Development Impact Fee

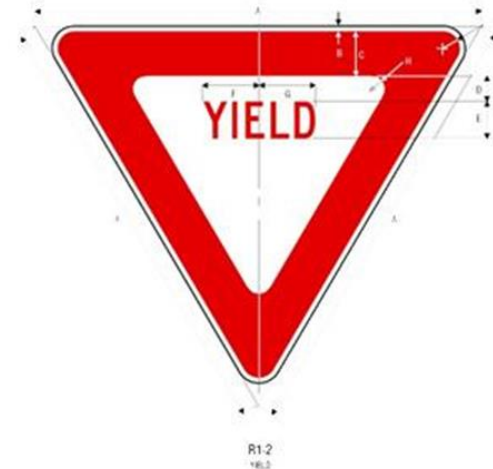
**G-** South Development Impact Fee

**H-** Plaza Development Impact Fee



# Ordinance #250608

Approving various Traffic Regulations in compliance with Chapter 70 of the Code of Ordinances.



A	B	C	D	E	F	G	H	J
18	.375	2	1	1.5 C	2.375	2.88	.625	1.5
24	.375	3	1.375	2 C	3.25	3	.875	1.5
30	.625	4	1.75	2.5 C	3.88	3.625	.875	1.5
36	.75	5	2	3 C	4.688	4.375	1.25	2
48	1	6	2.75	4 C	6.25	5.875	2	3
60	1.5	8	3.5	5 C	8.875	7.25	2.5	4

COLORS: LEGEND: — RED (RETROREFLECTIVE)  
BACKGROUND — WHITE (RETROREFLECTIVE)

1-2



04/14/06

1-92

\*Reduce spacing 50%  
\*\*See page 6-31  
\*\*\*See page 6-2 for arrow design