

KANSAS CITY MISSOURI

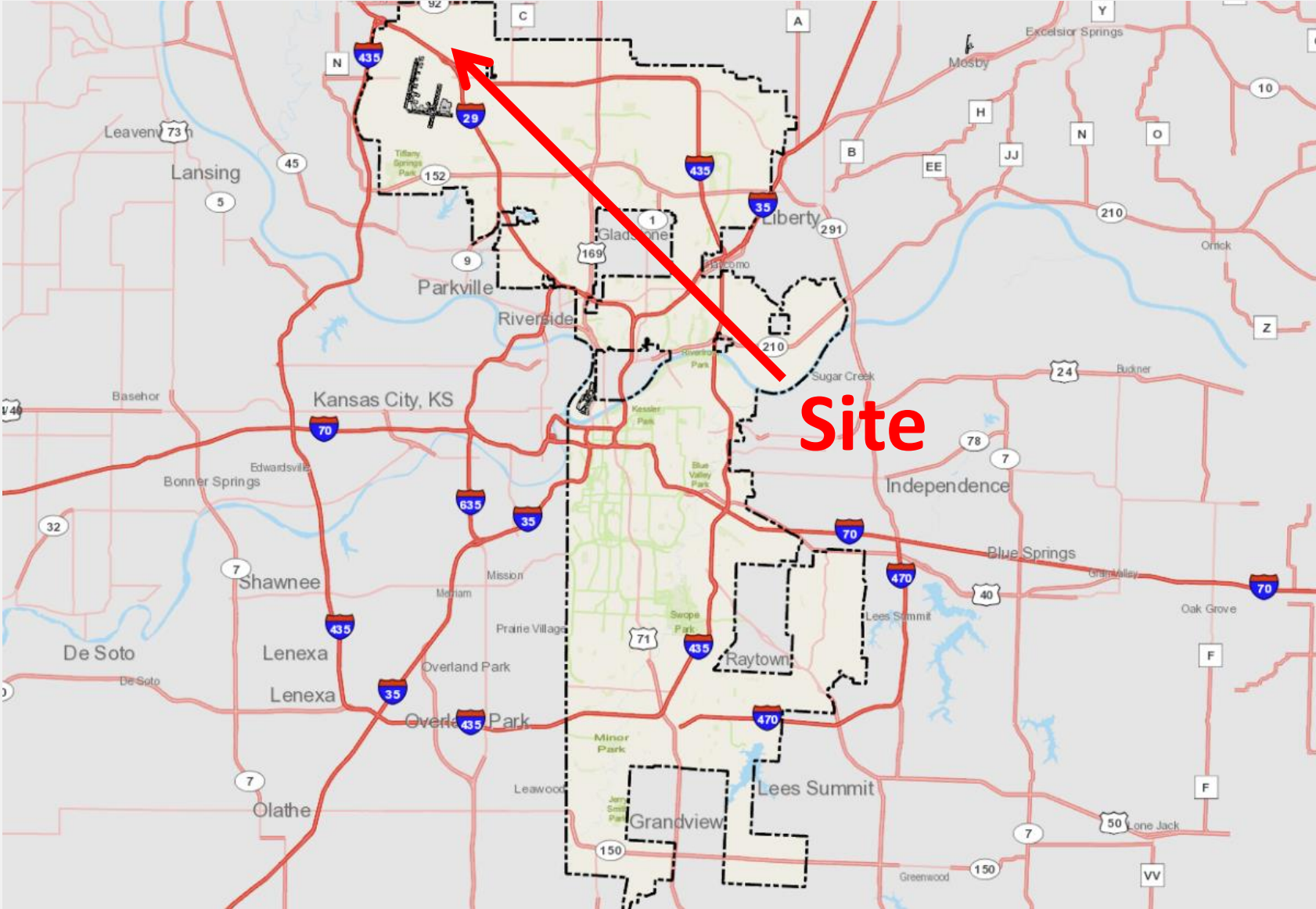
Development Plan CD-CPC-2024-00138

KCI 29 Logistics Park

November 20, 2024

City Plan Commission







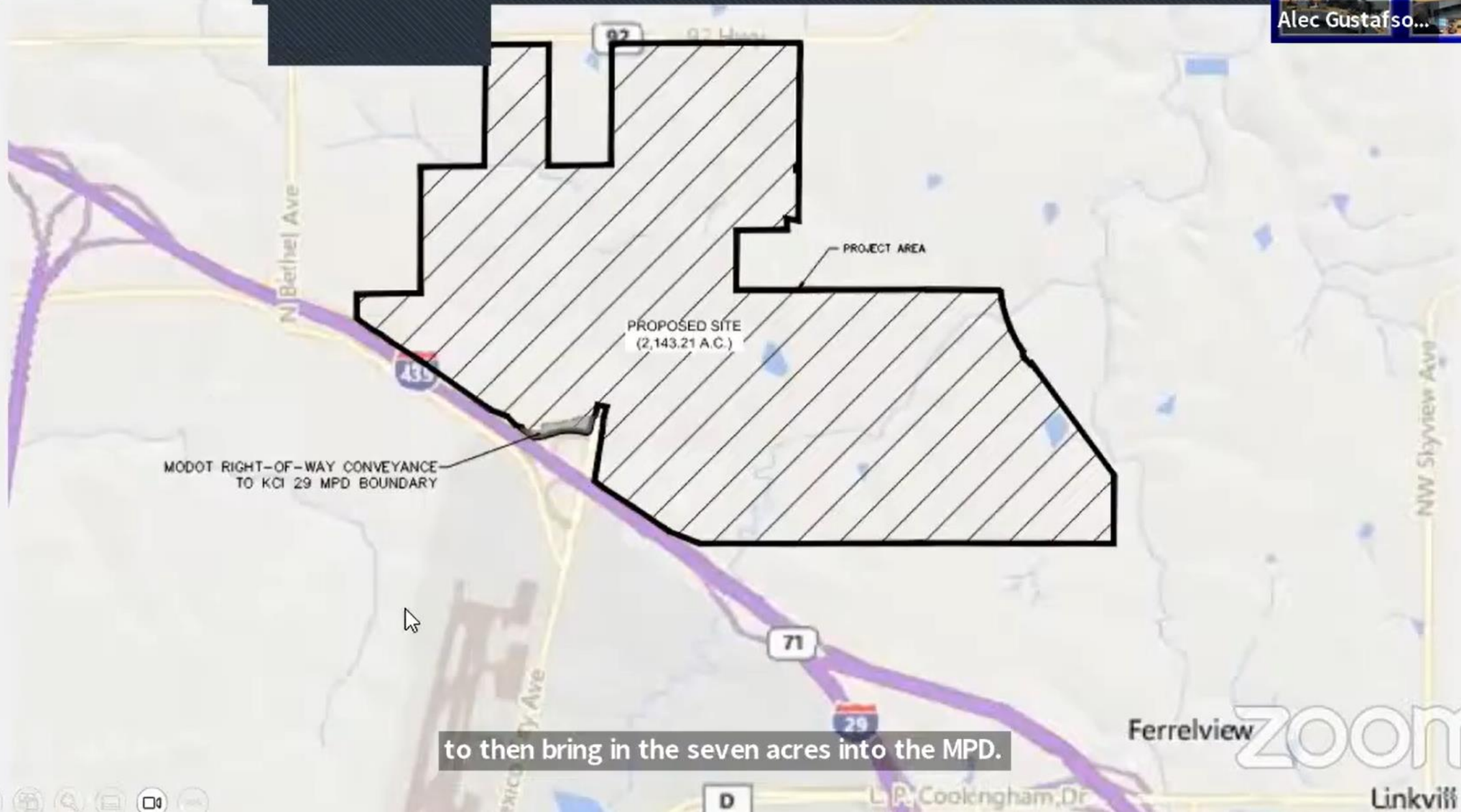
Case No. CD-CPC-2023-00097 – Ordinance No. 220883 passed on October 6, 2022, approved a rezoning from District M1-5 and AG-R to District MPD and allow:

- 20M sq ft of commercial office/warehouse development
- On 32 lots,
- 4 phases
- On about 2,136 acres



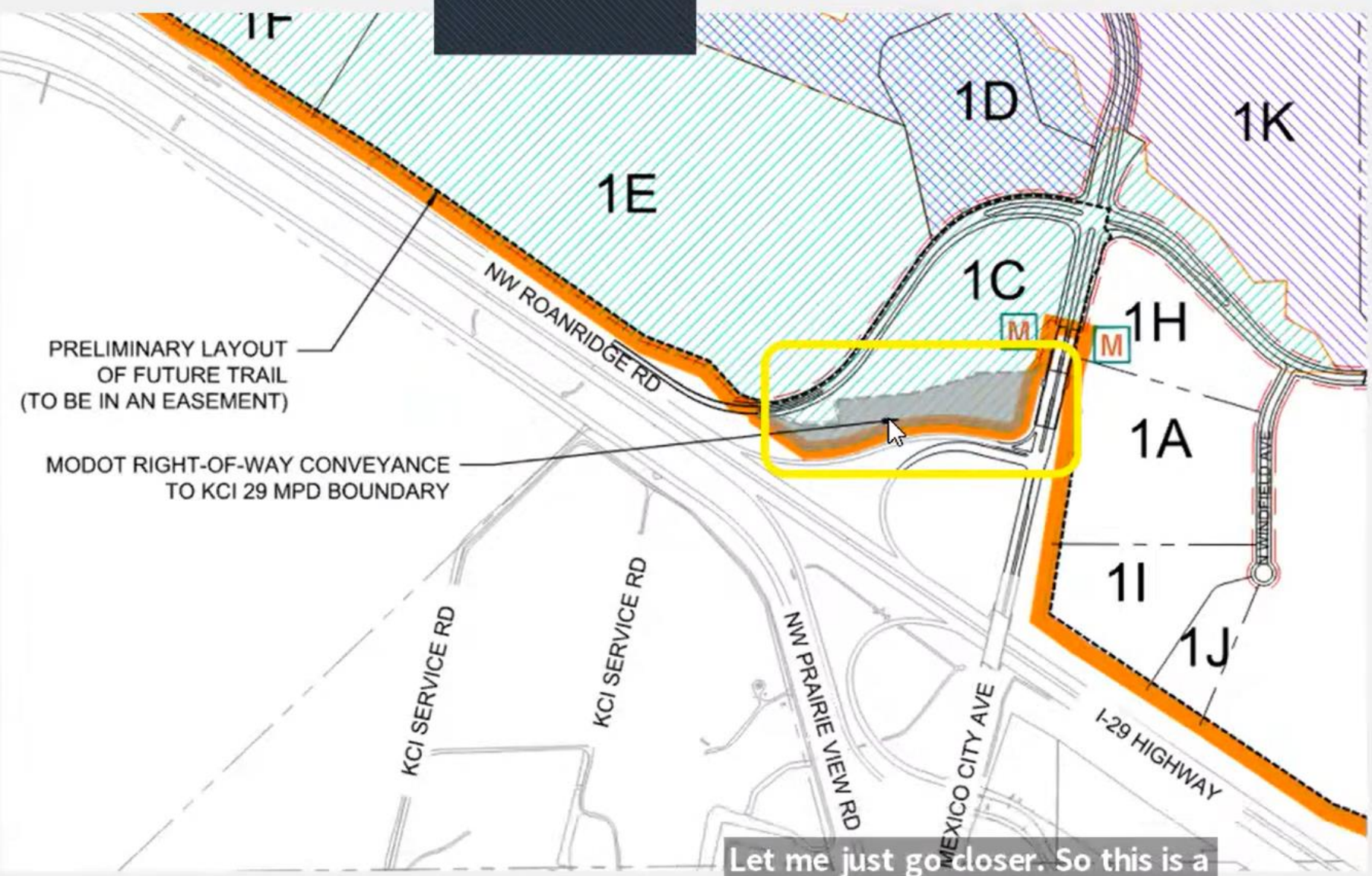
first project, tenant number one.

- **2,136 acres – MPD**
- **Request to amend the existing MPD (preliminary plat) to allow for expansion of the district by adding 7 acres to the overall district.**
- **Per 88-520-01 – Master Planned Development (MPD) zoning districts are established through the approval of a zoning map amendment in accordance with 88-515**
- **The rezoning will affect the 7-acre tract to be brought into the district**



to then bring in the seven acres into the MPD.





- 2,136 acres
- + 7 acres
- = 2,143 acres

Let me just go closer. So this is a



Staff Recommendation

Approval without conditions