



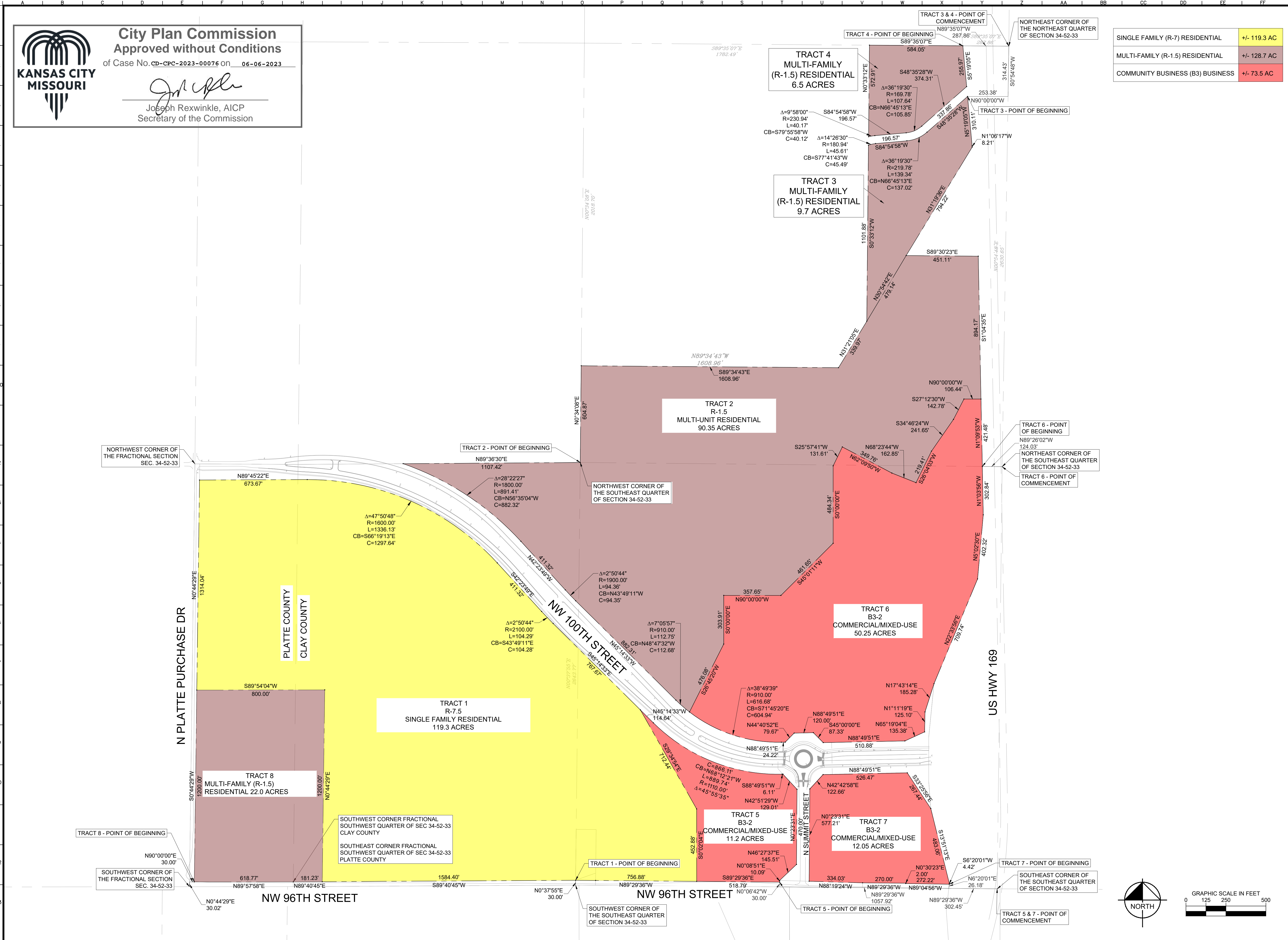
**City Plan Commission**  
Approved without Conditions

of Case No. CD-CPC-2023-00076 on 06-06-2023

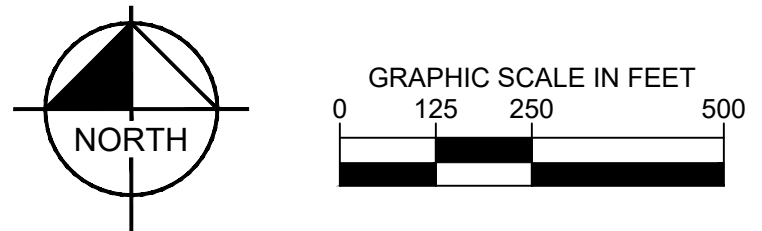
*Joseph Rexwinkle*  
Joseph Rexwinkle, AICP  
Secretary of the Commission

SINGLE FAMILY (R-7) RESIDENTIAL	+/- 119.3 AC
MULTI-FAMILY (R-1.5) RESIDENTIAL	+/- 128.7 AC
COMMUNITY BUSINESS (B3) BUSINESS	+/- 73.5 AC

Drawing name: K:\VNC\DEV\268258000\_More Form Rezoning\2 Design\CAD\PlanSheets\C1 - REZONING PLAN\_LEGAL DESCRIPTION.dwg Layout1 May 19, 2023 3:26pm by: PerlaDiosdado  
 This document, together with the concepts and designs presented herein, is an instrument of service, as an instrument of service, is intended only for the specific purpose and client for which it was prepared. Reuse of and improper reliance on this document without written authorization and adaptation by Kimley-Horn and Associates, Inc. shall be without liability to Kimley-Horn and Associates, Inc.



REVISIONS	
No.	DATE
 © 2023 KIMLEY-HORN AND ASSOCIATES, INC. 800 PENNSYLVANIA AVENUE, SUITE 100 PHOENIX, AZ 85003 WWW.KIMLEY-HORN.COM	
SCALE:	AS NOTED
DESIGNED BY:	JS
DRAWN BY:	JS
CHECKED BY:	MK
<div style="border: 1px solid black; padding: 5px; width: fit-content; margin: auto;">NOT FOR CONSTRUCTION</div>	
<h2>REZONING PLAN</h2>	
<h3>MANN FARM</h3> <p>KANSAS CITY, MO</p>	
ORIGINAL ISSUE:	03/23/2023
KHA PROJECT NO.	268258000
SHEET NUMBER	C1



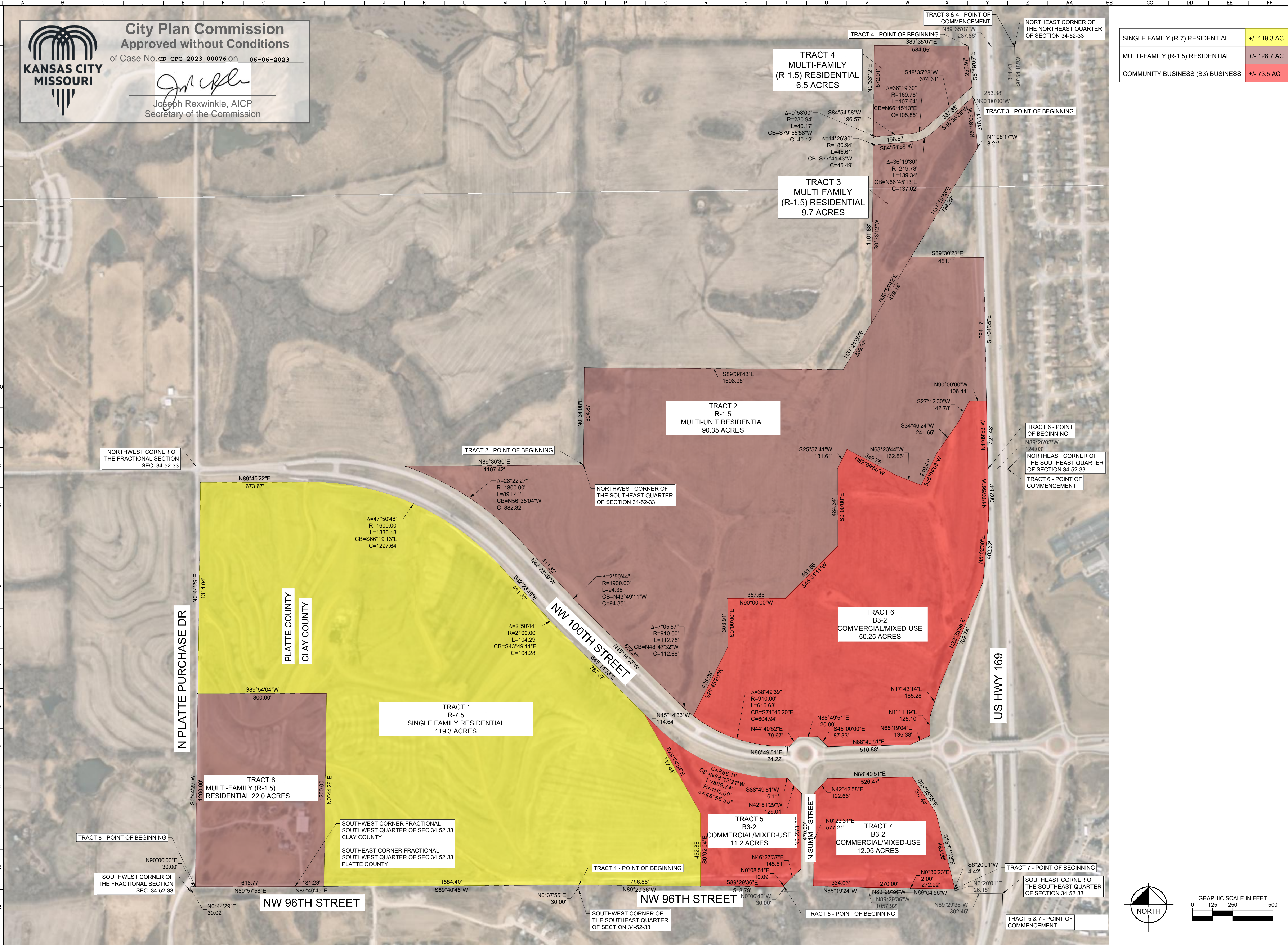


**City Plan Commission**  
Approved without Conditions

of Case No. CD-CPC-2023-00076 on 06-06-2023

*Joseph Rexwinkle*  
Joseph Rexwinkle, AICP  
Secretary of the Commission

Drawing name: K:\MCD\DEV\268258000\_Mann Farm Rezoning\2 Design\CAD\Plan\Sheets\C1 - REZONING PLAN\_LEGAL DESCRIPTION.dwg Layout1 Jun 05, 2023 9:00am by: Julia Swanson  
This document, together with the concepts and designs presented herein, as an instrument of service, is intended only for the specific purpose and client for which it was prepared. Reuse of and improper reliance on this document without written authorization and adaptation by Kimley-Horn and Associates, Inc. shall be without liability to Kimley-Horn and Associates, Inc.



SINGLE FAMILY (R-7) RESIDENTIAL	+/- 119.3 AC
MULTI-FAMILY (R-1.5) RESIDENTIAL	+/- 128.7 AC
COMMUNITY BUSINESS (B3) BUSINESS	+/- 73.5 AC

No.	REVISIONS	DATE	BY

**Kimley»Horn**  
© 2023 KIMLEY-HORN AND ASSOCIATES, INC.  
800 PENNSYLVANIA AVENUE, SUITE 100  
PHILADELPHIA, PA 19104  
PHONE 815-482-0330  
WWW.KIMLEY-HORN.COM

SCALE:	AS NOTED
DESIGNED BY:	JS
DRAWN BY:	JS
CHECKED BY:	MK

NOT FOR CONSTRUCTION

**REZONING PLAN**

**MANN FARM**  
KANSAS CITY, MO

ORIGINAL ISSUE:	03/23/2023
KHA PROJECT NO.	268258000
SHEET NUMBER	C1

