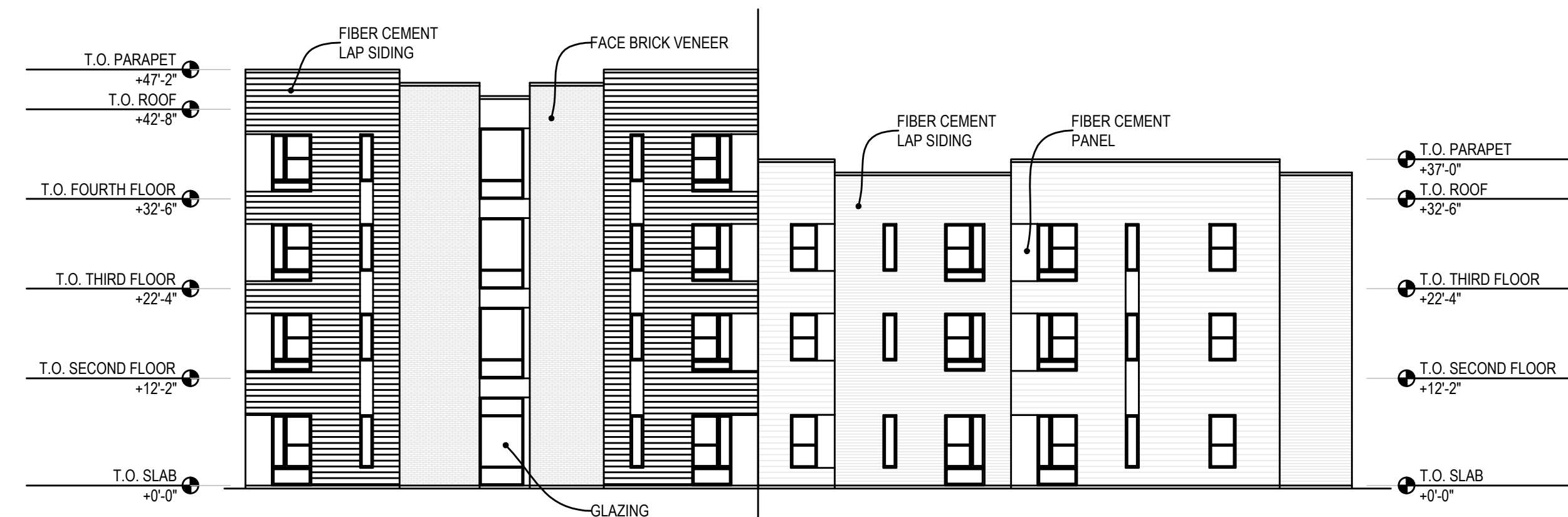
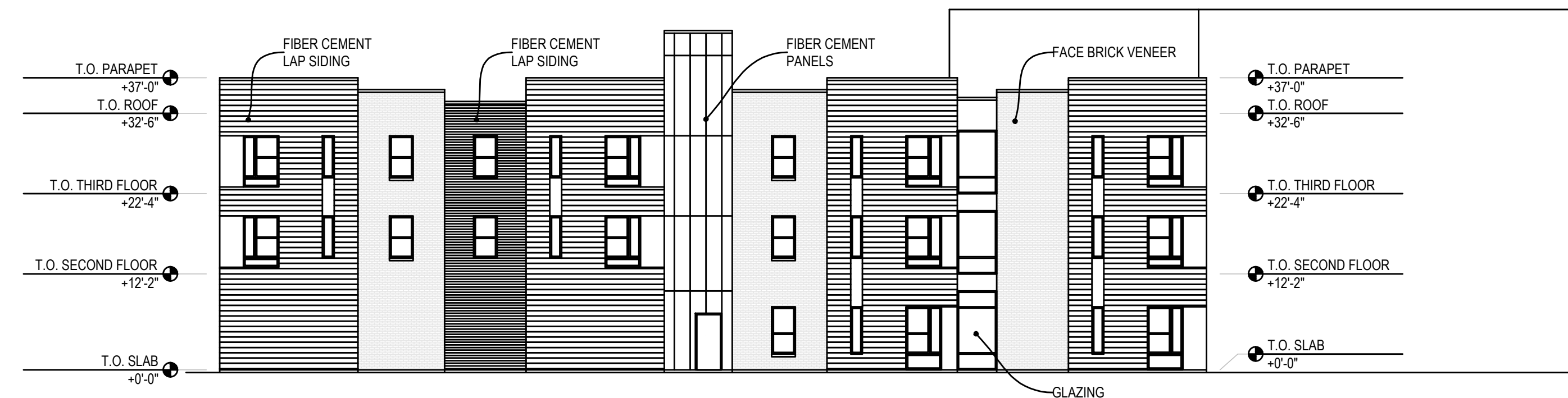


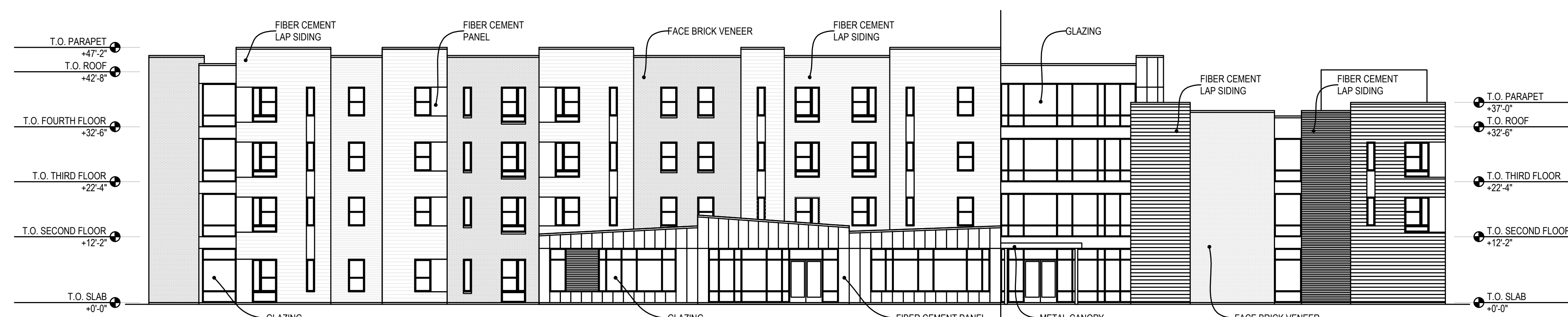
WEST ELEVATION



SOUTH ELEVATION



NORTH ELEVATION



EAST ELEVATION

K:\Projects\2014-2015\Reznick\MCL_MPDELEV.dwg Mar 20, 2015 - 11:24am

MAR 20, 2015	MPD SUBMITTAL	1	LEN KAMELAK
DATE	REVISIONS AND RECORD OF ISSUE	NO.	BY / CK / APP

T & B Project No. 04-3220	File Name: MCL_MPDELEV.dwg
DESIGNED BY: LBN DRAWN BY: ME CHECKED BY: LJG	DATE OF ORIGINAL ISSUE: 20 MAR 2015

THE PROFESSIONAL WHOSE SIGNATURE AND PERSONAL SEAL APPEARS ON THIS SHEET ASSUMES RESPONSIBILITY ONLY FOR WHAT APPEARS ON THIS PAGE, AND DISCLAIMS (PURSUANT TO SECTION 327.411 RSMO) ANY RESPONSIBILITY OF ALL OTHER PLANS, SPECIFICATIONS, ESTIMATES, REPORTS OR OTHER DOCUMENTS OR INSTRUMENTS NOT SEALED BY THE UNDERSIGNED PROFESSIONAL RELATING TO OR INTENDED TO BE USED FOR ANY PART OR PARTS OF THE PROJECT TO WHICH THIS PAGE REFERS.

LANDON BONE BAKER ARCHITECTS
734 N. Milwaukee Avenue Chicago, IL 60642 312-989-9100 www.landonbonebaker.com

vireo
Parti Banks Associates + Community ReDesigned

bgr
Consulting Engineers

TB
Taliaferro & Browne, Inc.
 Civil / Structural Engineering,
 Landscape Architecture & Surveying
 1020 E. 8th STREET
 KANSAS CITY, MISSOURI 64106
 PH (816) 283-3456 FAX (816) 283-0810
PROFESSIONAL ENGINEERING CORPORATION
 MISSOURI LICENSE NO. 00065 KANSAS LICENSE NO. E-1481
 PROFESSIONAL LAND SURVEYING CORPORATION
 MISSOURI LICENSE NO. 00004 KANSAS LICENSE NO. LS-196

**CLEVELAND HEIGHTS
 MPD DISTRICT
 KANSAS CITY, MISSOURI**

EXTERIOR ELEVATIONS

DWG NO.:
A200

2012 Taliaferro & Browne, Inc.