



# KANSAS CITY MISSOURI



# Detention Center Campus Update and Recommendations

5/10/2023

Transportation, Infrastructure and Operations Committee



# Recent Detention Facility History

- 1971 – Municipal Correction Institution (MCI) opens
  - Total Overall capacity of 348 pretrial and sentenced detainees.
- 2004 – Carter Cable Study reduced the MCI capacity to 228 detainees
  - Total Overall capacity reduced to 328 pretrial and sentenced detainees.
  - KCMO begins the supplemental use of 100 pretrial arrestees and sentenced detainees on the 8<sup>th</sup> floor of KCPD Headquarters
- 2009 – Kansas City closes MCI and contracts with Jackson County
  - Total Overall capacity reduced to 260 pretrial and sentenced detainees.
  - Jackson County capacity of 160 pretrial arrestees and sentenced detainees at Regional Correction Center (RCC)
  - KCMO continues the supplemental use of 100 bed capacity arrestees on the 8th floor of KCPD Headquarters

# Recent Detention Facility History

- 2015 – The Supplemental 8th Floor KCPD Headquarters location was closed
  - Total Overall capacity increased to 275 pretrial and sentenced detainees.
  - Jackson County Regional Correction Center (RCC) contract expanded to include the KCPD arrestees with 100 pretrial arrestees and 175 sentenced detainees
- 2018 – Partnership with Jackson County ends and Third-Party Detention contracting begins
  - Total Overall capacity reduced to 105 pretrial and sentenced detainees.
  - Temporary Housing agreement with a local third-party unsuccessful with multiple escapees and one death
  - KCMO begins contracting with Vernon County and Johnson County

# Current Detention Status

- **Vernon County – 70 beds**
  - **FY21** cost for beds, transport and medications: \$1,681,912.00
  - To date (March 2023): \$1,540,646.00
  - Payment only for the beds used
- **Johnson County – 35 beds**
  - **FY21** cost for beds and medications: \$1,076,230.00
  - To date (March 2023): \$738,118.00
  - Transport by KCMO Officers and Staff
  - Payment required even if beds are not used

# Additional Costs and Impacts – Current

- Transportation Expenses
- Management Expenses
- Officer Equipment and Safety Costs
- Training
- Hiring/Turnover

- 2019 Study for Site Evaluation and Stand-Alone Detention Center
  - SFS Architecture lead this effort
- 2022 Study Update to a Modern Campus Approach
  - 310 Bed Detention Facility with an additional 76 Beds for Health/Mental Health
    - Kitchen and Laundry Service Options
  - Community Rehabilitation and Resource Center
    - Rehabilitation and Diversionary Programs
    - Re-start Services – Government Issued ID, Court Ordered Requirements, Etc.
    - Initial Re-entry and Court Ordered Program Contacts

# Detention Center Campus Improvement Opportunities

- Provide one stop location for Rehabilitation and Diversionary Programs, Re-start Services and Re-entry Program Contacts
- Alleviate the burden of families that want to visit and support their loved ones incarcerated
  - Each additional visit reduces the recidivism by 3.8%
  - Minimal opportunity for visits with the current locations
- Provide re-entry services within the City to assist in reducing recidivism
- Provide a safer and more accessible work environment for City employees
- Retaining Kansas City Tax Dollars in Kansas City



- 2022 Design Team - Request for Proposal
  - Selection Team included Mayor Lucas
  - Selected TreanorHL Team for Campus Design



# Anticipated Schedule – Pending 2023 Council Approval and Funding

- Summer/Winter 2023
  - Site Evaluation
  - Complete Conceptual & Operational Models
    - Schematic Jail Management System
  - Initial Staffing Models
  - Conceptual Plan Development/Land Acquisition Review
  - City Council & City Staff Input into the Campus Plan
  - Community Groups input into the Campus Plan

# Anticipated Schedule Pending Council Approval and Funding

- Winter 2023/Fall 2024 – Study Completion and Preliminary Design
  - Schematic Design and Design Development Plans
  - Staffing Model Updates/Land Acquisition Completion/Operational Plan Updates/Construction Manager at Risk Selection
  - Public Engagement with the Key Stakeholders Input
    - Detainees and Family members
    - General Public
    - Victims
    - Council
    - KCPD & City Staff

# Anticipated Schedule Pending Council Approval and Funding

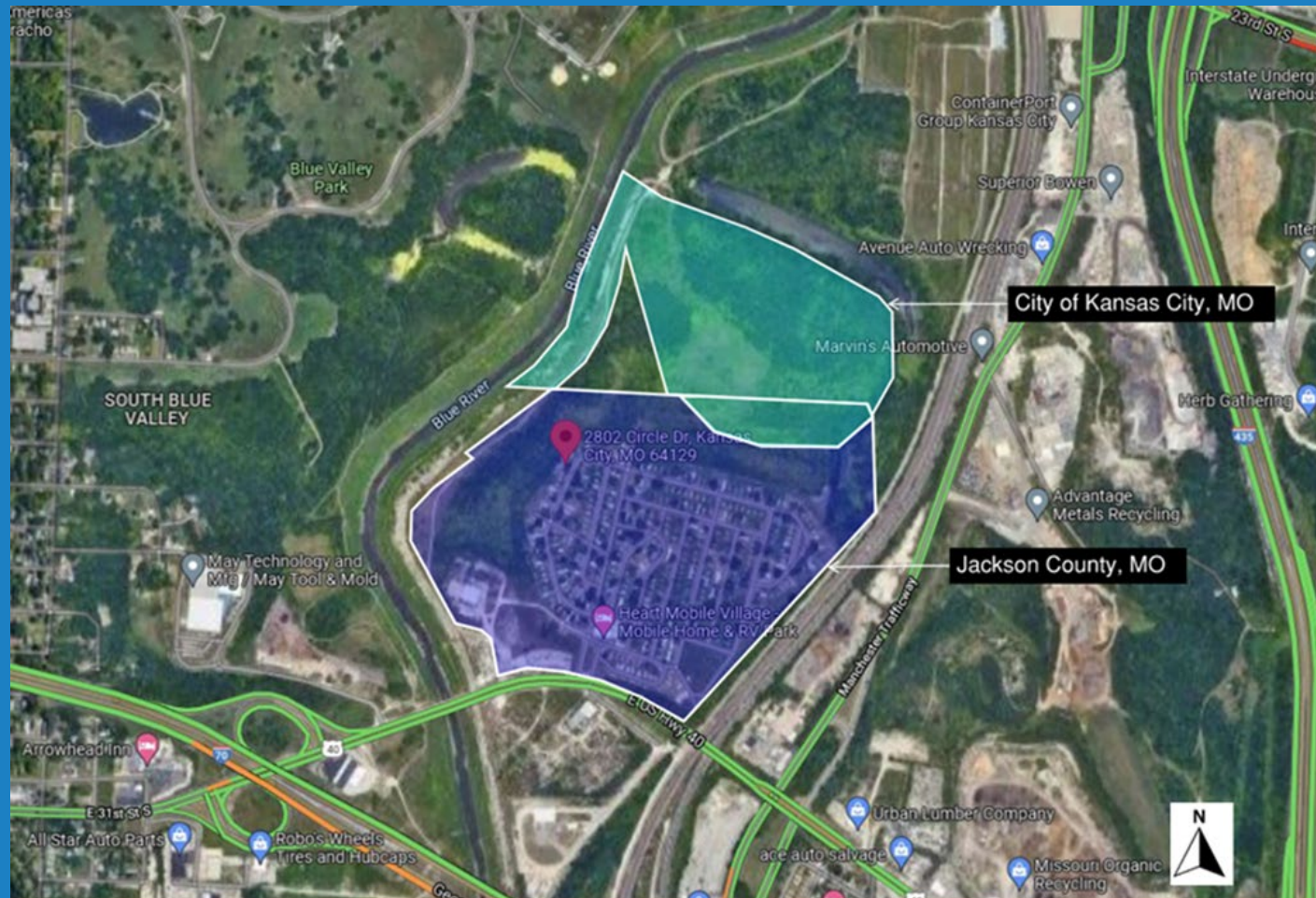
- Fall 2024/Spring 2025 – Final Design and Bid Plan Development/Construction Contract Development/Final Construction Cost Negotiations
- Summer 2025 – Early Start Date Construction Phase Services
- Fall 2026 – Early Construction Completion Date

# Jackson County Coordination Update

- Jackson County Options and Recommendations
  - Option 1 - Enlarged Facility | Constructing a Joint Facility
  - Option 2 – Multiple Structures | Independent Facilities on One Site
  - Option 3 – Shared Services | Independent Facilities Sharing Services
- Jackson County eliminated option 1 due to potential delay costs and a concern on the management of short-term detainees.
- Staff is recommending option 3 because it gives the City the best value and the most flexibility for the property development as well as the shared services.



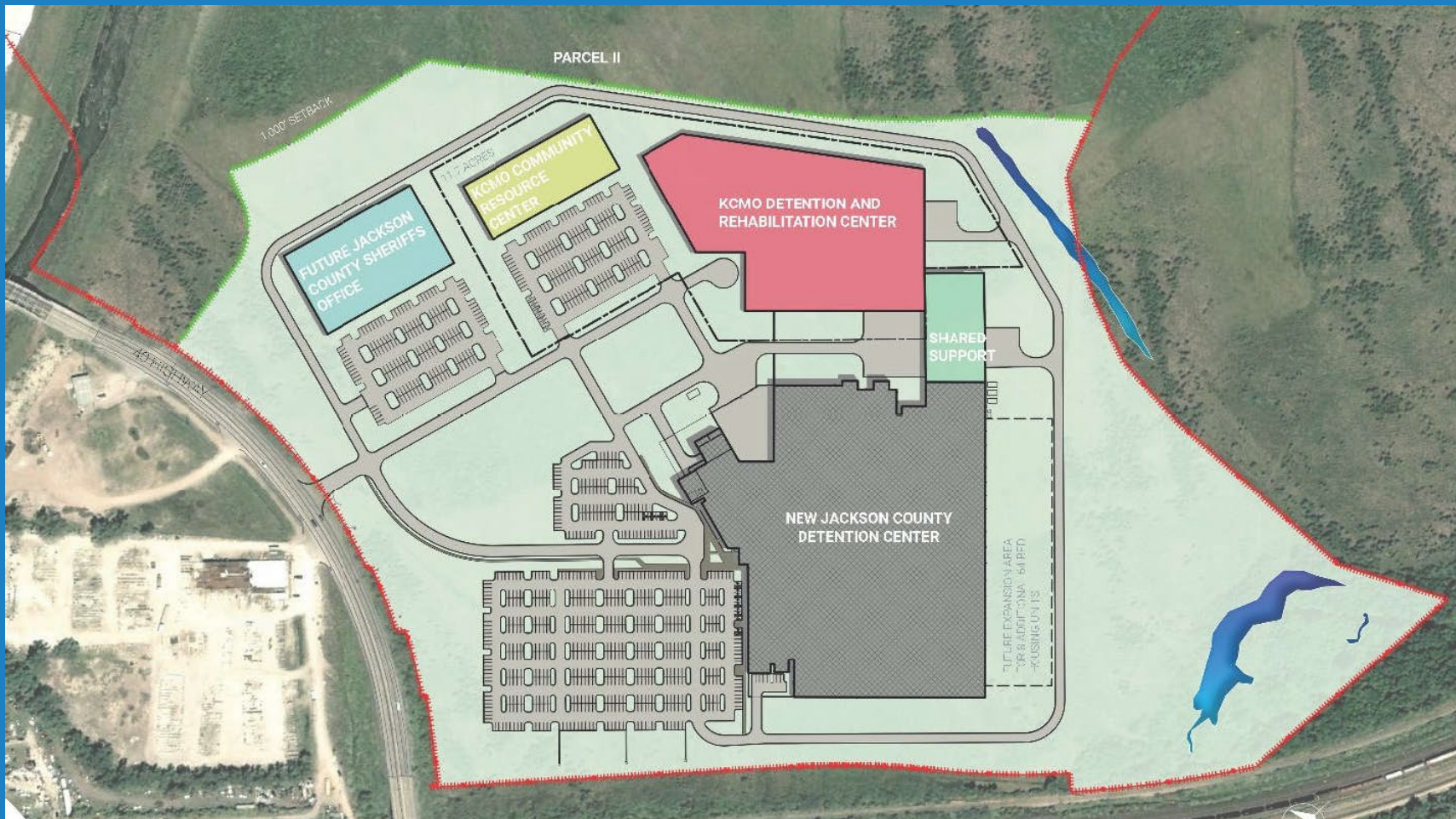
# Site Selection Recommendation







# Jackson County Coordination Update



# Council Actions and Project Input

- Staff will provide regular updates to City Council on the Project Status
- Staff will provide multiple “stop work” placeholders in the design to allow City Council the opportunity to provide input on the advancement of the design, land acquisition and construction opportunities
- Staff has identified an existing total of \$1.5 million in the current Public Safety Bonds
  - These funds would allow the start of the design efforts, provide site evaluation reviews and continued efforts toward the potential property purchase.
- Future Budget Requests for Design, Construction Contractor and Code Review/Inspection (\$12M total of the \$210M Estimated Budget)
- Potential Construction Funding from Public Safety Sales Tax and/or Municipal Bonds



# Additional Testimonial Information

- KCMO Court Reported Probation Completion Reduction
  - 73% Probation Completion in FY 17/18 with 275 bed capacity
  - 27% Probation Completion in FY 21/22 with 105 bed capacity
- Rose Brooks - From the coordinated community response efforts, including the survivor focus groups, over the years, I think the overall impression is that Kansas City is unique in the level of violence and danger that are involved in our municipal court cases. As you can see from the examples below, municipal defendants are often dangerous criminals with multiple violent offenses. Many of these offenders have punched, strangled, and/or used weapons against their partners. Even if a jail sentence is not lengthy, it can give time for a victim to make a safety plan, get an order of protection, find shelter, and generally get connected to the resources they need.



# QUESTIONS