

Ordinance 260246

Zoning Code Text Amendment

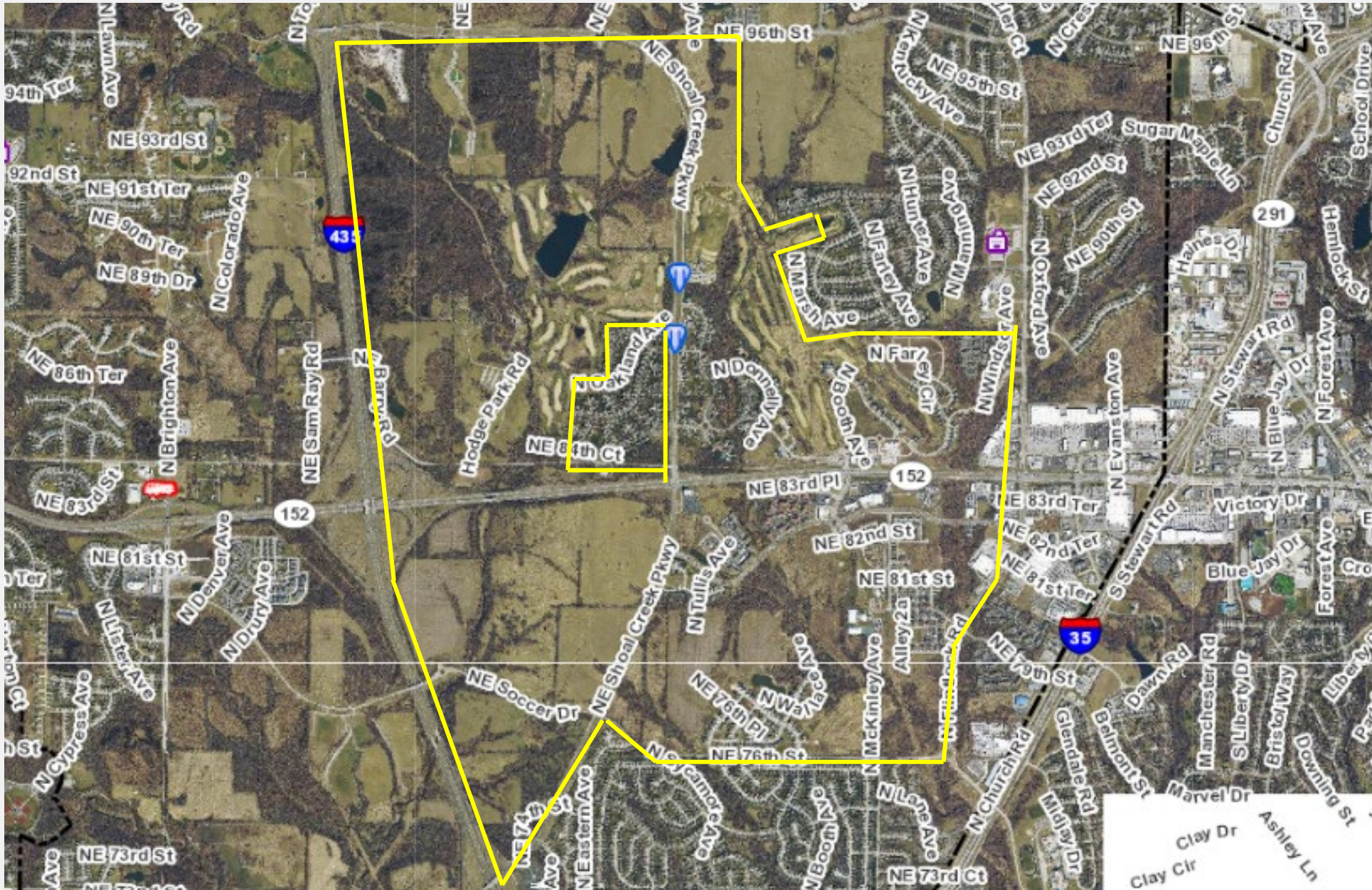
Shoal Creek Special Purpose District Text Amendment (88-255)

March 3, 2026

Prepared for

Neighborhood Planning and Development Committee







SHOAL CREEK COMMUNITY PLAN

K A N S A S C I T Y , M I S S O U R I

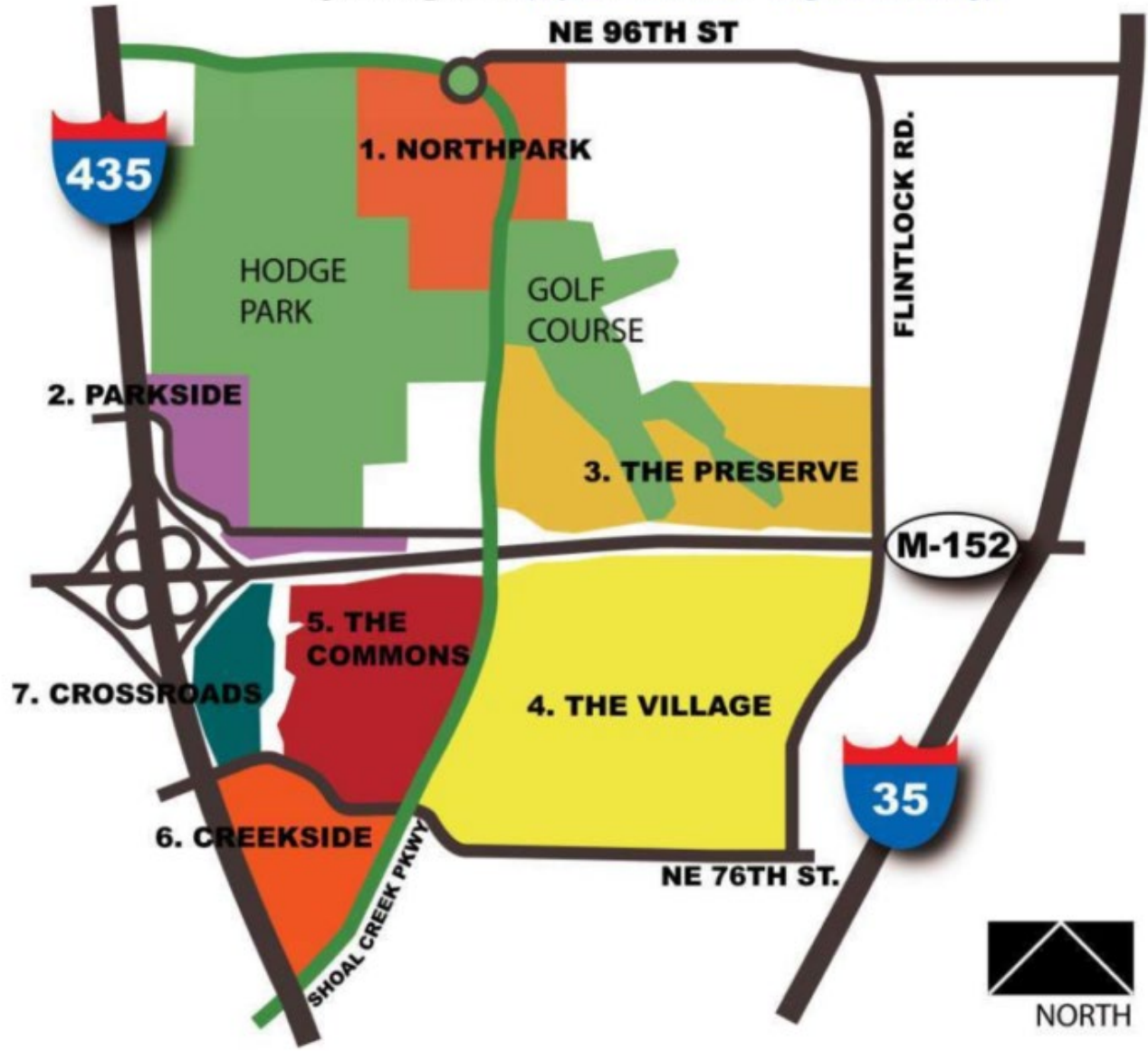


Updated - August 2025

Updated - August 2015

Updated - February 2010

Original - 2000



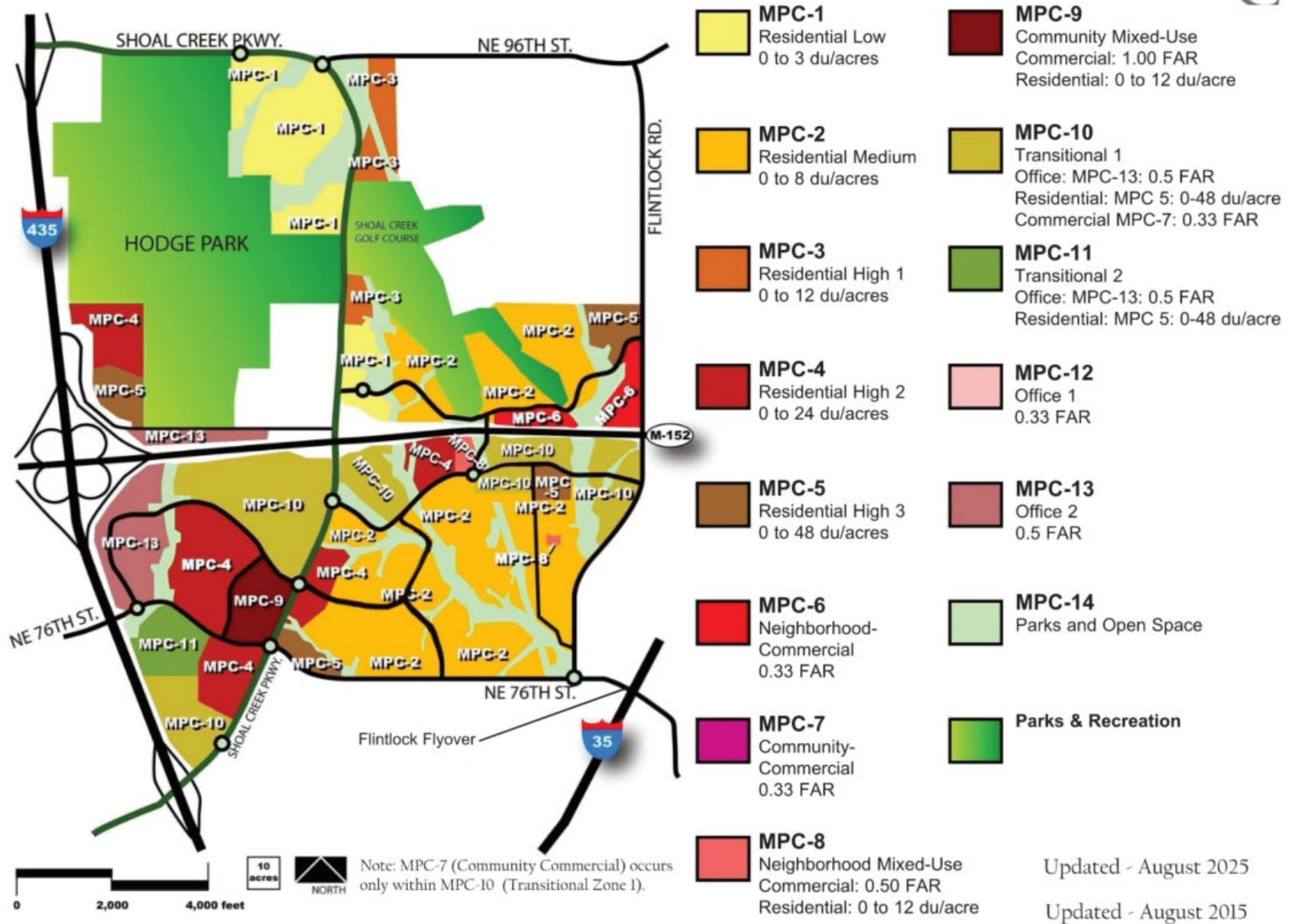
The Neighborhoods of Shoal Creek Valley

1	Northpark	248 Acres
2	Parkside	94 Acres
3	The Preserve	277 Acres
4	The Village	672 Acres
5	The Commons	242 Acres
6	Creekside	123 Acres
7	Crossroads	86 Acres
		<hr/>
		1,742 Acres

Exhibit E : Neighborhood Map



Exhibit H: Proposed Land Use Plan



Proposed Changes – Remove and Refer to Community Master Plan

- Removal of specific application submittal requirements and refer to Community Master Plan, which refers to Director's Minimum Submittal Requirements
- Removal of list of permitted uses
- Removal of performance standards outside of the jurisdiction of Ch. 88
- Removal of public improvement requirements
- Removal of application requirements for final plans and final plats.

City Plan Commission & Staff Recommendation

Case No. CD-CPC-2025-00190

Approval