

Grant awarded to Aim4Peace, Violence Prevention
Program at the Health Department



KANSAS CITY MISSOURI

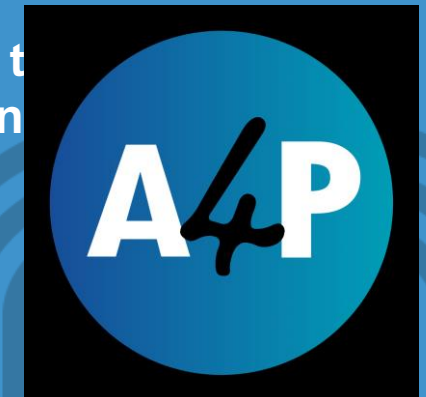
By the Bureau of Justice Assistance-US Dept. of Justice
Community Based Violence Intervention and Prevention Initiative
(CVIPI)

The Need & Opportunity

- **Kansas City, Missouri is ranked the 37th largest U.S. city yet ranks 8th deadliest per murder rates.**
- **The violent crime rate is 15.6/1000, 3x that of the state (5.42) and nearly 4x the national average (4.0).**
- **Kansas City saw 182 killings in 2020 and 169 in 2023, most from gun violence, and marked the second and third deadliest years on record.**
- **Aim4Peace (A4P) will address violent crime, targeting the population most impacted, and 30% of the budget, \$600,000 is dedicated to assembling a Hispanic response team to support the program's efforts to reduce homicides in the Hispanic community.**

January 24, 2023

Neighborhoods Planning and Development Committee



Homicide Breakdown

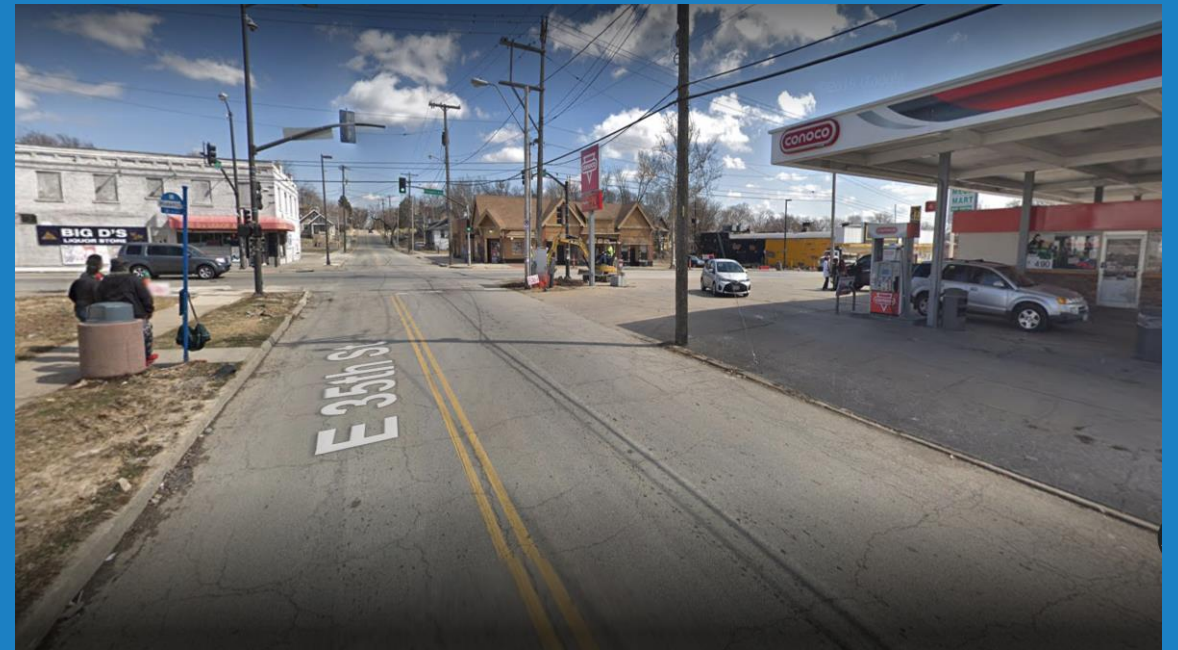
- In the last 5 years (2018-2022) there have been 794 homicides.
- Since 2013, homicides have risen dramatically: from 82 in 2014 to 151 in 2019; 182 in 2020; and 157 in 2021.
- Over the span of the five years 73% of the homicide victims were Black and 5% of the homicide victims were Hispanic.



Area of Focus

(East Patrol Division)

- 305 homicides occurred in EPD between January 1, 2018 and December 31, 2022.
- Roughly 38% of Kansas City's homicides occur in East Patrol Division.
- Yet East Patrol Division only accounts for approximately 17% of Kansas City's total population.
- EPD is a diverse community that consists of BIPOC and Hispanics.



Duration of Grant & Supports



- 3 years of funding from Bureau of Justice Assistance
- Grant will support three community outreach workers and one supervisor

Mattie Rhodes Center's Legacy

in Kansas City

Mission: MRC enriches the lives of individuals, families, and communities in a respectful, multicultural community.

Vision: MRC envisions a vibrant community in which individuals and families are healthy, safe, and have the resources to thrive.

MRC is a community development organization dedicated to individual and family well-being through social services, behavioral health counseling, and the arts.

The non-profit is celebrating 129 years of serving Kansas City.



Combating violence en nuestra comunidad

MRC's Latino Advocacy Task Force (LATF) provides advocacy and social-emotional support for Hispanic families who have lost relatives to homicide.

Mattie Rhodes Center's Community Resource Team (CRT) is a violence-prevention solution that seeks to break the cycle of violence and create positive, healthy, and engaged future leaders.



Combating violence en nuestra comunidad

The Community Resource Team:

- Implements the Cure Violence Model for this contract.
- Their programming encourages protective factors, implements interventions at the individual level, and promotes community-wide strategies that mediate the risk factors of violence.
- Targets youth in the Northeast community who are high risk because of the environment they live in and youth who are at-risk of entering the juvenile justice system.

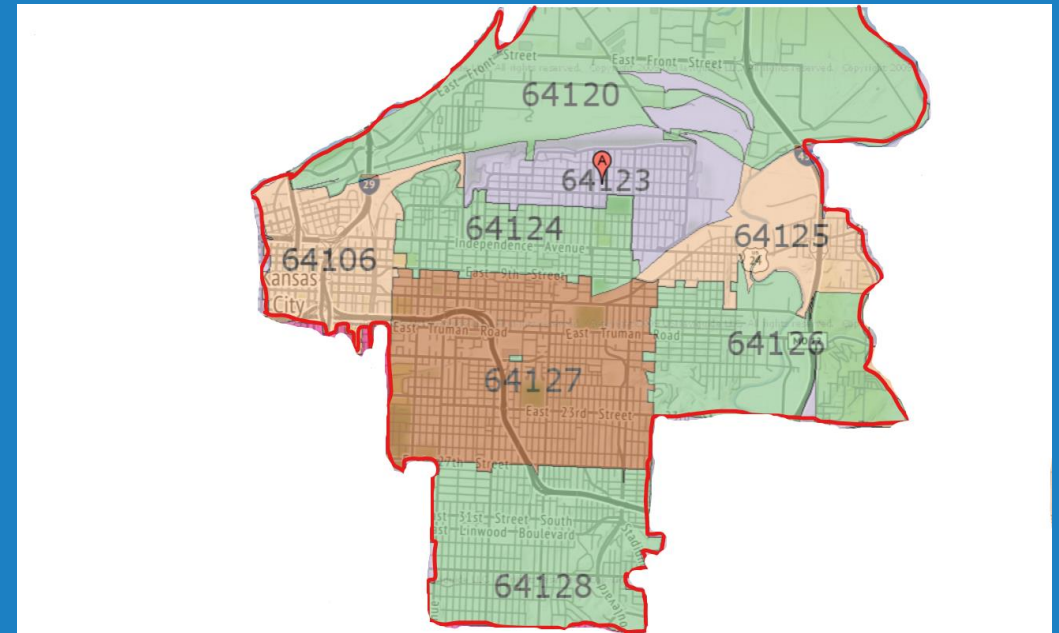


Service area: The Historic Northeast



The zip codes we serve include:

- 64106
- 64120
- 64123
- 64124
- 64125
- 64126
- 64127
- 64128



CRT Activities (PIO)



Prevention

- **Group education support groups at Guadalupe High School and Middle School**
- **Mentorship, goal setting or service plan, and accountability**
- **Referral follow-ups from MRC staff and other community organizations**
- **Short-term case management support**
- **Connecting individuals to immediate resources**

Intervention

- **Attending KCPS truancy court**
- **Advocating at local schools, court settings, and with preparation**
- **Empowering participants to access resources they need**
- **School or home visits with student or family**
- **Individual, group, and family therapy**
- **Homelessness prevention services**

Outreach and Engagement

- **MRC Monthly Resource Luncheon at KCPD East Patrol**
- **Attend Northeast Neighborhood Association Meetings**
- **Attend Citizens Police Academy, connecting KCPD to Northeast residents**
- **Attend KCPD Monthly Special Resource meeting.**
- **Member of Partners for Peace coalition**
- **Attend weekly shoot reviews**
- **Networking and attending community events**