

South Round Top Neighborhood Plan

CD-MISC-2026-00003

April 1, 2026

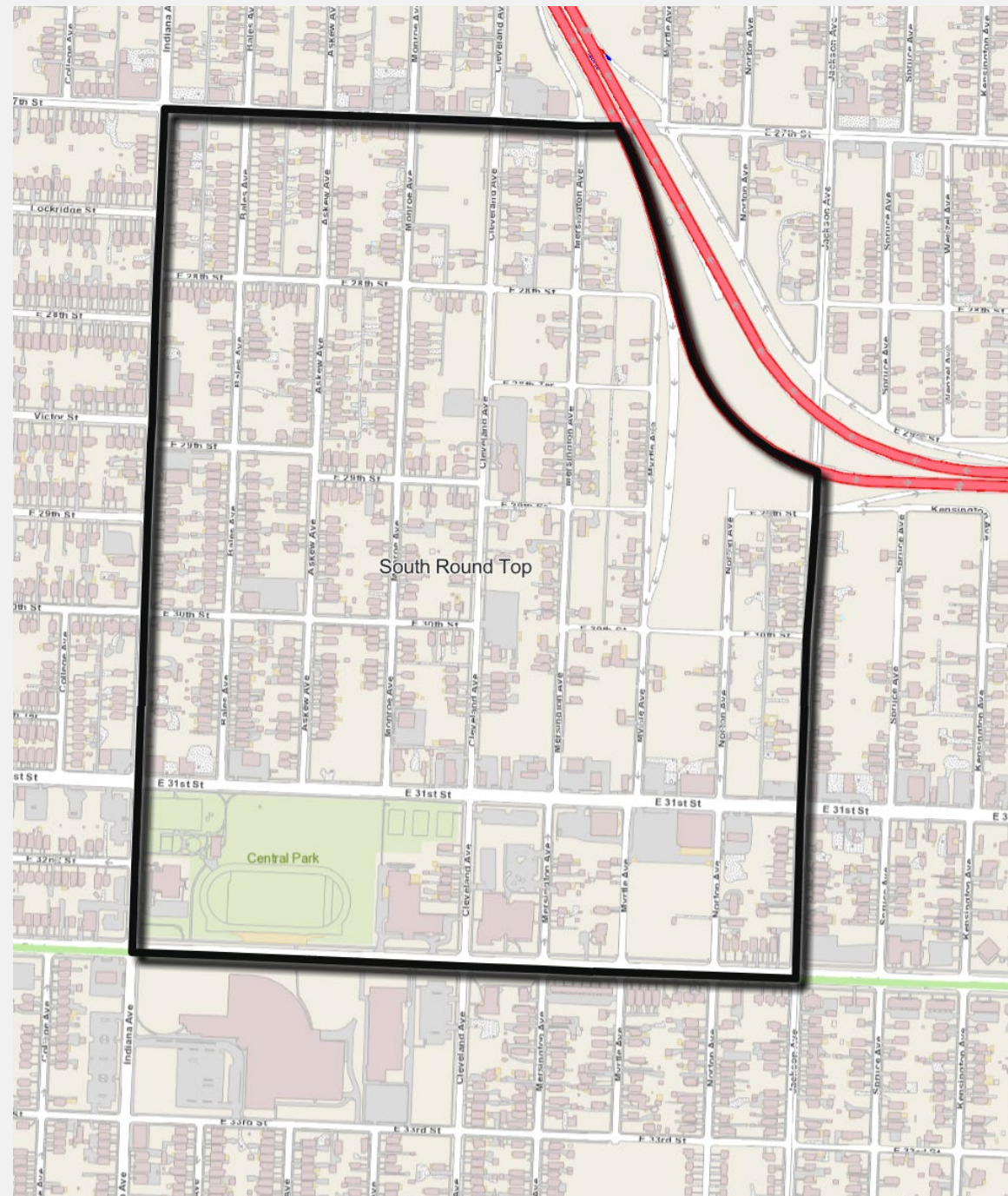
Prepared for:

City Plan Commission



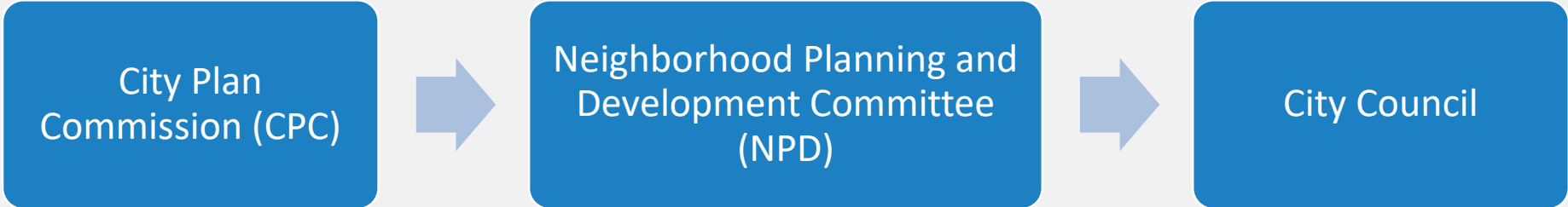
Boundaries

- North – E 27th St
- South - Linwood Blvd
- East – I-70/Jackson Ave
- West - Indiana Ave



Planning Process

1. Pre-planning
2. Neighborhood Engagement
3. Writing
4. Adoption



Pre-Planning

Primarily City staff work, including:

- Researching the neighborhood
- Interviewing neighborhood leadership
- Walking the neighborhood
- Aerial map analysis
- Identification of community assets
- Reviewing other plans associated with this neighborhood

Neighborhood Engagement

Public engagement meetings on:

- June 14, 2025
- July 12, 2025
- October 11, 2025
- December 13, 2025
- February 14, 2026

Residents discussed their primary concerns in their community and worked on a mapping activity to identify issues related to City services.

Mapping Activity

Maps, push pins, and sticky notes were used by South Round Top residents to identify various neighborhood issues related to City services.

Creates a “neighborhood issue inventory”



Writing the Plan

- Develop recommendations from resident-identified issues
- Vet recommendations with responsible departments
- Present draft plan for final resident feedback
- Provide residents with resource packet after planning process has concluded

Plan Content

- General overview of the neighborhood planning process
- Overview of related planning documents
- Summary of the South Round Top process
- Plan recommendations
- Special Focus Areas

Adopting the Plan

- Adopted as an addendum to area plan
- South Round Top falls within the Heart of the City Area Plan
- Approved by resolution as policy guidance
- Serves as multi-year “to-do” list for budgets and PIAC decisions

Recommendations

Recommendations come directly from the neighborhood issue inventory created with the input of residents.

Recommendations have an icon if they should be prioritized due to their proximity to a park, school, community gathering space, or if the issue is located on the High Injury Network.



On the High Injury Network (HIN)



Near a School, Community Center, or Senior Living



Near a Park

Recommendations

Alleyways

Amenities

Housing

Overgrown Vegetation

Pedestrian Safety

Resident/Neighborhood Leadership

Sidewalks

Streets

Traffic Calming

Transit

Trash Dumping

Underground Contamination

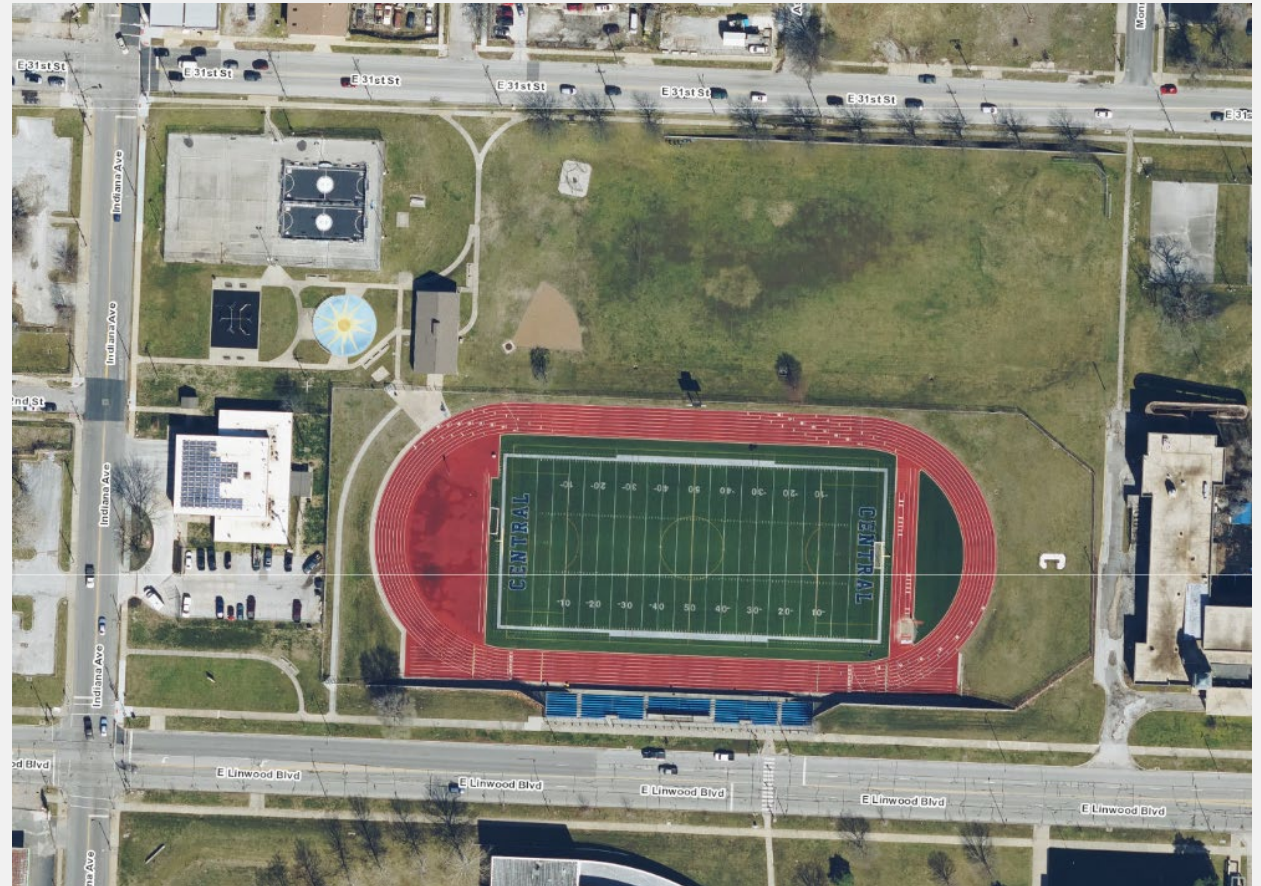
Improve I-70 Project

Central Park Improvements

Primary public park for the neighborhood.

Residents identified several improvements they would like to see.

Included also is what's called for in the Parks Master Plan.



Petroleum Tank Leak

Near the intersection of E 31st St and Mersington Ave is the former site of a leaking underground petroleum tank.

Over 20+ years, the contamination from that leak has negatively impacted residents and has contributed to a prevalence of abandoned homes and demolitions in the area.

Prolonged legal battle continues.



Improve I-70 Project

The Missouri DOT is making significant changes and improvements to I-70, including:

- Removing the off-ramp onto Myrtle Ave
- Realigning eastbound lanes to be closer to westbound lanes

This will create a lot of excess ROW that may be used to the benefit of the neighborhood after stormwater control measures are taken.





Questions?