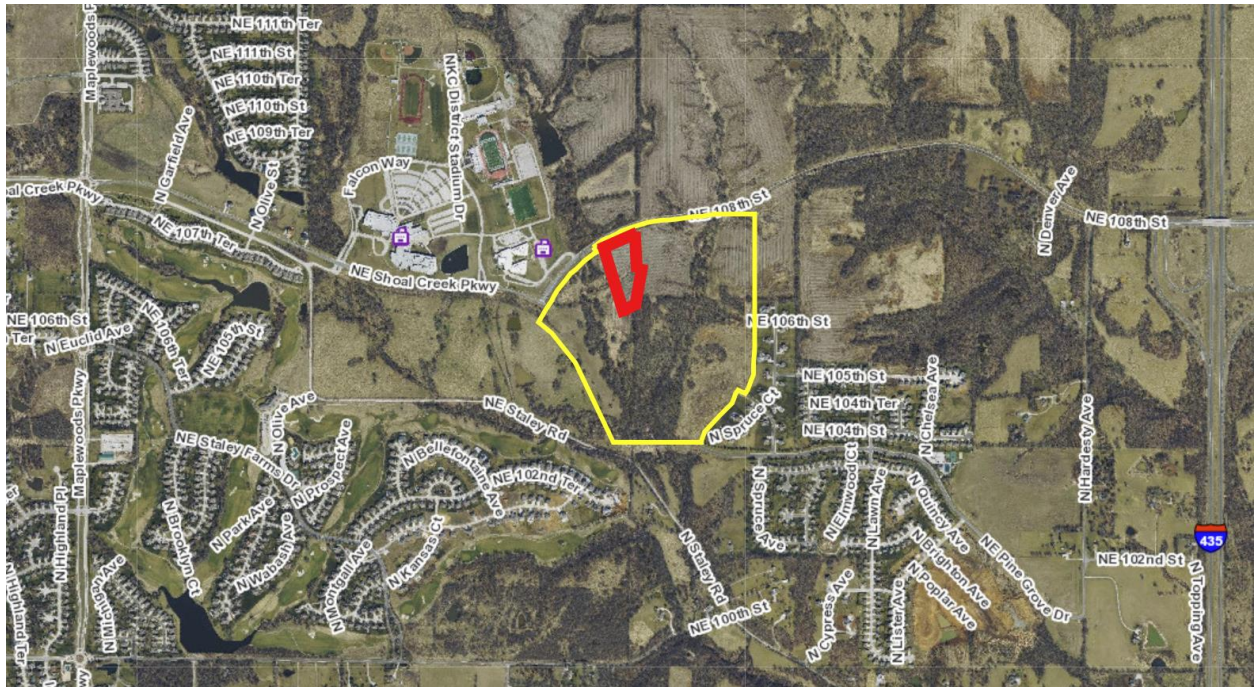




Section No. 88-20A-1500

Exhibit A



A TRACT OF LAND LOCATED IN THE SOUTHEAST QUARTER OF SECTION 30, TOWNSHIP 52 NORTH, RANGE 32 WEST, IN KANSAS CITY, CLAY COUNTY, MISSOURI, BEING MORE PARTICULARLY DESCRIBED AS FOLLOWS:

BEGINNING AT THE SOUTHEAST CORNER OF THE WEST HALF OF THE SOUTHEAST QUARTER OF SAID SECTION 30; THENCE N 01°36'23" E, A DISTANCE OF 807.30 FEET, TO THE POINT OF BEGINNING;

THENCE N19° 11' 25"W, A DISTANCE OF 1517.91 FEET, TO A POINT ON THE SOUTH RIGHT OF WAY LINE OF NE 108TH STREET, AS NOW EXISTS, AND A POINT OF CURVATURE,

THENCE ALONG A CURVE TO THE RIGHT WITH AN INITIAL TANGENT BEARING OF S 55°14'19" W, A RADIUS OF 1808.78 FEET, AN ARC LENGTH OF 652.77 FEET, A CHORD DIRECTION OF N65° 34' 33"E, AND A CHORD DISTANCE 649.23 FEET;

THENCE S 2° 57' 31"E, A DISTANCE OF 240.46 FEET;

THENCE S 7° 38' 14" E, A DISTANCE OF 324.02 FEET;

THENCE S 83° 21' 28" E, A DISTANCE OF 117.82 FEET;

THENCE S 15° 45' 55" E, A DISTANCE OF 54.51 FEET;

THENCE S 87° 56' 57" E, A DISTANCE OF 307.36 FEET;

THENCE S 21° 11' 35" W, A DISTANCE OF 1141.65 FEET;

THENCE N 89° 44' 16" W, A DISTANCE OF 173.94 FEET, TO THE POINT OF BEGINNING. CONTAINS 915,680 SQ. FT. OR 21.02 ACRES.